



**Odalís García López**

**Dra. Rosvani Margine Morales Irecta.**

**Tema: Actividades**

**Biomatemáticas**

**PASIÓN POR EDUCAR**

**Grado: 2**

**Grupo: A**

Comitán de Domínguez Chiapas a 02 de Junio de 2023

$$1.- f(x) = (7x^2 + 4x) + (6x^3 - 2x^2)$$

$$2.- f(x) = (2x^3 - 4x^2) + (2x^2 + x)$$

$$3.- f(x) = (9x^2 + 3x) + (x^3 + x^2)$$

$$4.- f(x) = \frac{8x^6 - 6x^3 - 4}{2x^4}$$

$$5.- f(x) = \frac{2x^3 - x^2}{6x^2 + x + 2}$$

$$6.- f(x) = \frac{5x^2 + 4x}{6x^3}$$

$$7.- f(x) = \frac{3x^5 - 7x^4}{2x}$$

$$8.- f(x) = \frac{10x^2 - 5x}{15x - 2}$$

$$9.- f(x) = \frac{2x^{10}}{2x^5}$$

$$10.- \frac{56x}{6x}$$

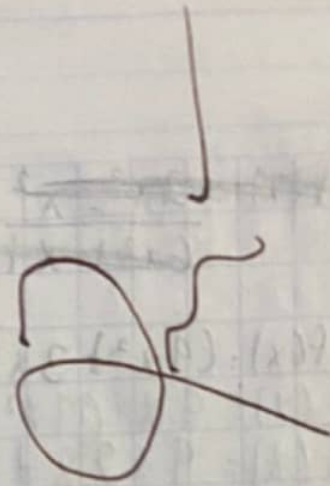
$$1.- f(x) = (7x^2 + 4x) + (6x^3 - 2x^2)$$

$$f(x) = 18x^2 + 10x + 4$$

$$2.- f(x) = (2x^3 - 4x^2) + (2x^2 + x)$$

$$f(x) = 6x^3 - 4x^2 + 2x^2 + x$$

$$f(x) = 6x^3 - 2x^2 + x$$



## Ejemplos

Valores calculados

pH	7.156	6.916
PCO2	48.6	6.6
Hco	1.4	

$$x^2 - |x| = (x) \cdot 8$$

$$x - x^2$$

\* Exceso de base está negativo  
Significa que está deprimida.

$$EB = 15.2 - (10(7.156) - 24)$$

$$EB = 15.2 - (10(-0.244) - 24)$$

$$EB = 15.2 + (9.756) - 24$$

$$EB =$$

$$1. - 1.4 - (10(6.916 - 7.4) - 24)$$

$$EB = 1.4 - (45.84 - 24)$$

$$EB = -27.44$$

$$2. - \text{pH} = 7.051 \quad EB = 1.75 - (10(7.051 - 7.4) - 24)$$

$$\text{PCO}_2 = 6 \quad EB = 1.71 - (3.49 - 24) - 24$$

$$\text{HCO}_3 = 1.7 \quad EB = -25.3790 - 24$$

$$EB =$$

$$3. - \text{pH} = 7.293 \quad EB = 8.9 + (10(7.293 - 7.4) - 24)$$

$$\text{PCO}_2 = 18 \quad EB = 8.9 + (1.07 - 24) - 24$$

$$\text{HCO}_3 = 8.9 \quad EB = 8.9 + 16.17 - 25$$