

1 Places

A Complete these sentences with the correct places.
Write one letter on each line.

- We need gasoline for the car. Is there a g a s s t a t i o n near here?
- I'm going to go to the b a n k. I need some traveler's checks.
- I work at a b e o k s t o r e. I love books, so it's a great job.
- Are you going to the p o s t o f f i c e? I need some stamps.
- We don't have anything for dinner. Let's buy some food at the s u p e r m a r k e t.
- Tomorrow we're going to go to Paris for five days. We're going to stay at an expensive H o t e l.
- I have a stomachache. Can you buy some antacid at the D r u g s t o r e?
- Let's go out for lunch. There's a great Mexican R e s t a u r a n t downtown.

B Find and circle the places in part A in the puzzle.

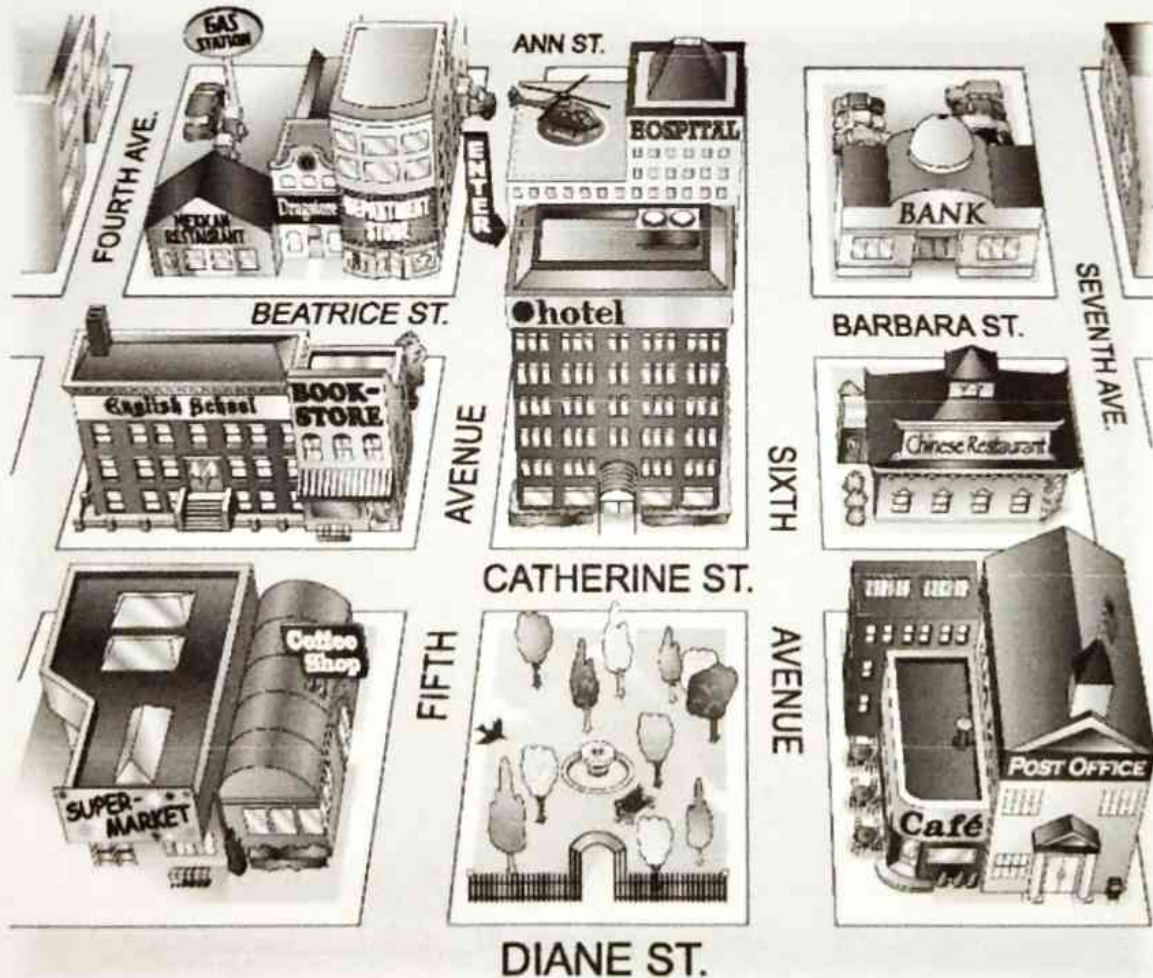


2

Look at the map. Complete the sentences with the prepositions in the box.

<input checked="" type="checkbox"/> across from	<input checked="" type="checkbox"/> between	<input checked="" type="checkbox"/> on
<input checked="" type="checkbox"/> behind	<input checked="" type="checkbox"/> next to	<input type="checkbox"/> on the corner of

1. The English school is on Catherine Street.
2. The hospital is behind the hotel.
3. The Mexican restaurant is on the corner of Beatrice Street and Fourth Avenue.
4. The bank is on Barbara Street, between Sixth and Seventh Avenues.
5. The bookstore is next to the English school.
6. The coffee shop is across from the park.

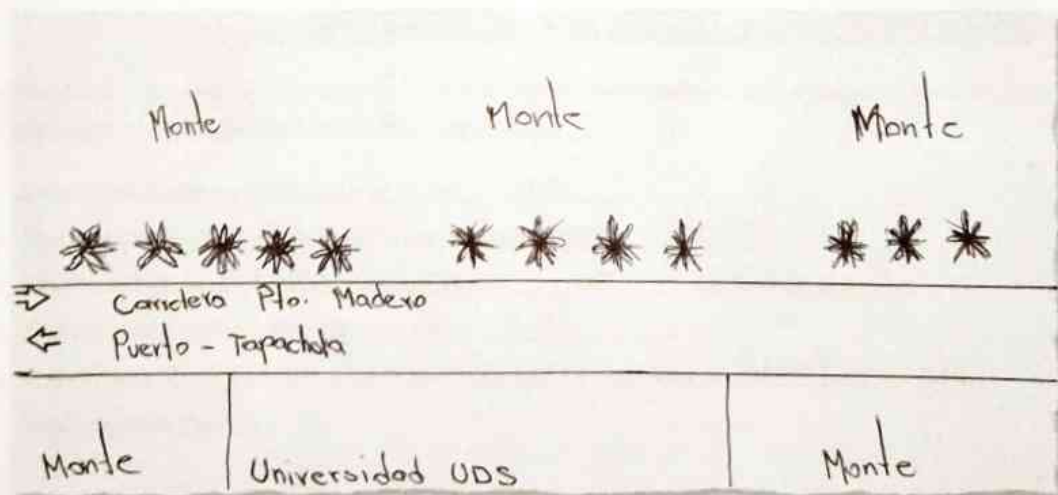


3 Where is it?

A Look at the map in Exercise 2 again. Where is each place? Write two sentences.

1. bookstore The bookstore is on the corner of Catherine Street and Fifth Avenue. It's next to the English school.
2. supermarket The supermarket is on the corner of Dione S. and Fourth A. It's next to the coffee shop.
3. department store The department store is on the corner of Fifth A. and Dione S. It's next to the D.
4. gas station The gas station is on the corner of _____ and _____ street and fourth A. It's behind the Mexican Restaurant.
5. Chinese restaurant The Chinese restaurant is on Catherine St between Sixth and Seventh A.
6. hotel The hotel is across from the park. It's between Fifth and Sixth Ave.
7. post office The post office is on Dione. It's next to _____.
8. drugstore The drugstore is across from department store and Mexican Restaurant. It's on Beatrice street.

B Where is your school? Draw a map. Then write two sentences.



The school "UDS" is on the road of the
post. It's next to the nursing home

4 Complete the conversation. Use the sentences and questions in the box.

- | | |
|--|---|
| <input type="checkbox"/> Next to the café? | <input checked="" type="checkbox"/> Excuse me. Can you help me? |
| <input type="checkbox"/> Is there a post office around here? | <input type="checkbox"/> Where on Diane Street? |
| <input type="checkbox"/> Thanks a lot. | |

Rachel: Excuse me. Can you help me?

Man: Sure.

Rachel: Is there a post office around here?

Man: Yes, there is. It's on Diane Street.

Rachel: Where on Diane street?

Man: It's on the corner of Diane Street and Seventh Avenue.

Rachel: Next to the café?

Man: Yes, that's right. It's right next to the café.

Rachel: Thank a lot

Man: You're welcome.



5 Complete the sentences with the opposites.

- Don't turn *right* on Fifth Avenue. Turn left.
- The Waverly Hotel isn't *in front of* the concert hall. It's Behind it.
- Don't walk *down* Columbus Avenue. Walk up Columbus Avenue.
- The museum isn't on the *left*. It's on the right.
- The Empire State Building is *far* from here, but Central Park is brand of here.
You can walk there.

6

Look at the map. Give these people directions. Use the phrases and sentences in the box.

Walk up/Go up . . . Street/Avenue.

Turn left on . . . Street/Avenue.

Walk to . . . Street/Avenue

Walk down/Go down . . . Street/Avenue.

Turn right on . . . Street/Avenue.

It's on the left/right.



1. Sophia is looking for the Mexican restaurant.

Go up Fifth Avenue. Turn left on Beatrice Street.

Walk to Fourth Avenue. It's on the right.

2. Kate is looking for the post office.

Go down seventh A. Turn left on Diane's

Walk to seventh A. It's on the left

3. Bob is looking for the supermarket.

Go down Seventh A. Turn left on Diane's

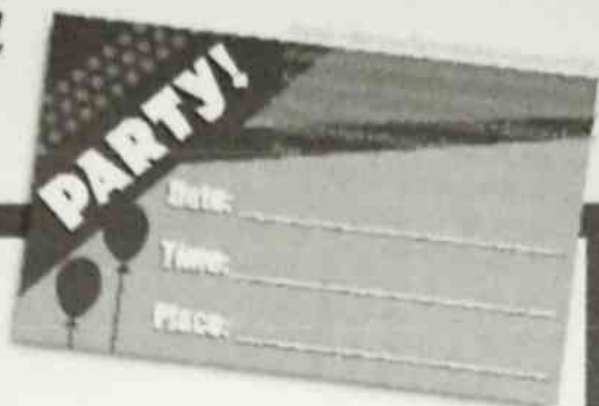
Walk to Fourth A. It's on the left

4. Jim is looking for the bank.

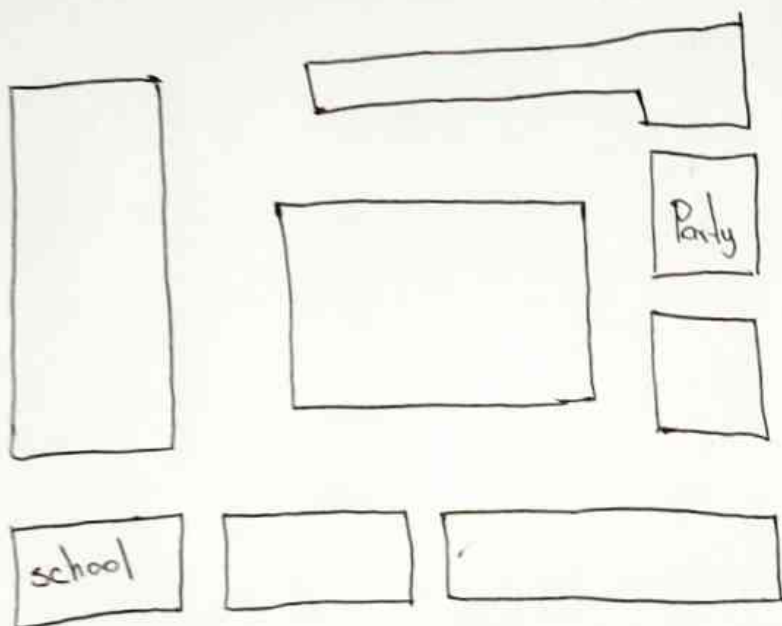
Go down Fifth A. Turn right on Barbara

Walk to sixth A. It's on the right

7 Imagine you're going to have a party. Complete the invitation. Then draw a map and write directions to the party from your school.



Map to the party



Directions to the party

Start at the school. Then
 Go down Fifth A. Turn right on Atchinson
 Street
 Walk to sixth Avenue its on the right