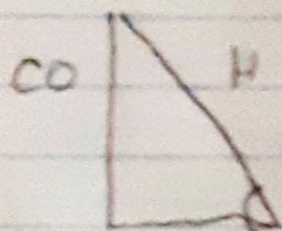


1. Observa las siguientes imágenes y selecciona la razón trigonométrica que corresponde

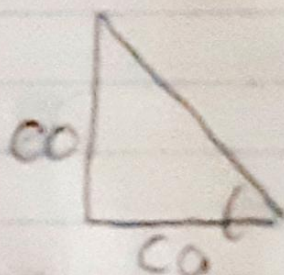
Sen

Cos

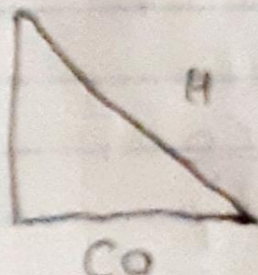
Tan



Sen

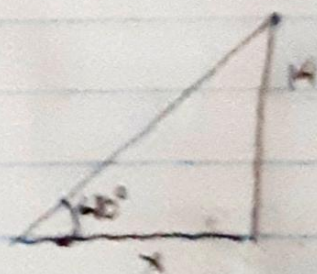
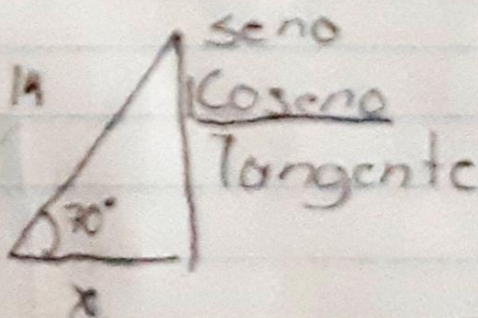
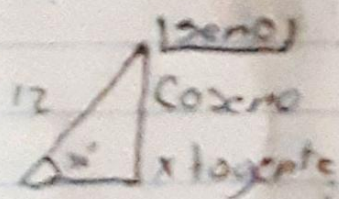


Tan

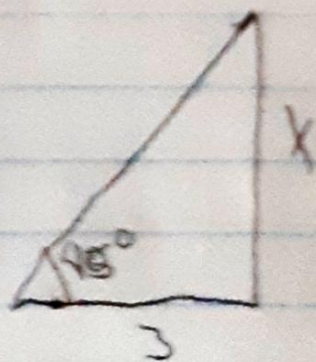


Cos

2. Selecciona la función trigonométrica asociada a los datos del triángulo

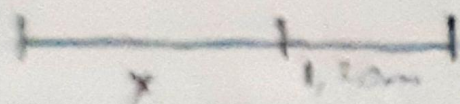
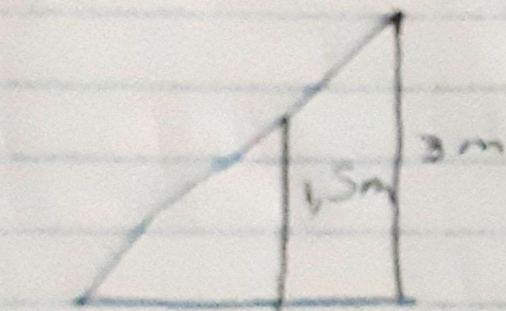


Sen
Coseno
Tangente



Sen
Coseno
Tangente

Resuelve los siguientes ejercicios sobre el teorema de Tales



0.6

$$\begin{array}{ccc} 1,5 & \rightarrow & 3 \\ x & \rightarrow & 1,20 \end{array}$$

$$1,8 = 3x$$

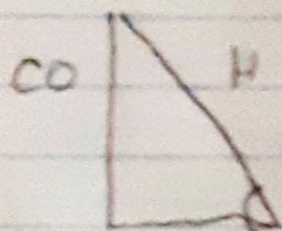
$$\frac{1,8}{3} = x = 0.6$$

1. Observa las siguientes imágenes y selecciona la razón trigonométrica que corresponde

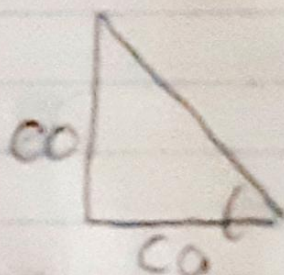
Sen

Cos

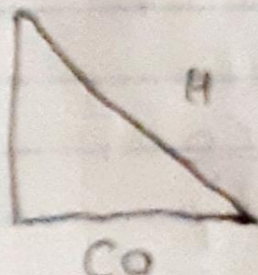
Tan



Sen

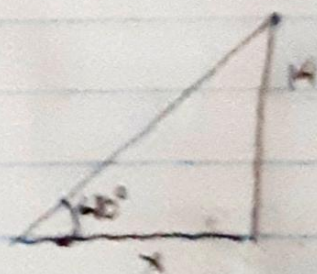
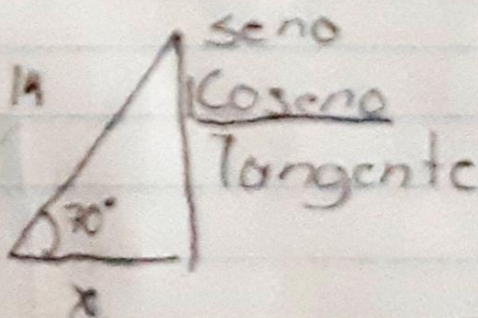
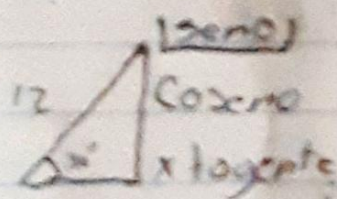


Tan

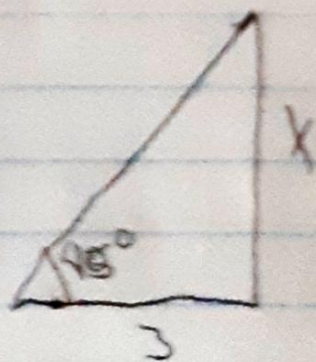


Cos

2. Selecciona la función trigonométrica asociada a los datos del triángulo



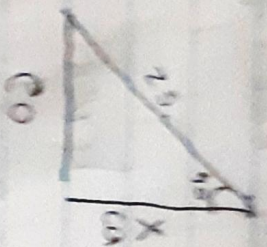
Seno
Coseno
Tangente



Seno
Coseno
Tangente

Jonathan Melgar

Calcula el valor faltante



$$\cos = \frac{Co}{hip}$$

hip

$$\cos 45^\circ = \frac{X}{25}$$

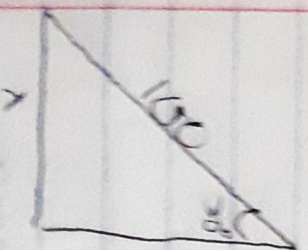
25

$$0.7071 = \frac{X}{25}$$

25

$$25(0.7071) = Co = 17.6775$$

$$X = \frac{40}{1.7321} = 23.09$$



$$\text{Sen} = \frac{Co}{hip}$$

hip

$$\text{Sen } 30^\circ = \frac{X}{100}$$

100

$$0.50000 = \frac{X}{100}$$

$$\text{Sen} = \frac{Co}{hip}$$

hip

$$\text{Sen } 45^\circ = \frac{X}{30}$$

30

$$0.7071 = \frac{X}{30}$$