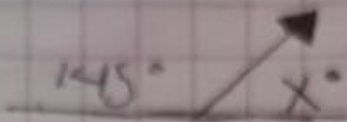


Resuelve los siguientes Problemas

1)  $x = ?$

- a)  $145^\circ$     b)  $90^\circ$     c)  $72.5^\circ$     d)  $45^\circ$

e)  $35^\circ$

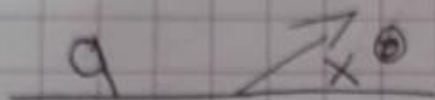


$$\begin{array}{r} 145^\circ \\ + 35 \\ \hline 180 \end{array}$$

2)  $x = ?$

- a)  $a$   
b)  $90^\circ$

- c)  $90 - a$   
d)  $180 - a$   
e)  $180 \times a$

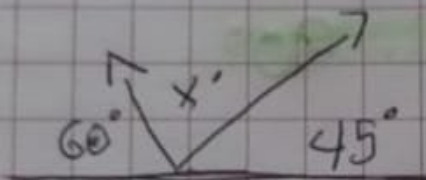


3)  $x = ?$

$a = 30^\circ$   
 $b = 45^\circ$

c)  $75^\circ$

- d)  $90^\circ$   
e)  $105$



4)  $x = ?$

a)  $180 - a - b$

b)  $2a$

c)  $180 - 2a$

d)  $180 - a$

e)  $180 + 2a$



5)  $x = ?$

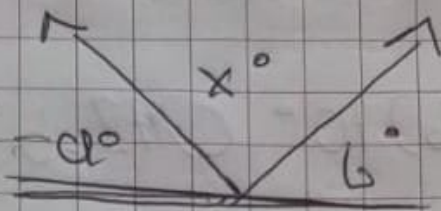
a)  $90^\circ$

b)  $180^\circ = a - b$

c)  $a + b = 180$

d)  $a - b$

e)  $a + b$



6)  $x = ?$

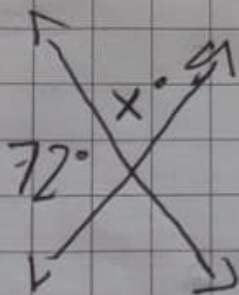
a)  $18^\circ$

b)  $72^\circ$

c)  $90^\circ$

d)  $108^\circ$

e)  $128^\circ$



$108^\circ$

7)  $x = ?$

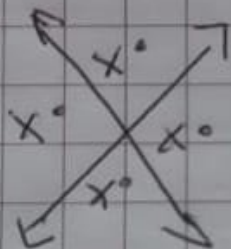
a)  $45^\circ$

b)  $60^\circ$

c)  $90^\circ$

d)  $180^\circ$

e)  $360^\circ$



$90^\circ$

8)  $x = ?$

a)  $30^\circ$

b)  $40^\circ$

c)  $50^\circ$

d)  $60^\circ$

e)  $100^\circ$

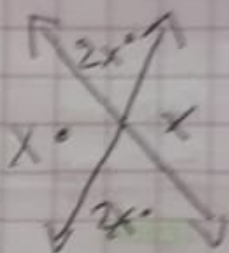






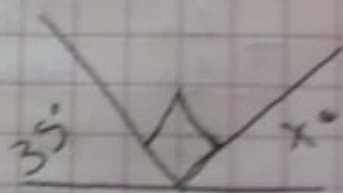
9)  $x = ?$

- a)  $30^\circ$
- b)  $60^\circ$
- c)  $90^\circ$
- d)  $120^\circ$
- e)  $150^\circ$



10)  $x = ?$

- a)  $35^\circ$
- b)  $45^\circ$
- c)  $55^\circ$
- d)  $65^\circ$
- e)  $70^\circ$





En los primeros cuadros arroja la suma directa en el siguiente con el resultado ya simplificado

5h	45 min	65s
4h	38 min	42s
9	83	98
10	23	33

2h	49 min	53s
3h	56 min	26s
5	105	79
6	45	31

4h	42 min	27s
3h	13 min	37s
7	55	64
7	56	06

2h	47 min	22s
1h	40 min	18s
3	87	40
4	45	40

6h	24 min	54s
1h	42 min	36s
2h	15 min	44s
15	81	134
16	37	23

3h	14 min	54s
4h	22 min	39s
6h	15 min	28s
13	51	127
13	52	01



Transforma los siguientes ángulos de grados a radianes

$$a) 0^\circ = 0$$

$$a) 12^\circ = \frac{\pi}{15} = 0.209$$

$$b) 30^\circ = \frac{\pi}{6} = 0.52$$

$$b) 78^\circ = \frac{13\pi}{20} = 0.433$$

$$c) 45^\circ = \frac{\pi}{4} = 0.785$$

$$c) 36^\circ = \frac{\pi}{5} = 0.628$$

$$d) 60^\circ = \frac{\pi}{3} = 1.047$$

$$d) 66^\circ = \frac{11\pi}{30} = 1.107$$

$$e) 90^\circ = \frac{\pi}{2} = 1.571$$

$$e) 50^\circ = \frac{5\pi}{9} = 0.549$$

$$f) 210^\circ = \frac{7\pi}{3} = 1.166$$

$$f) 115^\circ = \frac{23\pi}{36} = 0.365$$

$$g) 120^\circ = \frac{2\pi}{3} = 0.666$$

$$h) 135^\circ = \frac{3\pi}{4} = 0.75$$

$$i) 150^\circ = \frac{\pi}{2} = 2.618$$

$$j) 20^\circ = \frac{\pi}{9} = 0.349$$