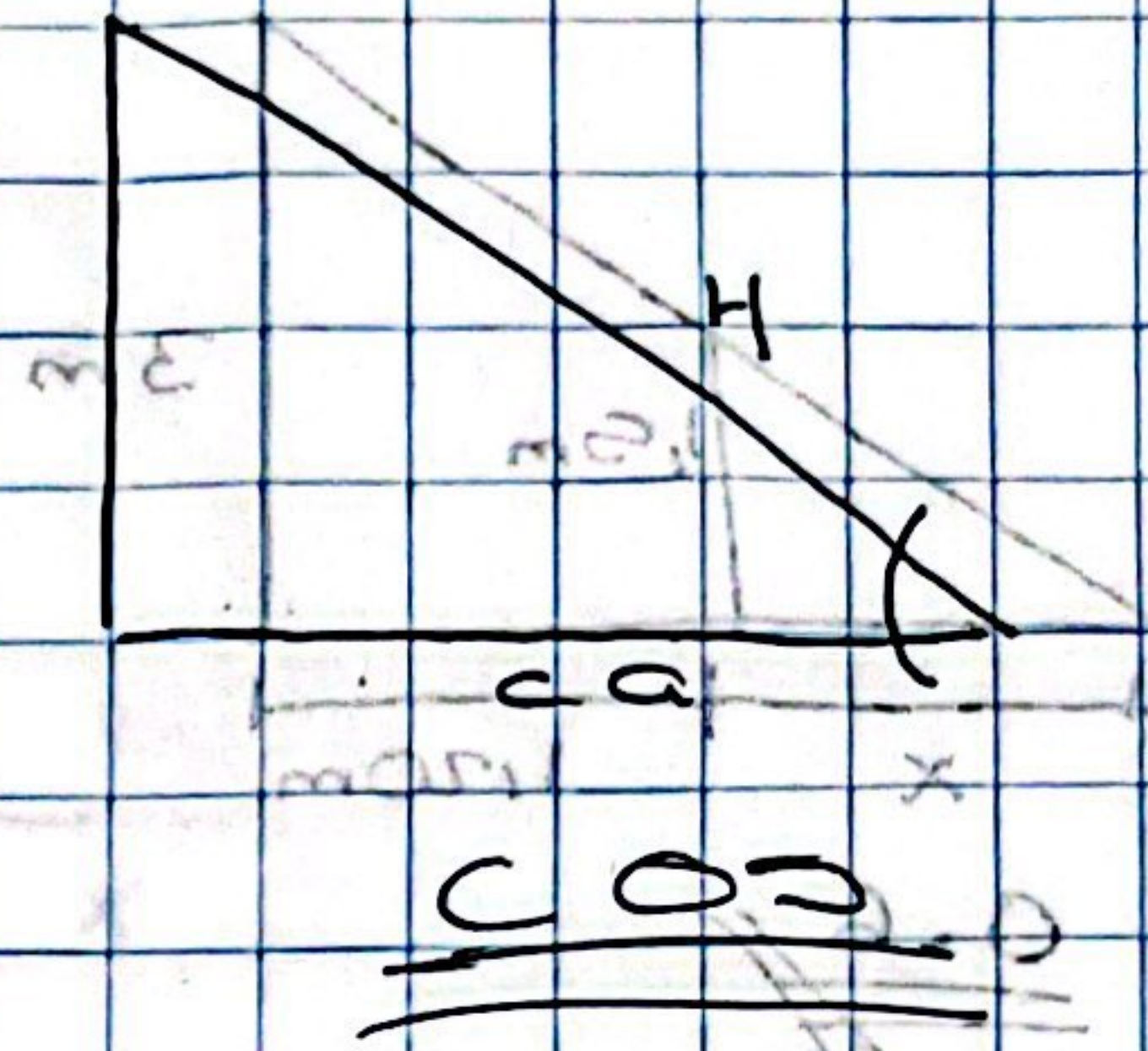
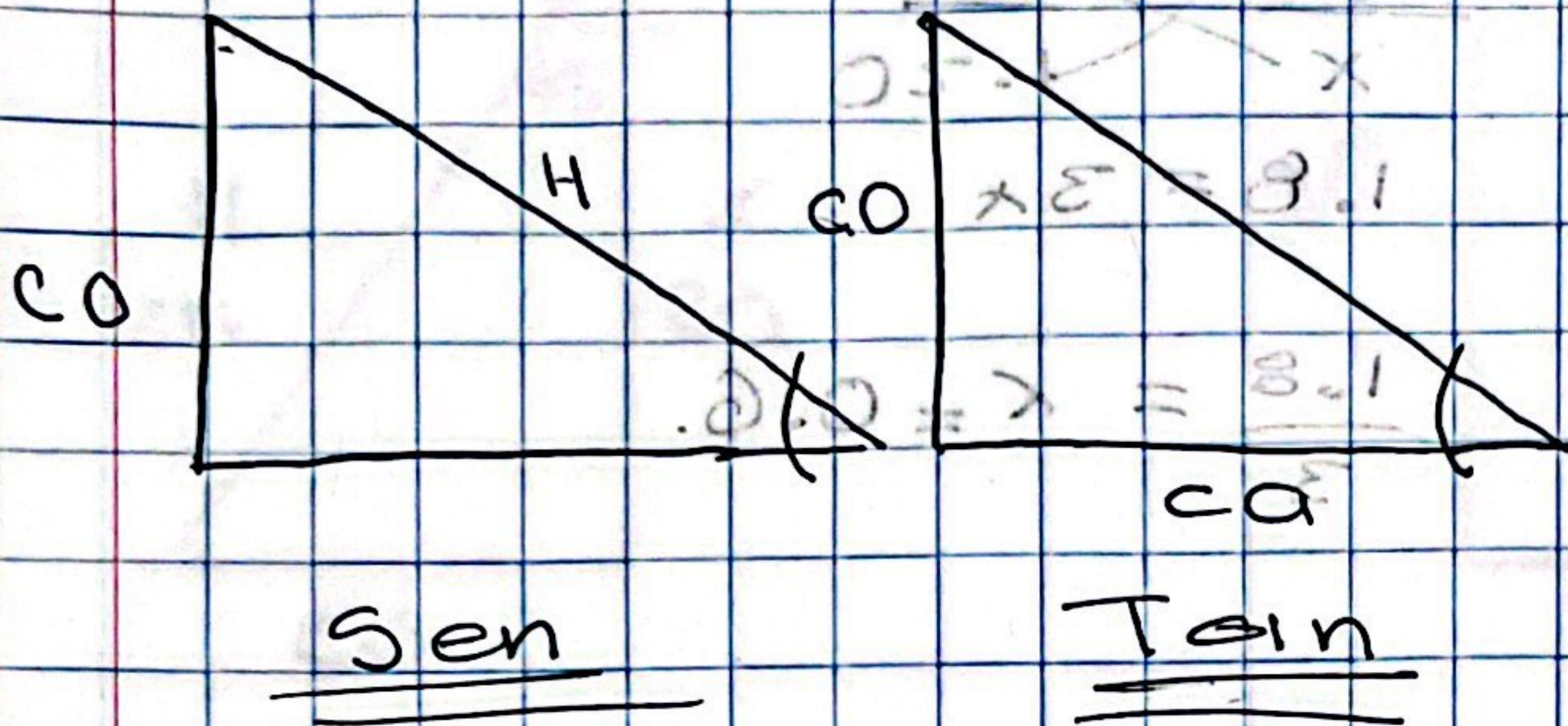
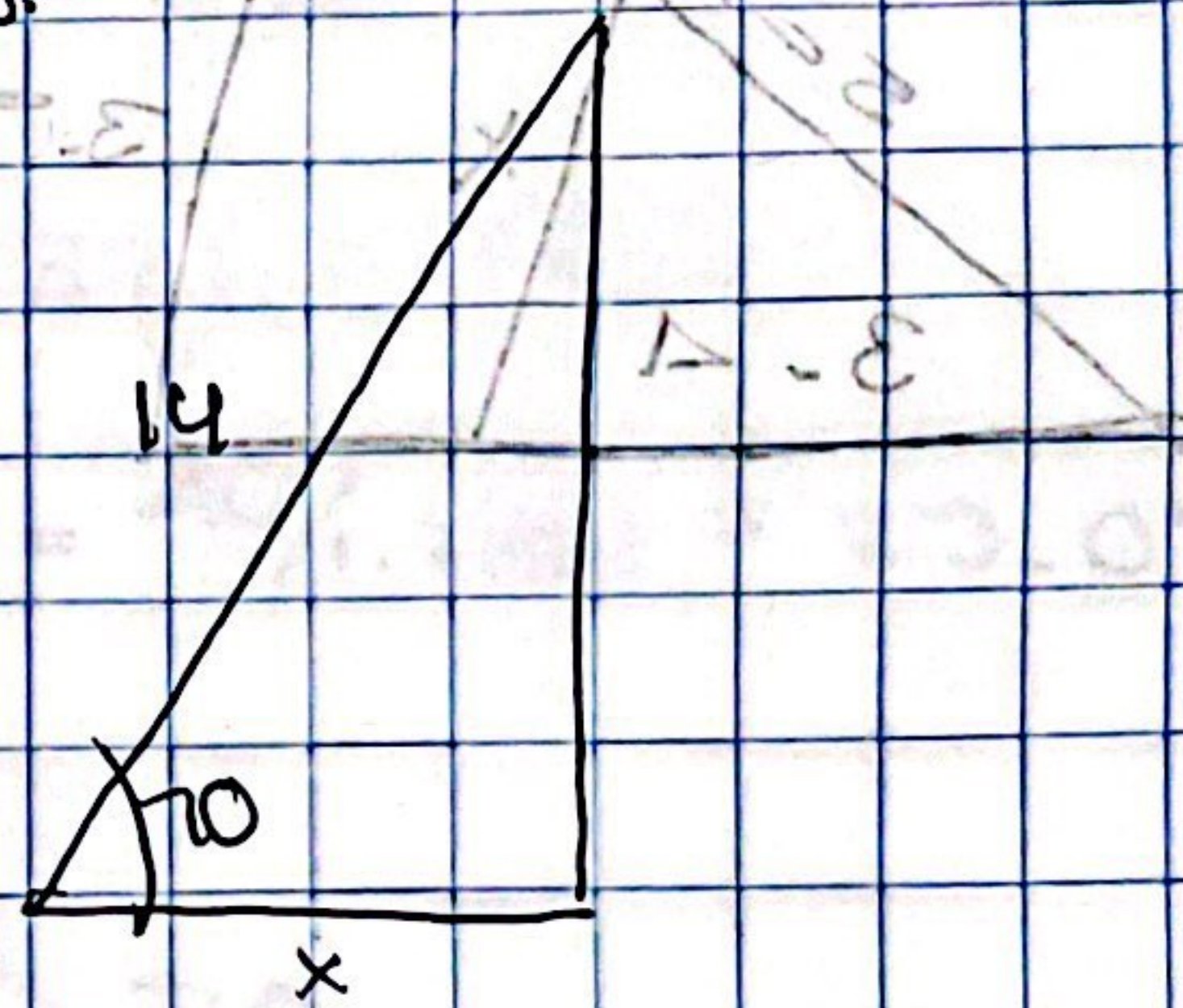
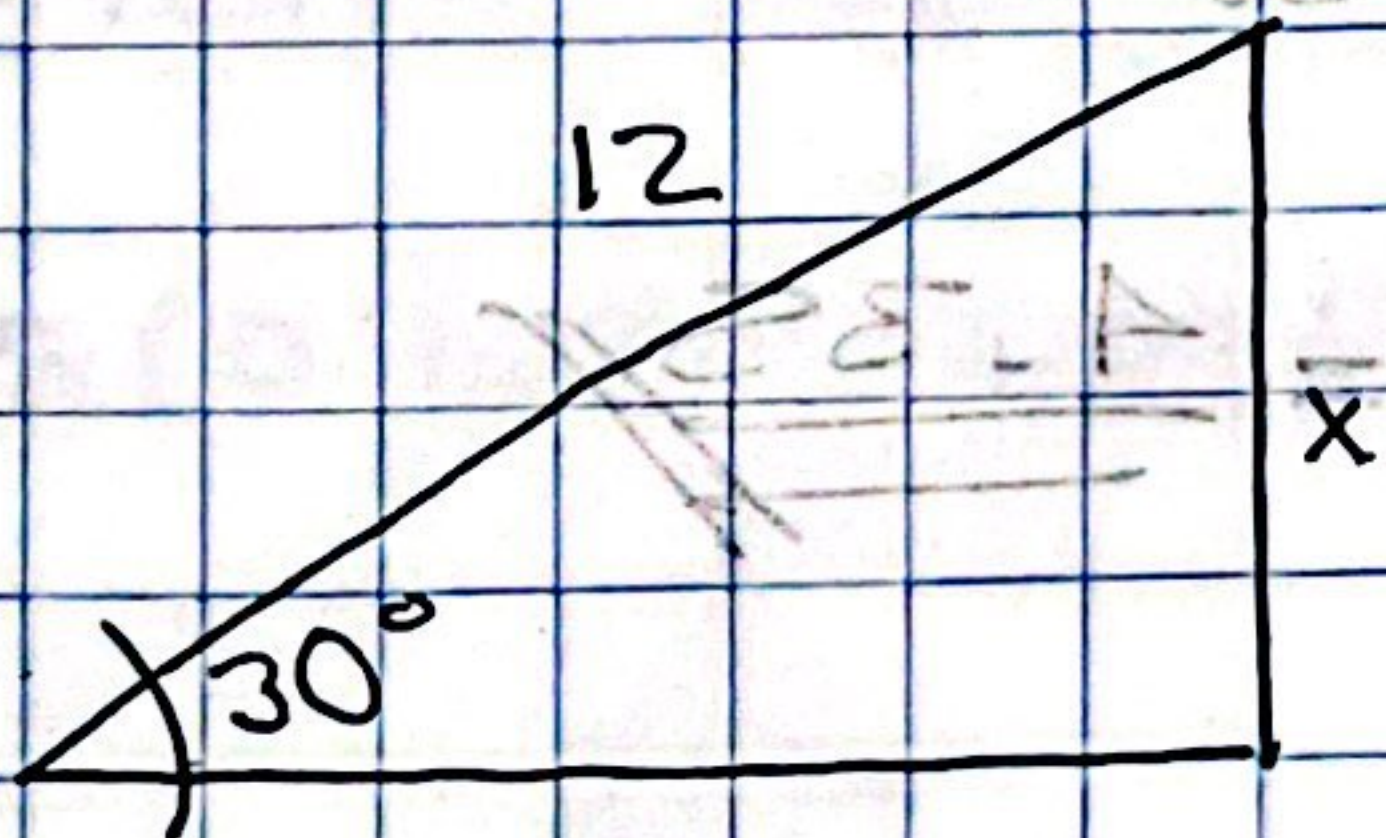


Observa los siguientes triángulos y selecciona la razón trigonométrica correcta

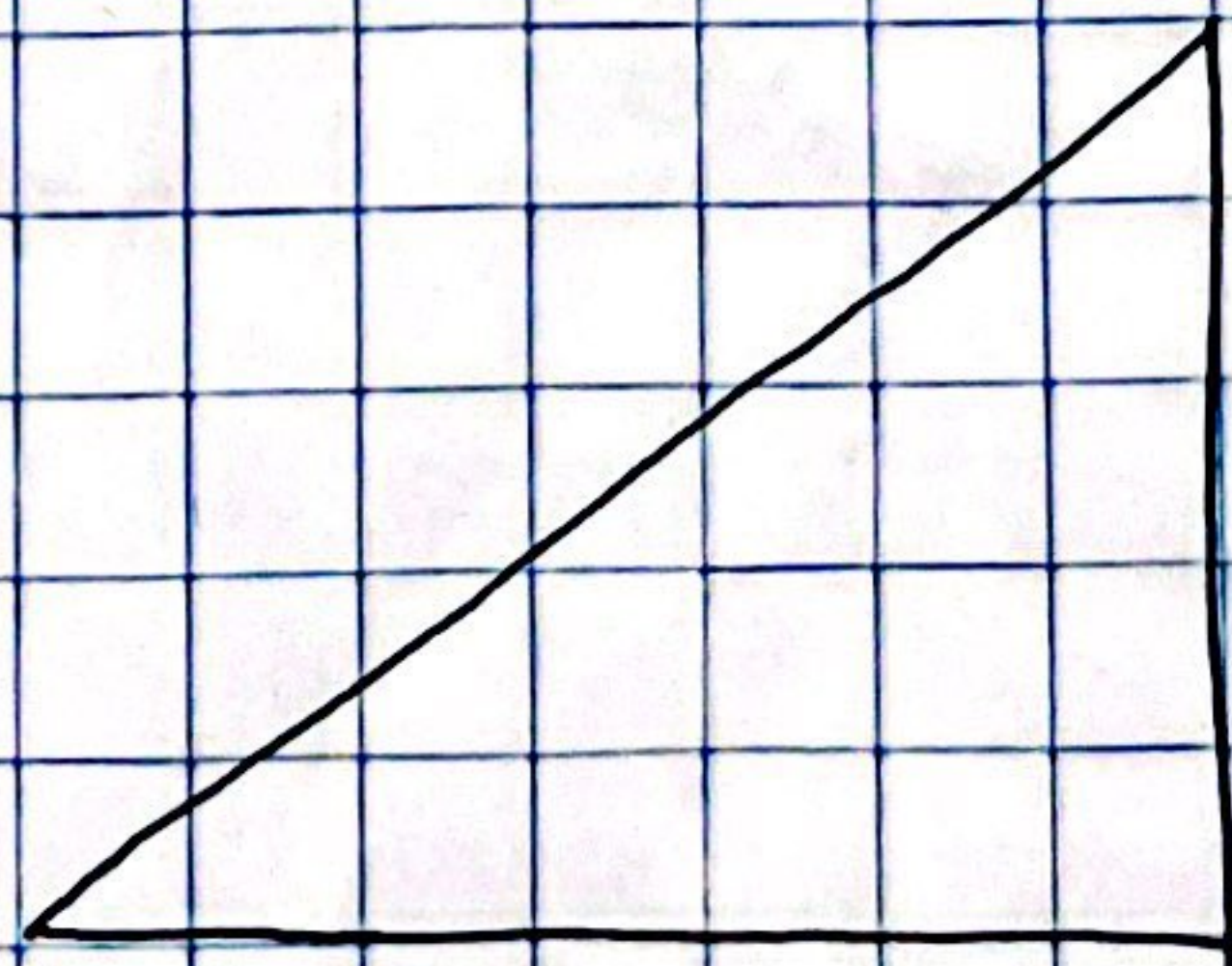
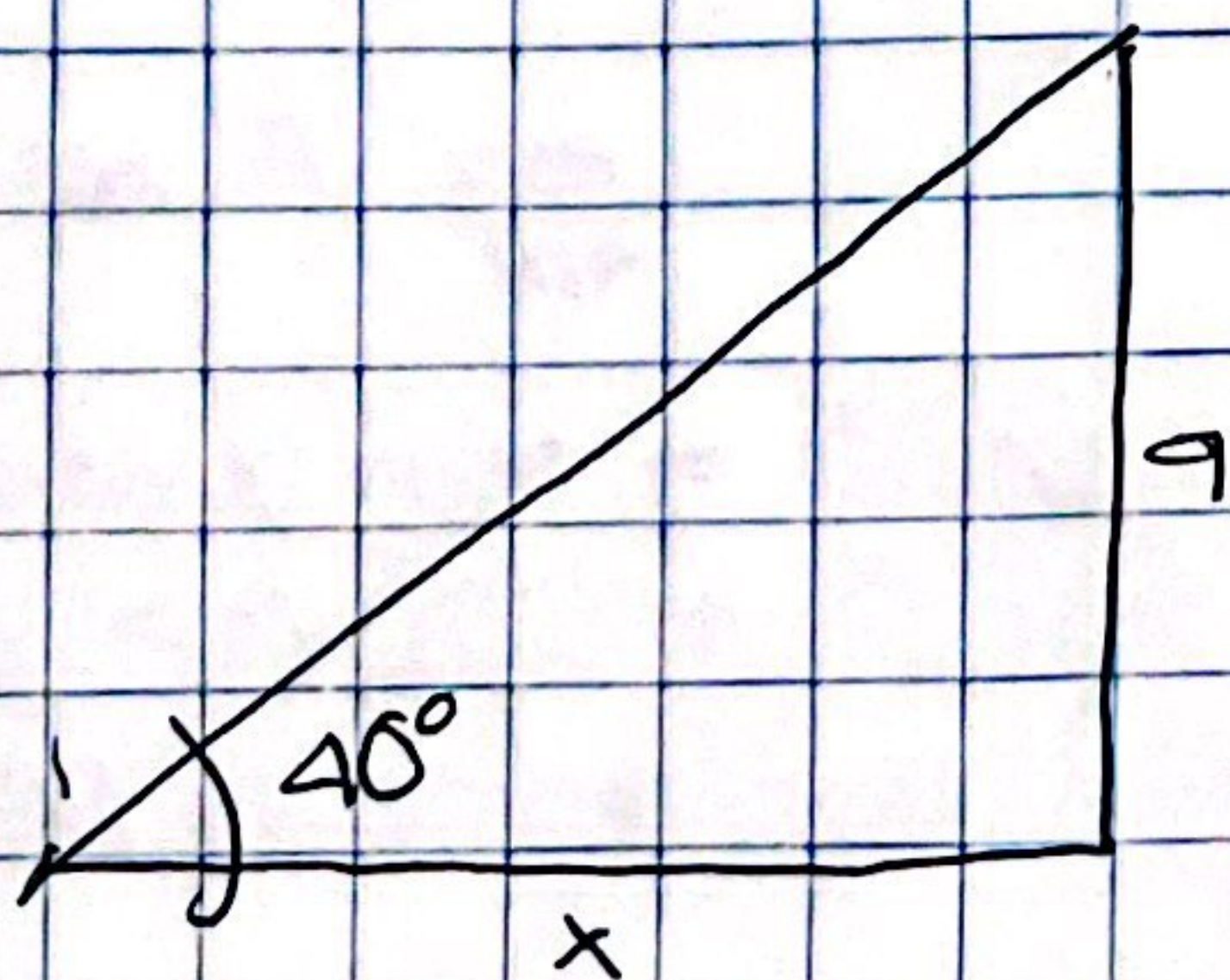


Selecciona la función trigonométrica correcta a los datos del triángulo.



Sen Coseno Tangente

Sen Coseno tangente

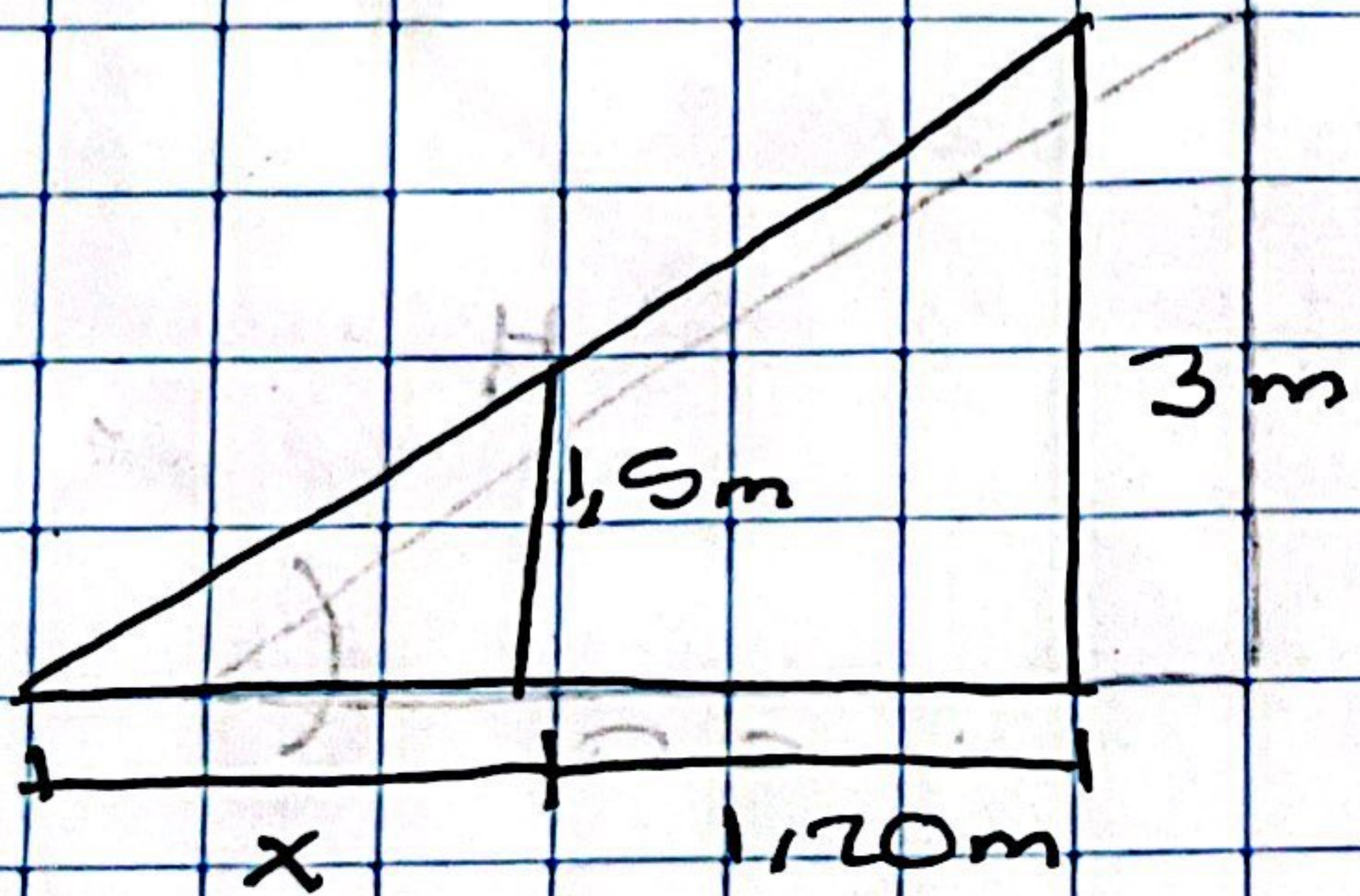


Sen Coseno Tangente

Sen Coseno Tangente

UPAK

Resuelve los ejercicios del teorema de Tales.

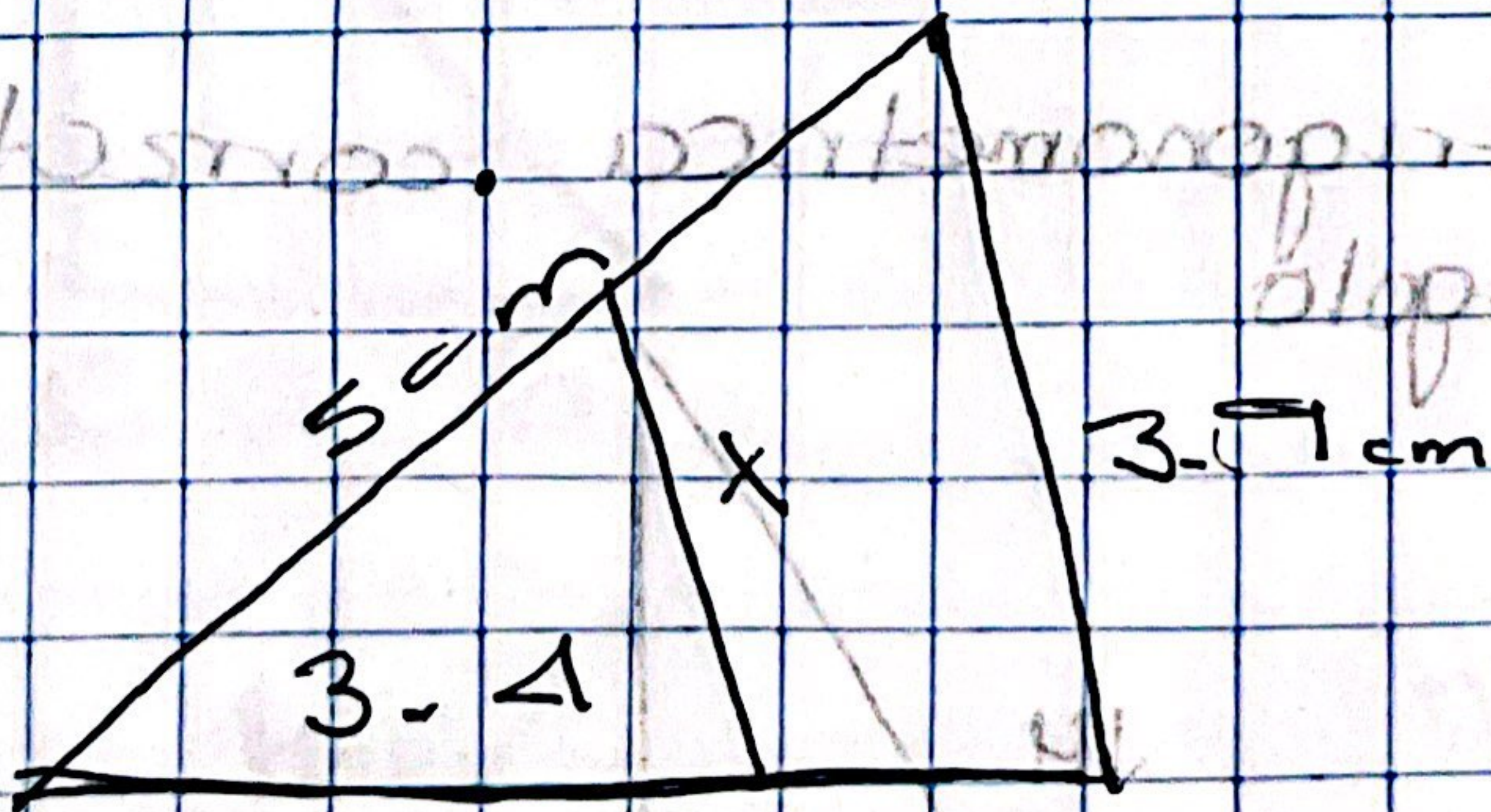


0.6

~~$$\frac{1.5}{x} = \frac{3}{1.20}$$~~

~~$$1.8 = 3x$$~~

~~$$\frac{1.8}{3} = x = 0.6$$~~



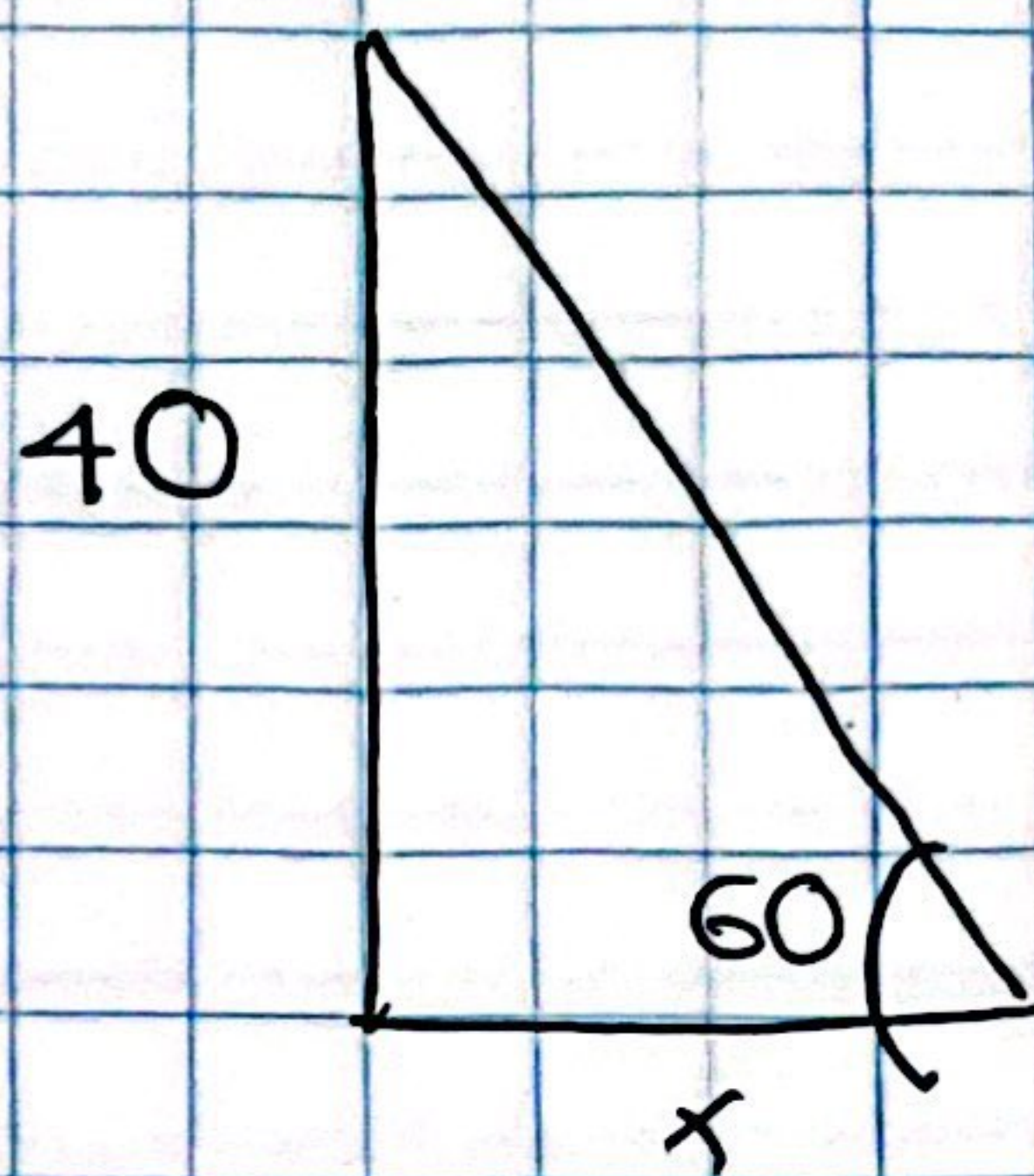
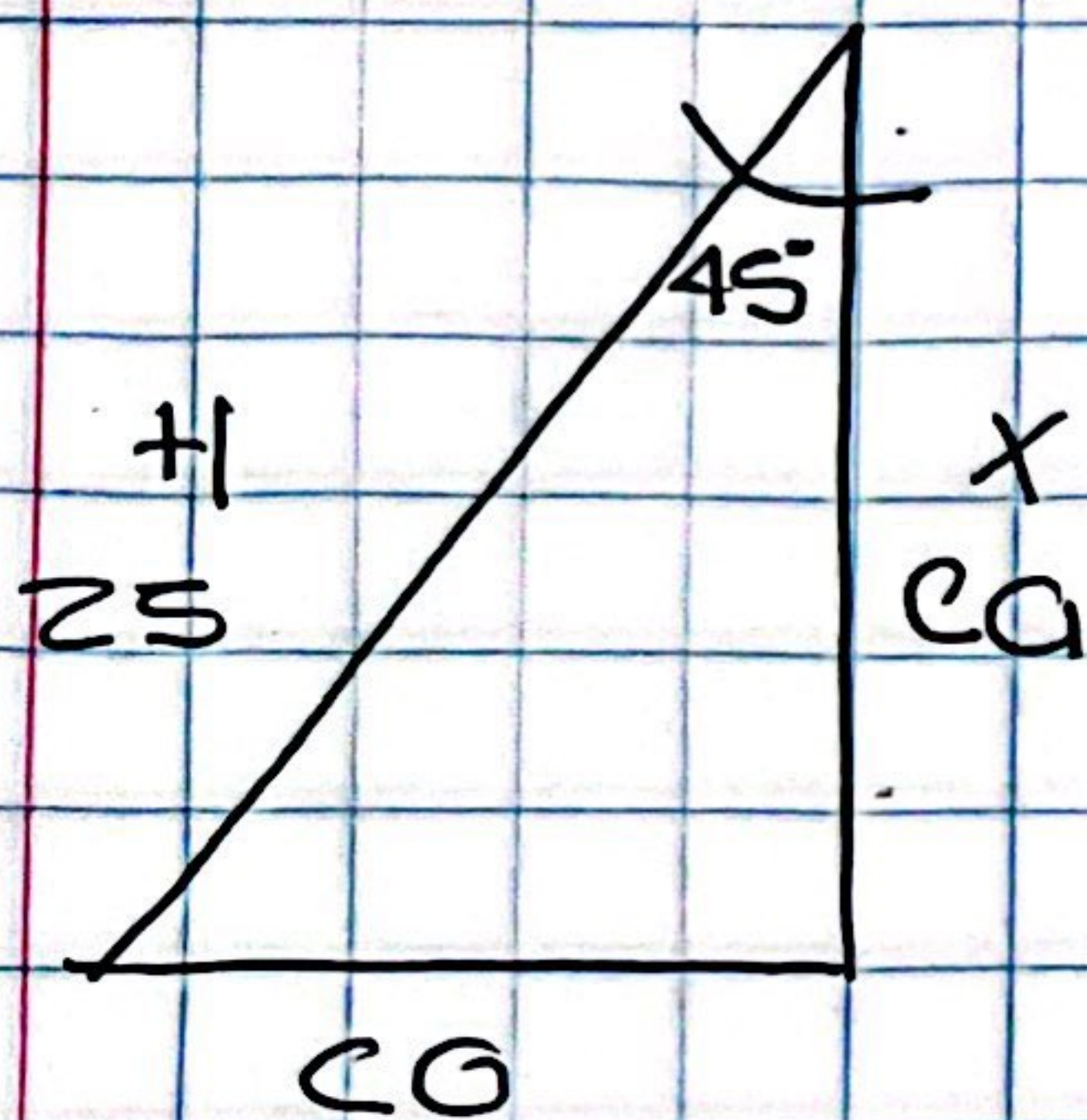
~~$$\frac{x}{3.4} = \frac{5}{1.7}$$~~

~~$$1.7 = 3.4x$$~~

~~$$x = \frac{1.7}{3.4} = \underline{\underline{0.5}}$$~~

03 / 04 / 23

Calcula el valor faltante.



$$\cos = \frac{ca}{HIP}$$

$$\tan = \frac{co}{ca}$$

$$\cos \angle = 45^\circ = \frac{x}{25}$$

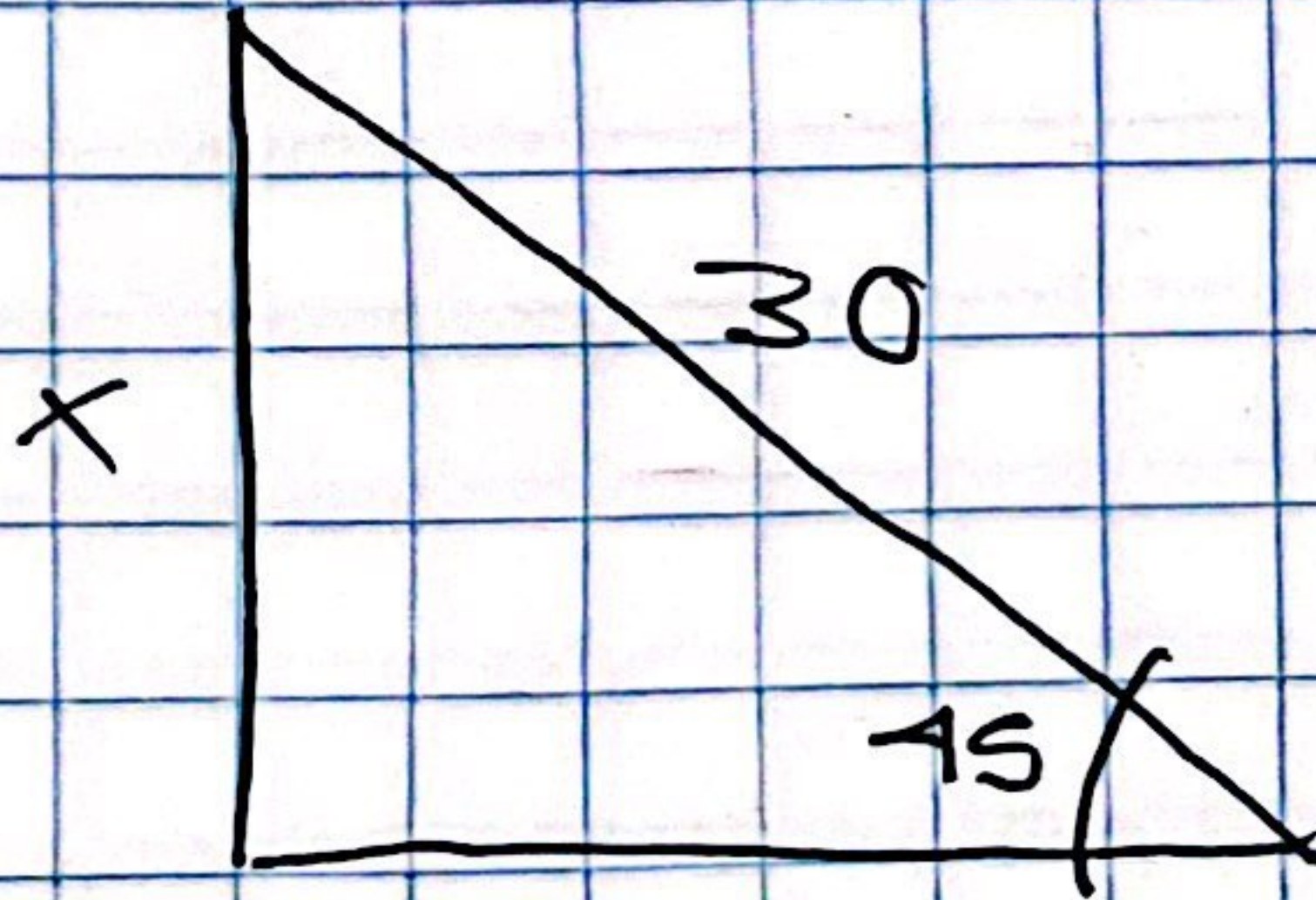
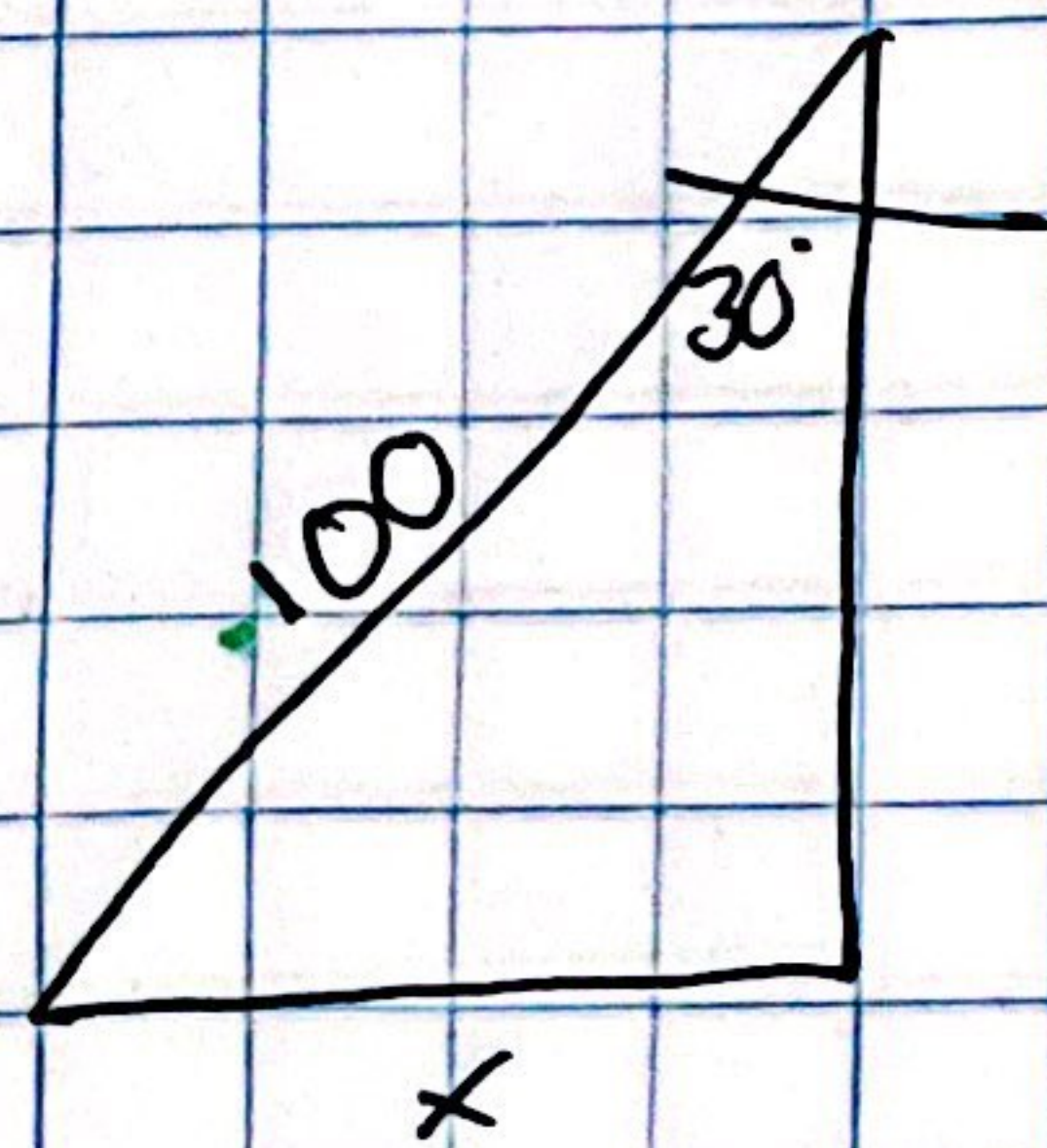
$$\tan = \angle 60^\circ = 40/x$$

$$0.7071 = x/25$$

$$1.7321 = 40/x$$

$$25(0.7071) = co = \underline{\underline{17.6775}}$$

$$x = 40/1.7321 = 23.09$$



$$\sin = \frac{co}{HIP}$$

$$\sin \theta = \frac{co}{HIP}$$

$$\sin \angle 30^\circ = x/100$$

$$\sin \angle 45^\circ = x/30$$

$$0.50000 = x/100$$

$$0.7071 = x/30$$

$$100(0.50000) = ca = \underline{\underline{50}}$$

$$30(0.7071) = co = 21.21$$