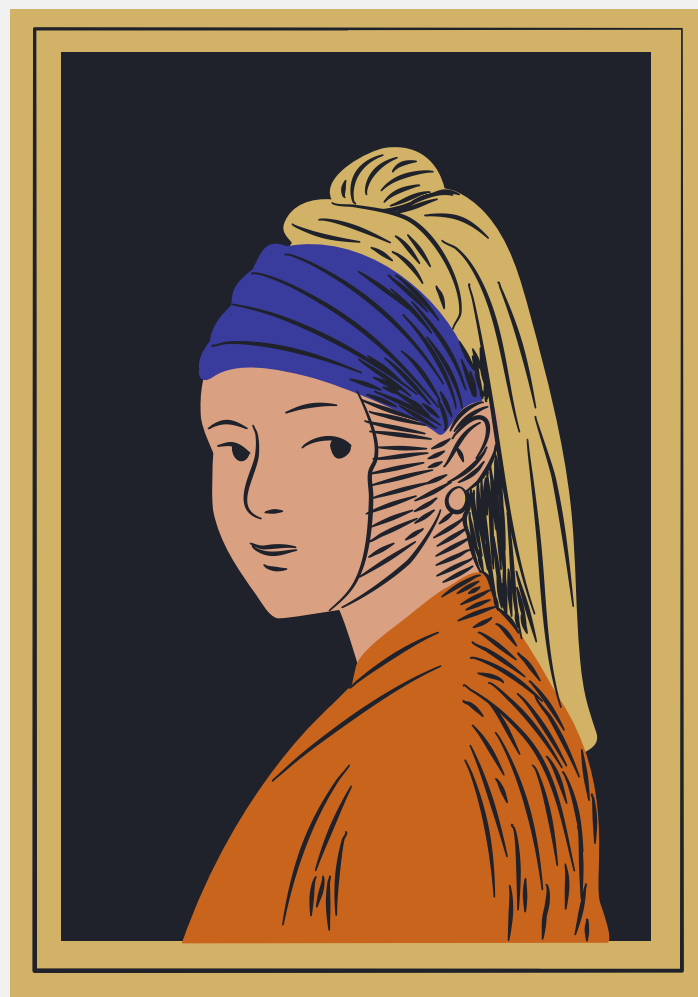


2023

# INGLES



**arq. Angel Gabriel Granados Perez**

lic. Ana Laura Culebro Torres

Activity Partial 4  
 Angel Gabriel Granados Pérez  
 30 de Marzo de 2023

UDS

2 Look at the map. Complete the sentences with the prepositions in the box.

- |  |   |  |
|--|---|--|
| <input type="checkbox"/> across from       | <input checked="" type="checkbox"/> between | <input checked="" type="checkbox"/> on               |
| <input checked="" type="checkbox"/> behind | <input checked="" type="checkbox"/> next to | <input checked="" type="checkbox"/> on the corner of |

- The English school is on Catherine Street.
- The hospital is behind the hotel.
- The Mexican restaurant is on the corner of Beatrice Street and Fourth Avenue.
- The bank is on Barbara Street, Between Sixth and Seventh Avenues.
- The bookstore is Next to the English school.
- The coffee shop is Across from the park.



Activity Partial 4  
Angel Gabriel Granados Pérez  
30/Marzo/2023

UDS

A Look at the map and complete the sentences. Then compare with a partner.



1. The coffee shop is off Second Avenue. It's Next to the shoe store.
2. The movie theater is between Park and Main. It's Next to the park.
3. The gas station is in front the parking lot. It's on First and Center.
4. The post office is on Center and Second. It's Next to the hospital.
5. The bank is between the restaurant and the department store. It's on Main Street.

B PAIR WORK Where are these places on the map? Ask and answer questions.

the park    the drugstore    the bookstore    the hospital    the shoe store

A: Where is the park?

B: It's between Park and First, across from the department store.

- Where is the ~~big~~ drugstore?

It's between Center and Second, across from the bookstore

- Where is the bookstore?

It's on the corner of Second and Center, next to post office

- Where is the hospital?

It's between First and Center, next to post office



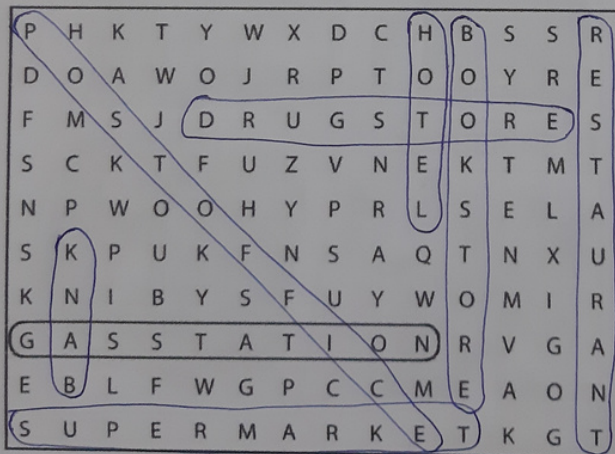
WORKBOOK

1 Places

**A** Complete these sentences with the correct places.  
 Write one letter on each line.

- We need gasoline for the car. Is there a g a s s t a t i o n near here?
- I'm going to go to the B a n k. I need some traveler's checks.
- I work at a B o o k s t o r e. I love books, so it's a great job.
- Are you going to the P o s t o f f i c e? I need some stamps.
- We don't have anything for dinner. Let's buy some food at the S u p e r m a r k e t.
- Tomorrow we're going to go to Paris for five days. We're going to stay at an expensive H o t e l.
- I have a stomachache. Can you buy some antacid at the D r u g s t o r e?
- Let's go out for lunch. There's a great Mexican R e s t a u r a n t downtown.

**B** Find and circle the places in part A in the puzzle.



Angel Gabriel Granados Pérez  
Activity partial 4  
30 de Marzo de 2023

UDS

**3** Where is it?

**A** Look at the map in Exercise 2 again. Where is each place? Write two sentences.

1. bookstore The bookstore is on the corner of Catherine Street and Fifth Avenue. It's next to the English school.
2. supermarket The supermarket it's behind the coffee shop. On the Diane st
3. department store The department store is on Beatrice st. It's next to the drugstore
4. gas station The gas station is on the corner of Ann st and Fourth Ave. It's behind the Mexican restaurant
5. Chinese restaurant The chinese restaurant it's between the barbara st and catherine st. It's across from the bank
6. hotel The hotel is across from the park. On the catherine st
7. post office The post office it's on the corner of Diane st. and seventh Ave. It's next to the cafe
8. drugstore The drugstore it's between the Mexicap restaurant and Department store. On Beatrice st.

**B** Where is your school? Draw a map. Then write two sentences.

