



Activity 4

Nombre del Alumno: Frida Lizbeth Reséndiz Salazar

Nombre del tema :

Parcial : 4

Nombre de la Materia : Inglés

Nombre del profesor: Ana Laura Culebro Torres

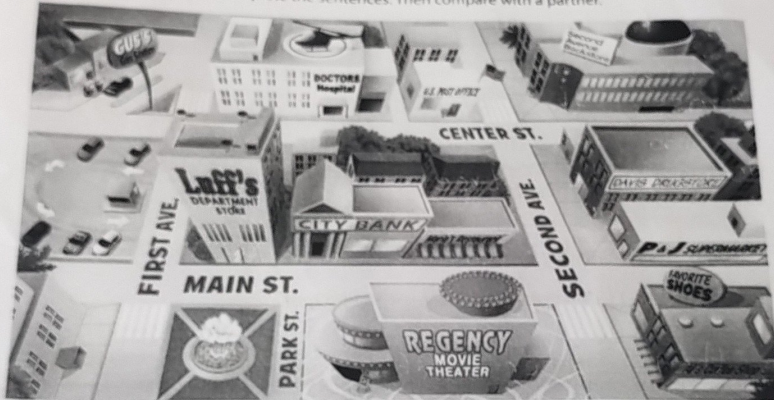
Nombre de la Licenciatura: Arquitectura

Cuatrimestre

Frida Lizbeth Resendiz Salaza UDS

Partial Activity 4

A Look at the map and complete the sentences. Then compare with a partner.



1. The coffee shop is on Second Avenue. It's next to the shoe store.
2. The movie theater is between Park and Main. It's next to the park.
3. The gas station is in front of the parking lot. It's on corner First and Center.
4. The post office is on the corner of Center and Second. It's next to the hospital.
5. The bank is between the restaurant and the department store. It's on Main Street.

B PAIR WORK Where are these places on the map? Ask and answer questions.

the park the drugstore the bookstore the hospital the shoe store

A: Where is the park?

B: It's between Park and First, across from the department store.

Partial Activity 4
 Frida Lizbeth Resendiz Salazar
WORKBOOK

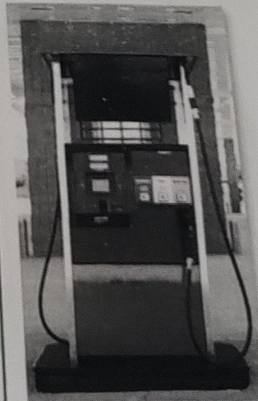
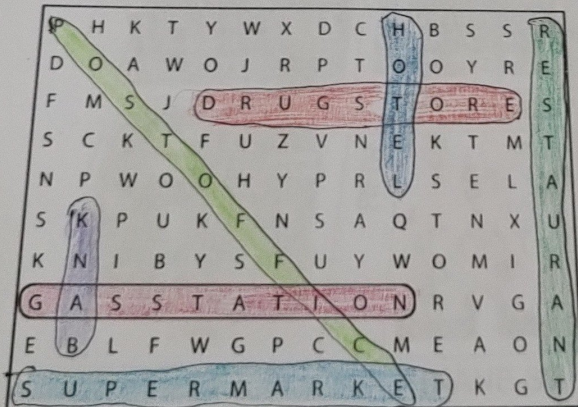
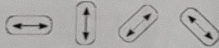
UDS

1 Places

A Complete these sentences with the correct places.
 Write one letter on each line.

- We need gasoline for the car. Is there a g a s s t a t i o n near here?
- I'm going to go to the b a n k. I need some traveler's checks.
- I work at a b o o k s t o r e. I love books, so it's a great job.
- Are you going to the p o s t o f f i c e? I need some stamps.
- We don't have anything for dinner. Let's buy some food at the s u p e r m a r k e t.
- Tomorrow we're going to go to Paris for five days. We're going to stay at an expensive h o t e l.
- I have a stomachache. Can you buy some antacid at the d r u g s t o r e?
- Let's go out for lunch. There's a great Mexican r e s t a u r a n t downtown.

B Find and circle the places in part A in the puzzle.



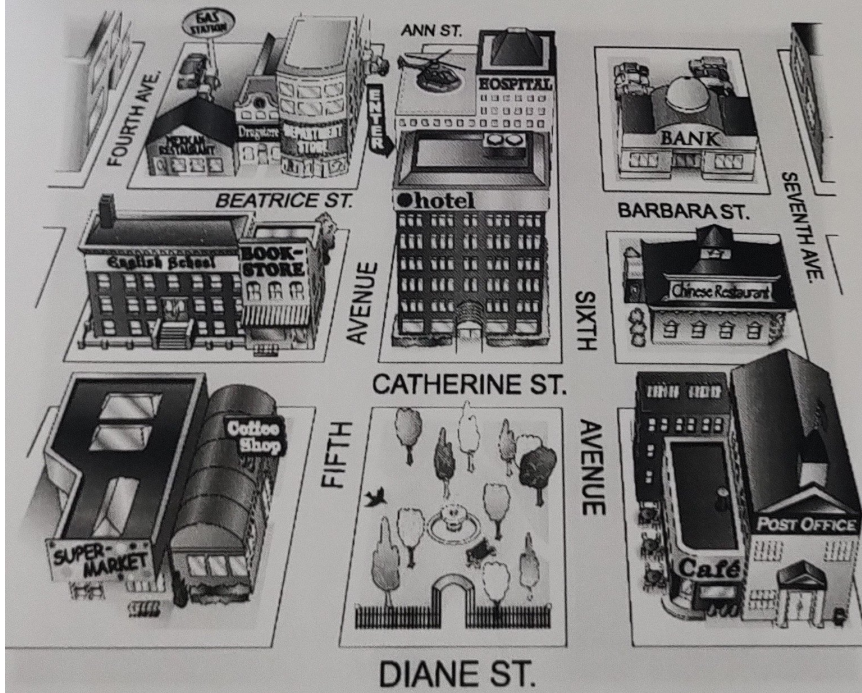
Partial activity 4
 Frida Lizbeth Resendiz Salazar

UDS

2 Look at the map. Complete the sentences with the prepositions in the box.

- | | | |
|--------------------------------------|----------------------------------|---|
| <input type="checkbox"/> across from | <input type="checkbox"/> between | <input checked="" type="checkbox"/> on |
| <input type="checkbox"/> behind | <input type="checkbox"/> next to | <input type="checkbox"/> on the corner of |

- The English school is on Catherine Street.
- The hospital is behind the hotel.
- The Mexican restaurant is between Beatrice Street and Fourth Avenue.
- The bank is on Barbara Street, on the corner of Sixth and Seventh Avenues.
- The bookstore is next to the English school.
- The coffee shop is across from the park.



Activity Partial 4

UDS

Frida Lizbeth Resendiz

3 Where is it?

A Look at the map in Exercise 2 again. Where is each place? Write two sentences.

1. bookstore The bookstore is on the corner of Catherine Street and Fifth Avenue. It's next to the English school.
2. supermarket The supermarket is behind the coffee shop on Diane St.
3. department store The department store is on Beatrice St. It's next to the drugstore.
4. gas station The gas station is on the corner of Ann St and Fourth Ave. It's behind the Mexican restaurant.
5. Chinese restaurant The Chinese restaurant is between the barbers and Catherine St. It's across from the bank.
6. hotel The hotel is across from the park on Catherine St.
7. post office The post office is on the corner of Diane St. and Seventh Ave. It's next to the cafe.
8. drugstore The drugstore is between the Mexican restaurant and Department store on Beatrice St.

B Where is your school? Draw a map. Then write two sentences.

