



**Mi Universidad**

*Iber Emanuel Vázquez Arguello*

*Actividad Parcial 4*

*Ingles II*

*Prof. Ana Laura Culebro*

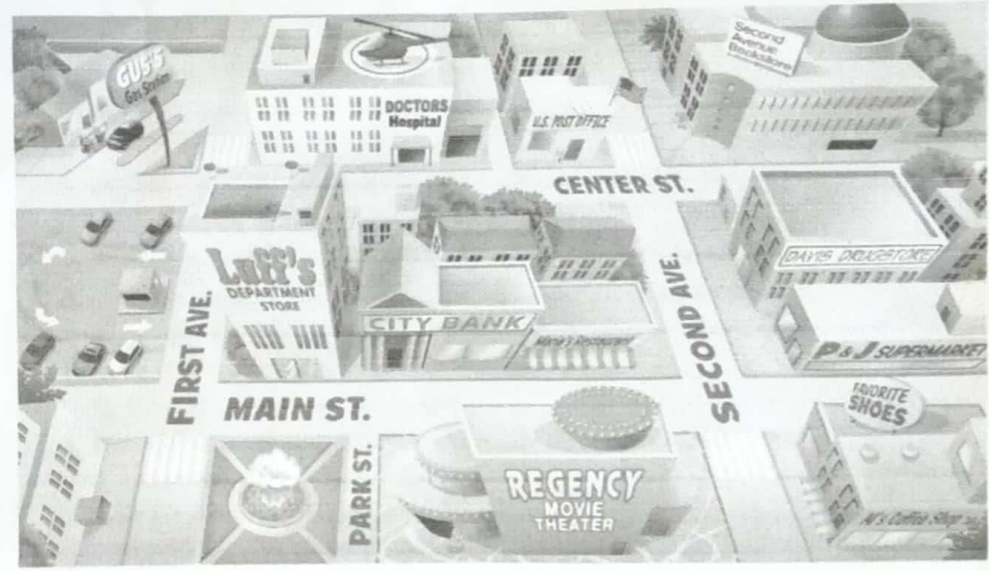
*Licenciatura en Arquitectura*

*Segundo Cuatrimestre*

Activity Partial 4  
Iber Emanuel Vazquez Argiella

UDS

A Look at the map and complete the sentences. Then compare with a partner.



1. The coffee shop is on Second Avenue. It's next to the shoe store.
2. The movie theater is on Park and Main. It's across from the park.
3. The gas station is across from the parking lot. It's on the corner of First and Center.
4. The post office is in corner of Center and Second. It's next to the hospital.
5. The bank is between the restaurant and the department store. It's on Main Street.

B PAIR WORK Where are these places on the map? Ask and answer questions.

the park    the drugstore    the bookstore    the hospital    the shoe store

A: Where is the park?

B: It's between Park and First, across from the department store.

*Handwritten signature*

Full name: Iber Emanuel Vázquez Argüello  
Activity Parcial 4

UDS

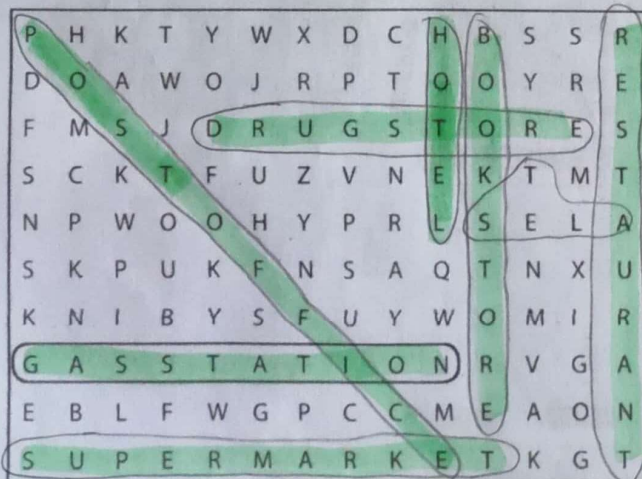
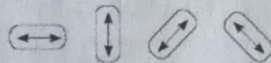
WORKBOOK

1 Places

**A** Complete these sentences with the correct places.  
Write one letter on each line.

- We need gasoline for the car. Is there a gas station near here?
- I'm going to go to the bank. I need some traveler's checks.
- I work at a bookstore. I love books, so it's a great job.
- Are you going to the post office? I need some stamps.
- We don't have anything for dinner. Let's buy some food at the supermarket.
- Tomorrow we're going to go to Paris for five days. We're going to stay at an expensive hotel.
- I have a stomachache. Can you buy some antacid at the drugstore?
- Let's go out for lunch. There's a great Mexican restaurant downtown.

**B** Find and circle the places in part A in the puzzle.



Full name: Iber Emanuel Vázquez Argüello  
Activity: Parcial 4

UDS

2 Look at the map. Complete the sentences with the prepositions in the box.

- |   |   |  |
|---|---|--|
| <input checked="" type="checkbox"/> across from | <input type="checkbox"/> between            | <input checked="" type="checkbox"/> on               |
| <input type="checkbox"/> behind                 | <input checked="" type="checkbox"/> next to | <input checked="" type="checkbox"/> on the corner of |

- The English school is on Catherine Street.
- The hospital is behind the hotel behind.
- The Mexican restaurant is on the corner of Beatrice Street and Fourth Avenue.
- The bank is on Barbara Street, between Sixth and Seventh Avenues.
- The bookstore is Next to the English school.
- The coffee shop is across from the park.





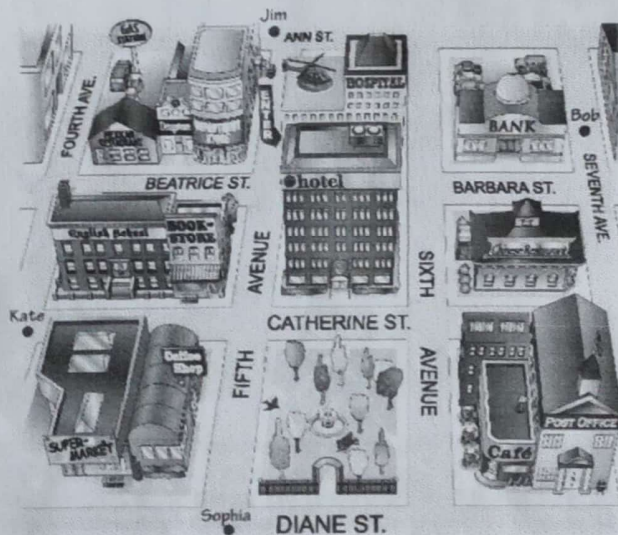
Full name: *Isabel Emanuel Vázquez Acgiella*  
Activity Period 4

UDS

**6** Look at the map. Give these people directions. Use the phrases and sentences in the box.

Walk up/Go up . . . Street/Avenue.  
Turn left on . . . Street/Avenue.  
Walk to . . . Street/Avenue.

Walk down/Go down . . . Street/Avenue.  
Turn right on . . . Street/Avenue.  
It's on the left/right.



1. Sophia is looking for the Mexican restaurant.

*Go up Fifth Avenue. Turn left on Beatrice Street.*

*Walk to Fourth Avenue. It's on the right.*

2. Kate is looking for the post office.

*Go down Fourth Ave. Turn left on Diane St.  
Walk to Seventh Ave. It's on the corner.*

3. Bob is looking for the supermarket.

*Go down Seventh Ave. Turn right on  
Diane street. Walk to Fourth Avenue, It's on the right.*

4. Jim is looking for the bank.

*Go down Fifth Avenue. Turn left on Barbara street  
Walk to Sixth Avenue. It's on the left.*