



ARQUITECTURA

ALUMNA: LOPEZ PEREZ JESSICA YAZMIN

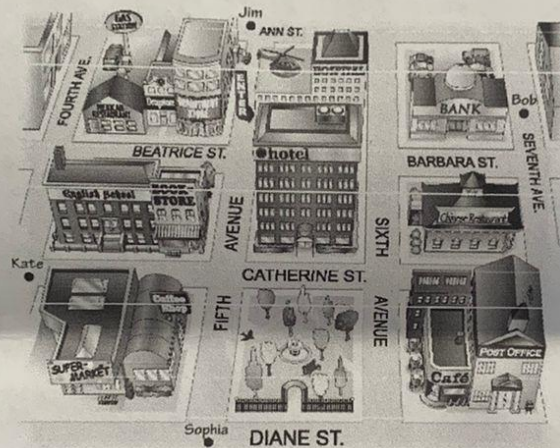
ASIGNATURA: INGLES

Activity Partial 4
Full name. Jessica Yaremin Lopez Perez

UDS

6 Look at the map. Give these people directions. Use the phrases and sentences in the box.

Walk up/Go up . . . Street/Avenue.
Walk down/Go down . . . Street/Avenue.
Turn left on . . . Street/Avenue.
Turn right on . . . Street/Avenue.
Walk to . . . Street/Avenue.
It's on the left/right.



- Sophia is looking for the Mexican restaurant.
Go up Fifth Avenue. Turn left on Beatrice Street.
Walk to Fourth Avenue. It's on the right.
- Kate is looking for the post office.
walk to catherine street. turn right on sixth avenue
walk to Diane street. It's on the left
- Bob is looking for the supermarket.
walk down go seventh avenue. Turn right on
Diane street walk to fourth ave. It's on the right
- Jim is looking for the bank.
walk down to fifth avenue. Turn left on catherine
street it's on the left on sixth avenue. Turn
left on barbara street it's on the left

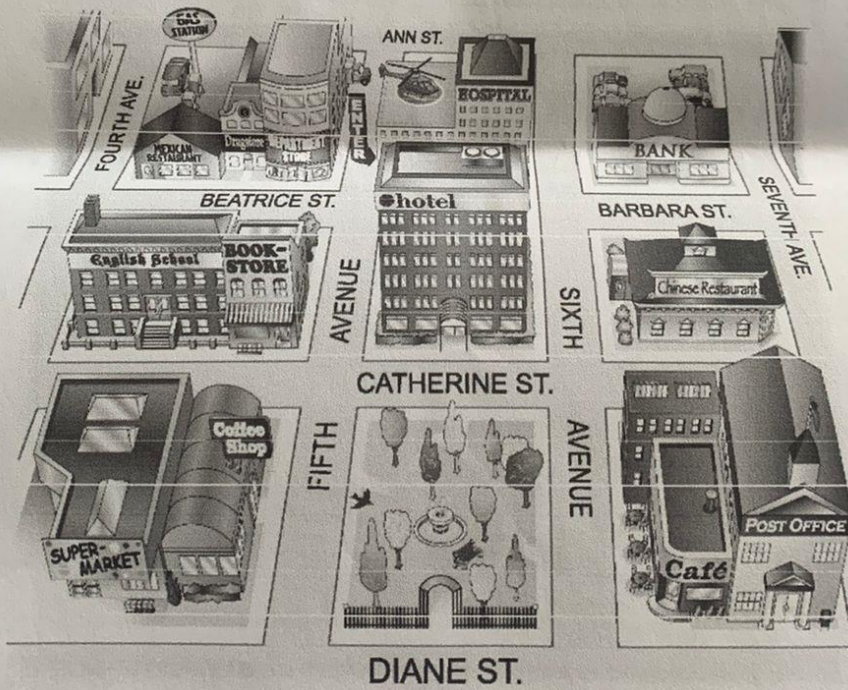
Activity partial 4
 Full name. Jessica Yazmin Lopez Perez

UDS

2 Look at the map. Complete the sentences with the prepositions in the box.

- | | | |
|--------------------------------------|----------------------------------|---|
| <input type="checkbox"/> across from | <input type="checkbox"/> between | <input checked="" type="checkbox"/> on |
| <input type="checkbox"/> behind | <input type="checkbox"/> next to | <input type="checkbox"/> on the corner of |

- The English school is on Catherine Street.
- The hospital is Behind the hotel.
- The Mexican restaurant is on the corner of Beatrice Street and Fourth Avenue.
- The bank is on Barbara Street, between Sixth and Seventh Avenues.
- The bookstore is next to the English school.
- The coffee shop is across from the park.



Activity Partial 4
 Full name: Jessica Yazmin López Pérez

UDS

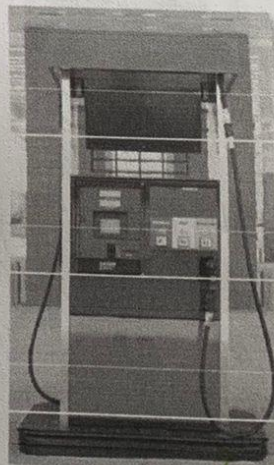
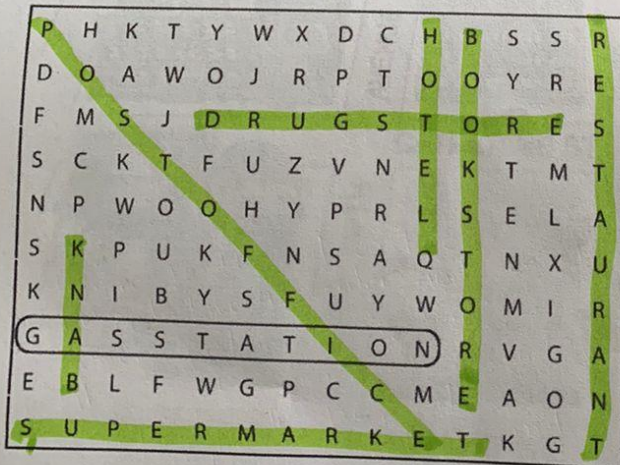
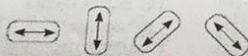
WORKBOOK

1 Places

A Complete these sentences with the correct places.
 Write one letter on each line.

- We need gasoline for the car. Is there a gas station near here?
- I'm going to go to the Bank. I need some traveler's checks.
- I work at a Bookstore. I love books, so it's a great job.
- Are you going to the post office? I need some stamps.
- We don't have anything for dinner. Let's buy some food at the supermarket.
- Tomorrow we're going to go to Paris for five days. We're going to stay at an expensive Hotel.
- I have a stomachache. Can you buy some antacid at the Drugstore?
- Let's go out for lunch. There's a great Mexican restaurant downtown.

B Find and circle the places in part A in the puzzle.

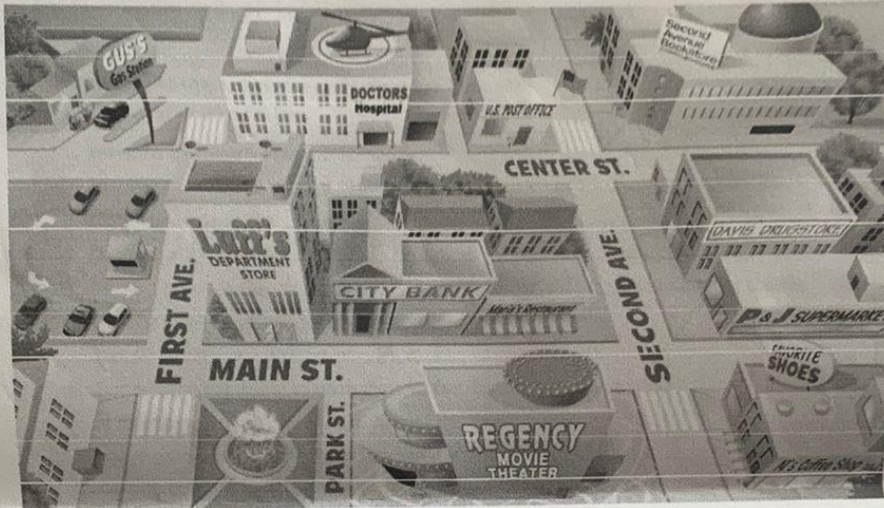


Activity Part 4

Full name. Jessica Yazmin Lopez Perez

UDS

A Look at the map and complete the sentences. Then compare with a partner.



1. The coffee shop is on Second Avenue. It's next to the shoe store.
2. The movie theater is on between Park and Main. It's across from the park. Across from
3. The gas station is next to the parking lot. It's on First and Center.
4. The post office is on Center and Second. It's next to the hospital.
5. The bank is next to the restaurant and the department store. It's on Main Street between

March 2

B PAIR WORK Where are these places on the map? Ask and answer questions.

the park the drugstore the bookstore the hospital the shoe store

A: Where is the park?

B: It's between Park and First, across from the department store.

- where is the drugstore?
it's between center and second, across from the bookstore
- where is the bookstore?
it's on the corner of second ave and center, next to post office
- where is the hospital?
it's between first ave and center, next to post office

Activity partial 4

Full name: Jessica Yazmin Lopez Perez

UDS

3 Where is it?

A Look at the map in Exercise 2 again. Where is each place? Write two sentences.

- 1. bookstore The bookstore is on the corner of Catherine Street and Fifth Avenue. It's next to the English school.
- 2. supermarket The supermarket is on the corner of Diana street and fourth avenue. It's next to the coffee shop
- 3. department store The department store is on the corner of Beatrice street and fifth avenue. It's next to the post office
- 4. gas station The gas station is between Beatrice street and fourth avenue. It's behind the park
- 5. Chinese restaurant Catherine street and sixth avenue. It's in front of the bank
- 6. hotel the hotel is on the corner of Catherine street and fifth avenue. It's behind the park
- 7. post office The post office is on the corner of Diana street and seventh avenue. It's next to cafe
- 8. drugstore The drugstore between Mexican restaurant and department store. It's behind English school

B Where is your school? Draw a map. Then write two sentences.

