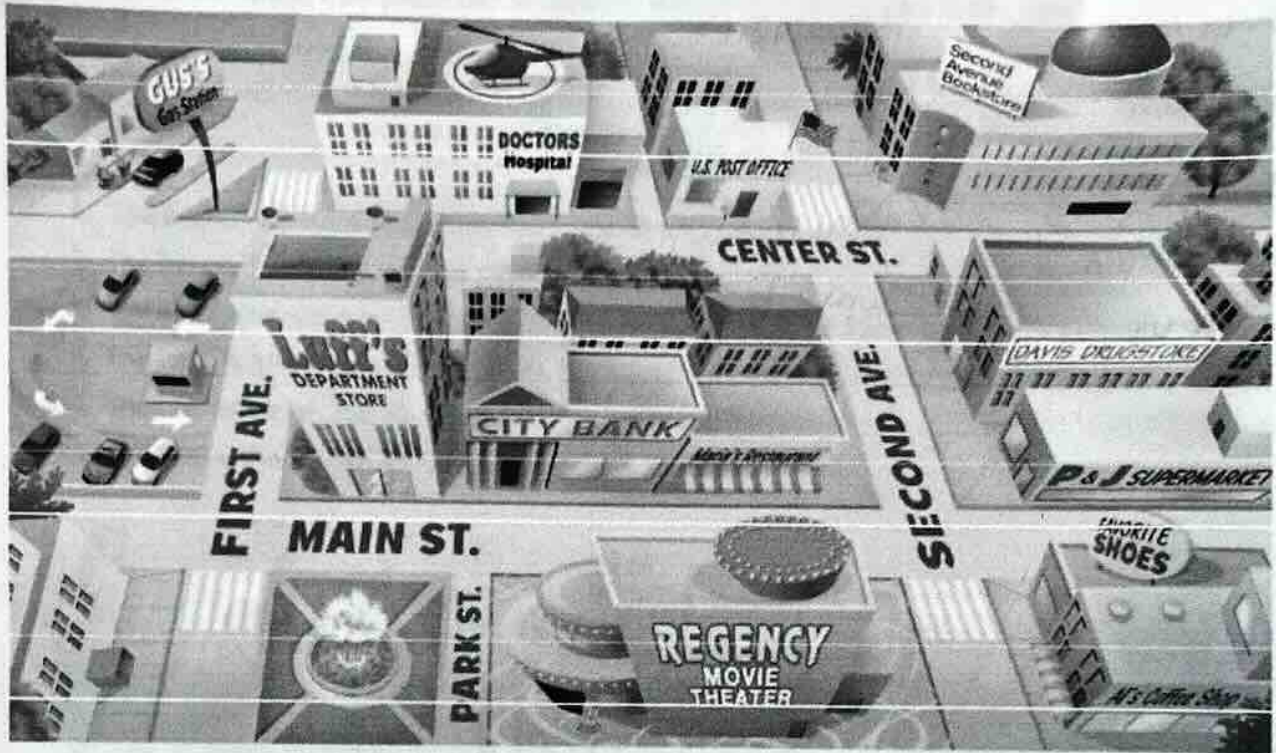


How can I get to..? → como llegar a
 where is the

A Look at the map and complete the sentences. Then compare with a partner.



1. The coffee shop is on Second Avenue. It's next to the shoe store.
2. The movie theater is on Park and Main. It's next to the park.
3. The gas station is on the parking lot. It's across First and Center.
4. The post office is on the corner of Center and Second. It's next to the hospital.
5. The bank is between the restaurant and the department store. It's on Main Street.

B PAIR WORK Where are these places on the map? Ask and answer questions.

the park the drugstore the bookstore the hospital the shoe store

A: Where is the park?

B: It's between Park and First, across from the department store.

down - ↓ abajo

up - ↑ arriba

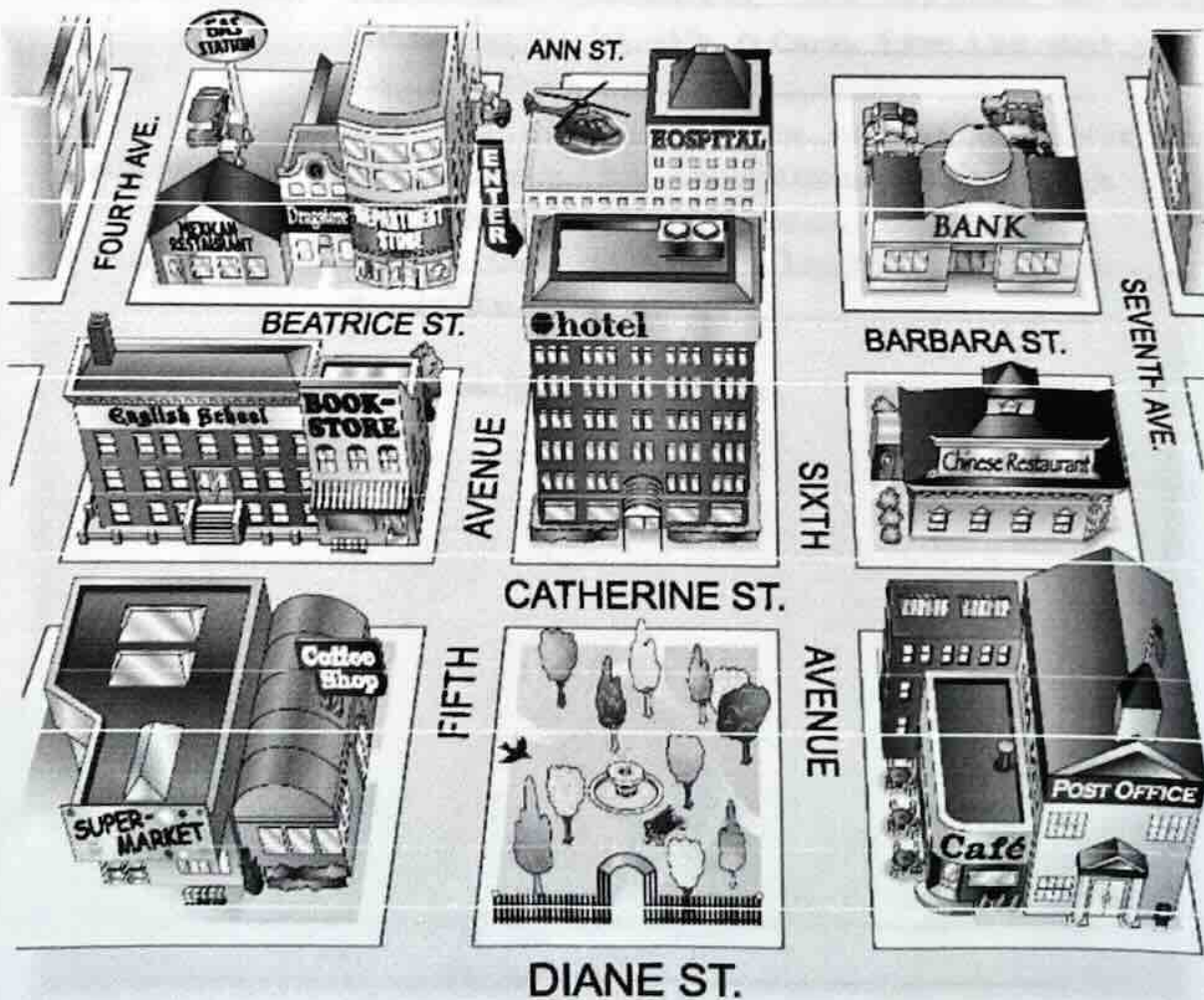
Handwritten signature in pink ink.

2

Look at the map. Complete the sentences with the prepositions in the box.

- | | | |
|--------------------------------------|----------------------------------|---|
| <input type="checkbox"/> across from | <input type="checkbox"/> between | <input checked="" type="checkbox"/> on |
| <input type="checkbox"/> behind | <input type="checkbox"/> next to | <input type="checkbox"/> on the corner of |

- The English school is on Catherine Street.
- The hospital is across from the hotel.
- The Mexican restaurant is on the corner of Beatrice Street and Fourth Avenue.
- The bank is on Barbara Street, next to Sixth and Seventh Avenues.
- The bookstore is between the English school.
- The coffee shop is behind the park.

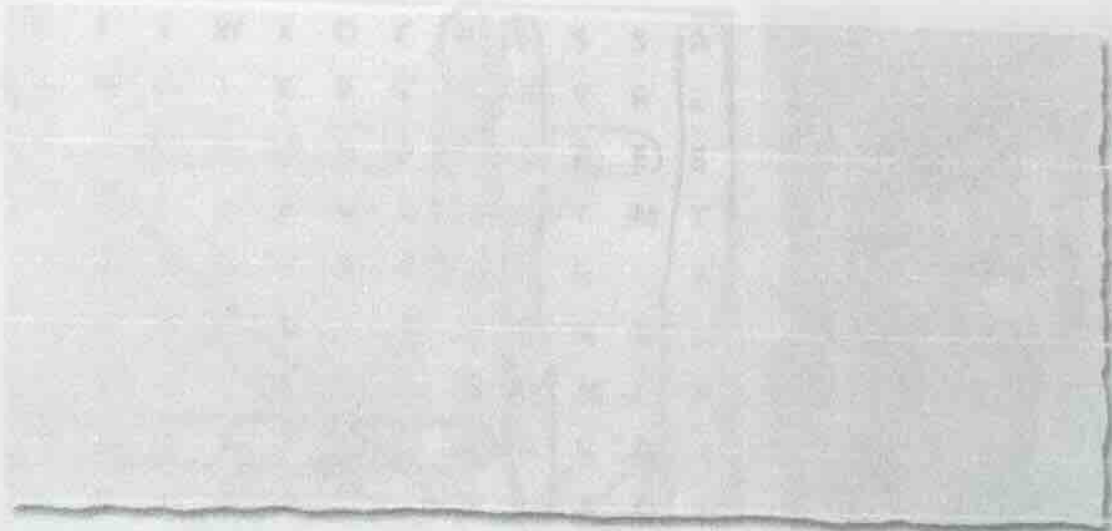


3 Where is it?

A Look at the map in Exercise 2 again. Where is each place? Write two sentences.

- 1. bookstore The bookstore is on the corner of Catherine Street and Fifth Avenue. It's next to the English school.
- 2. supermarket The supermarket It's behind the coffee Shop. On the Diane ST
- 3. department store The department store is on Beatrice ST. It's next to the drugstore
- 4. gas station The gas station is on the corner of Dan ST and Fourth Ave. It's behind the Mexican Restaurant
- 5. Chinese restaurant The Chinese Restaurant It's between the Barbara ST and Catherine ST. It's across from the park on the Catherine ST
- 6. hotel The post office is on the corner of Diane ST and Seventh Ave. It's next to the cafe
- 7. post office The drugstore It, between the Mexican Restaurant and department store, on Beatrice ST
- 8. drugstore

B Where is your school? Draw a map. Then write two sentences.



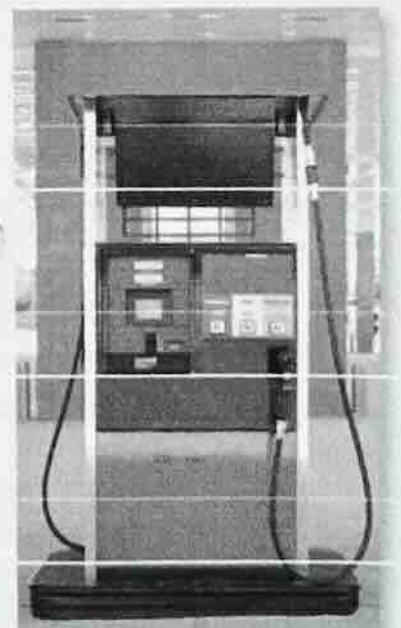
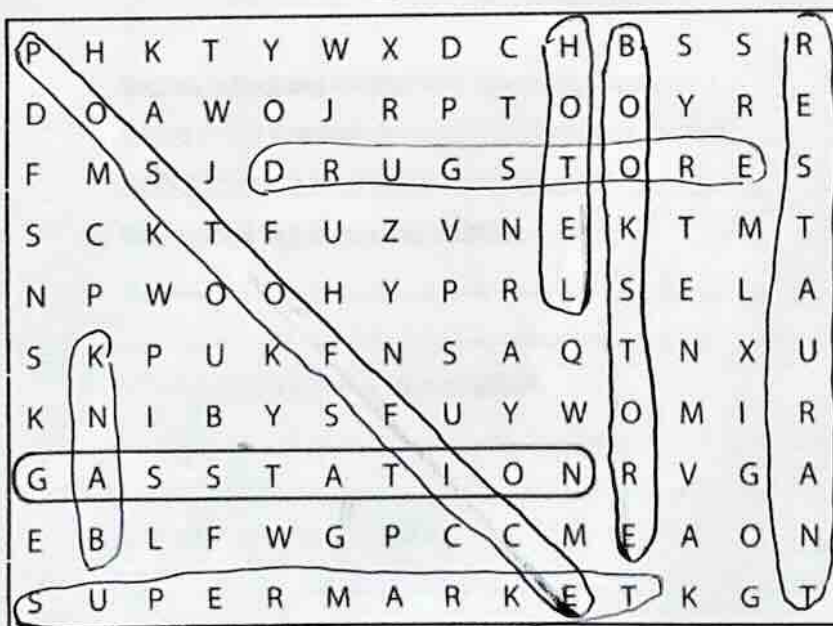
WORKBOOK

1 Places

A Complete these sentences with the correct places.
Write one letter on each line.

- We need gasoline for the car. Is there a g a s s t a t i o n near here?
- I'm going to go to the b a n k. I need some traveler's checks.
- I work at a b o o k s t o r e. I love books, so it's a great job.
- Are you going to the p o s t o f f i c e? I need some stamps.
- We don't have anything for dinner. Let's buy some food at the s u p e r m a r k e t.
- Tomorrow we're going to go to Paris for five days. We're going to stay at an expensive h o t e l.
- I have a stomachache. Can you buy some antacid at the d r u g s t o r e?
- Let's go out for lunch. There's a great Mexican r e s t a u r a n t downtown.

B Find and circle the places in part A in the puzzle.

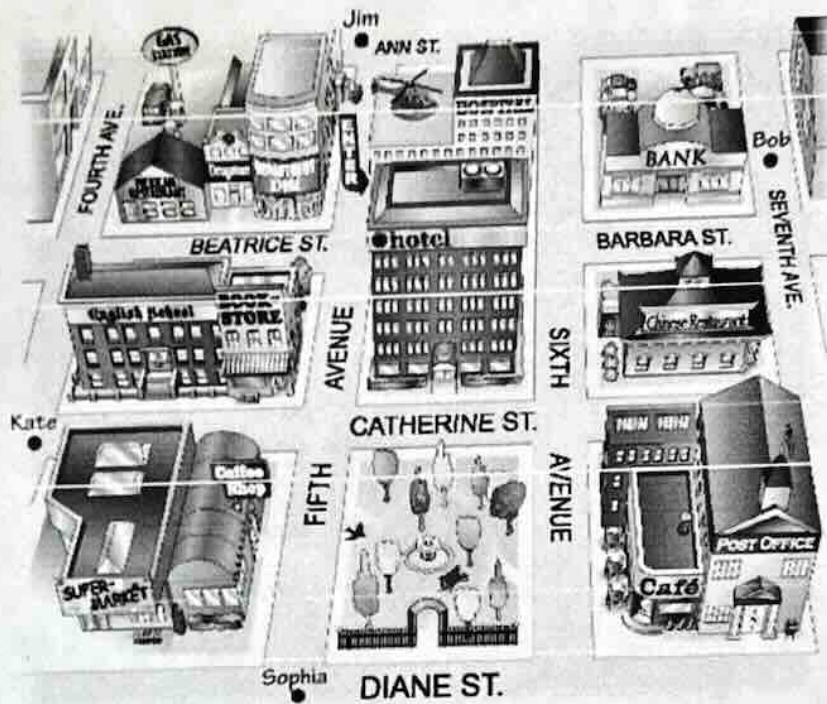


6

Look at the map. Give these people directions. Use the phrases and sentences in the box.

Walk up/Go up . . . Street/Avenue.
 Turn left on . . . Street/Avenue.
 Walk to . . . Street/Avenue.

Walk down/Go down . . . Street/Avenue.
 Turn right on . . . Street/Avenue.
 It's on the left/right.



1. Sophia is looking for the Mexican restaurant.

Go up Fifth Avenue. Turn left on Beatrice Street.

Walk to Fourth Avenue. It's on the right.

2. Kate is looking for the post office.

3. Bob is looking for the supermarket.

4. Jim is looking for the bank.
