

2.2.- Negative and Questions with be

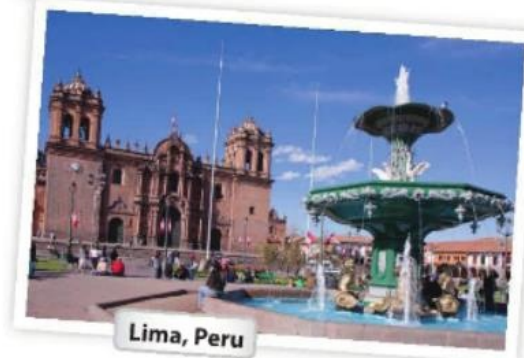
Negative statements and yes/no questions with be

I'm not from New York.	Are you from California?	I am.	I'm not.
You're not late.	Am I early?	you are.	you're not.
She's not from Russia.	Is she from Brazil?	she is.	she's not.
He's not from Italy.	Is he from Chile?	Yes, he is.	No, he's not.
It's not English.	Is it Korean?	it is.	it's not.
We're not from Japan.	Are you from China?	we are.	we're not.
You're not early.	Are we late?	you are.	you're not.
They're not in Mexico.	Are they in Canada?	they are.	they're not.

We're = We are

A Complete the conversations. Then practice with a partner.

- A: Hiroshi, are you and Maiko from Japan?
 B: Yes, we are .
 A: Oh? are you from Tokyo?
 B: No, i am not. is from Kyoto.
- A: is Laura from the U.S.?
 B: No, she's not. She's from the U.K.
 A: is she from London?
 B: Yes, she is . But her parents are from Italy. they not from the U.K. originally.
 A: is Laura's first language Italian?
 B: No, it's not. it's English.
- A: is Selina and Carlos from Mexico?
 B: No, they are not. they are from Brazil.
 A: are you from Brazil, too?
 B: No, i'm not. I'm from Peru.
 A: So, is your first language Spanish?
 B: Yes, it is .



B Match the questions with the answers. Then practice with a partner.

- | | |
|--|---|
| 1. Are you and your family from Canada? <u>d</u> | a. No, he's not. He's from Singapore. |
| 2. Is your first language English? <u>C</u> | b. Yes, she is. She's from California. |
| 3. Are you Japanese? <u>E</u> | c. No, it's not. It's Japanese. |
| 4. Is Mr. Ho from Hong Kong? <u>A</u> | d. No, we're not. We're from Australia. |
| 5. Is your mother from the U.S.? <u>B</u> | e. Yes, we are. We're from Kyoto. |

C PAIRWORK Write five questions like the ones in part B. Then ask and answer your questions with a partner.

1 Negative statements and yes/no questions with *be*

- ▶ Use *be* + *not* to form negative statements: Ana **isn't** a student. (NOT: ~~Ana is no a student.~~)
- ▶ *You* is a singular and a plural pronoun: Are **you** from Rio? Yes, **I am**./Yes, **we** are.

A Unscramble the words to write negative statements.

1. in California / not / New York City / is
New York City is not in California.
2. London / not / from / we're
WERE NOT FROM LONDON
3. not / you and Tim / in my class / are
YOU AND TIM ARE NOT IS MY CLASS
4. is / my first language / Spanish / not
SPANISH IS NOT MY FIRST LANGUAGE
5. from / my mother / not / is / Seoul
MY MOTHER IS NOT SEOUL
6. my keys / not / are / they
THEY NOT ARE MY KEYS

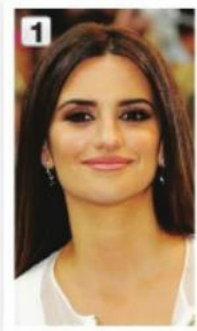
B Complete the conversations.

1. A: ^{Are} you and your family from Mexico?
B: No, ^{WERE} not. ^{WE'RE} from Guatemala.
2. A: ^{IS} your first language English?
B: Yes, it ^{IS} My parents ^{ARE} from Australia.
3. A: ^{ARE} Kenji and his friend Japanese?
B: Yes, ^{THEY} are. But ^{THEY ARE} in the U.S. now.
4. A: ^{ARE} my mother and I late?
B: No, ^{YOU ARE} not. ^{YOU ARE} early!

2.2.- Where are they from?

WHERE ARE THEY FROM?

A Where are these people from? Check (✓) your guesses.



Penelope Cruz

- Mexico
- France
- Spain



Robert Pattinson

- the U.S.
- the U.K.
- Canada



Haru Nomura

- South Korea
- Japan
- China



Cate Blanchett

- Australia
- New Zealand
- South Africa



Javier Hernández

- Brazil
- Mexico
- Chile

B PAIR WORK Compare your guesses. Then check your answers at the bottom of the page.

A: Is Penelope Cruz from Mexico?

B: No, she's not.

A: Is she from France?

Answers: 1. Spain 2. the U.K. 3. Japan 4. Australia 5. Mexico

CONVERSATION *He's cute.*

Listen and practice.

Emma: Who's that?

Jill: He's my brother.

Emma: Wow! He's cute. What's his name?

Jill: James. We call him Jim.

Emma: Oh, how old is he?

Jill: He's twenty-one years old.

Emma: What's he like? Is he nice?

Jill: Yes, he is – and he's very smart, too!

Emma: And who's that?

Jill: My sister Tammy. She's only twelve. She's the baby of the family.

