



Nombre de alumnos: Gabriela Josselyn Arguello Guerrero

Nombre del profesor: Andrea Berenice Segura León

Nombre del trabajo: Activity 2

Materia: Inglés

Grado:

Grupo:

Comitán de Domínguez Chiapas.

2.2.- Negative and Questions with be

Negative statements and yes/no questions with be

I'm **not** from New York.
 You're **not** late.
 She's **not** from Russia.
 He's **not** from Italy.
 It's **not** English.
 We're **not** from Japan.
 You're **not** early.
 They're **not** in Mexico.

We're = We are

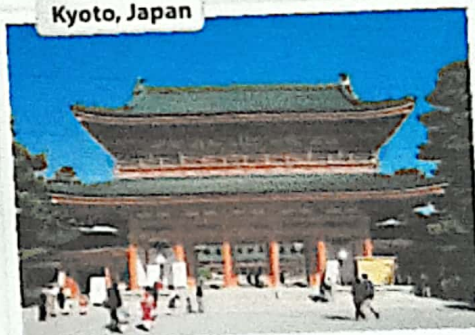
Are **you** from California?
 Am **I** early?
 Is **she** from Brazil?
 Is **he** from Chile?
 Is **it** Korean?
 Are **you** from China?
 Are **we** late?
 Are **they** in Canada?

	I am.	I'm	not.
	you are.	you're	not.
	she is.	she's	not.
Yes,	he is.	No, he's	not.
	it is.	it's	not.
	we are.	we're	not.
	you are.	you're	not.
	they are.	they're	not.

A Complete the conversations. Then practice with a partner.

- A: Hiroshi, are you and Maiko from Japan?
 B: Yes, we are.
 A: Oh? are you from Tokyo?
 B: No, I am not. am from Kyoto.
- A: is Laura from the U.S.?
 B: No, she is not. She's from the U.K.
 A: is she from London?
 B: Yes, she is. But her parents are from Italy. she is not from the U.K. originally.
 A: is Laura's first language Italian?
 B: No, she is not. she is English.
- A: Are Selina and Carlos from Mexico?
 B: No, they are not. They are from Brazil.
 A: Are you from Brazil, too?
 B: No, I am not. I'm from Peru.
 A: So, is your first language Spanish?
 B: Yes, it is.

Kyoto, Japan



Lima, Peru

B Match the questions with the answers. Then practice with a partner.

- | | |
|--|---|
| 1. Are you and your family from Canada? <u>d</u> | a. No, he's not. He's from Singapore. |
| 2. Is your first language English? <u>c</u> | b. Yes, she is. She's from California. |
| 3. Are you Japanese? <u>e</u> | c. No, it's not. It's Japanese. |
| 4. Is Mr. Ho from Hong Kong? <u>a</u> | d. No, we're not. We're from Australia. |
| 5. Is your mother from the U.S.? <u>b</u> | e. Yes, we are. We're from Kyoto. |

C PAIR WORK Write five questions like the ones in part B. Then ask and answer your questions with a partner.

1 Negative statements and yes/no questions with be

- ▶ Use *be* + *not* to form negative statements: Ana **isn't** a student. (NOT: ~~Ana is no~~ a student.)
- ▶ *You* is a singular and a plural pronoun: Are **you** from Rio? Yes, I am./Yes, **we** are.

A Unscramble the words to write negative statements.

1. in California / not / New York City / is
New York City is not in California.
2. London / not / from / we're
We're not from London
3. not / you and Tim / in my class / are
You and Tim are not in my class
4. is / my first language / Spanish / not
My first language is not Spanish
5. from / my mother / not / is / Seoul
My mother is not from Seoul
6. my keys / not / are / they
They are not my keys

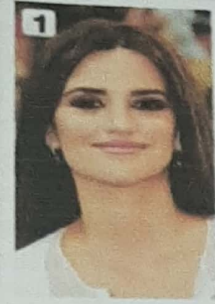
B Complete the conversations.

1. A: Are you and your family from Mexico?
B: No, we are not. We are from Guatemala.
2. A: Is your first language English?
B: Yes, it is. My parents they are from Australia.
3. A: Is Kenji and his friend Japanese?
B: Yes, they are. But live in the U.S. now.
4. A: Are my mother and I late?
B: No, we are not. We are early!

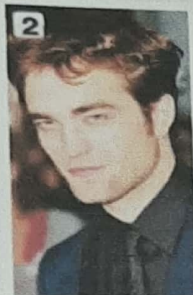
2.2.- Where are they from?

WHERE ARE THEY FROM?

A Where are these people from? Check (✓) your guesses.



- Penelope Cruz**
- Mexico
 - France
 - Spain



- Robert Pattinson**
- the U.S.
 - the U.K.
 - Canada



- Haru Nomura**
- South Korea
 - Japan
 - China



- Cate Blanchett**
- Australia
 - New Zealand
 - South Africa



- Javier Hernández**
- Brazil
 - Mexico
 - Chile

B PAIR WORK Compare your guesses. Then check your answers at the bottom of the page.

- A: Is Penelope Cruz from Mexico?
 B: No, she's not.
 A: Is she from France?

Answers: 1. Spain 2. the U.K. 3. Japan 4. Australia 5. Mexico

CONVERSATION *He's cute.*

🎧 Listen and practice.

- Emma: Who's that?
 Jill: He's my brother.
 Emma: Wow! He's cute. What's his name?
 Jill: James. We call him Jim.
 Emma: Oh, how old is he?
 Jill: He's twenty-one years old.
 Emma: What's he like? Is he nice?
 Jill: Yes, he is - and he's very smart, too!
 Emma: And who's that?
 Jill: My sister Tammy. She's only twelve. She's the baby of the family.

