



**Mi Universidad**

*Nombre del Alumno: Iván Alejandro Esponda López*

*Parcial: II*

*Nombre de la Materia: Ingles I*

*Nombre del profesor: Andrea Berenice Segura*

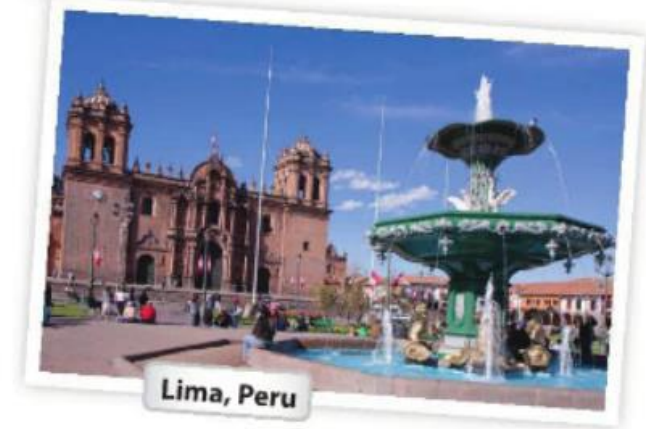
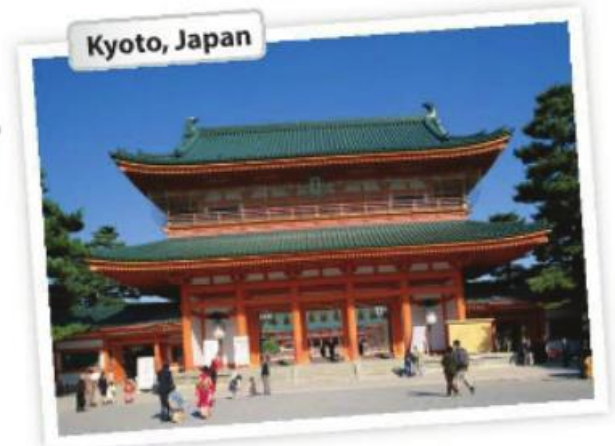
*Nombre de la Licenciatura: Licenciatura en Derecho*

*Cuatrimestre: Primer Cuatrimestre*



**A** Complete the conversations. Then practice with a partner.

- A: Hiroshi, .....<sup>are</sup>..... you and Maiko from Japan?  
 B: Yes, we .....<sup>are</sup>.....  
 A: Oh? .....<sup>are</sup>..... you from Tokyo?  
 B: No, .....<sup>we are</sup>..... not. ....<sup>we're</sup>..... from Kyoto.
- A: .....<sup>Is</sup>..... Laura from the U.S.?  
 B: No, .....<sup>She's</sup>..... not. She's from the U.K.  
 A: .....<sup>Is</sup>..... she from London?  
 B: Yes, she .....<sup>is</sup>..... . But her parents are from Italy. ....<sup>They are</sup>..... not from the U.K. originally.  
 A: .....<sup>Is</sup>..... Laura's first language Italian?  
 B: No, .....<sup>it is</sup>..... not. ....<sup>It's</sup>..... English.
- A: .....<sup>Are</sup>..... Selina and Carlos from Mexico?  
 B: No, .....<sup>they are</sup>..... not. ....<sup>They're</sup>..... from Brazil.  
 A: .....<sup>Are</sup>..... you from Brazil, too?  
 B: No, .....<sup>I am</sup>..... not. I'm from Peru.  
 A: So, .....<sup>is</sup>..... your first language Spanish?  
 B: Yes, it .....<sup>is</sup>..... .



**B** Match the questions with the answers. Then practice with a partner.

- |  |   |
|--|---|
| 1. Are you and your family from Canada? ..... <sup>d</sup> ..... | a. No, he's not. He's from Singapore.   |
| 2. Is your first language English? ..... <sup>c</sup> .....      | b. Yes, she is. She's from California.  |
| 3. Are you Japanese? ..... <sup>e</sup> .....                    | c. No, it's not. It's Japanese.         |
| 4. Is Mr. Ho from Hong Kong? ..... <sup>a</sup> .....            | d. No, we're not. We're from Australia. |
| 5. Is your mother from the U.S.? ..... <sup>b</sup> .....        | e. Yes, we are. We're from Kyoto.       |

**C PAIR WORK** Write five questions like the ones in part B. Then ask and answer your questions with a partner.

## 1 Negative statements and yes/no questions with *be*

- ▶ Use *be* + *not* to form negative statements: Ana **isn't** a student. (NOT: ~~Ana is no a student.~~)
- ▶ *You* is a singular and a plural pronoun: Are **you** from Rio? Yes, **I am**./Yes, **we are**.

### A Unscramble the words to write negative statements.

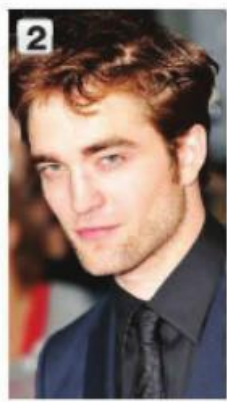
1. in California / not / New York City / is  
New York City is not in California.
2. London / not / from / we're  
we're not from London
3. not / you and Tim / in my class / are  
you and Tim are not in my class
4. is / my first language / Spanish / not  
Spanish is not my first language
5. from / my mother / not / is / Seoul  
my mother is not from Seoul
6. my keys / not / are / they  
they are not my keys

### B Complete the conversations.

1. A: Are you and your family from Mexico?  
B: No, we're not. we are from Guatemala.
2. A: Is your first language English?  
B: Yes, it is. My parents are from Australia.
3. A: Are Kenji and his friend Japanese?  
B: Yes, They are. But they live in the U.S. now.
4. A: Are my mother and I late?  
B: No, you are not. you're early!

## WHERE ARE THEY FROM?

**A** Where are these people from? Check (✓) your guesses.



**Penelope Cruz**

- Mexico
- France
- Spain

**Robert Pattinson**

- the U.S.
- the U.K.
- Canada

**Haru Nomura**

- South Korea
- Japan
- China

**Cate Blanchett**

- Australia
- New Zealand
- South Africa

**Javier Hernández**

- Brazil
- Mexico
- Chile

**B PAIR WORK** Compare your guesses. Then check your answers at the bottom of the page.

A: Is Penelope Cruz from Mexico?

B: No, she's not.

A: Is she from France?

Answers: 1. Spain 2. the U.K. 3. Japan 4. Australia 5. Mexico