

2.2. Where are they from?

WHERE ARE THEY FROM?

A Where are these people from? Check (✓) your guesses.



- Penelope Cruz
- Mexico
 - France
 - Spain



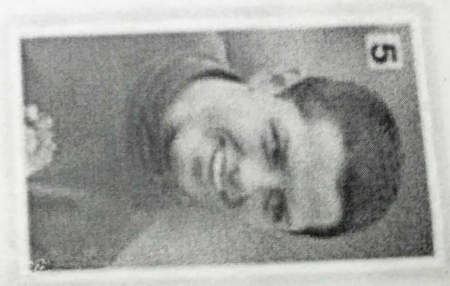
- Robert Pattinson
- the U.S.
 - the U.K.
 - Canada



- Haru Nomura
- South Korea
 - Japan
 - China



- Cate Blanchett
- Australia
 - New Zealand
 - South Africa



- Javier Hernández
- Brazil
 - Mexico
 - Chile

B PAIR WORK Compare your guesses. Then check your answers at the bottom of the page.

- A: Is Penelope Cruz from Mexico?
 B: No, she's not.
 A: Is she from France?

Answers: 1: Spain 2: the U.K. 3: Japan 4: Australia 5: Mexico

CONVERSATION He's cute.

Listen and practice.

- Emma: Who's that?
 Jill: He's my brother.
 Emma: Wow! He's cute. What's his name?
 Jill: James. We call him Jim.
 Emma: Oh, how old is he?
 Jill: He's twenty-one years old.
 Emma: What's he like? Is he nice?
 Jill: Yes, he is - and he's very smart, too!
 Emma: And who's that?
 Jill: My sister, T...



1 Negative statements and yes/no questions with be

- ▶ Use be + not to form negative statements: Ana isn't a student. (not: Ana is no a-student.)
- ▶ You is a singular and a plural pronoun: Are you from Rio? Yes, I am. Yes, we are.

A Unscramble the words to write negative statements.

1. In California / not / New York City / is
New York City is not in California.
2. London / not / from / we're
we're not from London
3. not / you and Tim / in my class / are
NOT are ~~we~~ in my class you and Tim
4. is / my first language / Spanish / not
Spanish is not my first language
5. from / my mother / not / is / Seoul
My mother not is from Seoul
6. my keys / not / are / they
They are not my keys

B Complete the conversations.

1. A: Are you and your family from Mexico?
B: No, ~~are~~ not. My family is from Guatemala.
2. A: Are your first language English?
B: Yes, it is. My parents are you from Australia.
3. A: What are you Kenji and his friend Japanese?
B: Yes, we are. But are you in the U.S. now.
4. A: Are my mother and I late?
B: No, are not. is early!

2.2.- Negative and Questions with be

Negative statements and yes/no questions with be

I'm not from New York.
 You're not late.
 She's not from Russia.
 He's not from Italy.
 It's not English.
 We're not from Japan.
 You're not early.
 They're not in Mexico.
 We're = We are

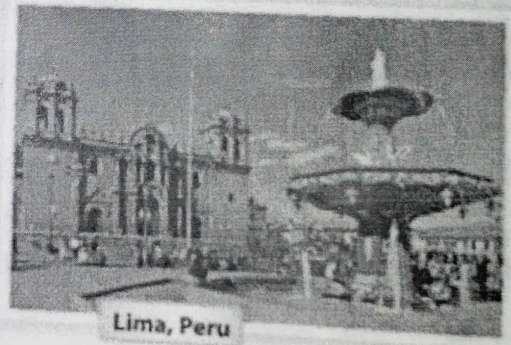
Are you from California?
 Am I early?
 Is she from Brazil?
 Is he from Chile?
 Is it Korean?
 Are you from China?
 Are we late?
 Are they in Canada?

I am.	I'm	not
you are.	you're	not
she is.	she's	not
he is.	he's	not
it is.	it's	not
we are.	we're	not
you are.	you're	not
they are.	they're	not

Yes, No,

A Complete the conversations. Then practice with a partner.

- A: Hiroshi, are you and Maiko from Japan?
 B: Yes, we are.
 A: Oh? Are you from Tokyo?
 B: No, are not. I'm not from Kyoto.
- A: She is Laura from the U.S.?
 B: No, we're not. She's from the U.K.
 A: is she from London?
 B: Yes, she is. But her parents are from Italy. We're not from the U.K. originally.
 A: She is Laura's first language Italian?
 B: No, are not. It's not English.
- A: She is Selina and Carlos from Mexico?
 B: No, are not. I am from Brazil.
 A: Are you from Brazil, too?
 B: No, are not. I'm from Peru.
 A: So, we're your first language Spanish?
 B: Yes, it



B Match the questions with the answers. Then practice with a partner.

- | | |
|--|---|
| 1. Are you and your family from Canada? ...e | a. No, he's not. He's from Singapore. |
| 2. Is your first language English? ...c | b. Yes, she is. She's from California. |
| 3. Are you Japanese? ...e | c. No, it's not. It's Japanese. |
| 4. Is Mr. Ho from Hong Kong? ...a | d. No, we're not. We're from Australia. |
| 5. Is your mother from the U.S.? ...b | e. Yes, we are. We're from Kyoto. |

C PAIR WORK Write five questions like the ones in part B. Then ask and answer your questions with a partner.