



1.

*Name student: Bryseyda Karla Cuvas  
Covarrubias*

2.

*Name teacher: Andrea Berenice Segura  
Leon*

3.

*Matter: English*

4.

*Theme: Negative and questions with be  
Bachelor's degree: Public Accounting and  
Finance*

5.

*Bibliographical sources: Anthology UDS*

2.2.- Negative and Questions with be

Negative statements and yes/no questions with be

I'm <b>not</b> from New York.	Are <b>you</b> from California?	I <b>am</b> .	I'm <b>not</b> .
You're <b>not</b> late.	Am I <b>early</b> ?	<b>you are</b> .	<b>you're not</b> .
She's <b>not</b> from Russia.	Is <b>she</b> from Brazil?	<b>she is</b> .	<b>she's not</b> .
He's <b>not</b> from Italy.	Is <b>he</b> from Chile?	Yes, <b>he is</b> .	No, <b>he's not</b> .
It's <b>not</b> English.	Is <b>it</b> Korean?	<b>it is</b> .	<b>it's not</b> .
We're <b>not</b> from Japan.	Are <b>you</b> from China?	<b>we are</b> .	<b>we're not</b> .
You're <b>not</b> early.	Are <b>we</b> late?	<b>you are</b> .	<b>you're not</b> .
They're <b>not</b> in Mexico.	Are <b>they</b> in Canada?	<b>they are</b> .	<b>they're not</b> .

We're = We are

**A** Complete the conversations. Then practice with a partner.

- A: Hiroshi, are you and Maiko from Japan?  
 B: Yes, we are.  
 A: Oh? are you from Tokyo?  
 B: No, I'm not. I am from Kyoto.
- A: is Laura from the U.S.?  
 B: No, she's not. She's from the U.K.  
 A: is she from London?  
 B: Yes, she is. But her parents are from Italy. she's not from the U.K. originally.  
 A: is Laura's first language Italian?  
 B: No, she's not. is English.
- A: are Selina and Carlos from Mexico?  
 B: No, they're not. are from Brazil.  
 A: are you from Brazil, too?  
 B: No, I'm not. I'm from Peru.  
 A: So, are your first language Spanish?  
 B: Yes, it is.



**B** Match the questions with the answers. Then practice with a partner.

- |  |   |
|--|---|
| 1. Are you and your family from Canada? <u>d</u> | a. No, he's not. He's from Singapore.   |
| 2. Is your first language English? <u>c</u>      | b. Yes, she is. She's from California.  |
| 3. Are you Japanese? <u>e</u>                    | c. No, it's not. It's Japanese.         |
| 4. Is Mr. Ho from Hong Kong? <u>a</u>            | d. No, we're not. We're from Australia. |
| 5. Is your mother from the U.S.? <u>b</u>        | e. Yes, we are. We're from Kyoto.       |

**C PAIR WORK** Write five questions like the ones in part B. Then ask and answer your questions with a partner.



is not

### 1 Negative statements and yes/no questions with be

- ▶ Use *be* + *not* to form negative statements: Ana **isn't** a student. (NOT: ~~Ana is not a student.~~)
- ▶ *You* is a singular and a plural pronoun: Are **you** from Rio? Yes, I am./Yes, **we** are.

#### A Unscramble the words to write negative statements.

1. in California / not / New York City / is  
New York City is not in California.
2. London / not / from / we're  
We're not from London.
3. not / you and Tim / in my class / are  
You and Tim not are in my class.
4. is / my first language / Spanish / not  
My first language not is Spanish.
5. from / my mother / not / is / Seoul  
My mother not is from Seoul.
6. my keys / not / are / they  
My keys are not they.

#### B Complete the conversations.

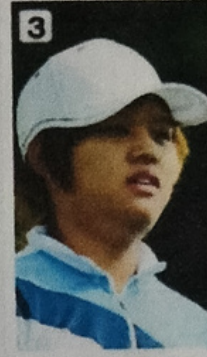
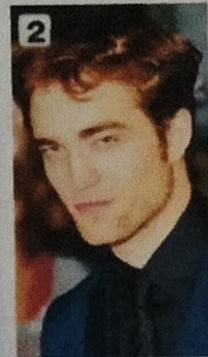
1. A: Are you and your family from Mexico?  
B: No, we're not. are from Guatemala.
2. A: are your first language English?  
B: Yes, it is. My parents are from Australia.
3. A: is Kenji and his friend Japanese?  
B: Yes, they are. But are in the U.S. now.
4. A: are my mother and I late?  
B: No, we're not. are early!



2.2.- Where are they from?

**WHERE ARE THEY FROM?**

**A** Where are these people from? Check (✓) your guesses.



**Penelope Cruz**

- Mexico
- France
- Spain

**Robert Pattinson**

- the U.S.
- the U.K.
- Canada

**Haru Nomura**

- South Korea
- Japan
- China

**Cate Blanchett**

- Australia
- New Zealand
- South Africa

**Javier Hernández**

- Brazil
- Mexico
- Chile

**B PAIRWORK** Compare your guesses. Then check your answers at the bottom of the page.

A: Is Penelope Cruz from Mexico?

B: No, she's not.

A: Is she from France?

not

Answers: 1. Spain 2. the U.K. 3. Japan 4. Australia 5. Mexico

**CONVERSATION** *He's cute.*

🎧 Listen and practice.

Emma: Who's that?

Jill: He's my brother.

Emma: Wow! He's cute. What's his name?

Jill: James. We call him Jim.

Emma: Oh, how old is he?

Jill: He's twenty-one years old.

Emma: What's he like? Is he nice?

Jill: Yes, he is – and he's very smart, too!

Emma: And who's that?

Jill: My sister Tammy. She's only twelve. She's the baby of the family.

