

2.2. - Negative and Questions with be

Negative statements and yes/no questions with be

I'm **not** from New York.
 You're **not** late.
 She's **not** from Russia.
 He's **not** from Italy.
 It's **not** English.
 We're **not** from Japan.
 You're **not** early.
 They're **not** in Mexico.

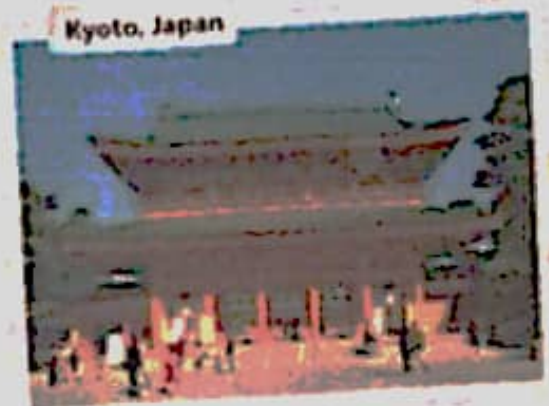
Are you from California?
 Am I early?
 Is she from Brazil?
 Is he from Chile?
 Is it Korean?
 Are you from China?
 Are we late?
 Are they in Canada?

I am	I'm	not
you are	you're	not
she is	she's	not
Yes, he is	No, he's	not
it is	it's	not
we are	we're	not
you are	you're	not
they are	they're	not

We're = We are

A Complete the conversations. Then practice with a partner.

- A: Hiroshi, are you and Maiko from Japan?
 B: Yes, we are from Japan.
 A: Oh? Are you from Tokyo?
 B: No, we're not. We're from Kyoto.
- A: Is Laura from the U.S.?
 B: No, she's not. She's from the U.K.
 A: Is she from London?
 B: Yes, she is. But her parents are from Italy. I'm not from the U.K. originally.
 A: Is Laura's first language Italian?
 B: No, it's not. It's English.
- A: Are Selina and Carlos from Mexico?
 B: No, they're not. They're from Brazil.
 A: Are you from Brazil, too?
 B: No, I'm not. I'm from Peru.
 A: So, is your first language Spanish?
 B: Yes, it is.



B Match the questions with the answers. Then practice with a partner.

- | | | |
|---|----------|---|
| 1. Are you and your family from Canada? | <u>e</u> | a. No, he's not. He's from Singapore. |
| 2. Is your first language English? | <u>c</u> | b. Yes, she is. She's from California. |
| 3. Are you Japanese? | <u>e</u> | c. No, it's not. It's Japanese. |
| 4. Is Mr. Ho from Hong Kong? | <u>a</u> | d. No, we're not. We're from Australia. |
| 5. Is your mother from the U.S.? | <u>b</u> | e. Yes, we are. We're from Kyoto. |

C PAIR WORK Write five questions like the ones in part B. Then ask and answer your questions with a partner.

1 Negative statements and yes/no questions with be

- ▶ Use *be + not* to form negative statements: Ana isn't a student. (not: Ana is no-a student.)
- ▶ *You* is a singular and a plural pronoun: Are you from Rio? Yes, I am./Yes, we are.

A Unscramble the words to write negative statements.

1. in California / not / New York City / is
New York City is not in California
2. London / not / from / we're
We're not from London
3. not / you and Tim / in my class / are
Are you and Tim not in my class
4. is / my first language / Spanish / not
My first language not is Spanish
5. from / my mother / not / is / Seoul
My mother is not from Seoul
6. my keys / not / are / they
They are not my keys

B Complete the conversations.

1. A: Are you and your family from Mexico?
B: No, They're not. They're from Guatemala.
2. A: Is your first language English?
B: Yes, it is. My parents are from Australia.
3. A: Are Kenji and his friend Japanese?
B: Yes, They are. But they're in the U.S. now.
4. A: Is my mother and I late?
B: No, she is not. She's early!

2.2.- Where are they from?

WHERE ARE THEY FROM?

A Where are these people from? Check (✓) your guesses.



Penelope Cruz

- Mexico
- France
- Spain

Robert Pattinson

- the U.S.
- the U.K.
- Canada

Haru Nomura

- South Korea
- Japan
- China

Cate Blanchett

- Australia
- New Zealand
- South Africa

Javier Hernández

- Brazil
- Mexico
- Chile

B PAIRWORK Compare your guesses. Then check your answers at the bottom of the page.

A: Is Penelope Cruz from Mexico?

B: No, she's not.

A: Is she from France?

Answers: 1 Spain 2 the U.K. 3 Japan 4 Australia 5 Mexico

CONVERSATION He's cute.

🎧 Listen and practice.

Emma: Who's that?

Jill: He's my brother.

Emma: Wow! He's cute. What's his name?

Jill: James. We call him Jim.

Emma: Oh, how old is he?

Jill: He's twenty one years old.

Emma: What's he like? Is he nice?

Jill: Yes, he is - and he's very smart, too!

Emma: And who's that?

Jill: My sister Tammy. She's only twelve. She's the baby of the family.

