



Name: Ana karen Francisco pascual

**Licenciatura en administración y
estrategias de negocios**

1er cuatrimestre

Teacher: Andrea Segura León

Noviembre 2022

2.2.- Negative and Questions with be

Negative statements and yes/no questions with be

I'm **not** from New York.
 You're **not** late.
 She's **not** from Russia.
 He's **not** from Italy.
 It's **not** English.
 We're **not** from Japan.
 You're **not** early.
 They're **not** in Mexico.

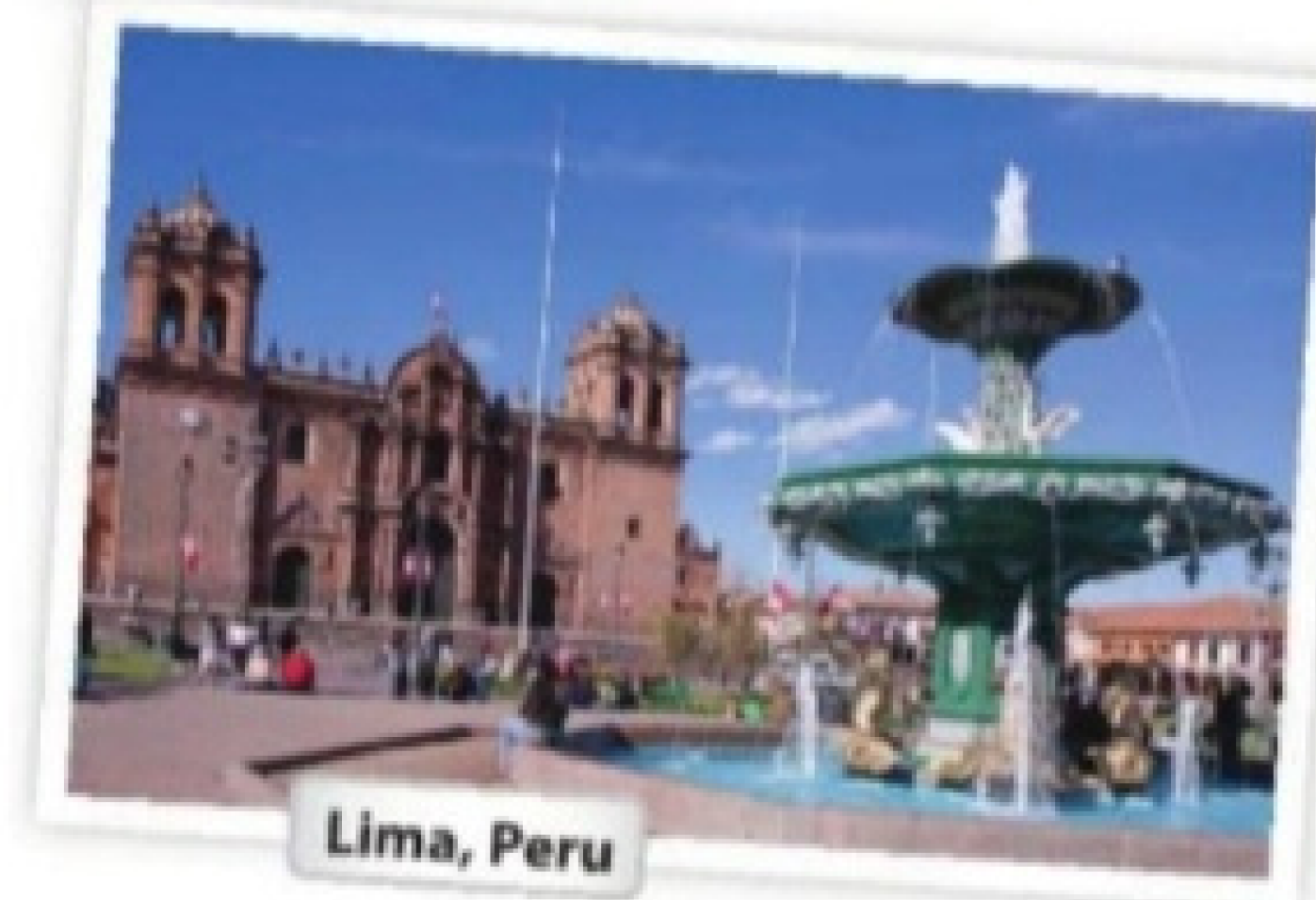
We're = We are

Are **you** from California?
 Am **I** early?
 Is **she** from Brazil?
 Is **he** from Chile?
 Is **it** Korean?
 Are **you** from China?
 Are **we** late?
 Are **they** in Canada?

	I am.		I'm	not.
	you are.		you're	not.
	she is.		she's	not.
Yes,	he is.	No,	he's	not.
	it is.		it's	not.
	we are.		we're	not.
	you are.		you're	not.
	they are.		they're	not.

A Complete the conversations. Then practice with a partner.

- A: Hiroshi, you and Maiko from Japan?
 B: Yes, we **Are**
 A: Oh? **Are** you from Tokyo?
 B: No, not. **I'm** from Kyoto.
- A: Laura from the U.S.?
 B: No, **She is** not. She's from the U.K.
 A: she from London?
 B: Yes, she **is** But her parents are from Italy. **They're** not from the U.K. originally.
 A: Laura's first language Italian?
 B: No, **is** not. **It's** English.
- A: Selina and Carlos from Mexico?
 B: No, **Are** not. **They're** from Brazil.
 A: you from Brazil, too?
 B: No, **I am** not. I'm from Peru.
 A: So, your first language Spanish?
 B: Yes, it **is**



B Match the questions with the answers. Then practice with a partner.

- | | |
|---|--|
| 1. Are you and your family from Canada?
2. Is your first language English?
3. Are you Japanese?
4. Is Mr. Ho from Hong Kong?
5. Is your mother from the U.S.? | a. No, he's not. He's from Singapore.
b. Yes, she is. She's from California.
c. No, it's not. It's Japanese.
d. No, we're not. We're from Australia.
e. Yes, we are. We're from Kyoto. |
|---|--|

C PAIR WORK Write five questions like the ones in part B. Then ask and answer your questions with a partner.

1 Negative statements and yes/no questions with be

- ▶ Use *be* + *not* to form negative statements: Ana **isn't** a student. (NOT: ~~Ana is no a student.~~)
- ▶ *You* is a singular and a plural pronoun: Are **you** from Rio? Yes, I am./Yes, **we** are.

A Unscramble the words to write negative statements.

1. in California / not / New York City / is
 New York City is not in California.
2. London / not / from / we're
We're not from London
3. not / you and Tim / in my class / are
You and Tim are not in my class
4. is / my first language / Spanish / not
My first language is not Spanish
5. from / my mother / not / is / Seoul
My mother is not from Seoul
6. my keys / not / are / they
They are not my keys

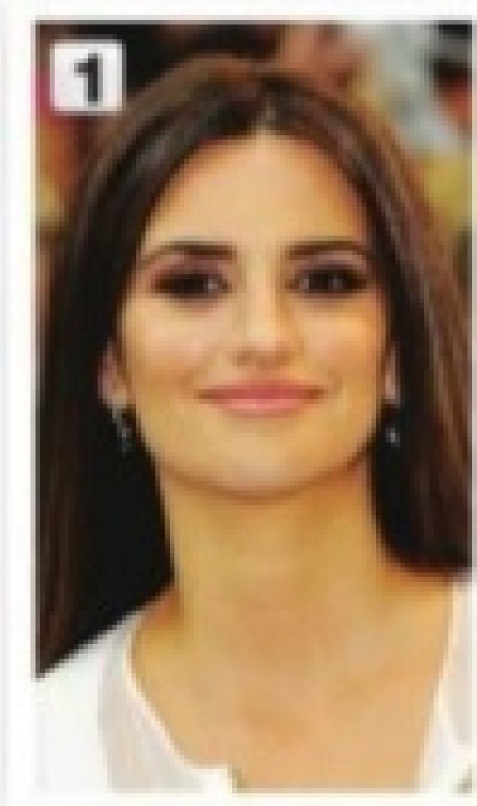
B Complete the conversations.

1. A: **Are** you and your family from Mexico?
 B: No, **We are** not. **We're** from Guatemala.
2. A: **It is** your first language English?
 B: Yes, it **is** My parents **Are** from Australia.
3. A: **Is** Kenji and his friend Japanese?
 B: Yes, **They** are. But **They're** in the U.S. now.
4. A: **Are** my mother and I late?
 B: No, **You're** not. **You are** early!

2.2.- Where are they from?

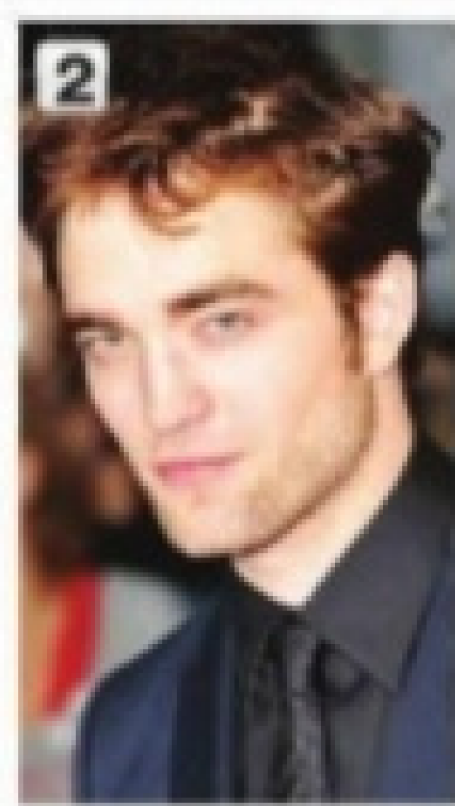
WHERE ARE THEY FROM?

A Where are these people from? Check (✓) your guesses.



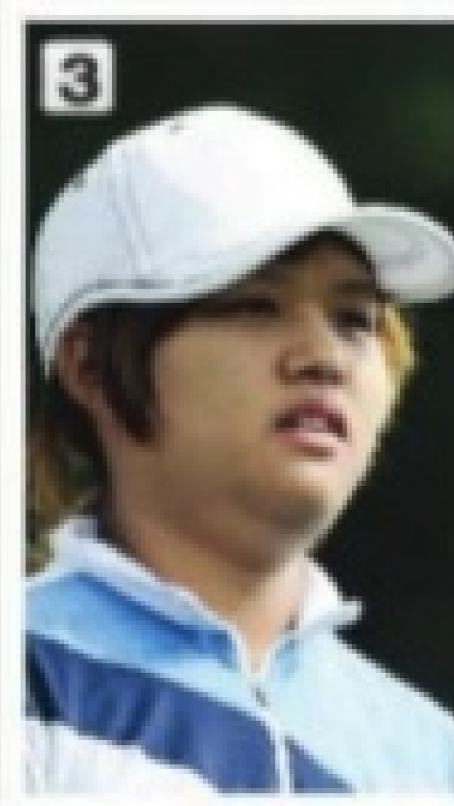
Penelope Cruz

- Mexico
 France
 Spain



Robert Pattinson

- the U.S.
 the U.K.
 Canada



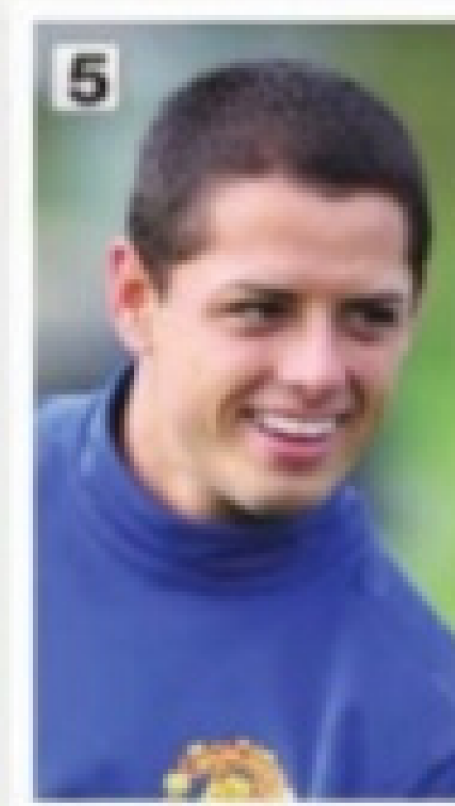
Haru Nomura

- South Korea
 Japan
 China



Cate Blanchett

- Australia
 New Zealand
 South Africa



Javier Hernández

- Brazil
 Mexico
 Chile

B PAIR WORK Compare your guesses. Then check your answers at the bottom of the page.

A: Is Penelope Cruz from Mexico?

B: No, she's not.

A: Is she from France?

Answers: 1. Spain 2. the U.K. 3. Japan 4. Australia 5. Mexico

CONVERSATION *He's cute.*

🎧 Listen and practice.

Emma: Who's that?

Jill: He's my brother.

Emma: Wow! He's cute. What's his name?

Jill: James. We call him Jim.

Emma: Oh, how old is he?

Jill: He's twenty-one years old.

Emma: What's he like? Is he nice?

Jill: Yes, he is – and he's very smart, too!

Emma: And who's that?

Jill: My sister Tammy. She's only twelve. She's the baby of the family.

