



# INGLÉS

**NORMA DANIELA VILLATORO  
MONZÓN**

## 2.2.- Negative and Questions with be

### Negative statements and yes/no questions with be

I'm **not** from New York.  
 You're **not** late.  
 She's **not** from Russia.  
 He's **not** from Italy.  
 It's **not** English.  
 We're **not** from Japan.  
 You're **not** early.  
 They're **not** in Mexico.

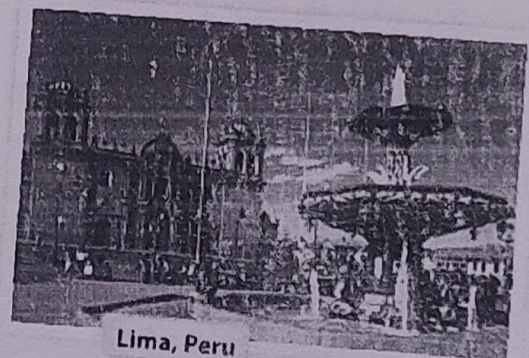
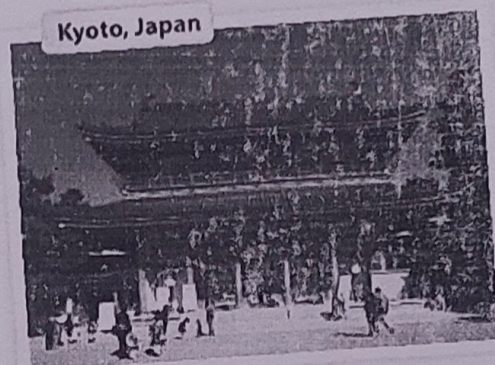
We're = We are

Are **you** from California?  
 Am **I** early?  
 Is **she** from Brazil?  
 Is **he** from Chile?  
 Is **it** Korean?  
 Are **you** from China?  
 Are **we** late?  
 Are **they** in Canada?

I <b>am</b> .	I'm <b>not</b> .
<b>you are</b> .	<b>you're not</b> .
<b>she is</b> .	<b>she's not</b> .
Yes, <b>he is</b> .	No, <b>he's not</b> .
<b>it is</b> .	<b>it's not</b> .
<b>we are</b> .	<b>we're not</b> .
<b>you are</b> .	<b>you're not</b> .
<b>they are</b> .	<b>they're not</b> .

on **A** Complete the conversations. Then practice with a partner.

- A: Hiroshi, are you and Maiko from Japan?  
 B: Yes, we are.  
 A: Oh? are you from Tokyo?  
 B: No, I'm not. I am from Kyoto.
- A: is Laura from the U.S.?  
 B: No, she's not. She's from the U.K.  
 A: is she from London?  
 B: Yes, she is. But her parents are from Italy. she's not from the U.K. originally.  
 A: is Laura's first language Italian?  
 B: No, she's not. is English.
- A: are Selina and Carlos from Mexico?  
 B: No, they're not. they are from Brazil.  
 A: are you from Brazil, too?  
 B: No, I'm not. I'm from Peru.  
 A: So, is your first language Spanish?  
 B: Yes, it is.



on **B** Match the questions with the answers. Then practice with a partner.

- |                                                  |                                         |
|--------------------------------------------------|-----------------------------------------|
| 1. Are you and your family from Canada? <u>d</u> | a. No, he's not. He's from Singapore.   |
| 2. Is your first language English? <u>c</u>      | b. Yes, she is. She's from California.  |
| 3. Are you Japanese? <u>e</u>                    | c. No, it's not. It's Japanese.         |
| 4. Is Mr. Ho from Hong Kong? <u>a</u>            | d. No, we're not. We're from Australia. |
| 5. Is your mother from the U.S.? <u>b</u>        | e. Yes, we are. We're from Kyoto.       |

**PAIR WORK** Write five questions like the ones in part B. Then ask and answer your questions with a partner.

## 1 Negative statements and yes/no questions with *be*

- ▶ Use *be* + *not* to form negative statements: Ana **isn't** a student. (NOT: ~~Ana is no~~ a student.)
- ▶ *You* is a singular and a plural pronoun: Are **you** from Rio? Yes, I am./Yes, **we** are.

### A Unscramble the words to write negative statements.

1. in California / not / New York City / is  
New York City is not in California.
2. London / not / from / we're  
We're not from London.
3. not / you and Tim / in my class / are  
you and Tim are not in my class.
4. is / my first language / Spanish / not  
my first language is not Spanish.
5. from / my mother / not / is / Seoul  
my mother is not from Seoul.
6. my keys / not / are / they  
They're not my keys.

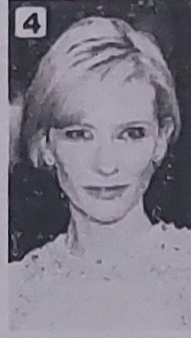
### B Complete the conversations.

1. A: Are you and your family from Mexico?  
B: No, we are not. We are from Guatemala.
2. A: Is it your first language English?  
B: Yes, it is. My parents are from Australia.
3. A: are they Kenji and his friend Japanese?  
B: Yes, they are. But they are in the U.S. now.
4. A: are we arriving y mother and I late?  
B: No, you are not. you are arriving early!

2.2.- Where are they from?

**WHERE ARE THEY FROM?**

A Where are these people from? Check (✓) your guesses.



**Penelope Cruz**

- Mexico
- France
- Spain

**Robert Pattinson**

- the U.S.
- the U.K.
- Canada

**Haru Nomura**

- South Korea
- Japan
- China

**Cate Blanchett**

- Australia
- New Zealand
- South Africa

**Javier Hernández**

- Brazil
- Mexico
- Chile

B PAIR WORK Compare your guesses. Then check your answers at the bottom of the page.

A: Is Penelope Cruz from Mexico?

B: No, she's not.

A: Is she from France?

Answers: 1. Spain 2. the U.K. 3. Japan 4. Australia 5. Mexico

**CONVERSATION** *He's cute.*

Listen and practice.

Emma: Who's that?

Jill: He's my brother.

Emma: Wow! He's cute. What's his name?

Jill: James. We call him Jim.

Emma: Oh, how old is he?

Jill: He's twenty-one years old.

Emma: What's he like? Is he nice?

Jill: Yes, he is - and he's very smart, too!

Emma: And who's that?

Jill: My sister Tammy. She's only twelve. She's the baby of the family.

