

INGLES
UNIDAD II

María Daniela Gordillo Pinto



2.2.- Negative and Questions with be

Negative statements and yes/no questions with be

I'm **not** from New York.
 You're **not** late.
 She's **not** from Russia.
 He's **not** from Italy.
 It's **not** English.
 We're **not** from Japan.
 You're **not** early.
 They're **not** in Mexico.

We're = We are

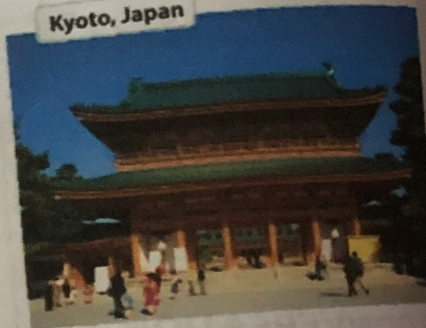
Are you from California?
 Am I early?
 Is she from Brazil?
 Is he from Chile?
 Is it Korean?
 Are you from China?
 Are we late?
 Are they in Canada?

	I am.	I'm	not
	you are.	you're	not
	she is.	she's	not
Yes,	he is.	he's	not
	it is.	it's	not
	we are.	we're	not
	you are.	you're	not
	they are.	they're	not

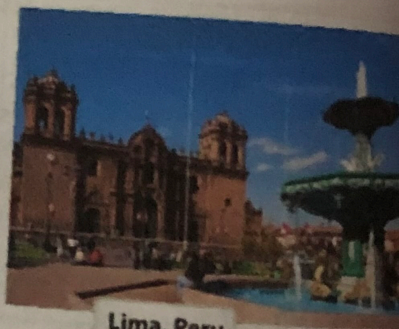
A Complete the conversations. Then practice with a partner.

- A: Hiroshi, are you and Maiko from Japan?
 B: Yes, we are.
 A: Oh? Are you from Tokyo?
 B: No, I'm not. I'm from Kyoto.
- A: Is Laura from the U.S.?
 B: No, she's not. She's from the U.K.
 A: Is she from London?
 B: Yes, she is. But her parents are from Italy. She's not from the U.K. originally.
 A: Is Laura's first language Italian?
 B: No, it's not. It's English.
- A: Are Selina and Carlos from Mexico?
 B: No, they're not. They're from Brazil.
 A: Are you from Brazil, too?
 B: No, I'm not. I'm from Peru.
 A: So, is your first language Spanish?
 B: Yes, it is.

Kyoto, Japan



Lima, Peru



B Match the questions with the answers. Then practice with a partner.

- | | |
|--------------------------------------------------|-----------------------------------------|
| 1. Are you and your family from Canada? <u>d</u> | a. No, he's not. He's from Singapore. |
| 2. Is your first language English? <u>c</u> | b. Yes, she is. She's from California. |
| 3. Are you Japanese? <u>e</u> | c. No, it's not. It's Japanese. |
| 4. Is Mr. Ho from Hong Kong? <u>a</u> | d. No, we're not. We're from Australia. |
| 5. Is your mother from the U.S.? <u>b</u> | e. Yes, we are. We're from Kyoto. |

C PAIR WORK Write five questions like the ones in part B. Then ask and answer your questions with a partner.

1 Negative statements and yes/no questions with be

- ▶ Use **be + not** to form negative statements: Ana **isn't** a student. (NOT: Ana is no a student.)
- ▶ You is a singular and a plural pronoun: Are **you** from Rio? Yes, **I am**. / Yes, **we are**.

A Unscramble the words to write negative statements.

- in California / not / New York City / is
New York City is not in California.
- London / not / from / we're
We're not from London
- not / you and Tim / in my class / are
You and Tim aren't in my class.
- is / my first language / Spanish / not
My first language isn't Spanish.
- from / my mother / not / is / Seoul
My mother isn't from Seoul
- my keys / not / are / they
They are not my keys.

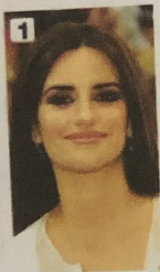
B Complete the conversations.

- A: Are you and your family from Mexico?
B: No, we're not. We are from Guatemala.
- A: Is your first language English?
B: Yes, it is. My parents are from Australia.
- A: Are Kenji and his friend Japanese?
B: Yes, they are. But they live in the U.S. now.
- A: Are my mother and I late?
B: No, we're not. It's early!

2.2.- Where are they from?

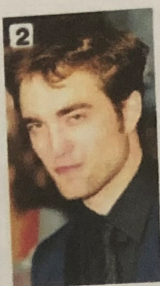
WHERE ARE THEY FROM?

A Where are these people from? Check (✓) your guesses.



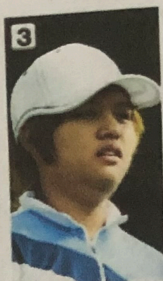
Penelope Cruz

- Mexico
- France
- Spain



Robert Pattinson

- the U.S.
- the U.K.
- Canada



Haru Nomura

- South Korea
- Japan
- China



Cate Blanchett

- Australia
- New Zealand
- South Africa



Javier Hernández

- Brazil
- Mexico
- Chile

B PAIR WORK Compare your guesses. Then check your answers at the bottom of the page.

A: Is Penelope Cruz from Mexico?

B: No, she's not.

A: Is she from France?

Answers: 1. Spain 2. the U.K. 3. Japan 4. Australia 5. Mexico

CONVERSATION *He's cute.*

🎧 Listen and practice.

Emma: Who's that?

Jill: He's my brother.

Emma: Wow! He's cute. What's his name?

Jill: James. We call him Jim.

Emma: Oh, how old is he?

Jill: He's twenty-one years old.

Emma: What's he like? Is he nice?

Jill: Yes, he is – and he's very smart, too!

Emma: And who's that?

Jill: My sister Tammy. She's only twelve. She's the baby of the family.

