

2.2.- Negative and Questions with be

Negative statements and yes/no questions with be

I'm not from New York.  
 You're not late.  
 She's not from Russia.  
 He's not from Italy.  
 It's not English.  
 We're not from Japan.  
 You're not early.  
 They're not in Mexico.

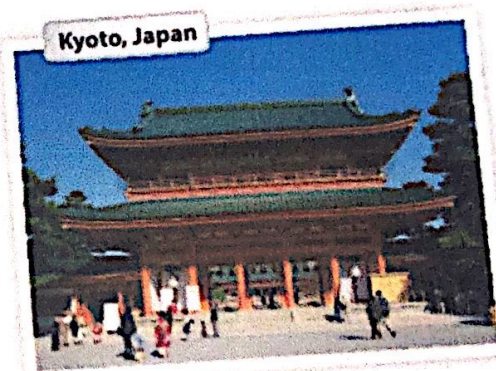
We're = We are

Are you from California?  
 Am I early?  
 Is she from Brazil?  
 Is he from Chile?  
 Is it Korean?  
 Are you from China?  
 Are we late?  
 Are they in Canada?

I am.	I'm	not.
you are	you're	not.
she is.	she's	not.
Yes, he is.	No, he's	not.
it is.	it's	not.
we are.	we're	not.
you are.	you're	not.
they are.	they're	not.

**A** Complete the conversations. Then practice with a partner.

- A: Hiroshi, are you and Maiko from Japan?  
 B: Yes, we are from Japan  
 A: Oh? are you from Tokyo?  
 B: No, we are not. We are from Kyoto.
- A: are you Laura from the U.S.?  
 B: No, I am not. She's from the U.K.  
 A: is she from London?  
 B: Yes, she is. But her parents are from Italy. I am not from the U.K. originally.  
 A: she is Laura's first language Italian?  
 B: No, speak not. speak English.
- A: are the Selina and Carlos from Mexico?  
 B: No, they are not. are the from Brazil.  
 A: are you from Brazil, too?  
 B: No, am not. I'm from Peru.  
 A: So, speak your first language Spanish?  
 B: Yes, it is.



**B** Match the questions with the answers. Then practice with a partner.

- |  |   |
|--|---|
| 1. Are you and your family from Canada? <u>d</u> | a. No, he's not. He's from Singapore.   |
| 2. Is your first language English? <u>c</u>      | b. Yes, she is. She's from California.  |
| 3. Are you Japanese? <u>e</u>                    | c. No, it's not. It's Japanese.         |
| 4. Is Mr. Ho from Hong Kong? <u>a</u>            | d. No, we're not. We're from Australia. |
| 5. Is your mother from the U.S.? <u>b</u>        | e. Yes, we are. We're from Kyoto.       |

**C PAIRWORK** Write five questions like the ones in part B. Then ask and answer your questions with a partner.



**1 Negative statements and yes/no questions with be**

- ▶ Use *be* + *not* to form negative statements: Ana **Isn't** a student. (NOT: Ana ~~is not~~ a student.)
- ▶ *You* is a singular and a plural pronoun: Are **you** from Rio? Yes, I am./Yes, we are.

**A** Unscramble the words to write negative statements.

1. in California / not / New York City / is  
New York City is not in California.
2. London / not / from / we're  
we're from not London
3. not / you and Tim / in my class / are  
you and tim are not in my class
4. is / my first language / Spanish / not  
my first language not is Spanish
5. from / my mother / not / is / Seoul  
my mother not is from Seoul
6. my keys / not / are / they  
my keys are not they

**B** Complete the conversations.

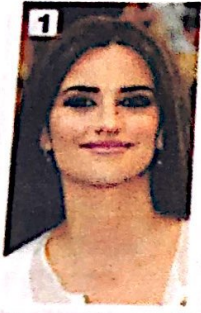
1. A: ..... Are ..... you and your family from Mexico?  
B: No, we are not. we are ..... from Guatemala.
2. A: ..... Is ..... your first language English?  
B: Yes, it is. My parents ..... are ..... from Australia.
3. A: ..... are ..... Kenji and his friend Japanese?  
B: Yes, They are. But ..... They are ..... in the U.S. now.
4. A: ..... are ..... my mother and I late?  
B: No, they are not. we arrived early!  
They are not late



2.2.- Where are they from?

**WHERE ARE THEY FROM?**

**A** Where are these people from? Check (✓) your guesses.



**Penelope Cruz**

- Mexico
- France
- Spain

**Robert Pattinson**

- the U.S.
- the U.K.
- Canada

**Haru Nomura**

- South Korea
- Japan
- China

**Cate Blanchett**

- Australia
- New Zealand
- South Africa

**Javier Hernández**

- Brazil
- Mexico
- Chile

**B PAIRWORK** Compare your guesses. Then check your answers at the bottom of the page.

A: Is Penelope Cruz from Mexico?

B: No, she's not.

A: Is she from France?

Answers: 1. Spain 2. the U.K. 3. Japan 4. Australia 5. Mexico

**CONVERSATION** *He's cute.*

🎧 Listen and practice.

Emma: Who's that?

Jill: He's my brother.

Emma: Wow! He's cute. What's his name?

Jill: James. We call him Jim.

Emma: Oh, how old is he?

Jill: He's twenty-one years old.

Emma: What's he like? Is he nice?

Jill: Yes, he is - and he's very smart, too!

Emma: And who's that?

Jill: My sister Tammy. She's only twelve. She's the baby of the family.

