

Jazmin Bernabé Galicia

2.2.- Negative and Questions with be

Negative statements and yes/no questions with be

I'm **not** from New York.
 You're **not** late.
 She's **not** from Russia.
 He's **not** from Italy.
 It's **not** English.
 We're **not** from Japan.
 You're **not** early.
 They're **not** in Mexico.

We're = We are

Are you from California?
 Am I early?
 Is she from Brazil?
 Is he from Chile?
 Is it Korean?
 Are you from China?
 Are we late?
 Are they in Canada?

I am.	I'm	not
you are	you're	not
she is	she's	not
he is	he's	not
it is	it's	not
we are.	we're	not
you are	you're	not
they are.	they're	not

A Complete the conversations. Then practice with a partner.

- A: Hiroshi, are you and Maiko from Japan?
 B: Yes, we are.
 A: Oh? are you from Tokyo?
 B: No, I'm not. I'm from Kyoto.
- A: Is Laura from the U.S.?
 B: No, she's not. She's from the U.K.
 A: Is she from London?
 B: Yes, she is. But her parents are from Italy. they are not from the U.K. originally.
 A: Is Laura's first language Italian?
 B: No, its not. its English.
- A: are Selina and Carlos from Mexico?
 B: No, they are not. they are from Brazil.
 A: are you from Brazil, too?
 B: No, I'm not. I'm from Peru.
 A: So, is your first language Spanish?
 B: Yes, it is.



B Match the questions with the answers. Then practice with a partner.

- | | |
|--|---|
| 1. Are you and your family from Canada? <u>d</u> | a. No, he's not. He's from Singapore. |
| 2. Is your first language English? <u>c</u> | b. Yes, she is. She's from California. |
| 3. Are you Japanese? <u>e</u> | c. No, it's not. It's Japanese. |
| 4. Is Mr. Ho from Hong Kong? <u>a</u> | d. No, we're not. We're from Australia. |
| 5. Is your mother from the U.S.? <u>b</u> | e. Yes, we are. We're from Kyoto. |

C PAIRWORK Write five questions like the ones in part B. Then ask and answer your questions with a partner.

1 Negative statements and yes/no questions with be

- ▶ Use *be* + *not* to form negative statements: Ana **isn't** a student. (NOT: Ana is no a student.)
- ▶ *You* is a singular and a plural pronoun: Are **you** from Rio? Yes, I am./Yes, **we** are.

A Unscramble the words to write negative statements.

- in California / not / New York City / is
New York City is not in California.
- London / not / from / we're
We're not from London.
- not / you and Tim / in my class / are
you and Tim are not in my class
- is / my first language / Spanish / not
Spanish is not my first language
- from / my mother / not / is / Seoul
my mother is not from Seoul
- my keys / not / are / they
They are not my keys

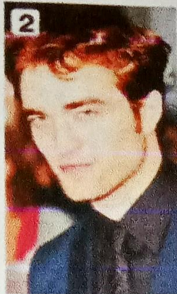
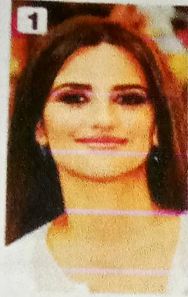
B Complete the conversations.

- A: Are you and your family from Mexico?
B: No, we're not. We're from Guatemala.
- A: Is your first language English?
B: Yes, it is. My parents are from Australia.
- A: are Kenji and his friend Japanese?
B: Yes, they are. But They Live in the U.S. now.
- A: are my mother and I late?
B: No, we are not. we are early!

2.2.- Where are they from?

WHERE ARE THEY FROM?

A Where are these people from? Check (✓) your guesses.



Penelope Cruz

- Mexico
- France
- Spain

Robert Pattinson

- the U.S.
- the U.K.
- Canada

Haru Nomura

- South Korea
- Japan
- China

Cate Blanchett

- Australia
- New Zealand
- South Africa

Javier Hernández

- Brazil
- Mexico
- Chile

B PAIR WORK Compare your guesses. Then check your answers at the bottom of the page.

A: Is Penelope Cruz from Mexico?

B: No, she's not.

A: Is she from France?

Answers: 1. Spain 2. the U.K. 3. Japan 4. Australia 5. Mexico

CONVERSATION He's cute.

🎧 Listen and practice.

Emma: Who's that?

Jill: He's my brother.

Emma: Wow! He's cute. What's his name?

Jill: James. We call him Jim.

Emma: Oh, how old is he?

Jill: He's twenty-one years old.

Emma: What's he like? Is he nice?

Jill: Yes, he is – and he's very smart, too!

Emma: And who's that?

Jill: My sister Tammy. She's only twelve. She's the baby of the family.

