

# INGLES

## Unidad II

Nombre: Miguel Ángel Espinosa Sandoval





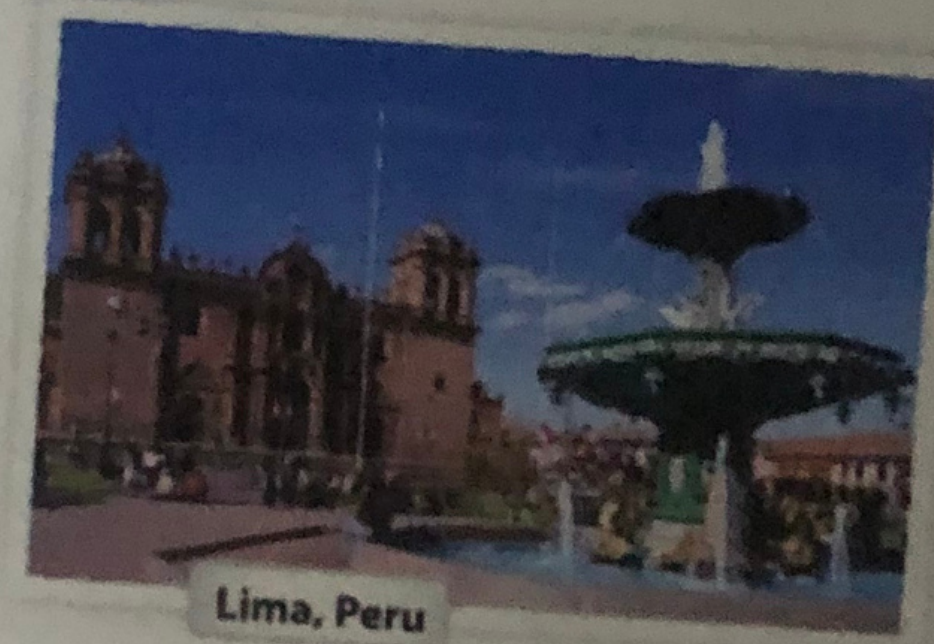
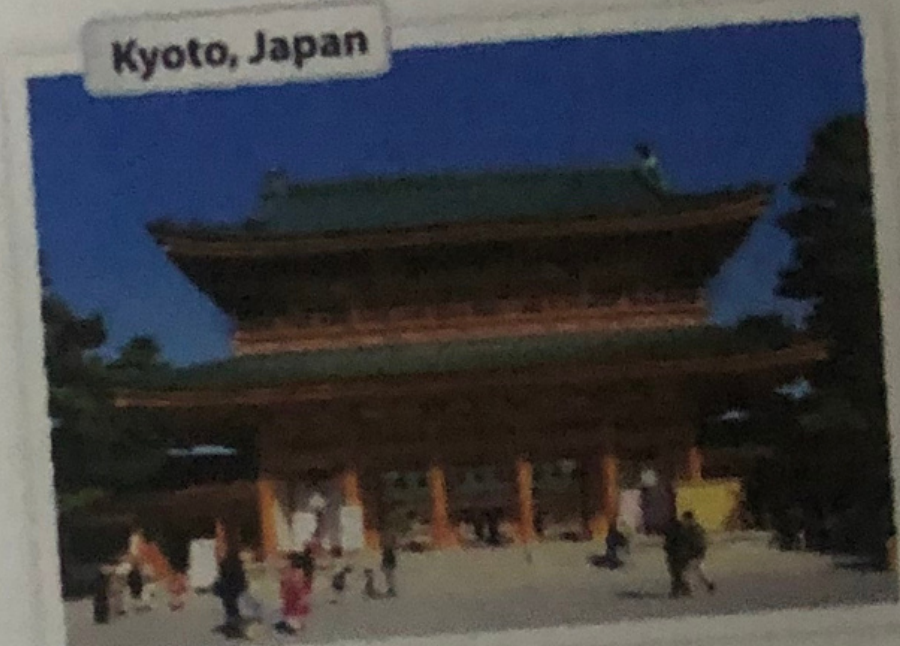
## 2.2.- Negative and Questions with be

### Negative statements and yes/no questions with be

I'm <b>not</b> from New York.	<b>Are you</b> from California?	I <b>am</b> .	I'm <b>not</b> .
You're <b>not</b> late.	<b>Am I</b> early?	<b>you are</b> .	you're <b>not</b> .
She's <b>not</b> from Russia.	<b>Is she</b> from Brazil?	<b>she is</b> .	she's <b>not</b> .
He's <b>not</b> from Italy.	<b>Is he</b> from Chile?	Yes, <b>he is</b> .	No, <b>he's not</b> .
It's <b>not</b> English.	<b>Is it</b> Korean?	<b>it is</b> .	<b>it's not</b> .
We're <b>not</b> from Japan.	<b>Are you</b> from China?	<b>we are</b> .	we're <b>not</b> .
You're <b>not</b> early.	<b>Are we</b> late?	<b>you are</b> .	you're <b>not</b> .
They're <b>not</b> in Mexico.	<b>Are they</b> in Canada?	<b>they are</b> .	they're <b>not</b> .
We're = We are			

**A** Complete the conversations. Then practice with a partner.

- A: Hiroshi, are you and Maiko from Japan?  
 B: Yes, we are.  
 A: Oh? are you from Tokyo?  
 B: No, I'm not. I'm from Kyoto.
- A: Is Laura from the U.S.?  
 B: No, she's not. She's from the U.K.  
 A: Is she from London?  
 B: Yes, she is. But her parents are from Italy. They are not from the U.K. originally.  
 A: Is Laura's first language Italian?  
 B: No, it's not. It's English.
- A: are Selina and Carlos from Mexico?  
 B: No, they are not. They're from Brazil.  
 A: are you from Brazil, too?  
 B: No, I'm not. I'm from Peru.  
 A: So, is your first language Spanish?  
 B: Yes, it is.



**B** Match the questions with the answers. Then practice with a partner.

- |  |   |
|--|---|
| 1. Are you and your family from Canada? <u>d</u> | a. No, he's not. He's from Singapore.   |
| 2. Is your first language English? <u>c</u>      | b. Yes, she is. She's from California.  |
| 3. Are you Japanese? <u>e</u>                    | c. No, it's not. It's Japanese.         |
| 4. Is Mr. Ho from Hong Kong? <u>a</u>            | d. No, we're not. We're from Australia. |
| 5. Is your mother from the U.S.? <u>b</u>        | e. Yes, we are. We're from Kyoto.       |

**C PAIRWORK** Write five questions like the ones in part B. Then ask and answer your questions with a partner.



### 1 Negative statements and yes/no questions with be

- ▶ Use *be* + *not* to form negative statements: Ana **isn't** a student. (NOT: ~~Ana is no a student.~~)
- ▶ You is a singular and a plural pronoun: Are **you** from Rio? Yes, I am./Yes, **we** are.

#### A Unscramble the words to write negative statements.

1. in California / not / New York City / is  
New York City is not in California.
2. London / not / from / we're  
we're not from London
3. not / you and Tim / in my class / are  
you and tim are not in my class
4. is / my first language / Spanish / not  
Spanish is not my first
5. from / my mother / not / is / Seoul  
my mother is not from Seoul
6. my keys / not / are / they  
they are not my keys

#### B Complete the conversations.

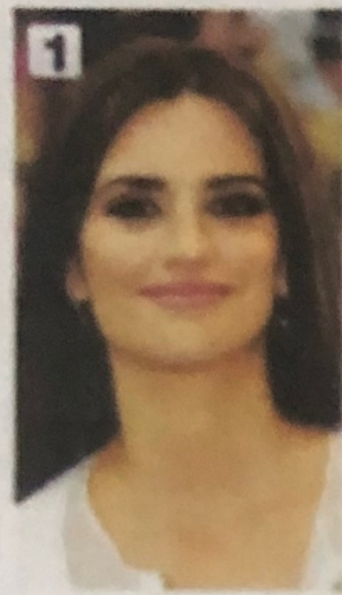
1. A: Are you and your family from Mexico?  
B: No, we're not. we're from Guatemala.
2. A: Is your first language English?  
B: Yes, it is. My parents are from Australia.
3. A: are Kenji and his friend Japanese?  
B: Yes, they are. But they in the U.S. now.
4. A: are my mother and I late?  
B: No, we are not. we are early!



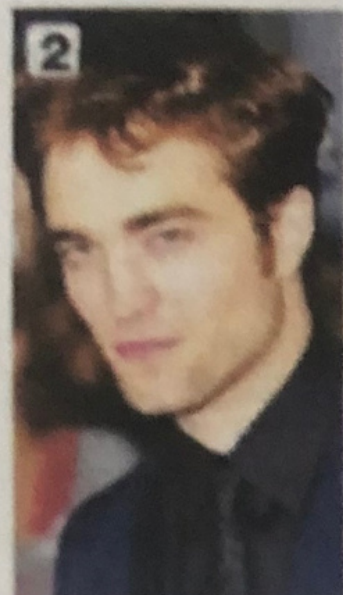
2.2.- Where are they from?

**WHERE ARE THEY FROM?**

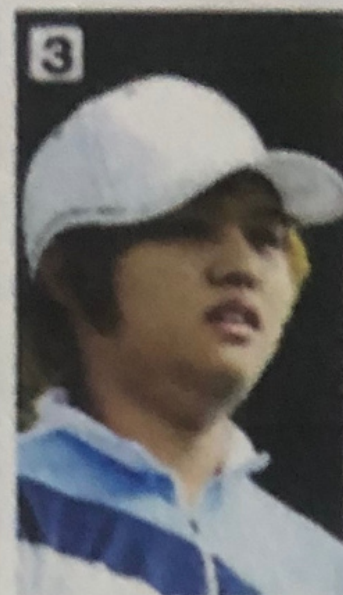
**A** Where are these people from? Check (✓) your guesses.



- Penelope Cruz**
- Mexico
  - France
  - Spain



- Robert Pattinson**
- the U.S.
  - the U.K.
  - Canada



- Haru Nomura**
- South Korea
  - Japan
  - China



- Cate Blanchett**
- Australia
  - New Zealand
  - South Africa



- Javier Hernández**
- Brazil
  - Mexico
  - Chile

**B PAIRWORK** Compare your guesses. Then check your answers at the bottom of the page.

A: Is Penelope Cruz from Mexico?  
 B: No, she's not.  
 A: Is she from France?

Answers: 1. Spain 2. the U.K. 3. Japan 4. Australia 5. Mexico

**CONVERSATION** *He's cute.*

🎧 Listen and practice.

Emma: Who's that?  
 Jill: He's my brother.  
 Emma: Wow! He's cute. What's his name?  
 Jill: James. We call him Jim.  
 Emma: Oh, how old is he?  
 Jill: He's twenty-one years old.  
 Emma: What's he like? Is he nice?  
 Jill: Yes, he is - and he's very smart, too!  
 Emma: And who's that?  
 Jill: My sister Tammy. She's only twelve. She's the baby of the family.

