



Student's name: Cristal Alejandra Hernández Roblero

Teacher name: Andrea Berenice Segura León

Name of the job: English Activities

Matter: English

Degree: First

Cluster: A

Comitán of Domínguez Chiapas (September 24, 2022)

## 2.2.- Negative and Questions with be

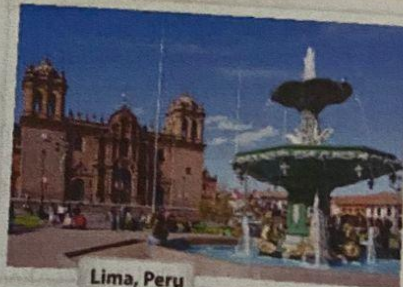
### Negative statements and yes/no questions with be

I'm <b>not</b> from New York.	<b>Are you</b> from California?	I <b>am</b> .	I'm <b>not</b> .
<b>You're not</b> late.	<b>Am I</b> early?	<b>you are</b> .	<b>you're not</b> .
<b>She's not</b> from Russia.	<b>Is she</b> from Brazil?	<b>she is</b> .	<b>she's not</b> .
<b>He's not</b> from Italy.	<b>Is he</b> from Chile?	Yes, <b>he is</b> .	No, <b>he's not</b> .
<b>It's not</b> English.	<b>Is it</b> Korean?	<b>it is</b> .	<b>it's not</b> .
<b>We're not</b> from Japan.	<b>Are you</b> from China?	<b>we are</b> .	<b>we're not</b> .
<b>You're not</b> early.	<b>Are we</b> late?	<b>you are</b> .	<b>you're not</b> .
<b>They're not</b> in Mexico.	<b>Are they</b> in Canada?	<b>they are</b> .	<b>they're not</b> .

We're = We are

**A** Complete the conversations. Then practice with a partner.

- A: Hiroshi, are you and Maiko from Japan?  
 B: Yes, we are.  
 A: Oh? Are you from Tokyo?  
 B: No, I'm not. I am from Kyoto.
- A: Is Laura from the U.S.?  
 B: No, she's not. She's from the U.K.  
 A: Is she from London?  
 B: Yes, she is. But her parents are from Italy. she's not from the U.K. originally.  
 A: Is Laura's first language Italian?  
 B: No, she's not. Is English.
- A: Are Selina and Carlos from Mexico?  
 B: No, they're not. they are from Brazil.  
 A: Are you from Brazil, too?  
 B: No, I'm not. I'm from Peru.  
 A: So, is your first language Spanish?  
 B: Yes, it is.



**B** Match the questions with the answers. Then practice with a partner.

- Are you and your family from Canada? e
  - Is your first language English? c
  - Are you Japanese? e
  - Is Mr. Ho from Hong Kong? a
  - Is your mother from the U.S.? b
- No, he's not. He's from Singapore.
  - Yes, she is. She's from California.
  - No, it's not. It's Japanese.
  - No, we're not. We're from Australia.
  - Yes, we are. We're from Kyoto.

**C PAIR WORK** Write five questions like the ones in part B. Then ask and answer your questions with a partner.



**1 Negative statements and yes/no questions with be**

- ▶ Use **be + not** to form negative statements: Ana **isn't** a student. (NOT: Ana is no-a student.)
- ▶ You is a singular and a plural pronoun: Are **you** from Rio? Yes, I am./Yes, **we** are.

**A Unscramble the words to write negative statements.**

1. in California / not / New York City / is  
New York City is not in California.
2. London / not / from / we're  
We're not from London.
3. not / you and Tim / in my class / are  
You and Tim are not in my class.
4. is / my first language / Spanish / not  
My first language is not Spanish.
5. from / my mother / not / is / Seoul  
My mother is not from Seoul.
6. my keys / not / are / they  
They are not my keys.

**B Complete the conversations.**

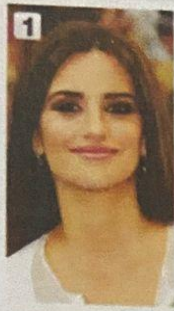
1. A: Are you and your family from Mexico?  
B: No, we are not. We are from Guatemala.
2. A: Are your first language English?  
B: Yes, it is. My parents are from Australia.
3. A: Are they Kenji and his friend Japanese?  
B: Yes, they are. But they are living in the U.S. now.
4. A: are we arriving my mother and I late?  
B: No, you are not. you arriving early!



## 2.2.- Where are they from?

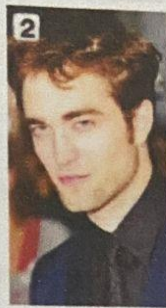
### WHERE ARE THEY FROM?

**A** Where are these people from? Check (✓) your guesses.



**Penelope Cruz**

- Mexico
- France
- Spain



**Robert Pattinson**

- the U.S.
- the U.K.
- Canada



**Haru Nomura**

- South Korea
- Japan
- China



**Cate Blanchett**

- Australia
- New Zealand
- South Africa



**Javier Hernández**

- Brazil
- Mexico
- Chile

**B PAIR WORK** Compare your guesses. Then check your answers at the bottom of the page.

A: Is Penelope Cruz from Mexico?

B: No, she's not.

A: Is she from France?

Answers: 1. Spain 2. the U.K. 3. Japan 4. Australia 5. Mexico

### CONVERSATION *He's cute.*

🎧 Listen and practice.

Emma: Who's that?

Jill: He's my brother.

Emma: Wow! He's cute. What's his name?

Jill: James. We call him Jim.

Emma: Oh, how old is he?

Jill: He's twenty-one years old.

Emma: What's he like? Is he nice?

Jill: Yes, he is - and he's very smart, too!

Emma: And who's that?

Jill: My sister Tammy. She's only twelve. She's the baby of the family.



## Bibliography

[English Anthology of the UDS page 32, 33 and 34](#)

