

## 2.2.- Negative and Questions with be

### Negative statements and yes/no questions with be

**I'm not** from New York.  
**You're not** late.  
**She's not** from Russia.  
**He's not** from Italy.  
**It's not** English.  
**We're not** from Japan.  
**You're not** early.  
**They're not** in Mexico.

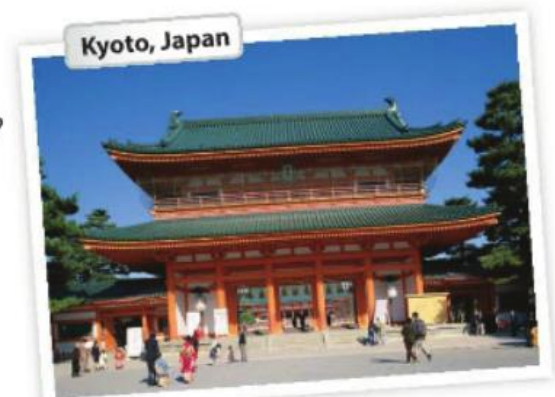
We're = We are

**Are you** from California?  
**Am I** early?  
**Is she** from Brazil?  
**Is he** from Chile?  
**Is it** Korean?  
**Are you** from China?  
**Are we** late?  
**Are they** in Canada?

<b>I am.</b>	<b>I'm</b>	<b>not.</b>
<b>you are.</b>	<b>you're</b>	<b>not.</b>
<b>she is.</b>	<b>she's</b>	<b>not.</b>
Yes, <b>he is.</b>	No, <b>he's</b>	<b>not.</b>
<b>it is.</b>	<b>it's</b>	<b>not.</b>
<b>we are.</b>	<b>we're</b>	<b>not.</b>
<b>you are.</b>	<b>you're</b>	<b>not.</b>
<b>they are.</b>	<b>they're</b>	<b>not.</b>

**A** Complete the conversations. Then practice with a partner.

- A: Hiroshi, ~~are~~ you and Maiko from Japan?  
 B: Yes, we are .  
 A: Oh? ..... you from Tokyo?  
 B: No, are not. I am from Kyoto.
- A: Is i'm Laura from the U.S.?  
 B: No, she is not. She's from the U.K.  
 A: Is she from London?  
 B: Yes, she is . But her parents are from Italy. She's not from the U.K. originally.  
 A: Is Laura's first language Italian?  
 B: No, it is not. It's English.
- A: Are Selina and Carlos from Mexico?  
 B: No, they're not. They are from Brazil.  
 A: Are you from Brazil, too?  
 B: No, I am not. I'm from Peru.  
 A: So, it's your first language Spanish?  
 B: Yes, it is .



**B** Match the questions with the answers. Then practice with a partner.

- |  |   |
|--|---|
| 1. Are you and your family from Canada? ..... <sup>d</sup> ..... | a. No, he's not. He's from Singapore.   |
| 2. Is your first language English? ..... <sup>c</sup> .....      | b. Yes, she is. She's from California.  |
| 3. Are you Japanese? ..... <sup>e</sup> .....                    | c. No, it's not. It's Japanese.         |
| 4. Is Mr. Ho from Hong Kong? ..... <sup>a</sup> .....            | d. No, we're not. We're from Australia. |
| 5. Is your mother from the U.S.? ..... <sup>b</sup> .....        | e. Yes, we are. We're from Kyoto.       |

**C PAIR WORK** Write five questions like the ones in part B. Then ask and answer your questions with a partner.

**1 Negative statements and yes/no questions with be**

- ▶ Use *be* + *not* to form negative statements: Ana **isn't** a student. (NOT: ~~Ana is no a student.~~)
- ▶ *You* is a singular and a plural pronoun: Are **you** from Rio? Yes, **I** am./Yes, **we** are.

**A** Unscramble the words to write negative statements.

1. in California / not / New York City / is  
New York City is not in California.
2. London / not / from / we're  
we're not from London
3. not / you and Tim / in my class / are  
you and Tim are not in my class
4. is / my first language / Spanish / not  
Spanish is not my first language
5. from / my mother / not / is / Seoul  
my mother is not from Seoul
6. my keys / not / are / they  
they are not my keys

**B** Complete the conversations.

1. A: ..... Are ..... you and your family from Mexico?  
B: No, ..... we're ..... not. .... We are ..... from Guatemala.
2. A: ..... is ..... your first language English?  
B: Yes, it ..... is ..... . My parents ..... are ..... from Australia.
3. A: ..... Are ..... Kenji and his friend Japanese?  
B: Yes, ..... they ..... are. But ..... they're ..... in the U.S. now.
4. A: ..... Are ..... my mother and I late?  
B: No, ..... you're ..... not. .... You are ..... early!

## 2.2.- Where are they from?

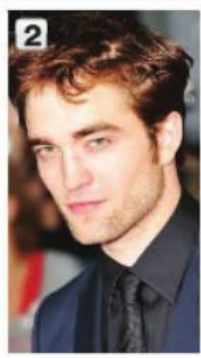
### WHERE ARE THEY FROM?

**A** Where are these people from? Check (✓) your guesses.



**Penelope Cruz**

- Mexico
- France
- Spain



**Robert Pattinson**

- the U.S.
- the U.K.
- Canada



**Haru Nomura**

- South Korea
- Japan
- China



**Cate Blanchett**

- Australia
- New Zealand
- South Africa



**Javier Hernández**

- Brazil
- Mexico
- Chile

**B PAIR WORK** Compare your guesses. Then check your answers at the bottom of the page.

- A: Is Penelope Cruz from Mexico?  
 B: No, she's not.  
 A: Is she from France?

Answers: 1. Spain 2. the U.K. 3. Japan 4. Australia 5. Mexico

### CONVERSATION *He's cute.*

🎧 Listen and practice.

- Emma: Who's that?  
 Jill: He's my brother.  
 Emma: Wow! He's cute. What's his name?  
 Jill: James. We call him Jim.  
 Emma: Oh, how old is he?  
 Jill: He's twenty-one years old.  
 Emma: What's he like? Is he nice?  
 Jill: Yes, he is – and he's very smart, too!  
 Emma: And who's that?  
 Jill: My sister Tammy. She's only twelve. She's the baby of the family.

