



Mi Universidad

Antología UDS

Nombre del Alumno: David Ramírez López

Nombre del tema: Activity 2

Parcial: 2

Nombre de la Materia: Ingles I

Nombre del profesor: Andrea Berenice Segura

Nombre de la Licenciatura: psicología

Cuatrimestre: I

2.2.- Negative and Questions with be

Negative statements and yes/no questions with be

| | | | |
|-------------------------------|---------------------------------|---------------------|---------------------|
| I'm not from New York. | Are you from California? | I am . | I'm not |
| You're not late. | Am I early? | you are . | you're not |
| She's not from Russia. | Is she from Brazil? | she is . | she's not |
| He's not from Italy. | Is he from Chile? | Yes, he is . | No, he's not |
| It's not English. | Is it Korean? | it is . | it's not |
| We're not from Japan. | Are you from China? | we are . | we're not |
| You're not early. | Are we late? | you are . | you're not |
| They're not in Mexico. | Are they in Canada? | they are . | they're not |

We're = We are

A Complete the conversations. Then practice with a partner.

- A: Hiroshi, are you and Maiko from Japan?
 B: Yes, we are.
 A: Oh? are you from Tokyo?
 B: No, I am not. I am from Kyoto.
- A: is Laura from the U.S.?
 B: No, she's not. She's from the U.K.
 A: is she from London?
 B: Yes, she isn't. But her parents are from Italy. she's not from the U.K. originally.
 A: is Laura's first language Italian?
 B: No, she's not. she's English.
- A: are Selina and Carlos from Mexico?
 B: No, they're not. they're from Brazil.
 A: are you from Brazil, too?
 B: No, I am not. I'm from Peru.
 A: So, is your first language Spanish?
 B: Yes, it is.



B Match the questions with the answers. Then practice with a partner.

- | | |
|--|---|
| 1. Are you and your family from Canada? <u>a</u> | a. No, he's not. He's from Singapore. |
| 2. Is your first language English? <u>c</u> | b. Yes, she is. She's from California. |
| 3. Are you Japanese? <u>e</u> | c. No, it's not. It's Japanese. |
| 4. Is Mr. Ho from Hong Kong? <u>d</u> | d. No, we're not. We're from Australia. |
| 5. Is your mother from the U.S.? <u>b</u> | e. Yes, we are. We're from Kyoto. |

C PAIRWORK Write five questions like the ones in part B. Then ask and answer your questions with a partner.

1 Negative statements and yes/no questions with be

- ▶ Use *be* + *not* to form negative statements: Ana **isn't** a student. (NOT: Ana is no a student.)
- ▶ *You* is a singular and a plural pronoun: Are **you** from Rio? Yes, I am./Yes, **we** are.

A Unscramble the words to write negative statements.

1. in California / not / New York City / is
New York City is not in California
2. London / not / from / we're
We're not from London
3. not / you and Tim / in my class / are
You and Tim are not in my class
4. is / my first language / Spanish / not
My first language is not Spanish
5. from / my mother / not / is / Seoul
My mother is not from Seoul
6. my keys / not / are / they
They are not my keys

B Complete the conversations.

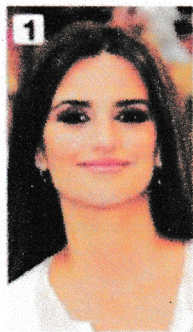
1. A: Are you and your family from Mexico?
B: No, we are not. We are from Guatemala.
2. A: is your first language English?
B: Yes, it is. My parents are from Australia.
3. A: are Kenji and his friend Japanese?
B: Yes, they are. But they are in the U.S. now.
4. A: are my mother and I late?
B: No, you are not. You are early!



2.2.- Where are they from?

WHERE ARE THEY FROM?

A Where are these people from? Check (✓) your guesses.



Penelope Cruz

- Mexico
 France
 Spain



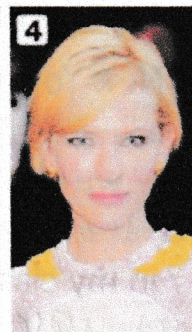
Robert Pattinson

- the U.S.
 the U.K.
 Canada



Haru Nomura

- South Korea
 Japan
 China



Cate Blanchett

- Australia
 New Zealand
 South Africa



Javier Hernández

- Brazil
 Mexico
 Chile

B PAIR WORK Compare your guesses. Then check your answers at the bottom of the page.

A: Is Penelope Cruz from Mexico?

B: No, she's not.

A: Is she from France?

Answers: 1. Spain 2. the U.K. 3. Japan 4. Australia 5. Mexico

CONVERSATION *He's cute.*

🎧 Listen and practice.

Emma: Who's that?

Jill: He's my brother.

Emma: Wow! He's cute. What's his name?

Jill: James. We call him Jim.

Emma: Oh, how old is he?

Jill: He's twenty-one years old.

Emma: What's he like? Is he nice?

Jill: Yes, he is – and he's very smart, too!

Emma: And who's that?

Jill: My sister Tammy. She's only twelve. She's the baby of the family.

