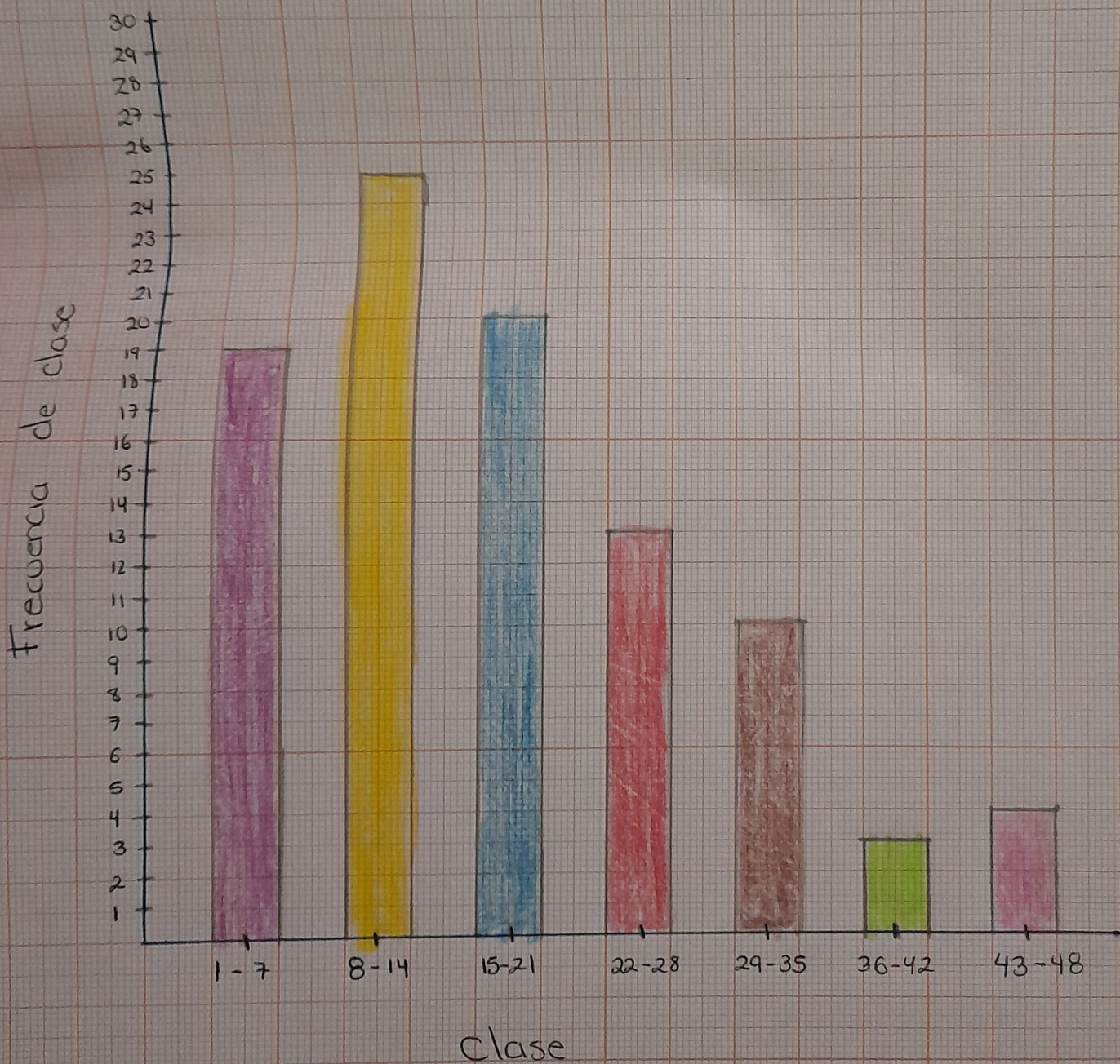


Intervalo	$F_i$	$F_r$	$F_p$	$FPA$	$M_i$	$F_i \cdot M_i$	$M_i - \bar{x}$	$(M_i - \bar{x})^2$	$F_i(M_i - \bar{x})^2$
1-7	19	0.21	21	21	4	76	-13.6	184.96	3,514.24
8-14	25	0.26	26	47	11	275	-6.6	43.56	1,089
15-21	20	0.21	21	68	18	360	0.4	0.16	3.2
22-28	13	0.14	14	82	25	325	7.4	54.76	711.88
29-35	10	0.11	11	93	32	320	14.4	207.36	2,073.6
36-42	3	0.03	3	96	39	117	21.4	457.96	1,373.88
43-48	4	0.04	4	100	45.5	182	27.9	778.41	3,113.64
<b>Total</b>	<b>94</b>	<b>1</b>	<b>100</b>			<b>1,655</b>			<b>11,879.44</b>

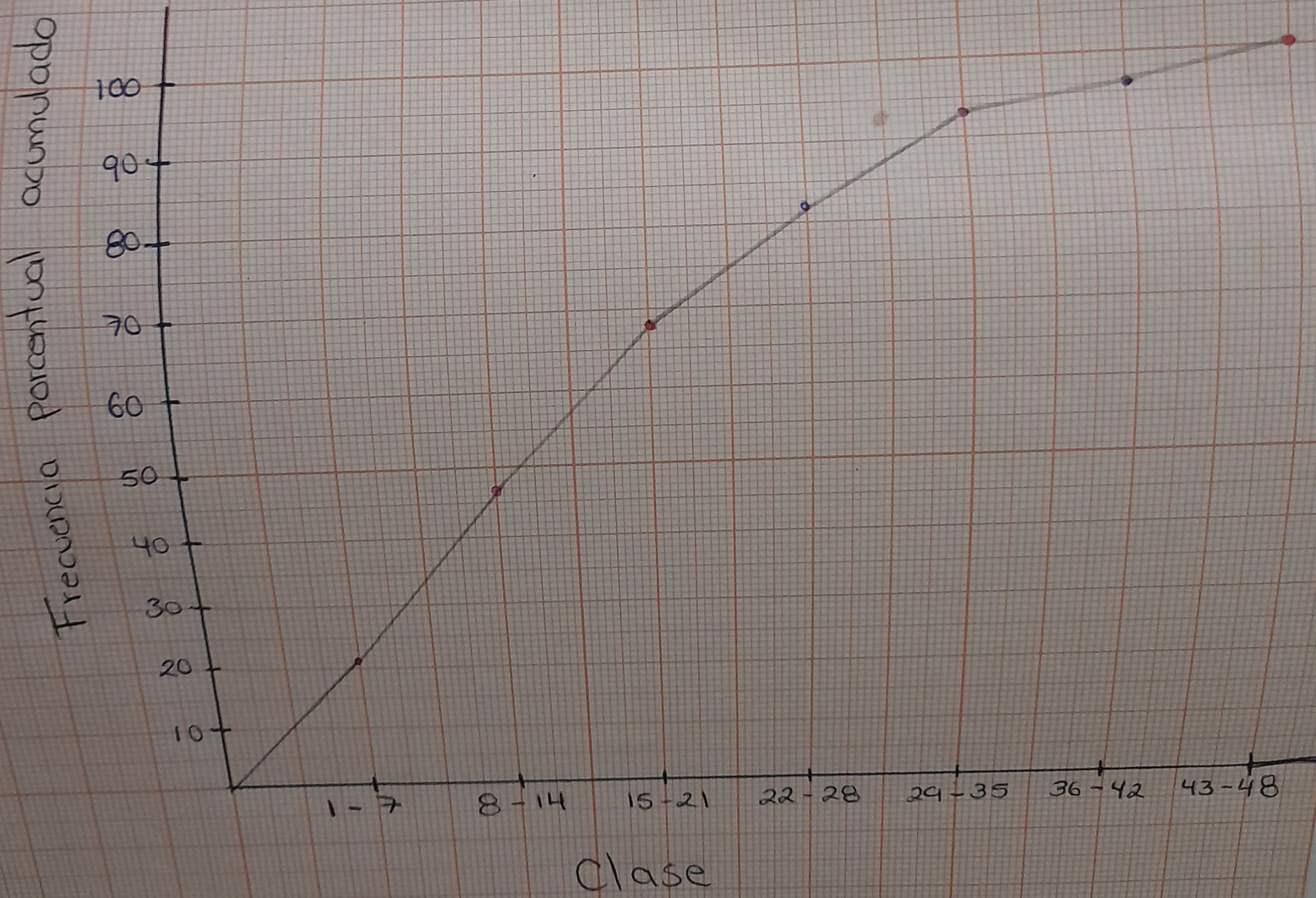
Ponto medio:  $1+7=8/2=4$

$$\bar{x} = \frac{1655}{94} = 17.6$$

# Gráfica de barra.



# Gráfica de ojiva



# Grafica circular

