

WHAT TIME IS IT?

O'CLOCK

It's one o'clock



AFTER

It's one-oh-five / it's five after one



QUARTER AFTER

it's one-fifteen / it's quarter after one



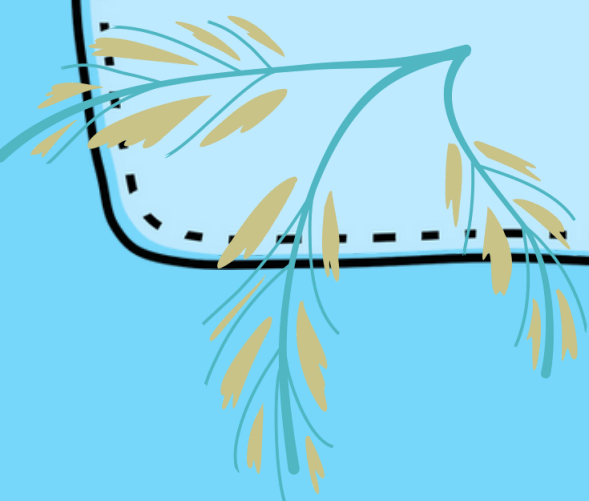
TO

it's one-forty / it's twenty to two



QUARTER TO

it's one forty-five / it's a quarter to two

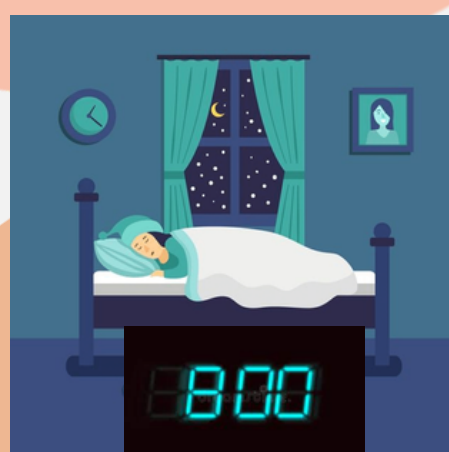




WH- QUESTIONS

WHATS?

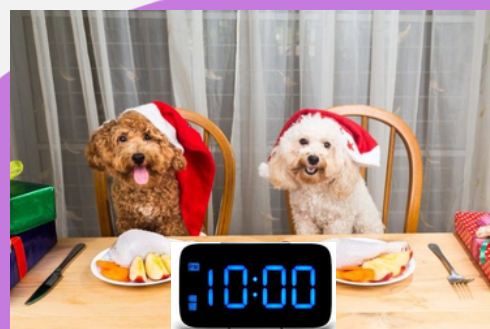
WHAT'S VICTOR DOING?
HE'S SLEEPING RIGHT NOW



WHAT'S JOCTAN DOING?
IT'S 6:00 A.M., SO HE'S GETTING UP



WHAT ARE KIRA AND OREJAS DOING?
THEY'RE HAVING BREAKFAST



WHAT'S YURI DOING?
SHE'S GOING TO WORK



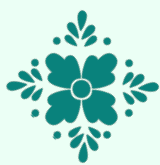
WHAT ARE ABI AND AMILCAR DOING?
IT'S NOON, SO THEY'RE EATING LUNCH.



WHAT'S ALEX DOING?
HE'S WORKING



SIMPLE PRESENT STATEMENTS



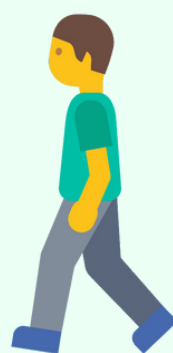
WORKS (+)

HE WORKS NEAR
HERE



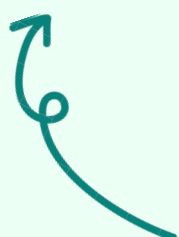
RIDE (+)

YOU RIDE YOUR
BIKE TO SCHOOL



WALK(+)

I WALK TO
SCHOOL

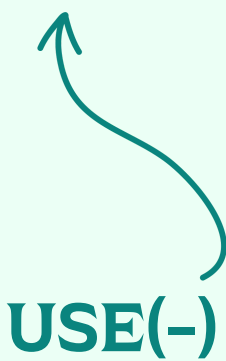


IT IS USED TO TALK ABOUT HABITS,
ROUTINES OR EVENTS THAT ARE
REPEATED IN CERTAIN PERIODS OF TIME.
EXAMPLE: I DRINK COFFE EVERY
MORNING



DRIVE (-)

SHE DOESN'T DRIVE
TO WORK



USE(-)

THEY'RE NOT NEED A CAR



**VERBS ENDINGS:
HE, SHE , IT**

**WALK- WALKS
RIDE-RIDES
STUDY-STUDIES
WATCHE-WATCHES**

Simple present statements with irregular verb

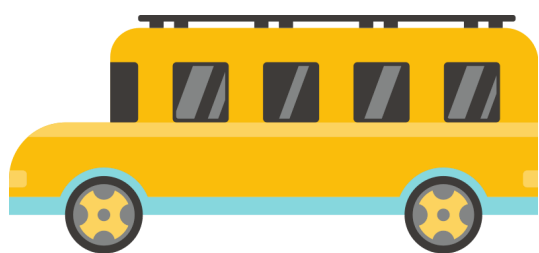
I/YOU/WE/THEY



I HAVE A BIKE



WE DO OUR HOMEWORK EVERY DAY



MY PARENTS GO TO WORK BY BUS

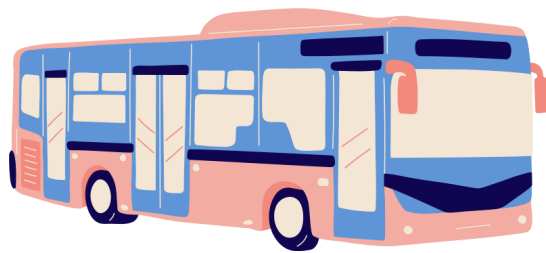
HE/SHE/IT



MY FATHER HAS A CAR



MY MOTHER DOES A LOT OF WORK AT HOME



THE BUS GOES DOWNTOWN

DON'T ADD -S TO THE VERB: SHE DOESN'T LIVE HERE

SIMPLE PRESENT

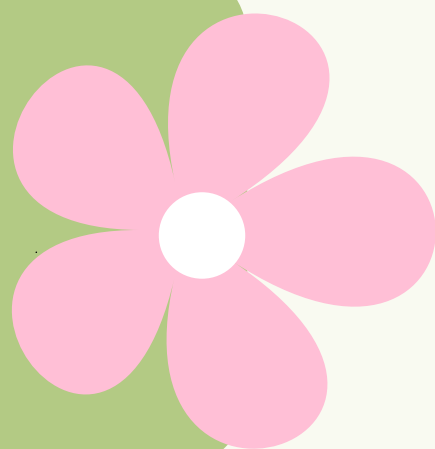
QUESTIONS



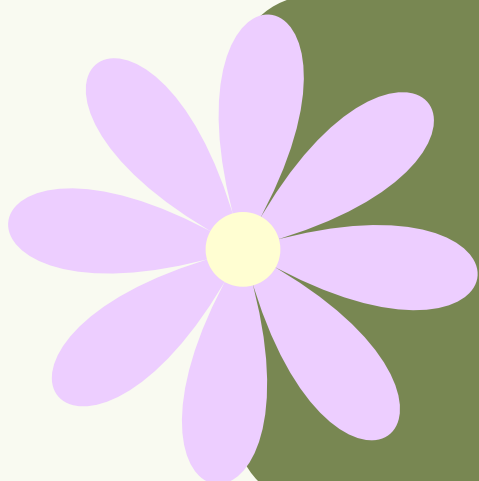
DO YOU GET UP EARLY?
-NO, I GET UP LATE.



DOES HE EAT LUNCH AT
NOON?
-NO, HE EATS LUNCH AT ONE
O'CLOCK



WHAT TIME DO YOU GET
UP?
-AT TEN O'CLOCK



WHEN DO THEY TAKE THE
SUBWAY?
-ON TUESDAY AND THURSDAY

