

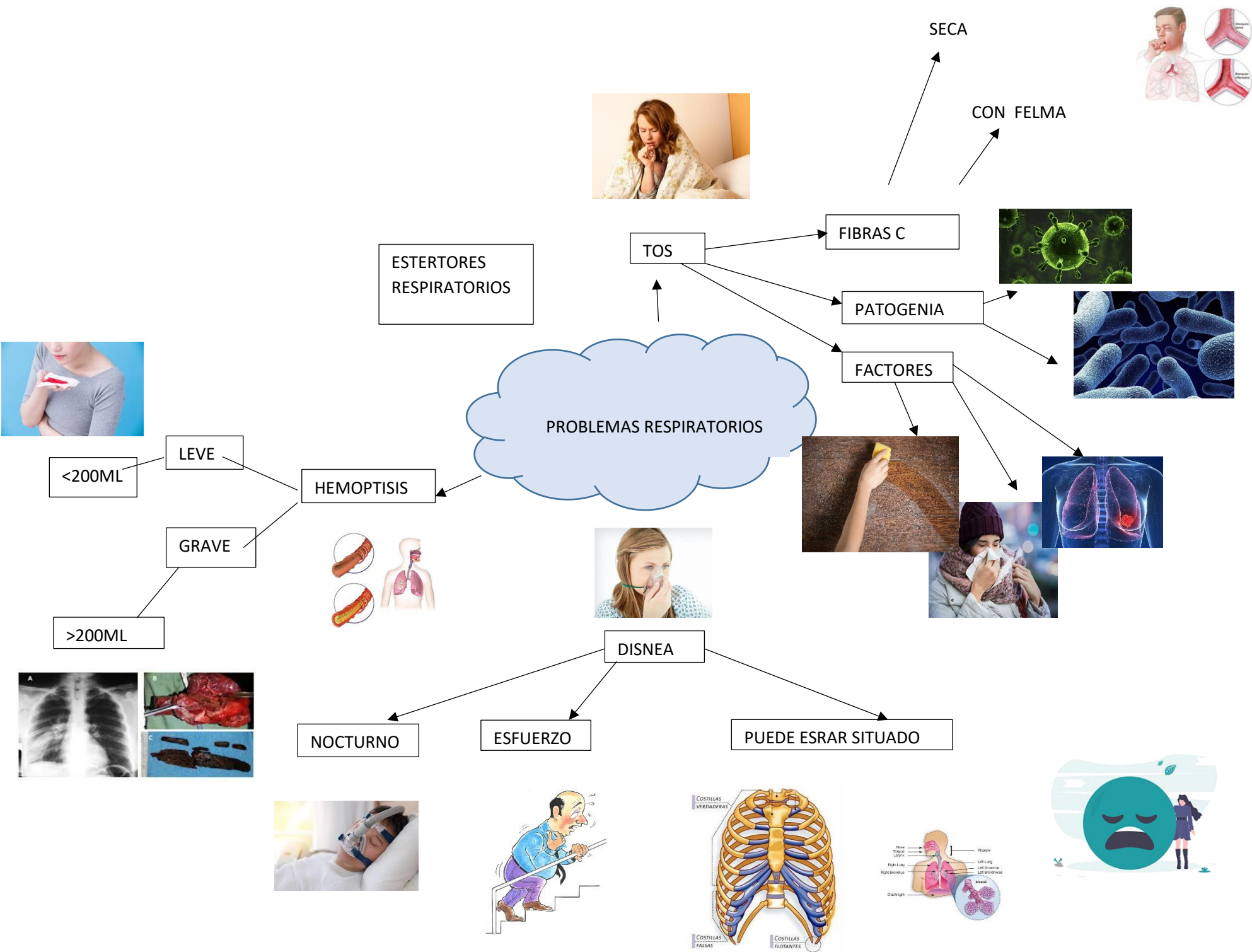


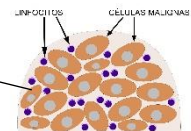
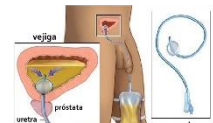
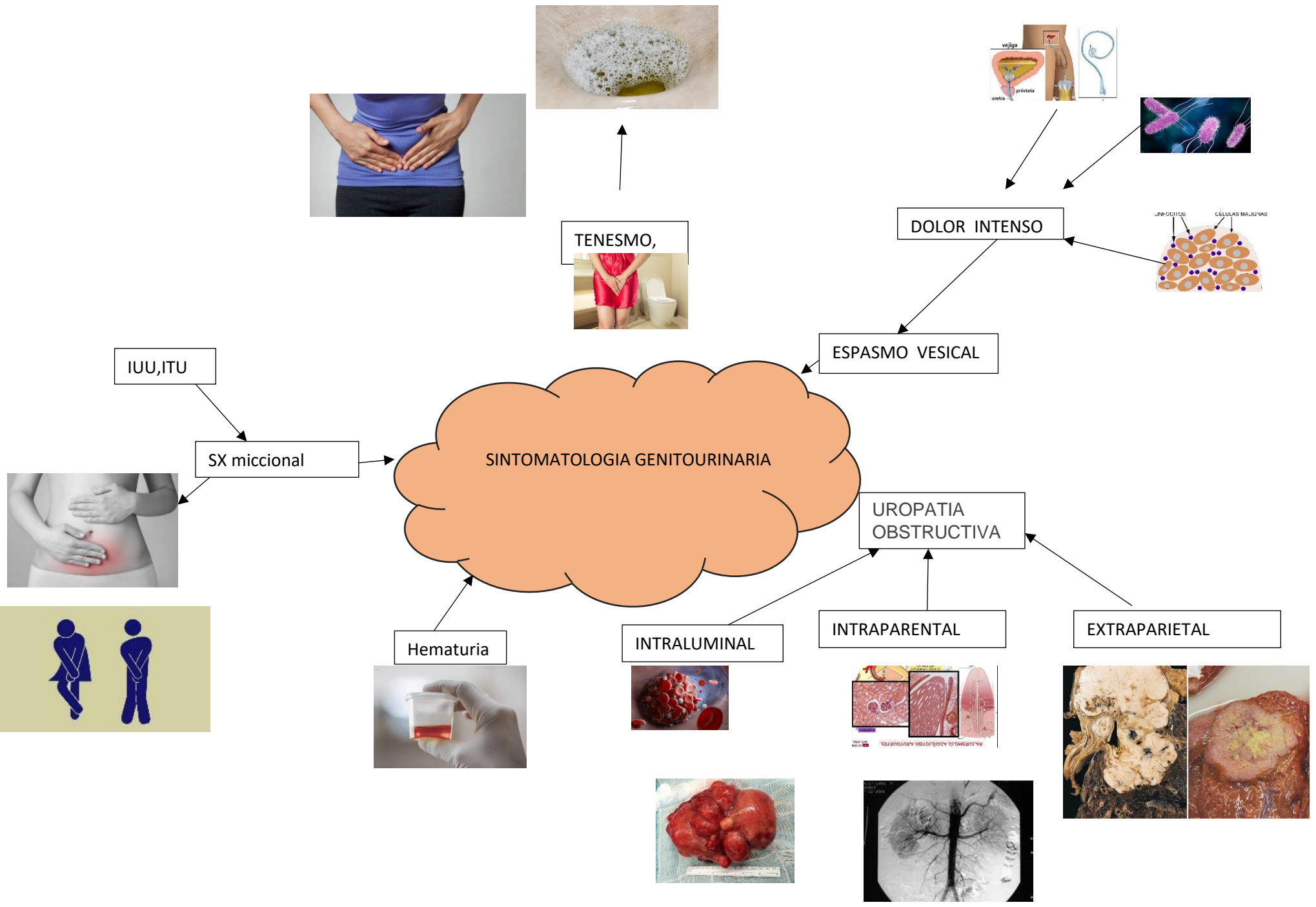
# UNIVERSIDAD DEL SURESTE

CAMPUS COMITÁN

LICENCIATURA EN MEDICINA HUMANA

ALUMNO(A): GUADALUPE DEL CARMEN COELLO SALGADO





IUU, ITU

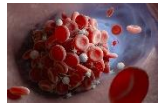
SX miccional



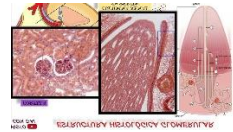
Hematuria



INTRALUMINAL



INTRAPARENTAL



EXTRAPARIETAL



DOLOR INTENSO

ESPASMO VESICAL

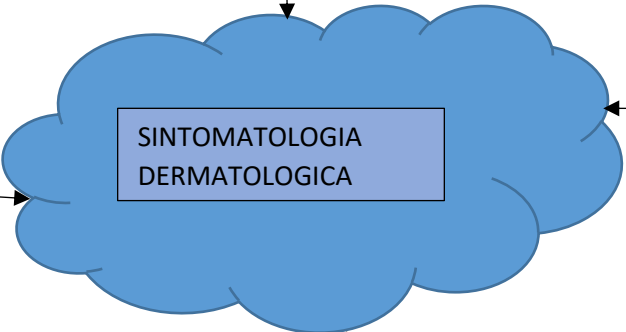
UROPATIA OBSTRUCTIVA

SINTOMATOLOGIA GENITOURINARIA



ULCERAS TUMORALES

ULCERAS POR PRESÓN



LINFEDEMA

PRURITO

