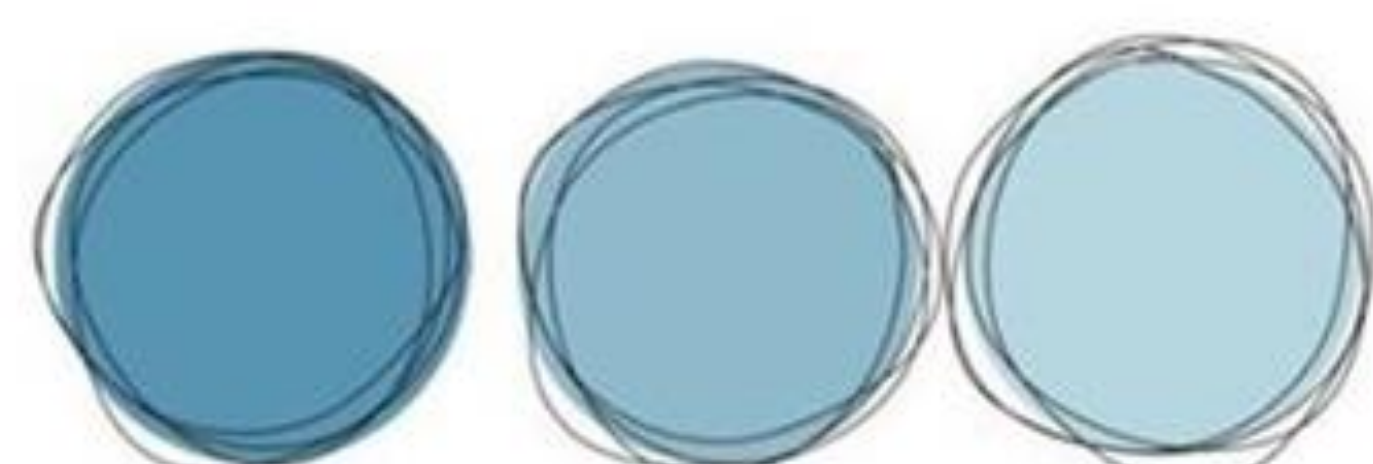
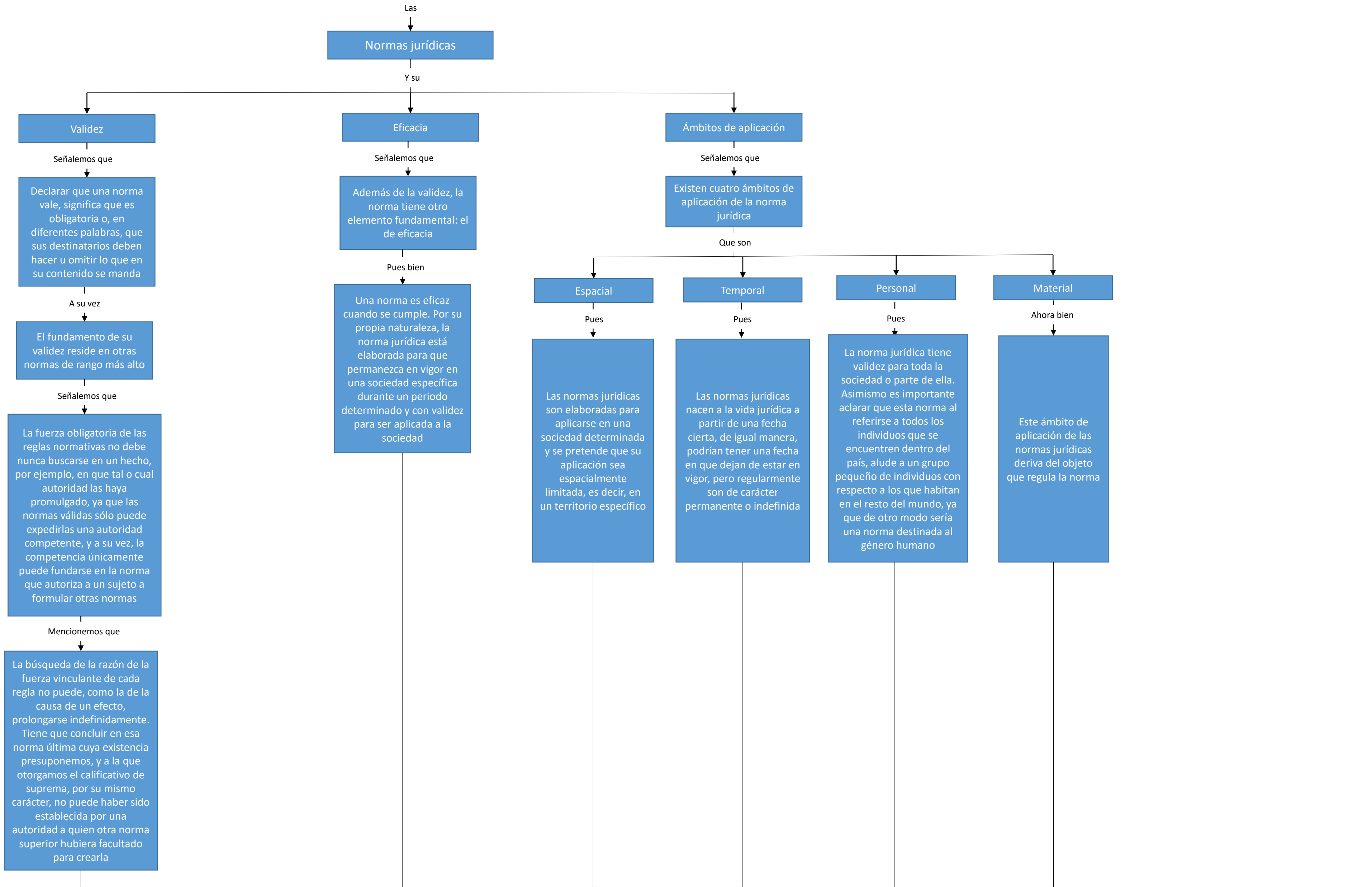
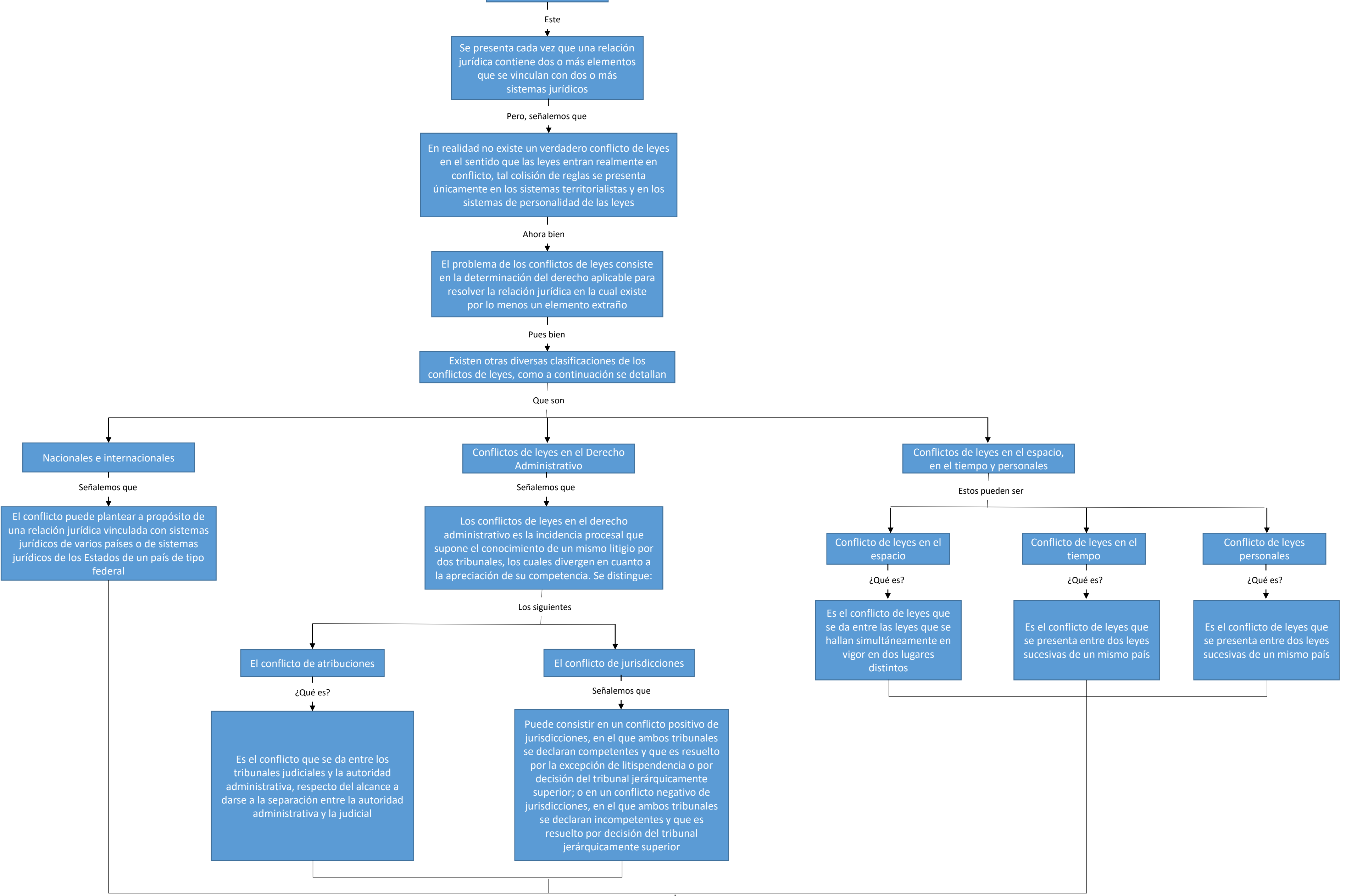


The title "Mapa conceptual" is written in a large, black, cursive font. It is flanked by two clusters of blue flowers. The flowers on the left are larger and more prominent, while the ones on the right are smaller and more delicate.

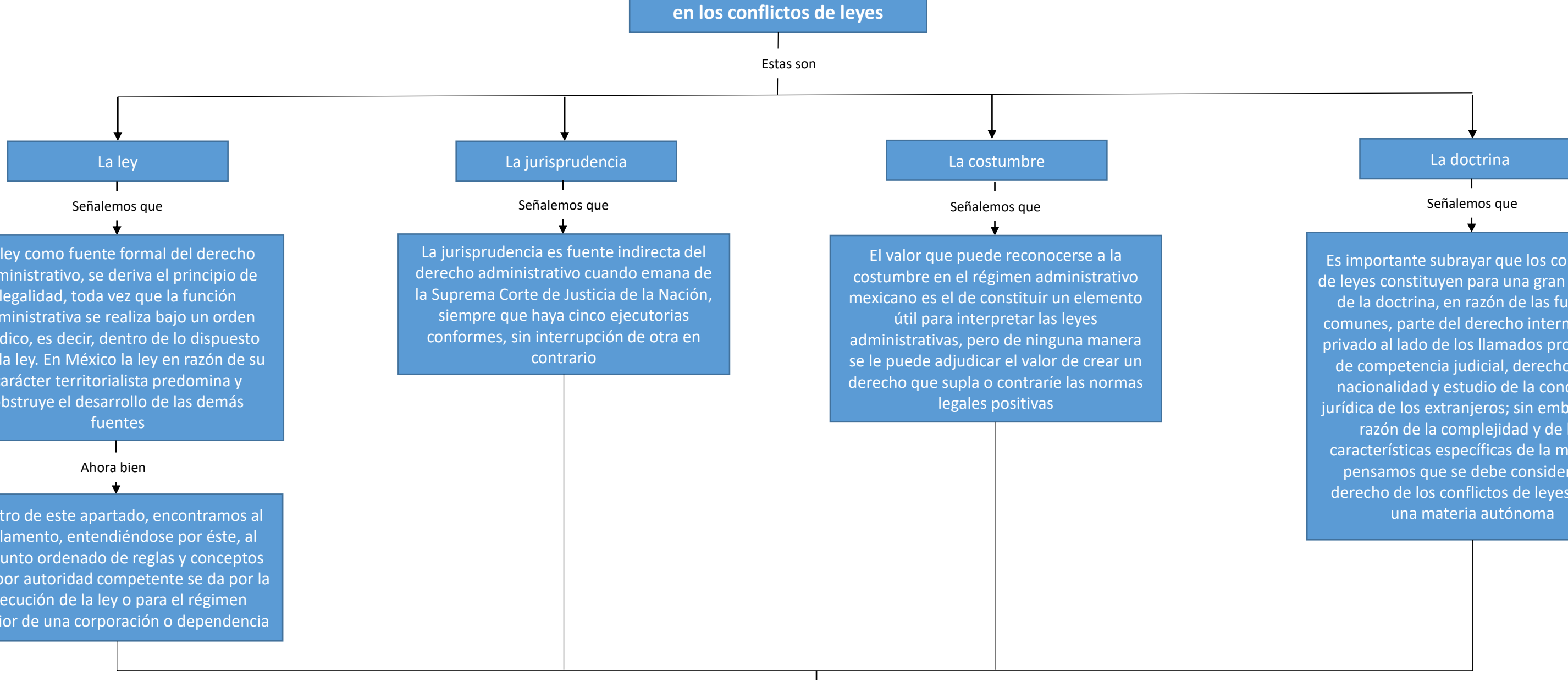
Derecho conflictual



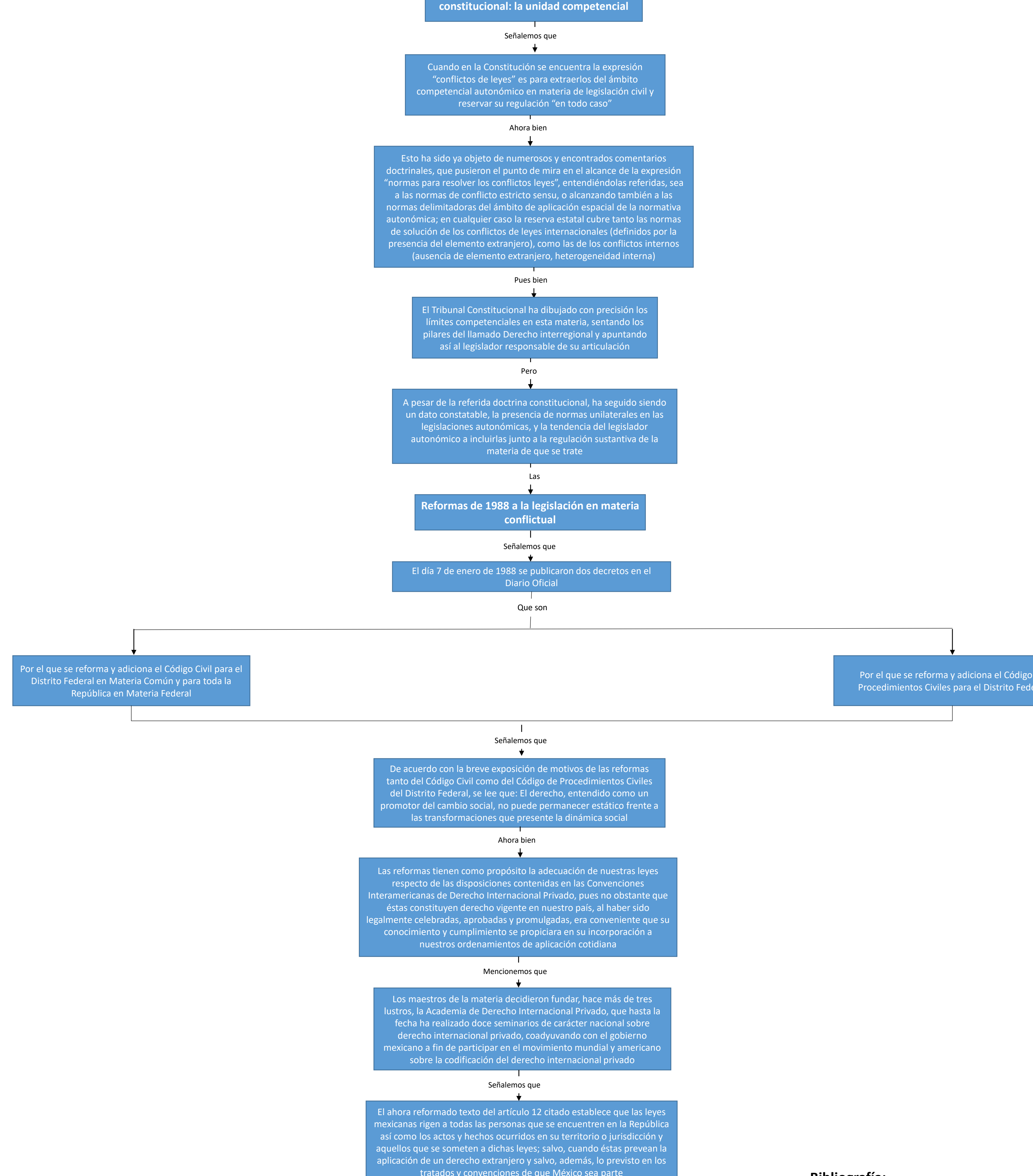
Conflicto de leyes



Fuentes nacionales de derecho en los conflictos de leyes



Conexiones desde la perspectiva constitucional: la unidad competencial



Bibliografía:
Información obtenida de la antología brindada por la institución, de la materia "Derecho internacional privado" de los temas 2.1-2.2 (pág. 35-49)