



Nombre de alumno: Elías Javier
Bravo Pérez

Nombre del profesor: Arq. Pedro
Alberto García López

Nombre del trabajo: Actividad aúlica

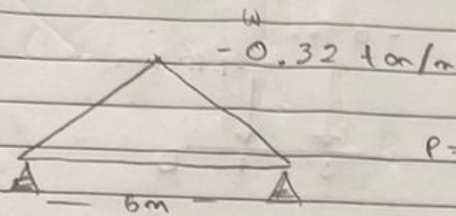
Materia: Estática para la
arquitectura.

Grado: 3er Cuatrimestre.

Carrera: Arquitectura.

Comitán de Domínguez, Chiapas a 9 de julio de 2022

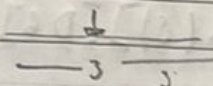
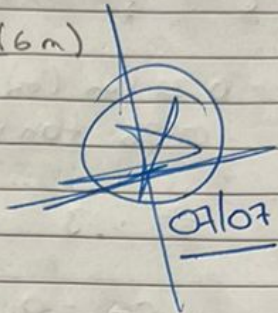
25/06/07



$$P = \frac{0.32 \text{ ton/m} (6 \text{ m})}{2}$$

$$P = 0.96 \text{ ton}$$

$$UP = \frac{L}{2} = \frac{6}{2} = 3$$

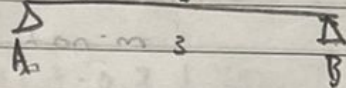


~~$$M_A = -0.96 \text{ ton} (3)$$~~

~~$$M_A = -2.88 \text{ ton-m}$$~~

~~$$M_B = 0.96 \text{ ton} (3)$$~~

~~$$M_B = 2.88$$~~



$$\sum M_A = 0$$

$$-0.96 \text{ ton} (3) + D(6) = 0$$

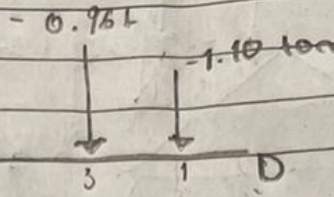
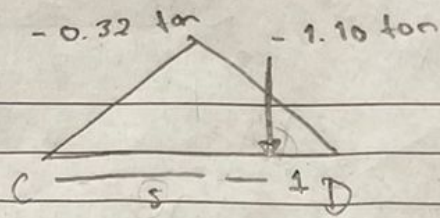
$$-2.88 \text{ ton-m} + DC = 0$$

$$C = 0.48 \text{ ton}$$

$$\sum F_y = 0 \Rightarrow A + (-0.96 \text{ ton} + 0.48 \text{ ton}) = 0$$

$$A - 0.48$$

$$A = 0.48 \text{ ton}$$



$$P = -0.32 \text{ ton (6)}_2$$

$$P = -0.96 \text{ ton} \cdot \text{m}$$

$$UP = \frac{6}{2} = 3$$

$$\sum M = 0 \quad [-0.96 \text{ ton (3)}] + [-1.10 \text{ ton (5)}] + [D(6)]$$

$$-2.88 + -5.5 + D(6) = 0$$

$$-8.38 + D(6) = 0$$

$$D = \frac{-8.38}{6}$$

$$D = 1.3966 \text{ ton}$$

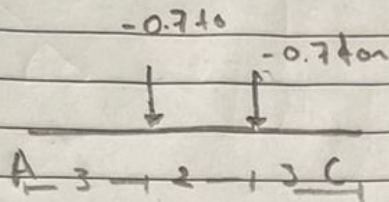
$$\sum F_y = C - 0.96 \text{ ton} - 1.10 \text{ ton} + 1.3966 = 0$$

$$C - 0.6634 \text{ ton} = 0$$

$$C = 0.6634 \text{ ton}$$

$$A = 0$$

0.78

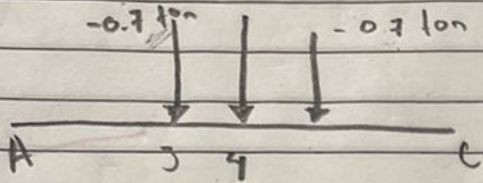


$$P = \frac{0.78 \text{ ton} (8 \text{ m})}{2}$$

~~$$P = 3.12 \text{ ton}$$~~

$$P = -6.24 \text{ ton} \cdot \text{m}$$

-6.24 ton



$$UP = \frac{8}{2} = 4$$

$$\sum M_y = -0.7(3) + -6.24(4) + -0.7(5) + (8) = 0$$

$$-2.1 + -24.96 + -3.5 + (8) = 0$$

$$-30.56 + (8) = 0$$

$$C = \frac{+30.56}{8}$$

$$C = \underline{3.82 \text{ ton}}$$

7.64

$$\sum M_A = A - 0.7 - 6.24 - 0.7 + 3.82 \text{ ton} = 0$$

$$A = \underline{3.82 \text{ ton}}$$

$$A = 0.48 + 3.82 \text{ ton} = 4.3 \text{ ton}$$

$$B = 0.48 \text{ ton}$$

$$C = 0.6634 + 3.82 \text{ ton} = 4.4834 \text{ ton}$$

$$D = 1.3966 \text{ ton}$$

Scribe