



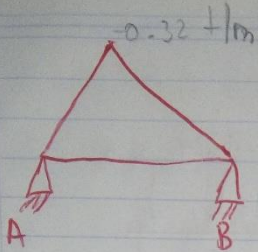
Liliana Vázquez Moreno

Pedro Alberto García López

Estática para la arquitectura

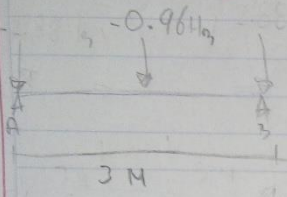
Unidad 3

10 de julio del 2022



$$p = \frac{0.32 \text{ t/m} \cdot (6 \text{ m})}{2} = -0.96 \text{ ton}$$

$$U_p = \frac{6}{2} = 3 \text{ m}$$



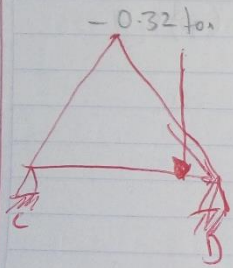
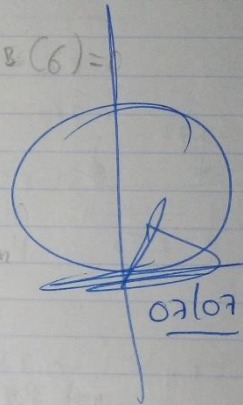
$$M_B = 0.96 \text{ ton} \cdot (3 \text{ m}) + R(6) = 0$$

$$M_B = -2.88 \text{ t/m} = 0$$

$$B = 0.48 \text{ t/m}$$

$$M_A = -0.96 \text{ ton} \cdot 0.48 \text{ ton}$$

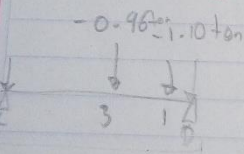
$$A = 0.48 \text{ ton}$$



$$p = \frac{0.32 \text{ ton} \cdot (6 \text{ m})}{2} = -0.96 \text{ ton}$$

$$U_p = -0.96 \text{ ton}$$

$$U_p = \frac{6}{2} = 3$$



$$E_B = [-0.96 \text{ ton} \cdot (3)] + [-1.10 \text{ ton} \cdot (5)] [D_6]$$

$$-2.88 - 5.5 = D_6 = 0$$

$$-8.38 + D_6 = 0$$

$$D = \frac{-8.38}{6}$$

$$D = 1.3966 \text{ ton}$$

TEMA

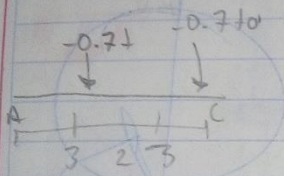
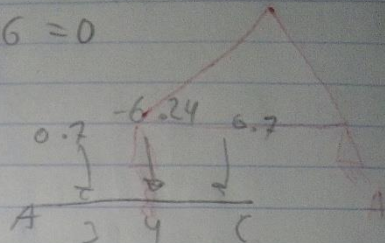
0.7 ton - 0.7 ton

FECHA

$$\sum y = C - 0.96 \text{ ton} - 1.10 + 1.3966 = 0$$

$$C = -0.6634 \text{ ton} = 0$$

$$C = 0.6634 \text{ ton}$$



$$p = 0.78 \text{ ton} (8 \text{ m})$$

$$p = 6.24 \text{ ton/m}$$

$$V_D = 8 = 4 \text{ m}$$

rolco

$$\sum M_y = (-0.7 \text{ ton} (3)) - 6.24 (4) - 0.7 (5) + C(8) = 0$$

$$-2.1 \text{ ton} - 24.96 \text{ ton} - 3.5 + C(8) = 0$$

$$-30.56 + C(8) = 0$$

$$C = \frac{-30.56}{8} = -3.82 = 0$$

$$C = 3.82$$

$$-0.7 - 6.24 - 0.7 + 3.82 = 0$$

$$A = -3.82 \text{ ton}$$

TEMA

FECHA

FECHA

$$A = 0.48 + 3.82 \text{ ton} = 4.3 \text{ ton}$$

$$B = 0.48 \text{ ton}$$

$$C = 0.6634 + 3.82 \text{ ton} = 4.4834 \text{ ton}$$

$$D = 1.3966 \text{ ton}$$