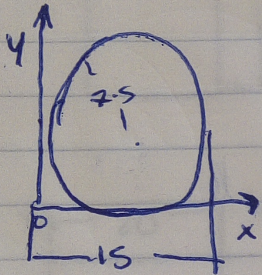
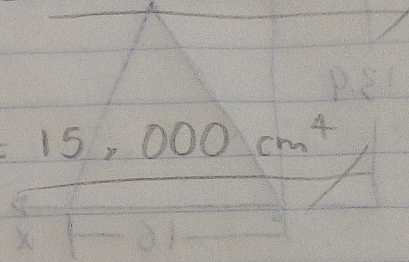
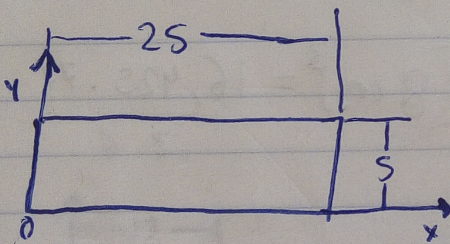
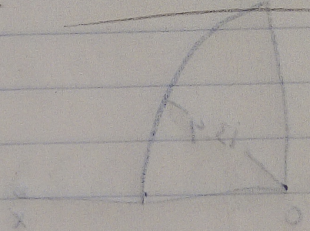


$$\bar{I}_x = \frac{30 (20 \text{ cm})^3}{36} = 6666.6666 \text{ cm}^4$$

$$\bar{I}_y = \frac{(30 \text{ cm})^3 20 \text{ cm}}{36} = 15,000 \text{ cm}^4$$

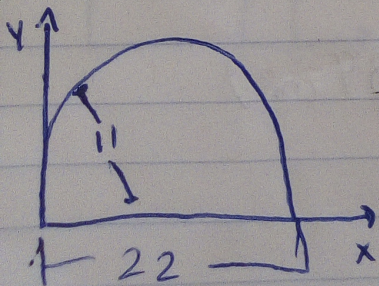
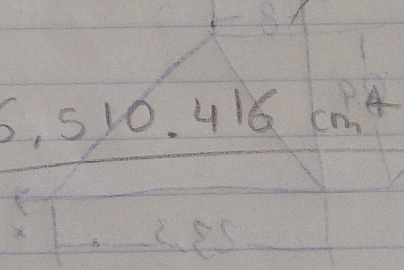


$$\bar{I}_x = \bar{I}_y = \frac{3.1416 (7.5 \text{ cm})^4}{4} = 2,485.054 \text{ cm}^4$$



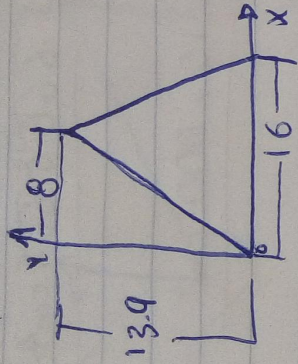
$$\bar{I}_x = \frac{25 (5 \text{ cm})^3}{12} = 260.416 \text{ cm}^4$$

$$\bar{I}_y = \frac{(25 \text{ cm})^3 5 \text{ cm}}{12} = 6,510.416 \text{ cm}^4$$



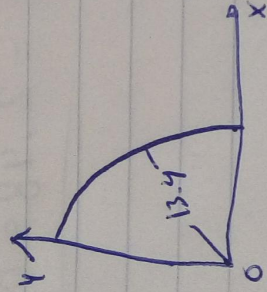
$$\bar{I}_x = 0.1098 (11)^4$$

$$= 1,607.5818 \text{ cm}^4$$



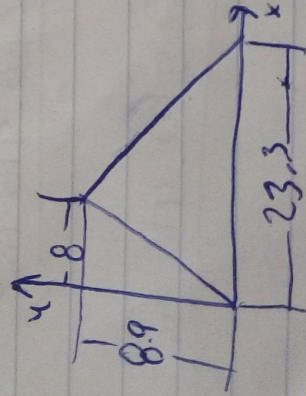
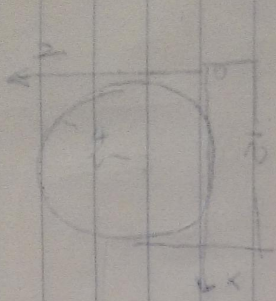
$$\bar{I}_x = \frac{16 (13.9 \text{ cm})^3}{36} = 1,193.608 \text{ cm}^4$$

$$\bar{I}_y = \frac{(16 \text{ cm}) \cdot 13.9}{48} = 486.133 \text{ cm}^4$$



$$\bar{I}_x = 0.05488 (13.4)^4$$

$$= 1,769.429 \text{ cm}^4$$



$$\bar{I}_y = \frac{23.3 (3.8 \text{ cm})^3}{36} = 16,425.77$$

$$= 456.271 \text{ cm}^4$$

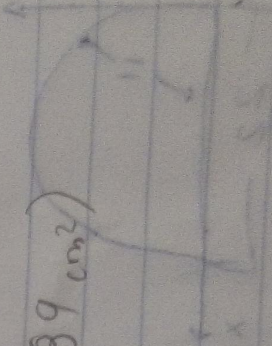
$$\bar{I}_y = 23.3 \text{ cm} (3.8 \text{ cm})^3 [68 \text{ cm}^2] - (8 \text{ cm} \times 23.3 \text{ cm}) + (23.3)^3$$

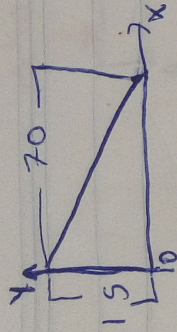
$$= 29.513 \text{ cm}^2 (64 \text{ cm}^2 - 186.4 \text{ cm}^2 + 542.89 \text{ cm}^2)$$

$$= 29.513 \text{ cm}^2 (420.49 \text{ cm}^2)$$

$$\bar{I}_y = 12,409.921 \text{ cm}^4$$

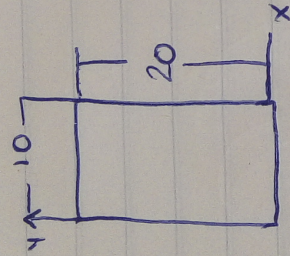
$$\bar{I}_y = 23,412.367 \text{ cm}^4$$





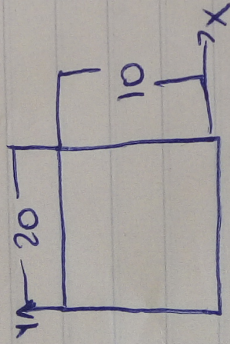
$$\bar{I}_x = \frac{70 \text{ cm} (15 \text{ cm})^3}{36} = 6,562 \cdot 50 \text{ cm}^4$$

$$\bar{I}_y = \frac{(70 \text{ cm})^3 15 \text{ cm}}{36} = 142,916 \cdot 66 \text{ cm}^4$$



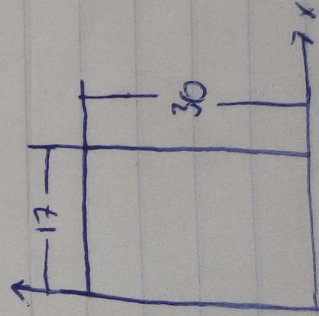
$$\bar{I}_x = \frac{10 \text{ cm} (20 \text{ cm})^3}{12} = 6,666 \cdot 66 \text{ cm}^4$$

$$\bar{I}_y = \frac{(10 \text{ cm})^3 20 \text{ cm}}{12} = 1666 \cdot 66 \text{ cm}^4$$



$$\bar{I}_x = \frac{20 \text{ cm} (10 \text{ cm})^3}{12} = 1,666 \cdot 666 \text{ cm}^4$$

$$\bar{I}_y = \frac{(20 \text{ cm})^3 10 \text{ cm}}{12} = 6,666 \cdot 66 \text{ cm}^4$$



$$\bar{I}_x = \frac{17 \text{ cm} (30 \text{ cm})^3}{12} = 38,250 \text{ cm}^4$$

$$\bar{I}_y = \frac{(17 \text{ cm})^3 30 \text{ cm}}{12} = 12,282 \cdot 50 \text{ cm}^4$$