



UNIVERSIDAD DEL SURESTE  
Campus Comitán  
Licenciatura de Medicina Humana

Tema: Mapa Mental Equilibrio Tubular

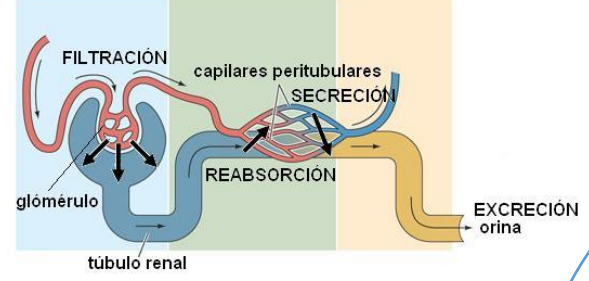
Alumno: Jeferson Enrique Ogaldes Norio

Semestre: 2° Grupo: C

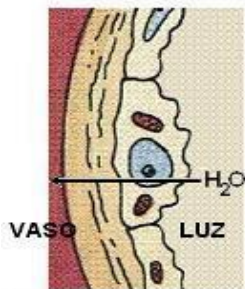
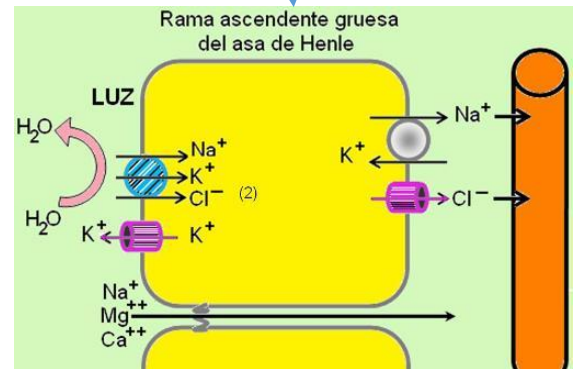
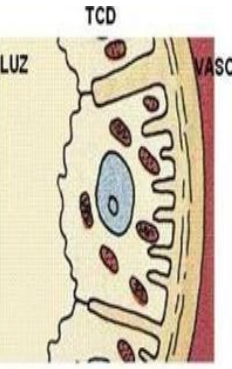
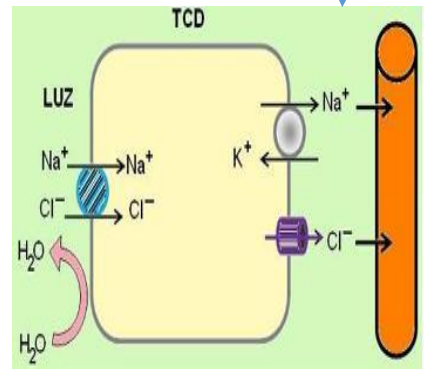
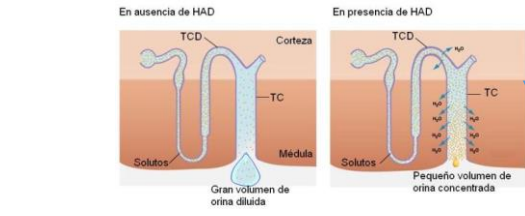
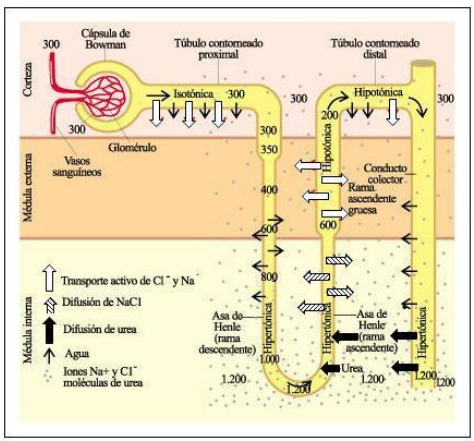
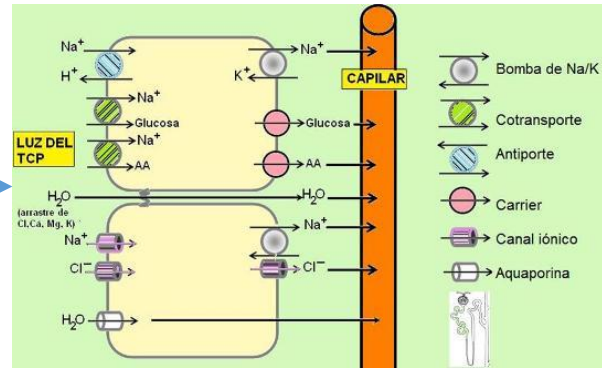
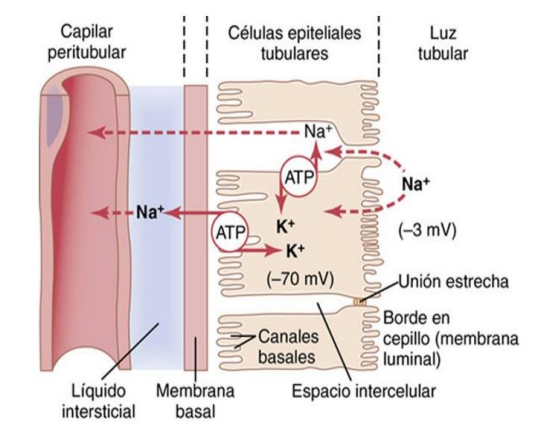
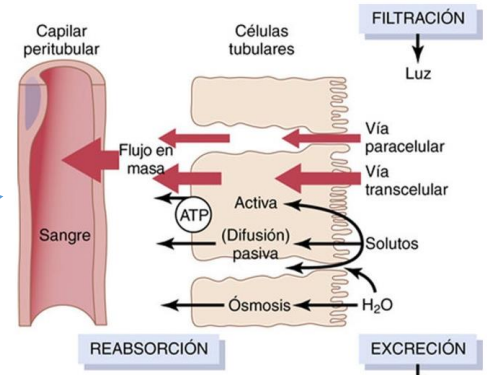
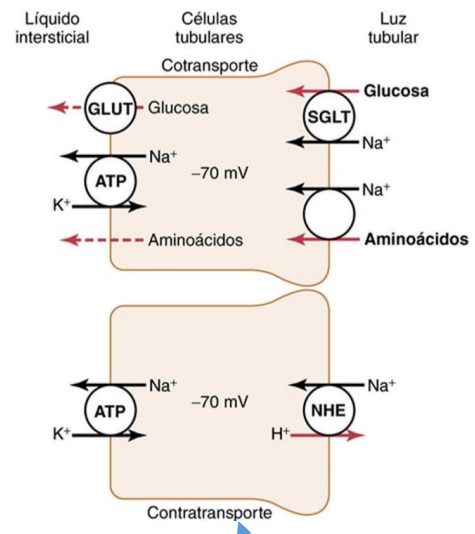
Materia: Fisiología

Docente: Daniel López Castro

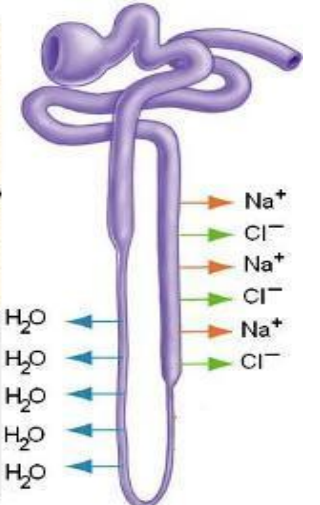
# EQUILIBRIO TUBULAR



$$\text{FILTRACIÓN} - \text{REABSORCIÓN} + \text{SECRECIÓN} = \text{EXCRECIÓN}$$



**Rama descendente delgada del asa de Henle**  
 - Reabsorción de agua  
 - Impemeable a solutos.



## BIBLIOGRAFÍA

Hall, J., 2016. Guyton y Hall: tratado de fisiología medica. 13th ed. Elsevier, pp.1557-1706.