

WORKBOOK

Rosa Hernandez
Luz Esmeralda.

Wednesday 30th March

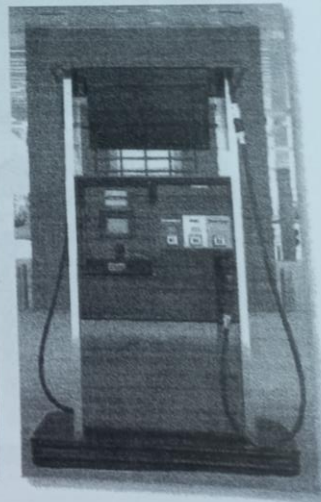
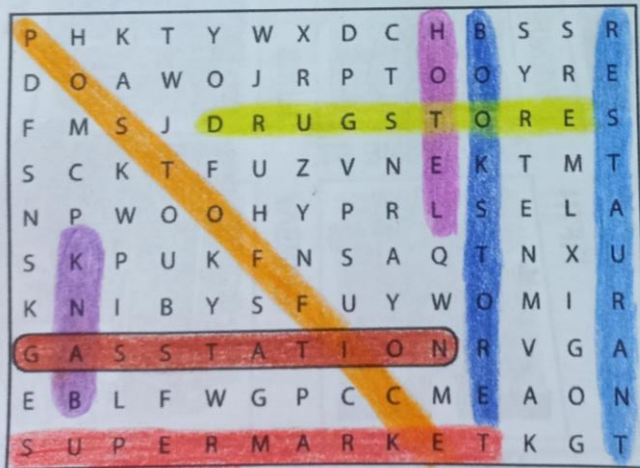
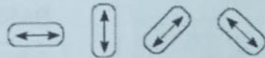
1 Places

A Complete these sentences with the correct places.
Write one letter on each line.

1. We need gasoline for the car. Is there a gas station near here?
2. I'm going to go to the bank. I need some traveler's checks.
3. I work at a bookstore. I love books, so it's a great job.
4. Are you going to the post office? I need some stamps.
5. We don't have anything for dinner. Let's buy some food at the supermarket.
6. Tomorrow we're going to go to Paris for five days. We're going to stay at an expensive hotel.
7. I have a stomachache. Can you buy some antacid at the drugstore?
8. Let's go out for lunch. There's a great Mexican restaurant downtown.

Arriba
March 30th

B Find and circle the places in part A in the puzzle.



Wednesday 31st March

Rosa Hernandez Lopez Esmeralda

2 Look at the map. Complete the sentences with the prepositions in the box.

<input type="checkbox"/> across from	<input type="checkbox"/> between	<input checked="" type="checkbox"/> on
<input type="checkbox"/> behind	<input type="checkbox"/> next to	<input type="checkbox"/> on the corner of
<i>enfrente de</i>	<i>entre</i>	<i>en la esquina</i>

Muchas gracias

- The English school is on Catherine Street.
- The hospital is behind the hotel.
- The Mexican restaurant is on the corner of Beatrice Street and Fourth Avenue.
- The bank is on Barbara Street, between Sixth and Seventh Avenues.
- The bookstore is next to the English school.
- The coffee shop is across from the park.

