

Carlos Enrique Maldonado Juarez # Actividad 1

WORKBOOK

1

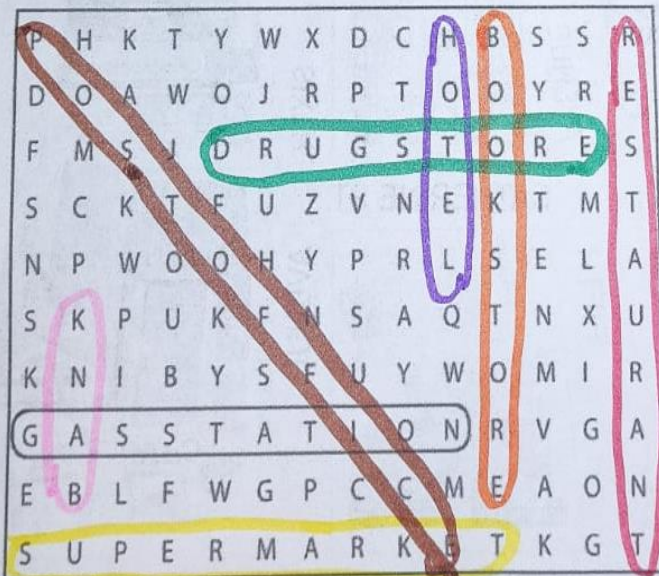
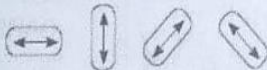
Places

A Complete these sentences with the correct places.
Write one letter on each line.

~~AUTOMÓVIL~~

1. We need gasoline for the car. Is there a g a s s t a t i o n near here?
2. I'm going to go to the B a n k. I need some traveler's checks.
3. I work at a b o o k s t o r e. I love books, so it's a great job.
4. Are you going to the p o s t o f f i c e? I need some stamps.
5. We don't have anything for dinner. Let's buy some food at the s u p e r m a r k e t.
6. Tomorrow we're going to go to Paris for five days. We're going to stay at an expensive H o t e l.
7. I have a stomachache. Can you buy some antacid at the d r u g s t o r e?
8. Let's go out for lunch. There's a great Mexican r e s t a u r a n t downtown.

B Find and circle the places in part A in the puzzle.



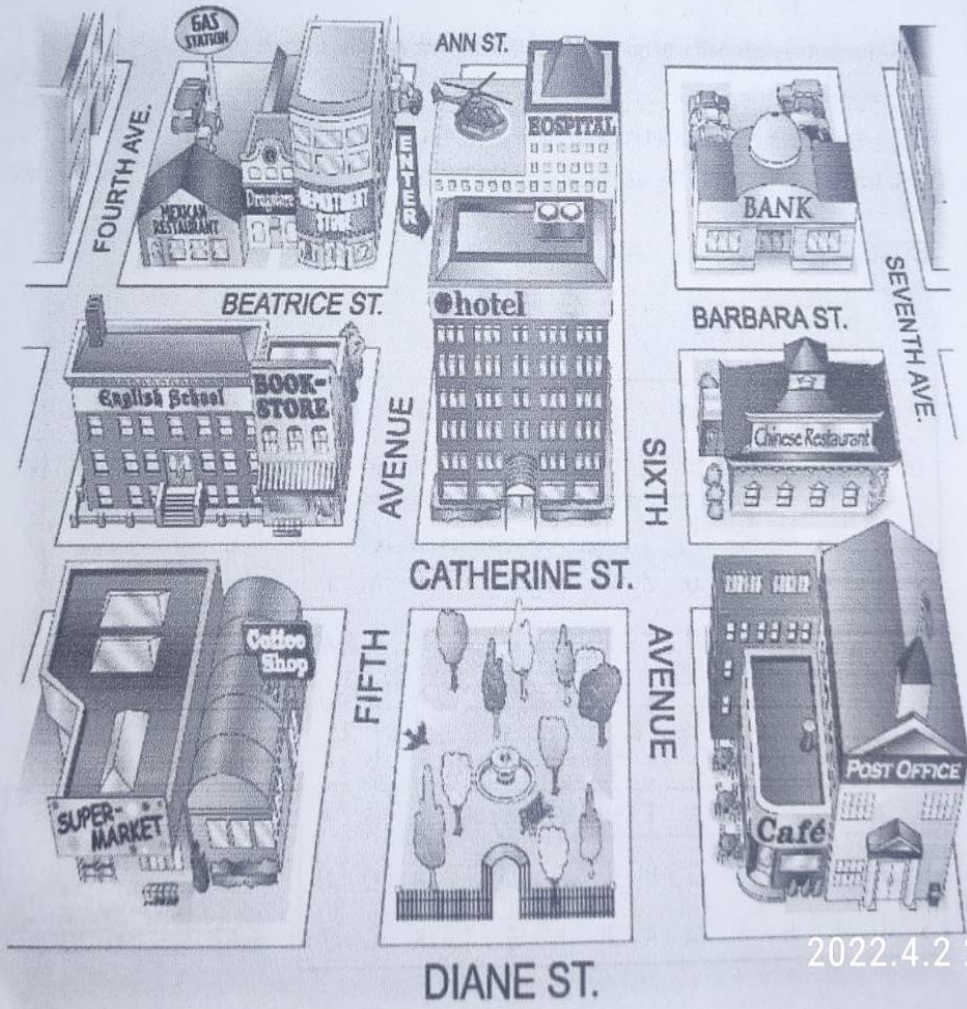
La biblioteca H. 5000

2 Look at the map. Complete the sentences with the prepositions in the box.

- across from between on
- behind next to on the corner of

AUTOMOBILE

1. The English school is on Catherine Street.
2. The hospital is behind the hotel.
3. The Mexican restaurant is on the corner of Beatrice Street and Fourth Avenue.
4. The bank is on Barbara Street, between Sixth and Seventh Avenues.
5. The bookstore is next to the English school.
6. The coffee shop is across from the park.



2022.4.2 22:4