



ROXANA GERALDINE HERNANDEZ GALVEZ

ARQ. PEDRO ALBERTO GARCIA LOPEZ

ANALISIS DE ESTRUCTURAS

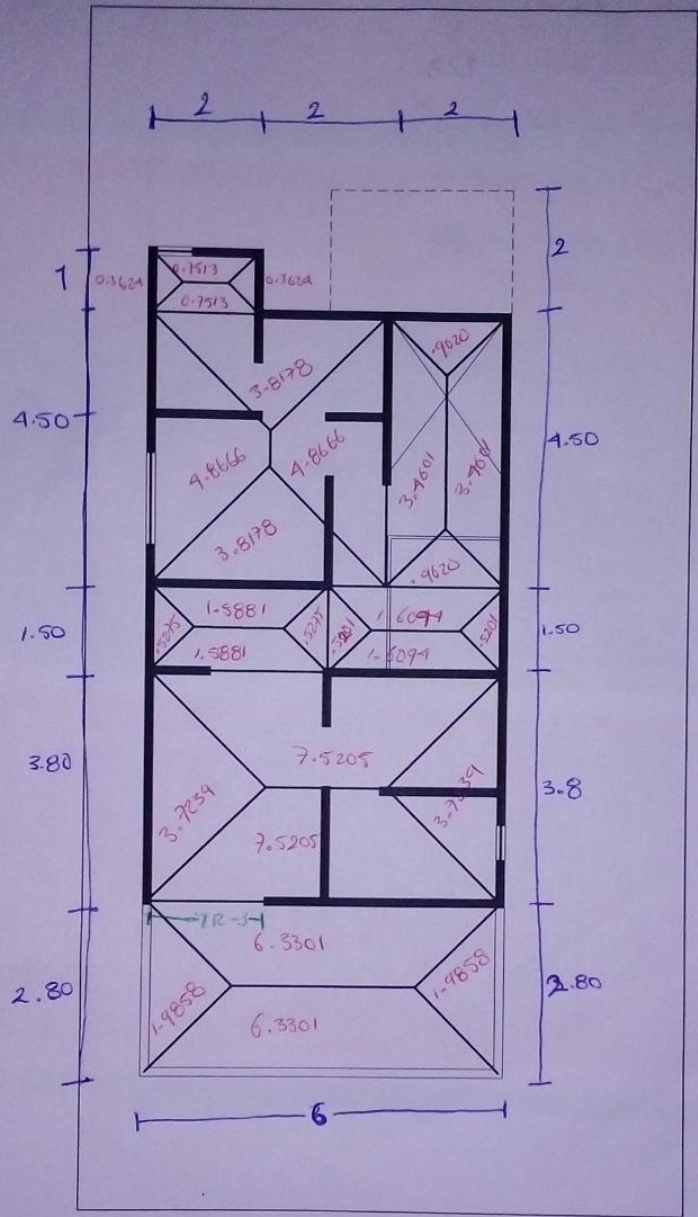
CARGAS VIVAS, MUERTAS Y ACCIDENTALES

5° CUATRIMESTRE

LAR-ARQUITECTURA "A"

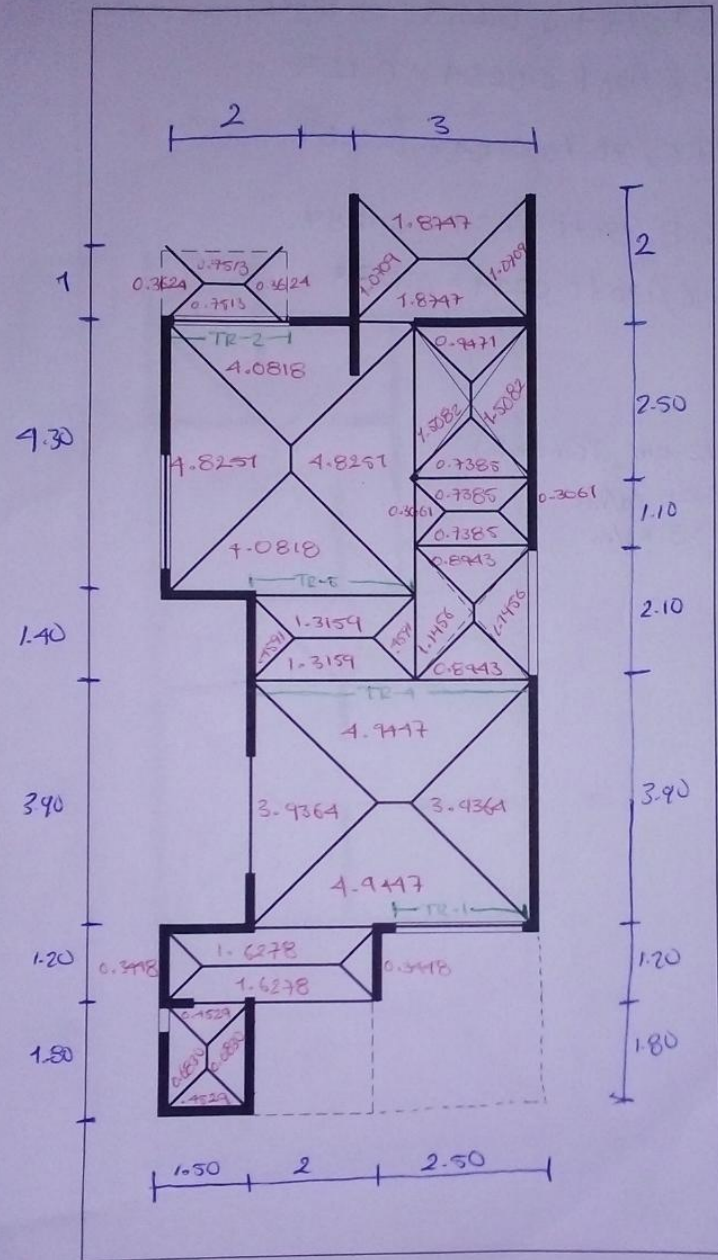
COMITAN DE DOMINGUEZ, CHIAPAS A 21 ENERO 2022

① Areas Tributarias



Planta alta

② Areas Tributarias



Planta baja

② Peralte

$$TR1 \quad 16.8/170 + 0.0254 = 0.1242$$

$$TR2 \quad 16.6/170 + 0.0254 = 0.123$$

$$TR3 \quad 17.6/170 + 0.0254 = 0.1289$$

$$TR4 \quad 16.8/170 + 0.0254 = 0.1289$$

$$TR5 \quad 16.6/170 + 0.0254 = 0.1289$$

③

losa 12 cm (concreto)

$$E.P = 628 \text{ kg/m}^2$$

$$A2 = 658 \text{ kg/m}^2$$