

UNIVERSIDAD DEL SURESTE



Catedrático: Eduardo Enrique
Arreola Jiménez

Por: Ximena Aquino Hernández

INGLÉS II

Tapachula, Chiapas a 02 de Abril del
2022

WORKBOOK

Places

A Complete these sentences with the correct places.

Write one letter on each line.

1. We need gasoline for the car. Is there a

g a s s t a t i o n near here?

2. I'm going to go to the b a n k. I need some traveler's checks.

3. I work at a BOOKSTORE. I love books, so it's a great job.

4. Are you going to the post office? I need some stamps.

5. We don't have anything for dinner. Let's buy some food at the

Supermarket.

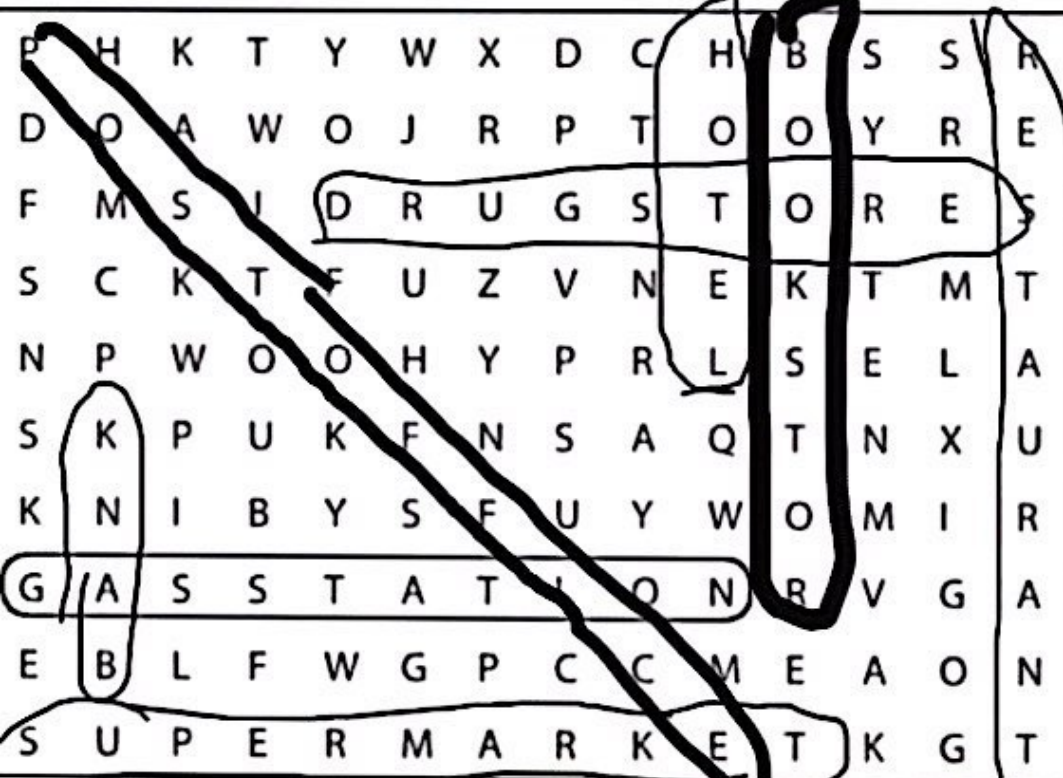
6. Tomorrow we're going to go to Paris for five days. We're going to stay

at an expensive hotel.

7. I have a stomachache. Can you buy some antacid at the drugstore?

8. Let's go out for lunch. There's a great Mexican restaurant downtown.

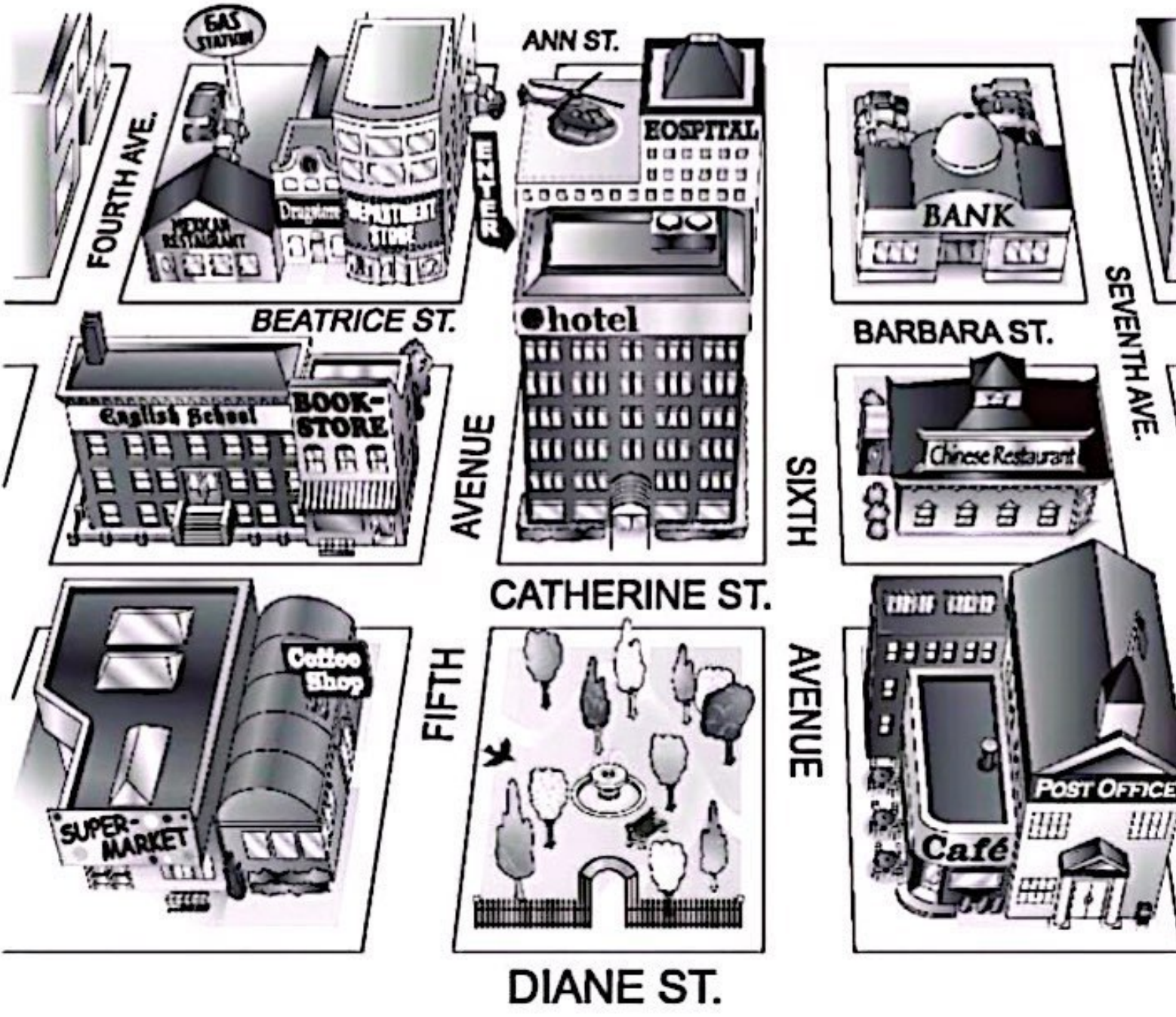
B Find and circle the places in part A in the puzzle.



Look at the map. Complete the sentences with the prepositions in the box.

<input type="checkbox"/> across from	<input type="checkbox"/> between	<input checked="" type="checkbox"/> on
<input checked="" type="checkbox"/> behind	<input type="checkbox"/> next to	<input type="checkbox"/> on the corner of

- The English school is on Catherine Street.
- The hospital is **behind** the hotel.
- The Mexican restaurant is **between** Beatrice Street and Fourth Avenue.
- The bank is on Barbara Street, **across from** Sixth and Seventh Avenues.
- The bookstore is **next to** the English school.
- The coffee shop is **on the corner of** the park.



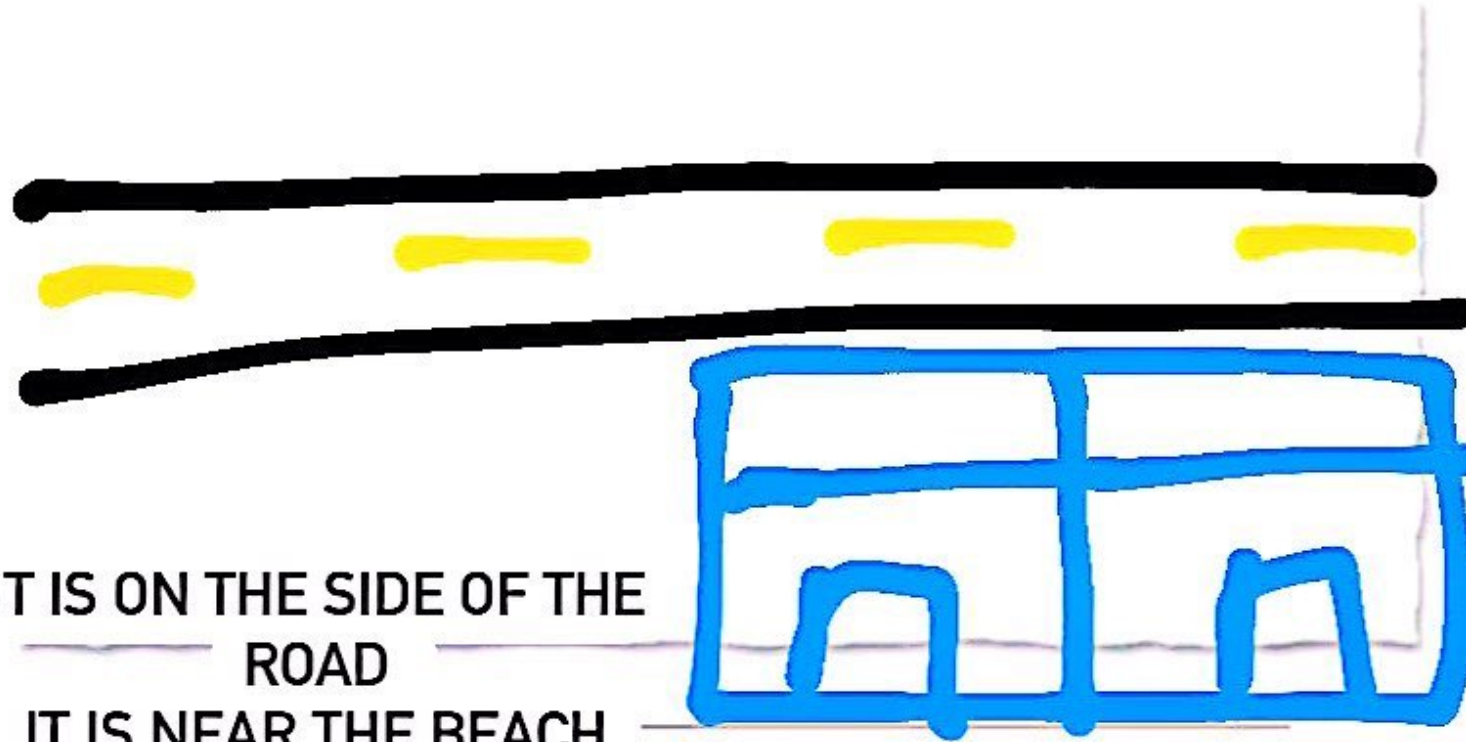
3

Where is it?

A Look at the map in Exercise 2 again. Where is each place? Write two sentences.

1. bookstore The bookstore is on the corner of Catherine Street
and Fifth Avenue. It's next to the English school
2. supermarket **the super market is next to a cafeteria**
3. department store **the department store is behind the book store**
4. gas station **the gas station is around the corner from the hospital**
5. Chinese restaurant **the chinese restaurant is next to the hotel**
6. hotel **the hotel is across from the hospital**
7. post office **the post office is next to the cafeteria**
8. drugstore **the drugstore is behind the Spanish school**

B Where is your school? Draw a map. Then write two sentences.



IT IS ON THE SIDE OF THE
ROAD
IT IS NEAR THE BEACH

Complete the conversation. Use the sentences and questions in the box.

Next to the café?

Is there a post office around here?

Thanks a lot.

Excuse me. Can you help me?

Where on Diane Street?

Rachel: Excuse me. Can you help me?

Man: Sure.

Rachel: Is there a post office around here?

Man: Yes, there is. It's on Diane Street.

Rachel: Where on Diane Street?

Man: It's on the corner of Diane Street and Seventh Avenue.

Rachel: Next to the café?

Man: Yes, that's right. It's right next to the café.

Rachel: Thanks a lot

Man: You're welcome.



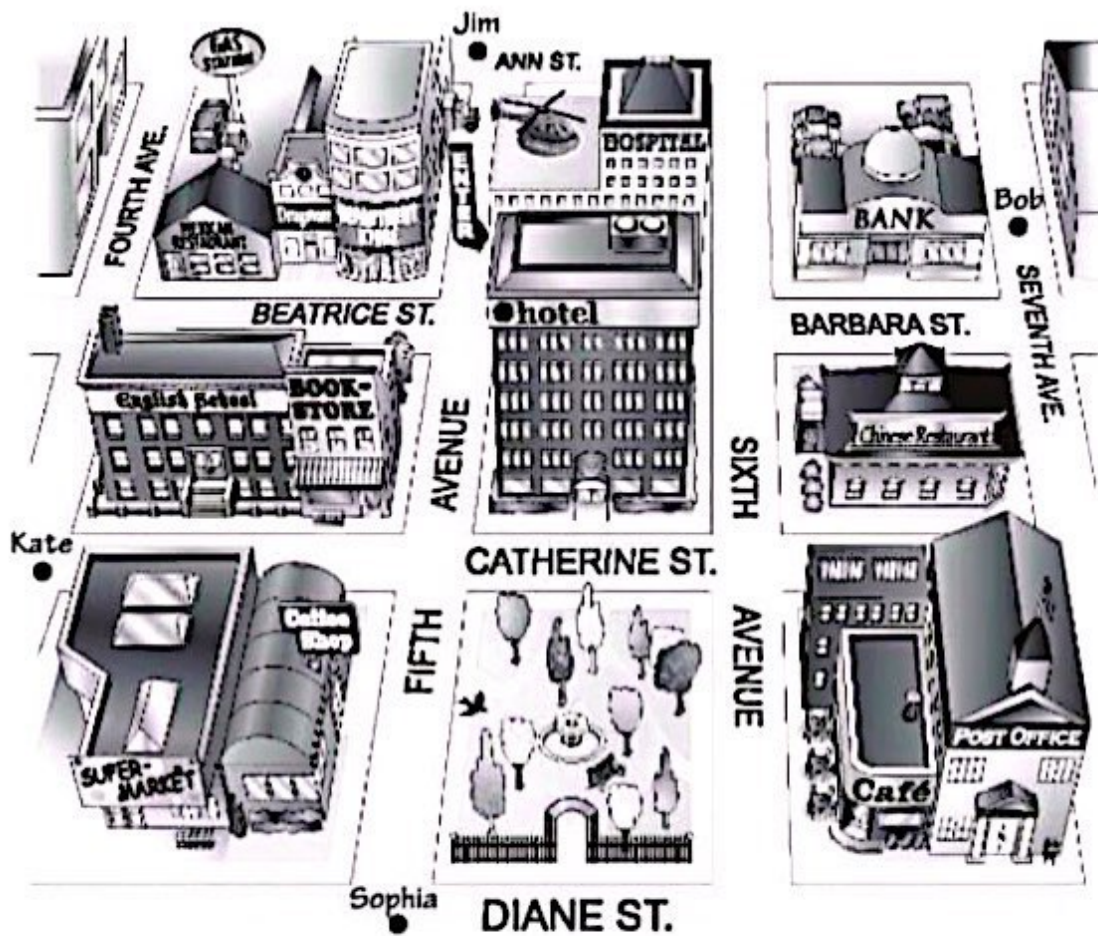
Complete the sentences with the opposites.

1. Don't turn *right* on Fifth Avenue. Turn left .
2. The Waverly Hotel isn't *in front of* the concert hall. It's behind it.
3. Don't walk *down* Columbus Avenue. Walk run Columbus Avenue.
4. The museum isn't on the *left*. It's on the right .
5. The Empire State Building is *far* from here, but Central Park is near here.
You can walk there.

Look at the map. Give these people directions. Use the phrases and sentences in the box.

Walk up/Go up . . . Street/Avenue.
 Turn left on . . . Street/Avenue.
 Walk to . . . Street/Avenue.

Walk down/Go down . . . Street/Avenue.
 Turn right on . . . Street/Avenue.
 It's on the left/right.



1. Sophia is looking for the Mexican restaurant.

Go up Fifth Avenue. Turn left on Beatrice Street.

Walk to Fourth Avenue. It's on the right.

2. Kate is looking for the post office.

I walked on CATALINA ST. turn right on
SIXTH AVENUE and get on DIANE ST.

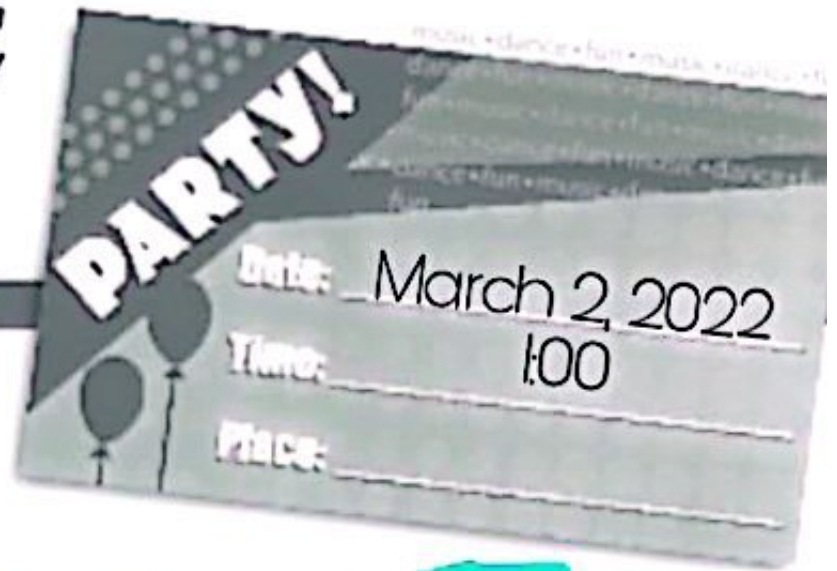
3. Bob is looking for the supermarket.

get off at SEVENTH AVENUE and
turn right onto DIANE ST.

4. Jim is looking for the bank.

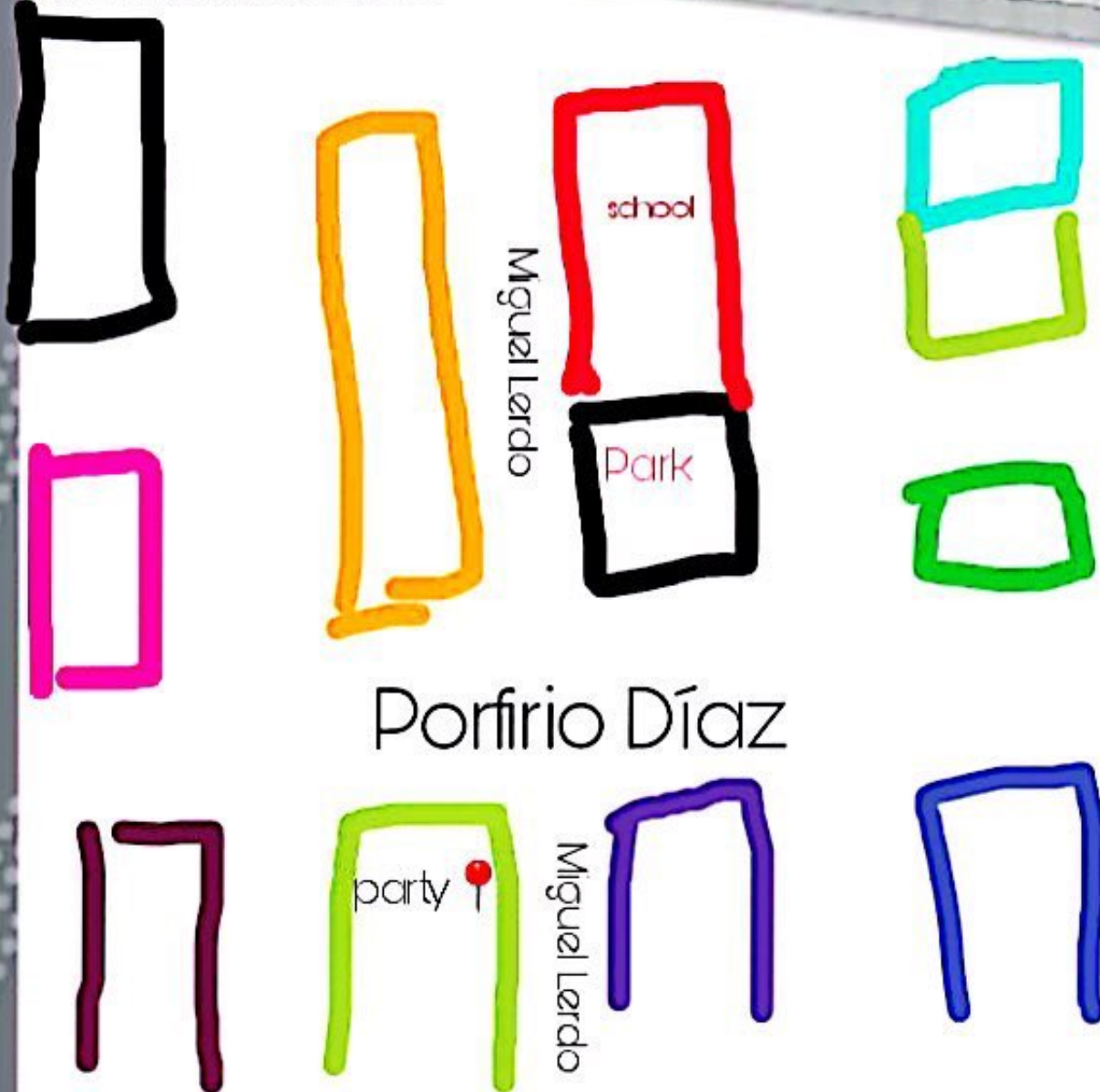
walk on FIFTH AVENUE, turn left on CATALINA ST. And go up
on SEXTA AVENIDA, turn right on CALLE BARBARA

Imagine you're going to have a party. Complete the invitation. Then draw a map and write directions to the party from your school.



Map to the party

Entrance, Colonia Los Reyes



Directions to the party

Start at the school. Then

It begins at the entrance of the kings and continues until it reaches Miguel Lerdo street, on that street it turns until it reaches Porfirio Díaz street, crosses and the party is on the corner.

BIBLIOGRAFÍA

**UDS (2021). ENGLISH BOOK LEVEL 2.
TAPACHULA, CHIAPAS: EDITORIAL**