



**INSTITUCION: UNIVERSIDAD DEL SURESTE “MATUTINO”**

**ASIGNATURA: INGLES**

**TEMA DEL ENSAYO: PAGINA 74-79**

**DOCENTE: ENRIQUE EDUARDO ARREOLA JIMENEZ**

**GRADO Y GRUPO: SEGUNDO CUATRIMESTRE**

**AUTORES:**

**FATIMA GUADALUPE AGUILAR VAZQUEZ**

**BIBLIOGRAFIA:**

**<file:///C:/Users/copq6/OneDrive/Sicodig/4b28ccf25fb75fd77a90837ce900b7d4-LC-LNU206.pdf>**

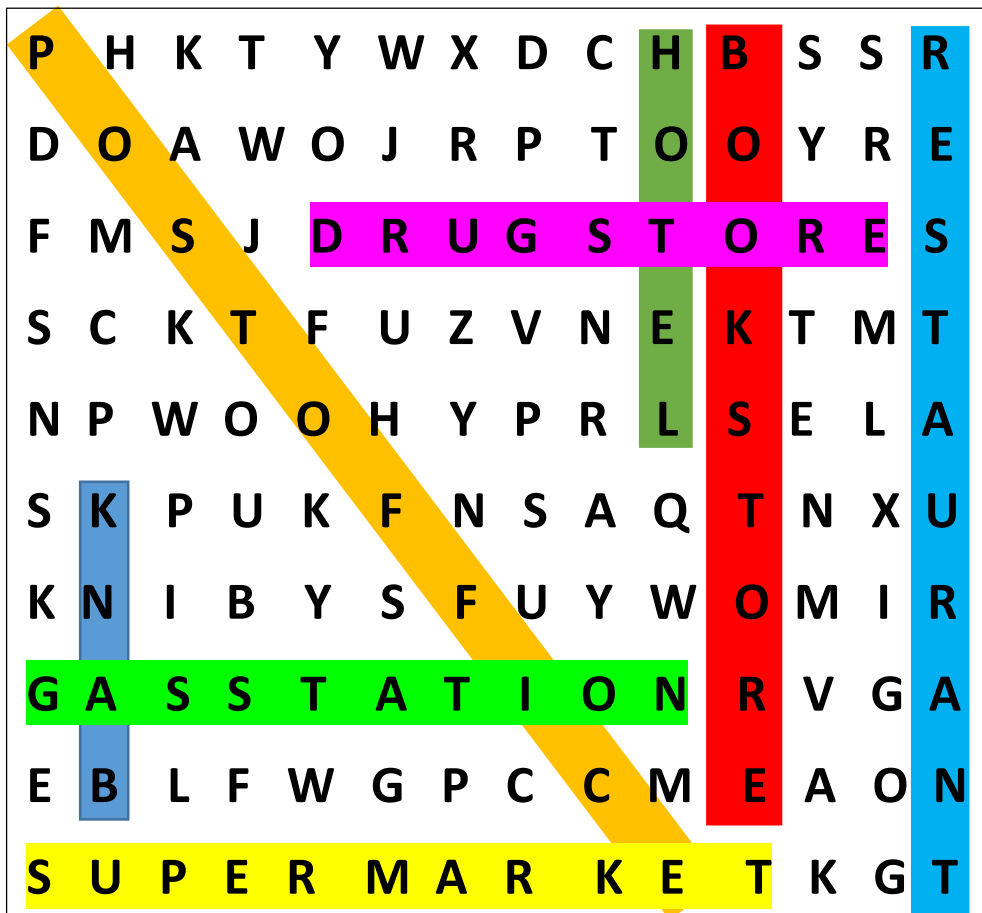
**LUGAR Y FECHA: TAPACHULA, CHIAPAS; 02 DE ABRIL DE 2022**

## WORKBOOK.

A. Complete these sentences with the correct places. Write one letter on each line.

1. We need gasoline for the car. Is there a **GAS STATION** near here?
2. I'm going to go to the **BANK**. I need some traveler's checks.
3. I work at a **BOOKSTORE**. I love books, so it's a great job.
4. Are you going to the **POST OFFICE**? I need some stamps.
5. We don't have anything for dinner. Let's buy some food at the **SUPERMARKET**.
6. Tomorrow we're going to go to Paris for five days. We're going to stay at an expensive **HOTEL**.
7. I have a stomachache. Can you buy some antacid at the **DRUG STORE**?
8. Let's go out for lunch. There's a great Mexican **RESTAURANT** downtown.

B. Find and circle the places in part A in the puzzle.



**2.** Look at the map. Complete the sentences with the prepositions in the box.

1. The English school is **ON** Catherine Street.
2. The hospital is **ACROSS FROM** the hotel.
3. The Mexican restaurant is **ON THE CORNER OF** Beatrice Street and Fourth Avenue.
4. The bank is on Barbara Street, **ON SIXTH** and Seventh Avenues.
5. The bookstore is **BETWEEN** the English school.
6. The coffee shop is **NEXT TO** the park.

**3. Where is it?**

**A.** Look at the map in Exercise 2 again. Where is each place? Write two sentences.

1. Bookstore: **The bookstore is on the corner of Catherine Street and Fifth Avenue. It's next to the English School.**
2. Supermarket: **The supermarket is behind the school and the bookstore.**
3. Department Store: **The department store is located on Beatrice St.**
4. Gas Station: **The gas station is on Beatrice St.**
5. Chinese Restaurant: **The Chinese restaurant is behind the bank.**
6. Hotel: **The hotel is on fifth avenue and Catherine St.**
7. Post Office: **The post office is located next to the cafeteria.**
8. Drugstore: **The drugstore is located on Beatrice St.**

4. Complete the conversation. Use the sentences and questions in the box.

Rachel. Excuse me. Can you help me?

Man. Sure.

Rachel. Is there a post office around here?

Man. Yes, there is. It's on Diane Street.

Rachel. Where on Diane Street.

Man. It's on the corner of Diane Street and Seventh Avenue.

Rachel. Next to the café?

Man. Yes, that's right. It's right next to the café.

Rachel. Thanks a lot.

Man. You're welcome.

5. Complete the sentences with the opposites.

1. Don't turn right on Fifth Avenue. Turn **left**
2. The Waverly Hotel isn't in front of the concert hall. It's **NEXT TO** it.
3. Don't walk down Columbus Avenue. **Walk ACROSS FROM** Columbus Avenue.
4. The museum isn't on the left. It's on the **ON**
5. The Empire State Building is far from here, but Central Park is **BETWEEN** here. You can walk there.

**6 Look at the map. Give these people directions. Use the phrases and sentences in the box.**

**1. Sophia is looking for the Mexican Restaurant.**

**Go up fifth avenue. Turn left on Beatrice Street.**

**Walk to Fourth Avenue. It's on the right.**

**2. Kate is looking for the post office.**

**Walk turn left on walk to coffee.**

**3. Bob is looking for the supermarket.**

**Walk ve turn right.**