



Universidad del sureste

Lic. En medicina veterinaria y zootecnia

Andrés Elorza Maldonado

2do Cuatrimestre

Inglés II

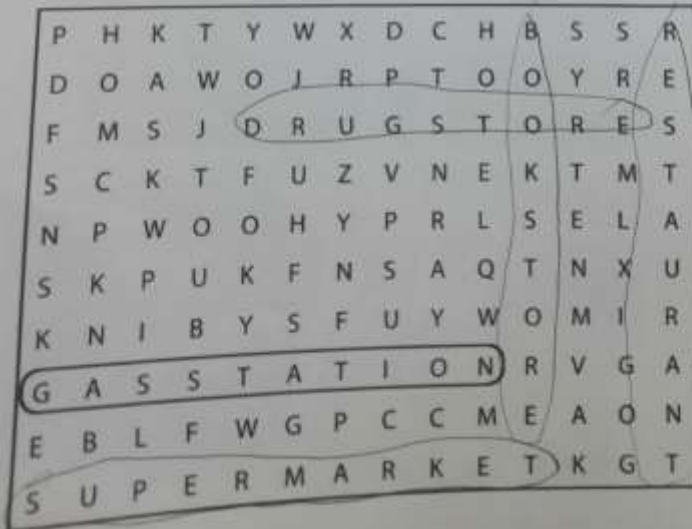
# WORKBOOK

## 1 Places

**A** Complete these sentences with the correct places.  
Write one letter on each line.

- We need gasoline for the car. Is there a gas station near here?
- I'm going to go to the bank. I need some traveler's checks.
- I work at a bookstore. I love books, so it's a great job.
- Are you going to the post office? I need some stamps.
- We don't have anything for dinner. Let's buy some food at the supermarket.
- Tomorrow we're going to go to Paris for five days. We're going to stay at an expensive hotel.
- I have a stomachache. Can you buy some antacid at the drugstore?
- Let's go out for lunch. There's a great Mexican restaurant downtown.

**B** Find and circle the places in part A in the puzzle.



2

Look at the map. Complete the sentences with the prepositions in the box.

- across from
- behind
- between
- next to
- on
- on the corner of

1. The English school is on Catherine Street.
2. The hospital is behind the hotel.
3. The Mexican restaurant is on the corner Beatrice Street and Fourth Avenue.
4. The bank is on Barbara Street, between Sixth and Seventh Avenues.
5. The bookstore is next to the English school.
6. The coffee shop is across from the park.

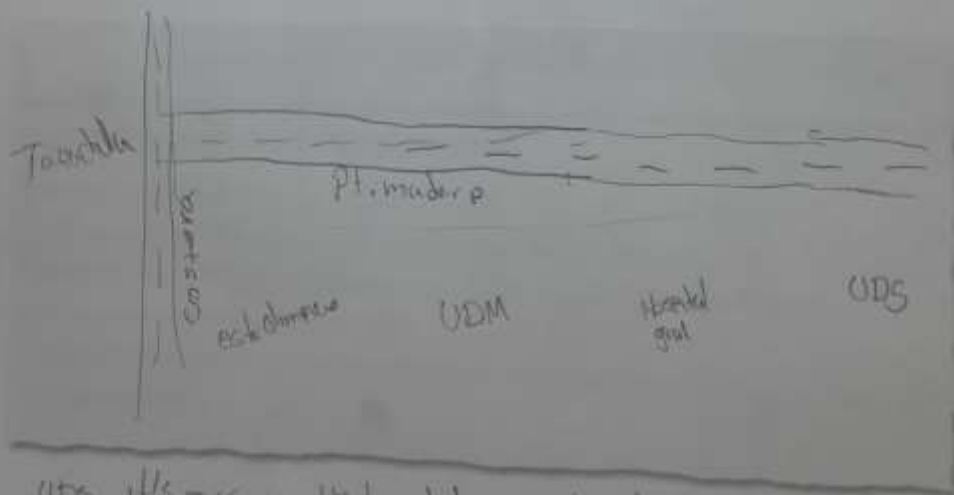


3 Where is it?

A Look at the map in Exercise 2 again. Where is each place? Write two sentences.

1. bookstore The bookstore is on the corner of Catherine Street and Fifth Avenue. It's next to the English school.
2. supermarket The supermarket is next to coffee shop. It's on the corner of dance street.
3. department store The department store is behind the bookstore and next to the drugstore.
4. gas station The gas station is behind the restaurant on fourth ave.
5. Chinese restaurant Chinese restaurant is on Catherine St. and behind of post office.
6. hotel The hotel is on Catherine St. and across from Chinese restaurant.
7. post office The post office is next to the coffee and on dance st.
8. drugstore The drugstore is between the Mexican restaurant and the bookstore.

B Where is your school? Draw a map. Then write two sentences.



UDS is passing the hospital on the Pt. Prud

4 Complete the conversation. Use the sentences and questions in the box.

Next to the café?

Is there a post office around here?

Thanks a lot.

Excuse me. Can you help me?

Where on Diane Street?

Rachel: Excuse me. Can you help me?

Man: Sure.

Rachel: Is there a post office around here?

Man: Yes, there is. It's on Diane Street.

Rachel: Where on Diane Street?

Man: It's on the corner of Diane Street and Seventh Avenue.

Rachel: Next to the café?

Man: Yes, that's right. It's right next to the café.

Rachel: Thank a lot.

Man: You're welcome.



5 Complete the sentences with the opposites.

1. Don't turn *right* on Fifth Avenue. Turn left.
2. The Waverly Hotel isn't *in front of* the concert hall. It's behind it.
3. Don't walk *down* Columbus Avenue. Walk up Columbus Avenue.
4. The museum isn't on the *left*. It's on the right.
5. The Empire State Building is *far from* here, but Central Park is near here. You can walk there.

6

Look at the map. Give these people directions. Use the phrases and sentences in the box.

Walk up/Go up . . . Street/Avenue.  
Turn left on . . . Street/Avenue.  
Walk to . . . Street/Avenue.

Walk down/Go down . . . Street/Avenue.  
Turn right on . . . Street/Avenue.  
It's on the left/right.



1. Sophia is looking for the Mexican restaurant.

Go up Fifth Avenue. Turn left on Beatrice Street.

Walk to Fourth Avenue. It's on the right.

2. Kate is looking for the post office.

Turn right on Diane St. It's after Sixth Avenue.

3. Bob is looking for the supermarket.

Turn left on Diane St. Looking for Fifth Avenue.

4. Jim is looking for the bank.

Walk up on Sixth Avenue, then turn right on Barbara St  
and there it is between Sixth Ave. and Seventh Ave.