

TOPOGRAFÍA

LEVANTAMIENTO ARQUITECTONICO



ROXANA GERALDINE HERNANDEZ GALVEZ

ARQ. PEDRO ALBERTO GARCIA LOPEZ

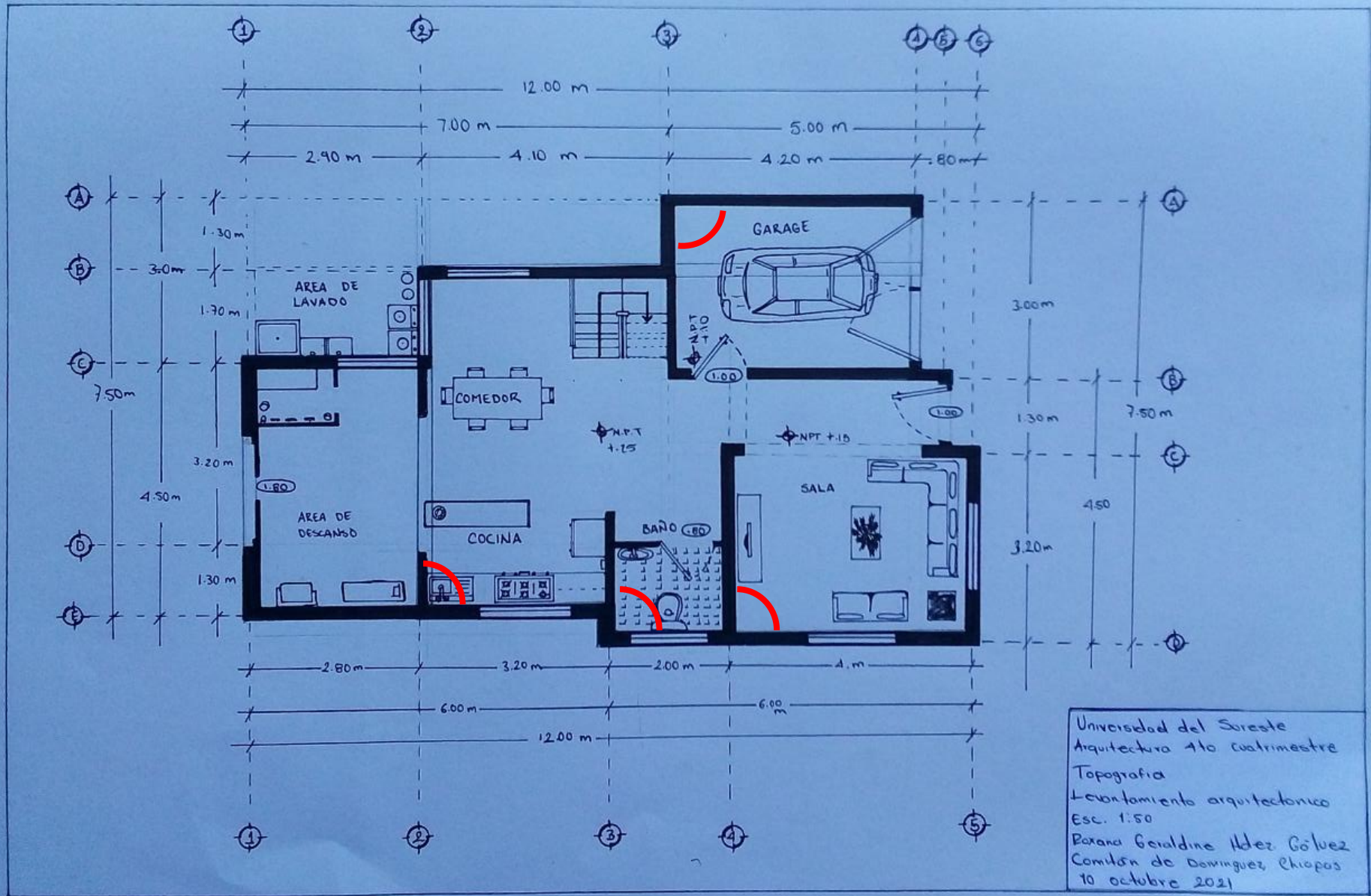
TOPOGRAFIA

LEVANTAMIENTO ARQUITECTONICO

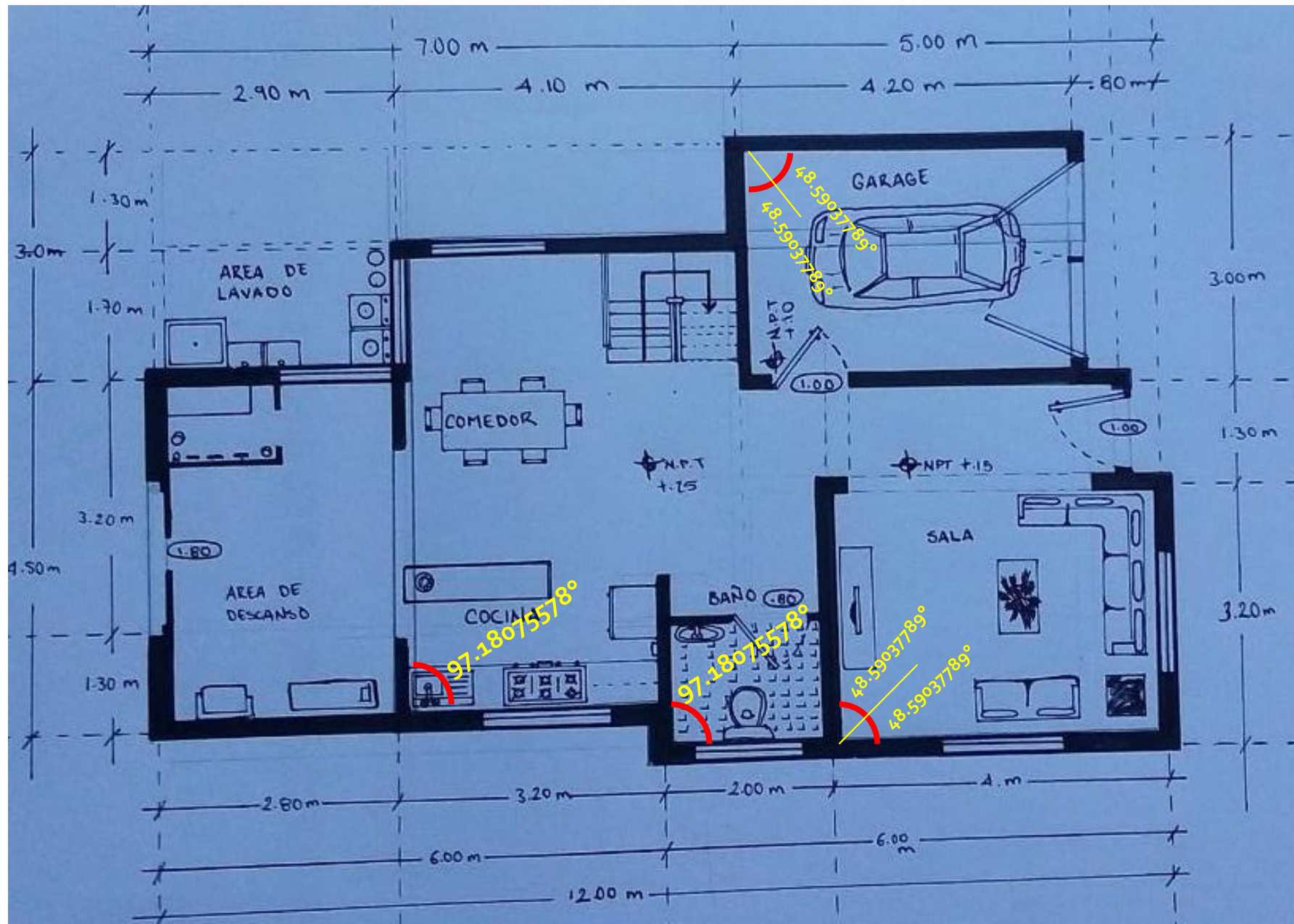
4° CUATRIMESTRE

LAR04EMC0120-A

COMITAN DE DOMINGUEZ, CHIAPAS A 10 OCTUBRE 2021



Universidad del Sur este
 Arquitectura 4to cuatrimestre
 Topografía
 Levantamiento arquitectónico
 Esc. 1:50
 Roxana Geraldine Hdez Gómez
 Comilón de Dominguez, Chiapas
 10 octubre 2021



CALCULOS

Sala (4 x 3.20)

Hipotenusa:
1.50 m

$$\text{Sen } \frac{\theta}{2} = \frac{dh/2}{1m}$$

$$\text{Sen } \frac{\theta}{2} = \frac{1.5/2}{1m}$$

$$\text{Sen } \frac{\theta}{2} = \frac{0.75m}{1m}$$

$$\text{Sen } \frac{\theta}{2} = 0.75m$$

$$\frac{\theta}{2} = \text{Sen}^{-1} 0.75m$$

$$\frac{\theta}{2} = 48.59037789$$

$$\theta = 97.18075578$$

Baño (2 x 2.30)

Hipotenusa
1.50 m

$$\text{Sen } \frac{\theta}{2} = \frac{db/2}{1m}$$

$$\text{Sen } \frac{\theta}{2} = \frac{1.5m/2}{1m}$$

$$\text{Sen } \frac{\theta}{2} = \frac{0.75m}{1m}$$

$$\text{Sen } \frac{\theta}{2} = 0.75m$$

$$\frac{\theta}{2} = \text{Sen}^{-1} 0.75m$$

$$\frac{\theta}{2} = 48.59037789$$

$$\theta = 97.18075578$$

Cochera (4.20 x 3)

Hipotenusa
1.50 m

$$\text{Sen } \frac{\theta}{2} = \frac{db/2}{1m}$$

$$\text{Sen } \frac{\theta}{2} = \frac{1.5/2}{1m}$$

$$\text{Sen } \frac{\theta}{2} = \frac{0.75m}{1m}$$

$$\text{Sen } \frac{\theta}{2} = 0.75m$$

$$\frac{\theta}{2} = \text{Sen}^{-1} 0.75m$$

$$\frac{\theta}{2} = 48.59037789$$

$$\theta = 97.18075578$$

Cocina (3 x 3.20)

Hipotenusa
1.50 m

$$\text{Sen } \frac{\theta}{2} = \frac{db/2}{1m}$$

$$\text{Sen } \frac{\theta}{2} = \frac{1.5m/2}{1m}$$

$$\text{Sen } \frac{\theta}{2} = \frac{0.75m}{1m}$$

$$\text{Sen } \frac{\theta}{2} = 0.75m$$

$$\frac{\theta}{2} = \text{Sen}^{-1} 0.75m$$

$$\frac{\theta}{2} = 48.59037789$$

$$\theta = 97.18075578$$