



Nombre del Alumno: Mireya Guadalupe Flores Jiménez

Nombre del Profesor: Jorge Enrique Albores Aguilar

Materia: Estadística

Grado: 5to

Grupo: A



Periodo	Registro	Porcentaje	Grados
Enero	300	14.56%	52.43°
Febrero	150	7.28%	26.21°
Marzo	400	19.41%	69.90°
Abril	250	12.14%	43.69°
Mayo	300	14.56%	52.43°
Junio	200	9.71%	34.95°
Julio	180	8.74%	31.46°
Agosto	280	18.60%	48.93°
Total	2060	100%	360°

Mireya Escudalope Flores Jimenez

Enero $2060 = 100\%$
 $300 = 14.86\%$

febrero $2060 = 100\%$
 $150 = 7.28\%$

Marzo $2060 = 100\%$
 $400 = 7.28$

abril $2060 = 100\%$
 $250 = 12.13\%$

Mayo $2060 = 100\%$
 $300 = 14.56$

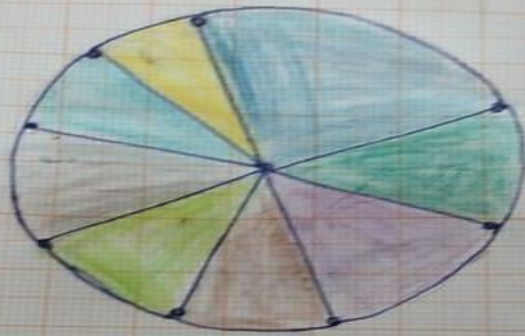
Junio $2060 = 100\%$
 $200 = 9.70\%$

Julio $2060 = 100\%$
 $180 = 8.73$

Agosto $2060 = 100\%$
 $280 = 13.59\%$

Mireya Guadalupe Flores Jiménez

Mirya Ede Flores Jimenez



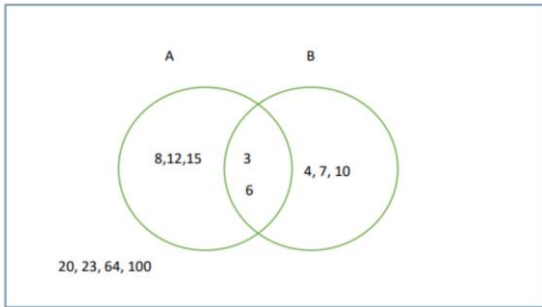
Enero
Febrero
Marzo
Abril



Mayo
Junio
Julio
Agosto

DIAGRAMAS DE VENN

U



Ejercicio 1

$B - A$
 $B - A = \{4, 7, 10\}$

Conjunto A
 $A = \{3, 6, 8, 12, 15\}$

Conjunto B
 $B = \{3, 4, 6, 7, 10\}$

$A \cup B$
 $A \cup B = \{3, 4, 6, 7, 8, 10, 12, 15\}$

$A - B$
 $A - B = \{8, 12, 15\}$

Universo
 $U = \{3, 4, 6, 7, 8, 10, 12, 15, 20, 23, 64, 100\}$

Complemento A
 $A^c = \{4, 7, 10, 20, 23, 64, 100\}$

Complemento B
 $B^c = \{3, 8, 12, 15, 20, 23, 64, 100\}$

Mireya Esc. Flores Jimenez

U



EJERCICIO 2

universo
 $U = \{ \}$
 $[A - B]$
 $n B = \{ 6, 7, 10 \}$
 $[B - A]$
 $B - A = \{ 12, 18 \}$
universo
 $U = \{ 1, 5, 7, 8, 10, 12, 2, 23, 45, 41 \}$

Contenido A
 $A = \{ 1, 5, 7, 8, 10 \}$

Contenido B
 $B = \{ 5, 8, 12, 18 \}$

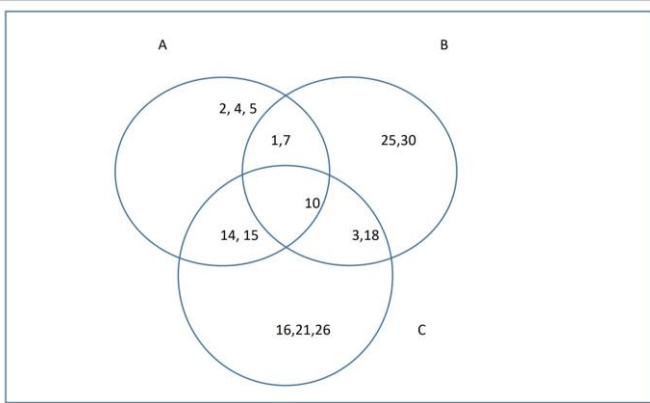
A \cup B
 $A \cup B = \{ 1, 5, 7, 8, 10, 12, 18 \}$

A interseccion B
 $A \cap B = \{ 5, 8 \}$

Complemento A
 $A^c = \{ 12, 18, 2, 23, 45, 41 \}$

Complemento B
 $B^c = \{ 1, 7, 10, 12, 23, 45, 41 \}$

Miriam Guadalupe Flores
Jimenez



Ejercicio 1

$B = A$
 $B - A = \{4, 7, 10\}$

Conjunto A
 $A = \{3, 6, 8, 12, 15\}$

Conjunto B
 $B = \{3, 4, 6, 7, 10\}$

$A \cup B$
 $A \cup B = \{3, 4, 6, 7, 8, 10, 12, 15\}$

$A - B$
 $A - B = \{8, 12, 15\}$

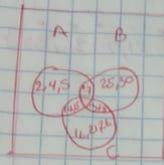
Universo
 $U = \{3, 4, 6, 7, 8, 10, 12, 15, 20, 23, 64, 100\}$

Complemento A
 $A^c = \{4, 7, 10\}$

Complemento B
 $B^c = \{8, 12, 15, 20, 23, 64, 100\}$

Mireya Gr. Flores Jimenez

Ejercicio 3



Conjunto A

$$A = \{1, 2, 3, 4, 5, 7, 10, 14, 15\}$$

Conjunto B

$$B = \{1, 7, 10, 3, 18, 25, 30\}$$

Conjunto C

$$C = \{3, 10, 14, 15, 16, 18, 26, 25\}$$

$A \cup B$

$$A \cup B = \{1, 2, 4, 5, 7, 3, 10, 18, 15, 25, 30\}$$

A interseccion B

$$A \cap B = \{7, 10\}$$

B interseccion C

$$B \cap C = \{3, 10, 18\}$$

A interseccion C

$$A \cap C = \{10, 14, 15\}$$

A menos B

$$A - B = \{2, 4, 5, 14, 15\}$$

B menos C

$$B - C = \{14, 15, 16, 21, 26\}$$

C menos A

$$C - A = \{1, 2, 4, 5, 7\}$$

Maria Guadalupe Flores Jimenez