

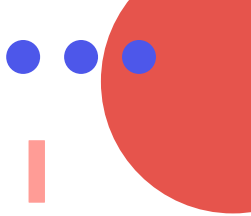


# EL DOLOR





El médico emerge en la prehistoria y su presencia se mantiene a través de la historia hasta nuestros días, en respuesta a tres necesidades fundamentales del hombre: calmar el dolor, atenuar la angustia y prolongar la vida.

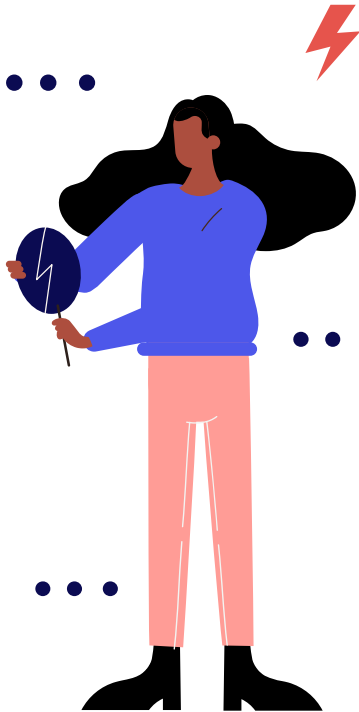
# ¿QUÉ ES EL DOLOR?



El dolor es un fenómeno que en los humanos tiene gran complejidad y que, como la angustia, no sólo ha de ser explicado sino comprendido.



El dolor es una sensopercepción y un afecto displacentero, pero es más que eso



El hombre que sufre dolor es afectado, tiene conciencia de ello y no permanece pasivo; su organismo se dispone a la huida.

Hay en el dolor un elemento motriz, que es "un sentimiento de impotencia para quitárselo de encima"

En la experiencia del dolor intervienen también la **imaginación** y la **atención**

01



02


03



# 01 IMAGINACIÓN

La imaginación hace que el hombre que lo sufre lo interprete como una amenaza y anticipe sus consecuencia.





# ATENCIÓN

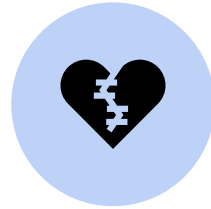
La atención puede fijarse tenazmente en la vivencia dolorosa y el enfermo que sufre dolor no puede olvidarse de él, y es por ello que organiza su vida en torno a él.

The background is a light blue color. It features several abstract geometric elements: a large red circle on the left, a dark blue circle in the upper left, a white circle in the upper center, a blue quarter-circle in the upper right, a black vertical bar in the upper right, a red vertical bar in the upper right, a small blue circle in the upper right, a grid of nine blue circles in the lower left, three white triangles stacked vertically in the lower left, a large dark blue circle in the lower right with a red and a blue diagonal bar passing through it, and a small black circle in the lower right.

# ASPECTOS PSICOLÓGICOS DEL DOLOR.



El dolor esta influidos por factores psicológicos.



Las emociones intensas causan una inhibición transitoria de la sensibilidad al dolor



Suscita miedo porque quien lo sufre anticipa las consecuencias de aquello que lo causa.



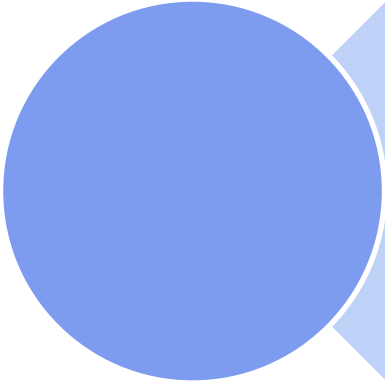


Todos los dolores son reales.

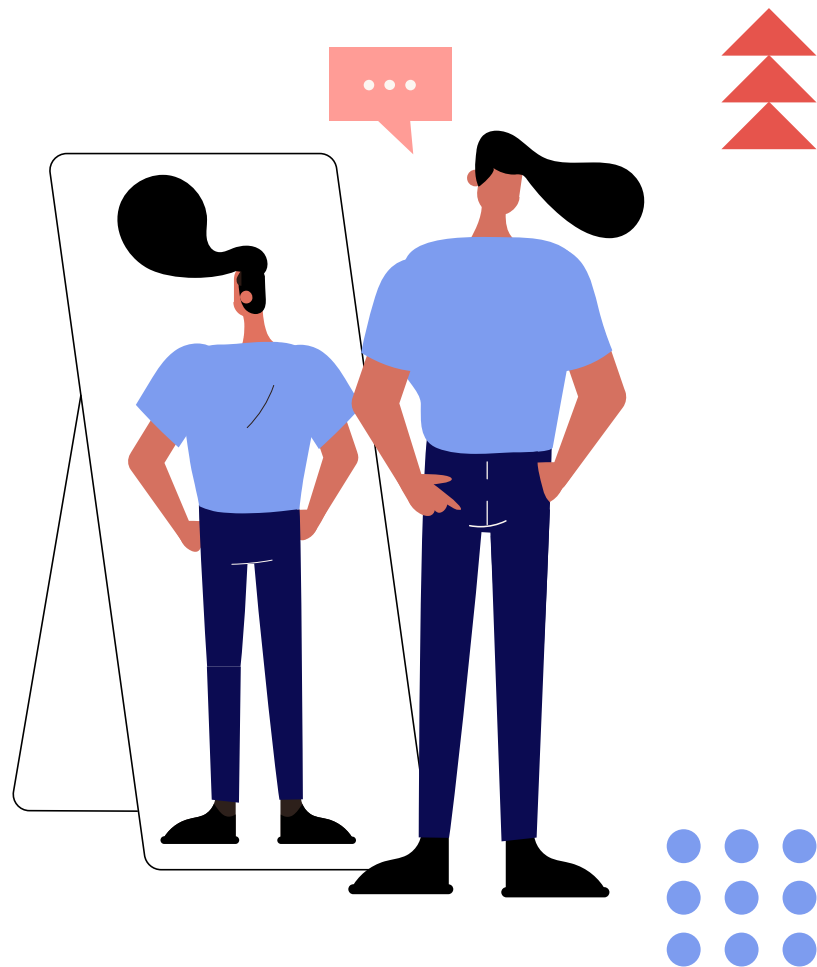
Incluyendo los que se originan en la mente.

Al médico le corresponde aclarar el origen y las condiciones que los mantienen.



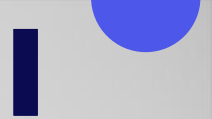


Aún cuando el dolor tenga un componente orgánico, es frecuente que sus componentes psicológicos, familiares y sociales conviertan al que los sufre en un enfermo problemático





# COMPRENDER EL DOLOR





Es necesario indagar en la bibliografía de quién lo sufre.

En la infancia el dolor juega un papel importante en la formación de la imagen corporal.

A su vez forma el núcleo del sentimiento de identidad.

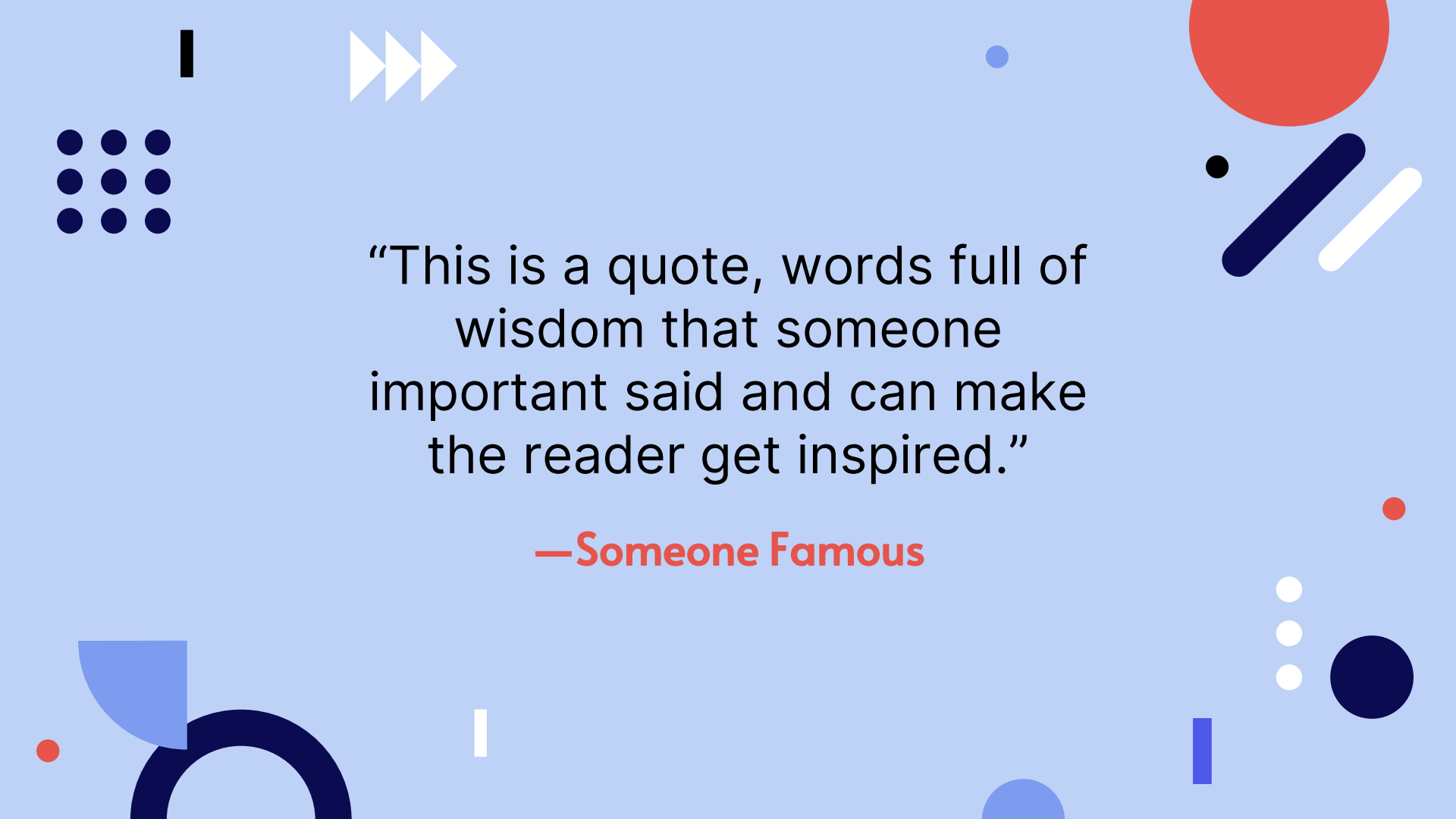


# TIPOS DE DOLOR



# DOLOR TENSIONAL





“This is a quote, words full of  
wisdom that someone  
important said and can make  
the reader get inspired.”

—Someone Famous



# Our team

## John Doe

You can talk a bit about  
this person here

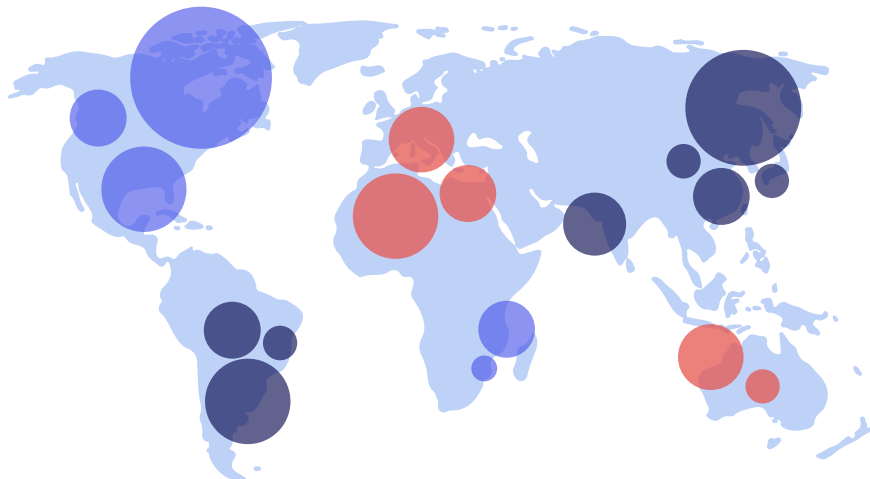
## Lisa Smith

You can talk a bit about  
this person here





# Depression in the world



30%

## Mercury

Mercury is the smallest planet

20%

## Venus

Venus is the second planet

50%

## Mars

Despite being red, Mars is cold



# Moods and disorders



It's the closest planet to the Sun



It's the farthest planet from the Sun



It's located in the main asteroid belt

## Venus

Venus is the second planet from the Sun

It's composed of hydrogen and helium

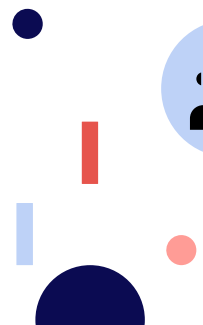
It's now considered a dwarf planet

## Mars

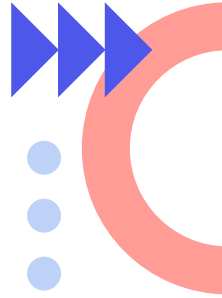
Mars is actually a very cold place

Jupiter is the biggest planet of them all

It's at the center of the Solar System



# How does sadness feel in the body?



## Mercury

It's the closest planet to the Sun

## Venus

Venus is the second planet from the Sun

## Mars

Mars is actually a very cold place

## Jupiter

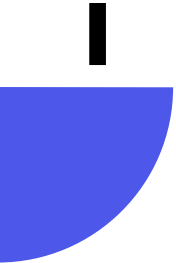
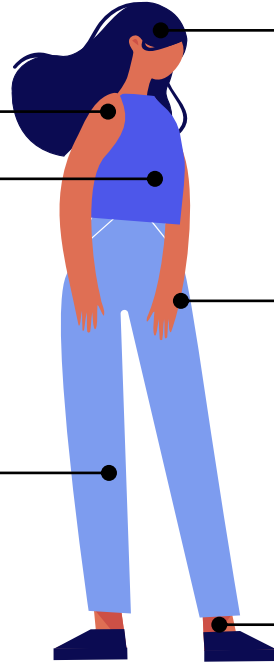
Jupiter is the biggest planet of them all

## Saturn

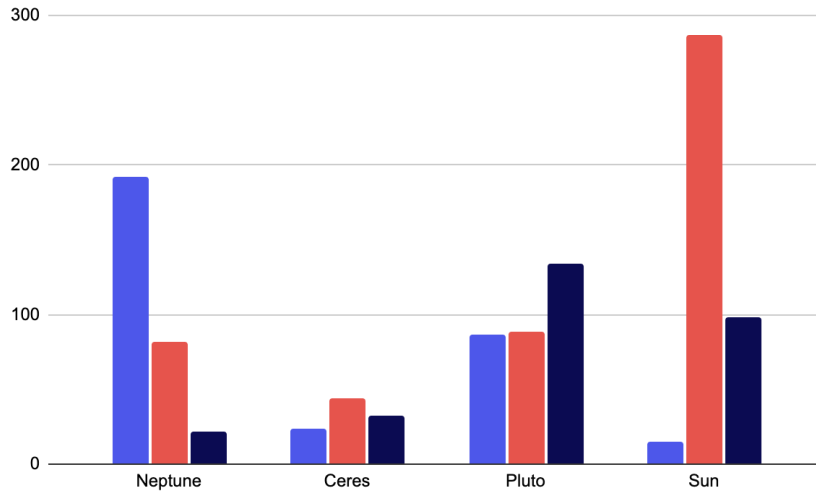
It's composed of hydrogen and helium

## Neptune

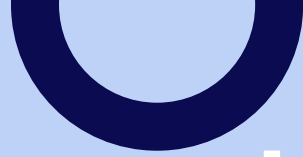
It's the farthest planet from the Sun



# Study of emotions



Follow the link in the graph to modify its data and then paste the new one here. **For more info, click here**



## Mercury

Mercury is the closest planet to the Sun

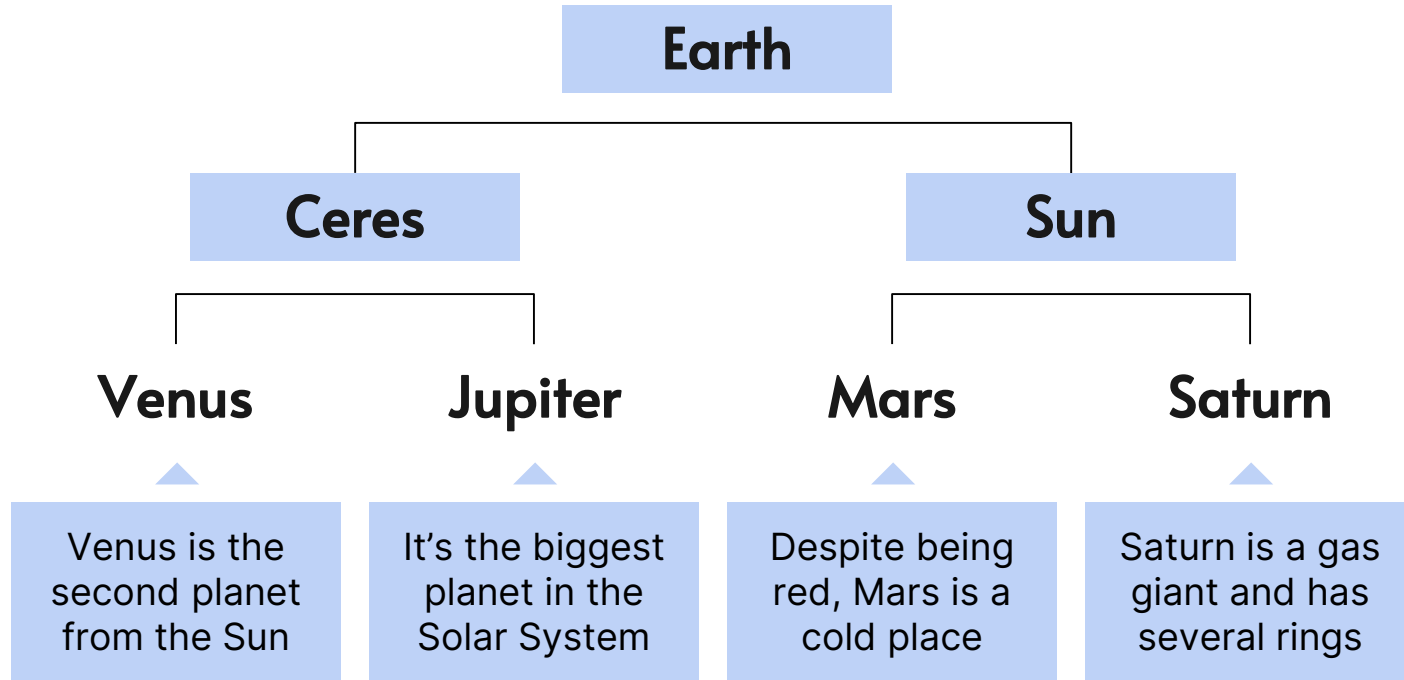
## Venus

Venus has a beautiful name and is the second planet

## Mars

Despite being red, Mars is actually a cold place

# The function of sadness



# Desktop web

You can replace the image on the screen with your own work. Just right-click on it and select “Replace image”





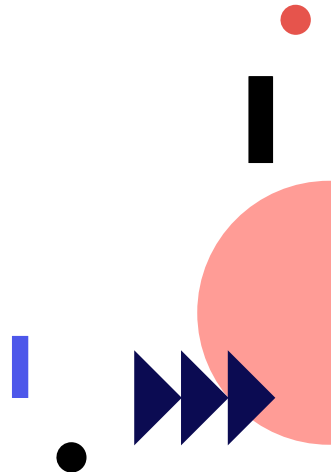
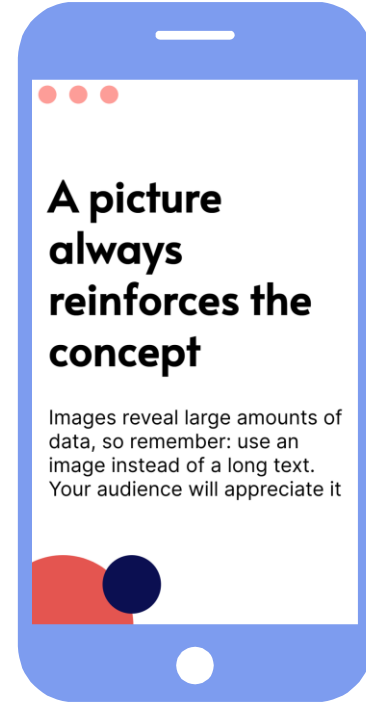
# Tablet app

You can replace the image on the screen with your own work. Just right-click on it and select "Replace image"



# Mobile app

You can replace the image on the screen with your own work. Just right-click on it and select “Replace image”







# Conclusions

Jupiter is a gas giant and the biggest planet in the Solar System

01

Saturn is a gas giant. It's composed of hydrogen and helium

02

Neptune is the farthest planet from the Sun. It's also the fourth-largest

03

# References

- AUTHOR (YEAR). Title of the publication. Publisher
- AUTHOR (YEAR). Title of the publication. Publisher
- AUTHOR (YEAR). Title of the publication. Publisher
- AUTHOR (YEAR). Title of the publication. Publisher
- AUTHOR (YEAR). Title of the publication. Publisher

- AUTHOR (YEAR). Title of the publication. Publisher
- AUTHOR (YEAR). Title of the publication. Publisher
- AUTHOR (YEAR). Title of the publication. Publisher
- AUTHOR (YEAR). Title of the publication. Publisher
- AUTHOR (YEAR). Title of the publication. Publisher



## Email

Your email here



## Address

Your address here



## Cell Phone

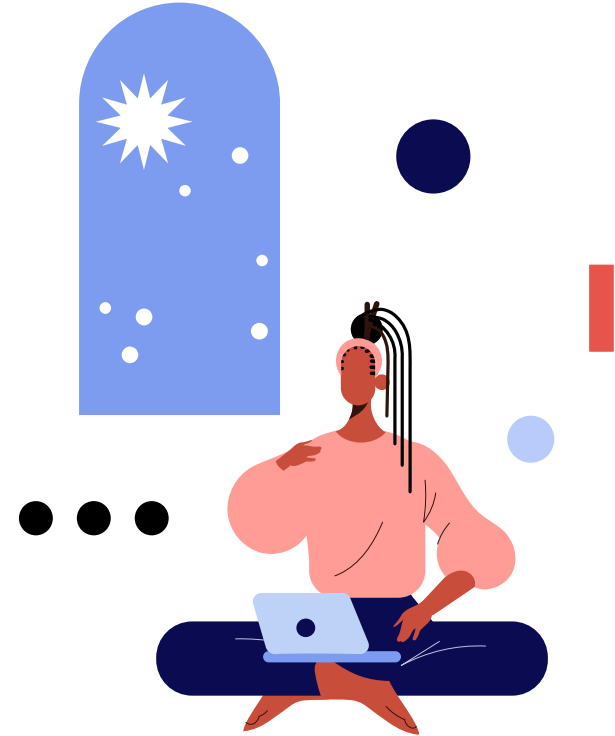
+00 000 000 000



## Phone

+00 000 000 000

# Contact us



# Thanks!

Do you have any questions?

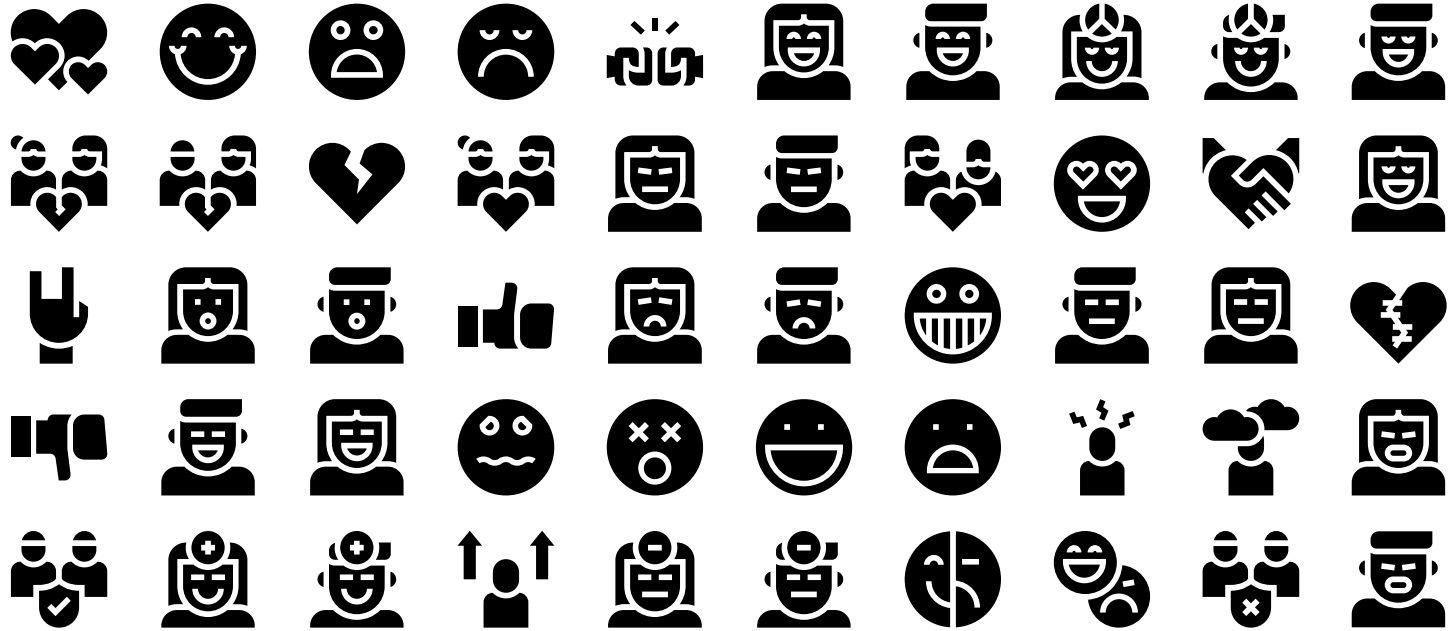
youremail@freepik.com  
+91 620 421 838  
yourcompany.com



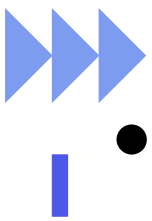
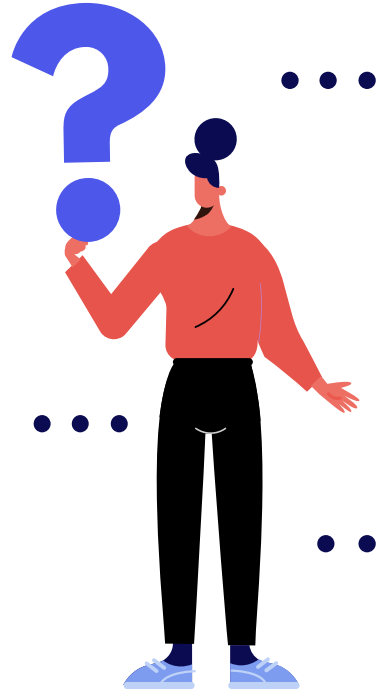
CREDITS: This presentation template was created by Slidesgo, including icons by Flaticon and infographics & images by Freepik

**Please keep this slide for attribution**

# Human relations and emotions icon pack



# Alternative resources



# Alternative resources

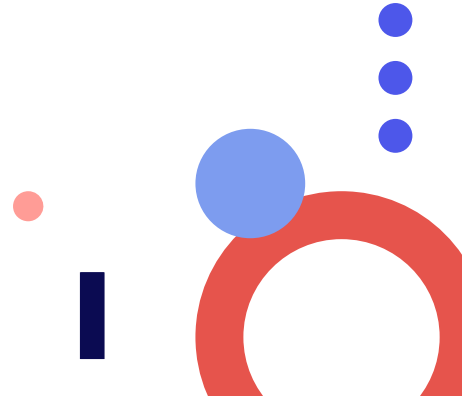
Here's an assortment of alternative resources whose style fits that of this template

## Photos

- Side view of sad black man crying
- Sad man being consoled by woman at a group therapy session
- Adult woman at therapy session
- Side view woman looking sad as she works from home

## Icons

- Icon Pack: Mental Health



# Resources

Did you like the resources on this template? Get them for free at our other websites:

## Vectors

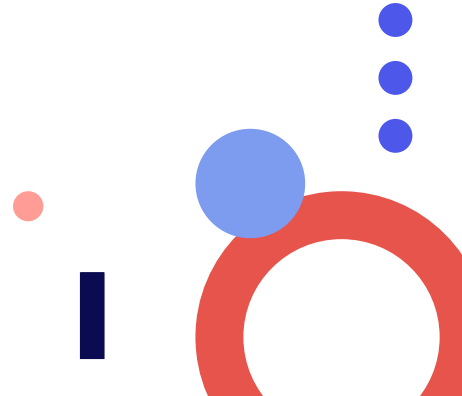
- Low self-esteem illustration
- Couple conflicts concept
- Collection of illustrated lesbian couple scenes
- Flat illustration of people taking care of plants
- Flat international youth day illustration
- Group of people asking questions

## Photos

- Adult woman stressing out at home
- Sad woman at a group therapy session

## Icons

- Icon Pack: Human relations and emotions





# Instructions for use

In order to use this template, you must credit [Slidesgo](#) by keeping the [Thanks](#) slide.

## You are allowed to:

- Modify this template.
- Use it for both personal and commercial projects.

## You are not allowed to:

- Sublicense, sell or rent any of Slidesgo Content (or a modified version of Slidesgo Content).
- Distribute Slidesgo Content unless it has been expressly authorized by Slidesgo.
- Include Slidesgo Content in an online or offline database or file.
- Offer Slidesgo templates (or modified versions of Slidesgo templates) for download.
- Acquire the copyright of Slidesgo Content.

For more information about editing slides, please read our FAQs or visit Slidesgo School:

<https://slidesgo.com/faqs> and <https://slidesgo.com/slidesgo-school>

# Instructions for use (premium users)

In order to use this template, you must be a Premium user on [Slidesgo](#).

## You are allowed to:

- Modify this template.
- Use it for both personal and commercial purposes.
- Hide or delete the “Thanks” slide and the mention to Slidesgo in the credits.
- Share this template in an editable format with people who are not part of your team.

## You are not allowed to:

- Sublicense, sell or rent this Slidesgo Template (or a modified version of this Slidesgo Template).
- Distribute this Slidesgo Template (or a modified version of this Slidesgo Template) or include it in a database or in any other product or service that offers downloadable images, icons or presentations that may be subject to distribution or resale.
- Use any of the elements that are part of this Slidesgo Template in an isolated and separated way from this Template.
- Register any of the elements that are part of this template as a trademark or logo, or register it as a work in an intellectual property registry or similar.

For more information about editing slides, please read our FAQs or visit Slidesgo School:

<https://slidesgo.com/faqs> and <https://slidesgo.com/slidesgo-school>

# Fonts & colors used

This presentation has been made using the following fonts:

## Alata

(<https://fonts.google.com/specimen/Alata>)

## Inter

(<https://fonts.google.com/specimen/Inter>)



# Storyset

Create your Story with our illustrated concepts. Choose the style you like the most, edit its colors, pick the background and layers you want to show and bring them to life with the animator panel! It will boost your presentation. Check out [How it Works](#).



Pana



Amico



Bro



Rafiki

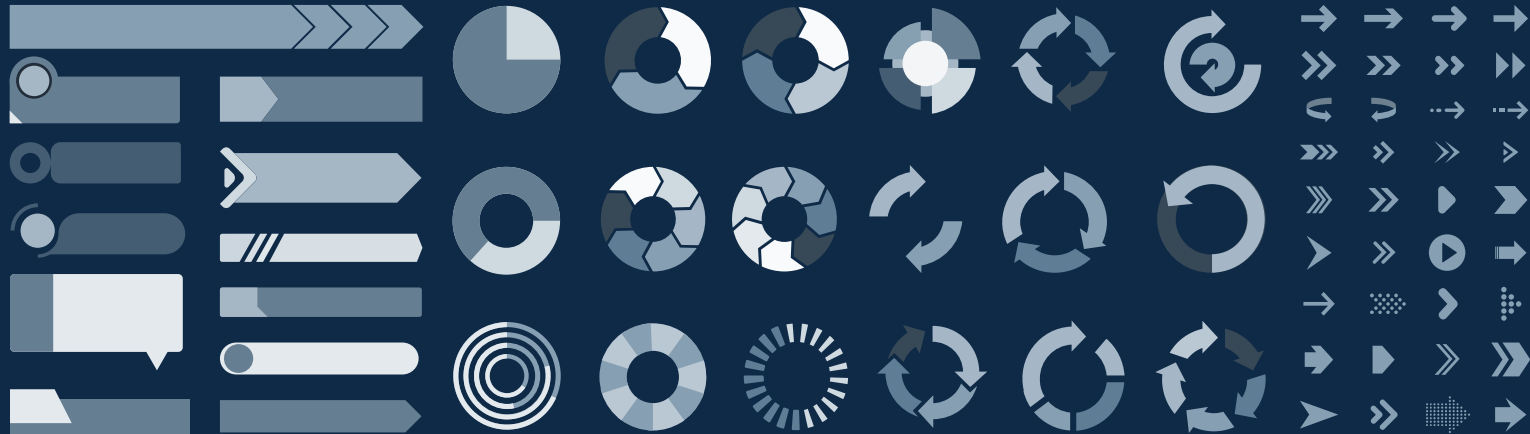


Cuate

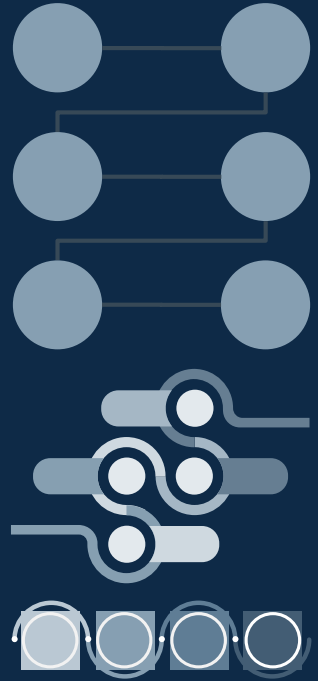
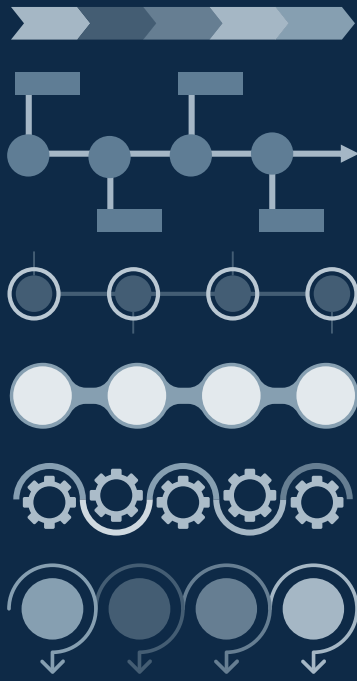
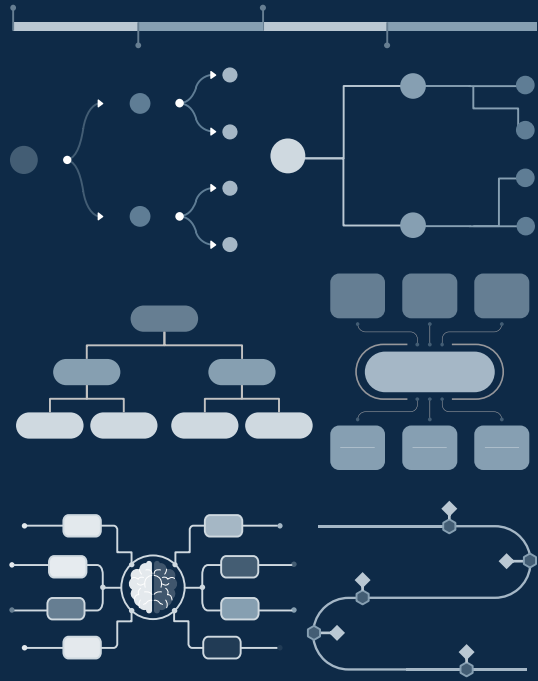
# Use our editable graphic resources...

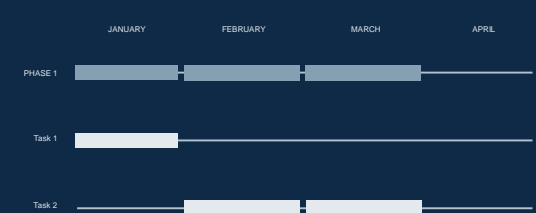
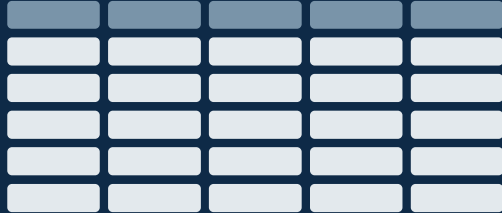
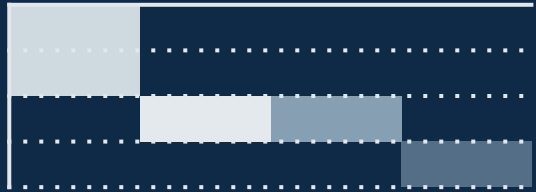
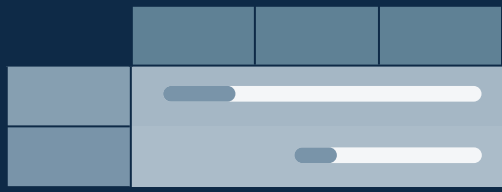
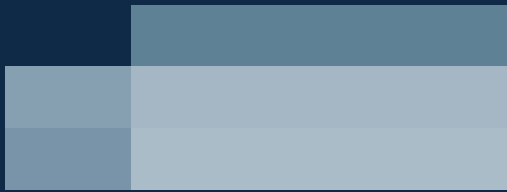
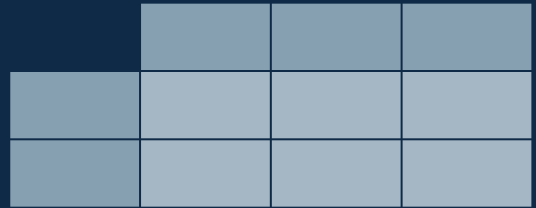
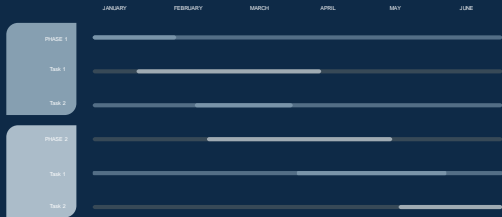
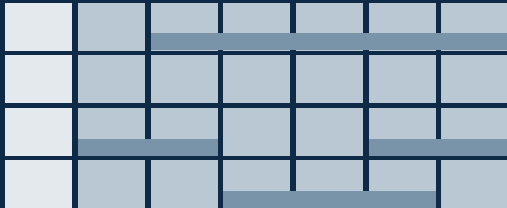
You can easily *resize* these resources without losing quality. To change the *color*, just ungroup the resource and click on the object you want to change. Then, click on the paint bucket and select the color you want.

Group the resource again when you're done. You can also look for more [infographics](#) on Slidesgo.

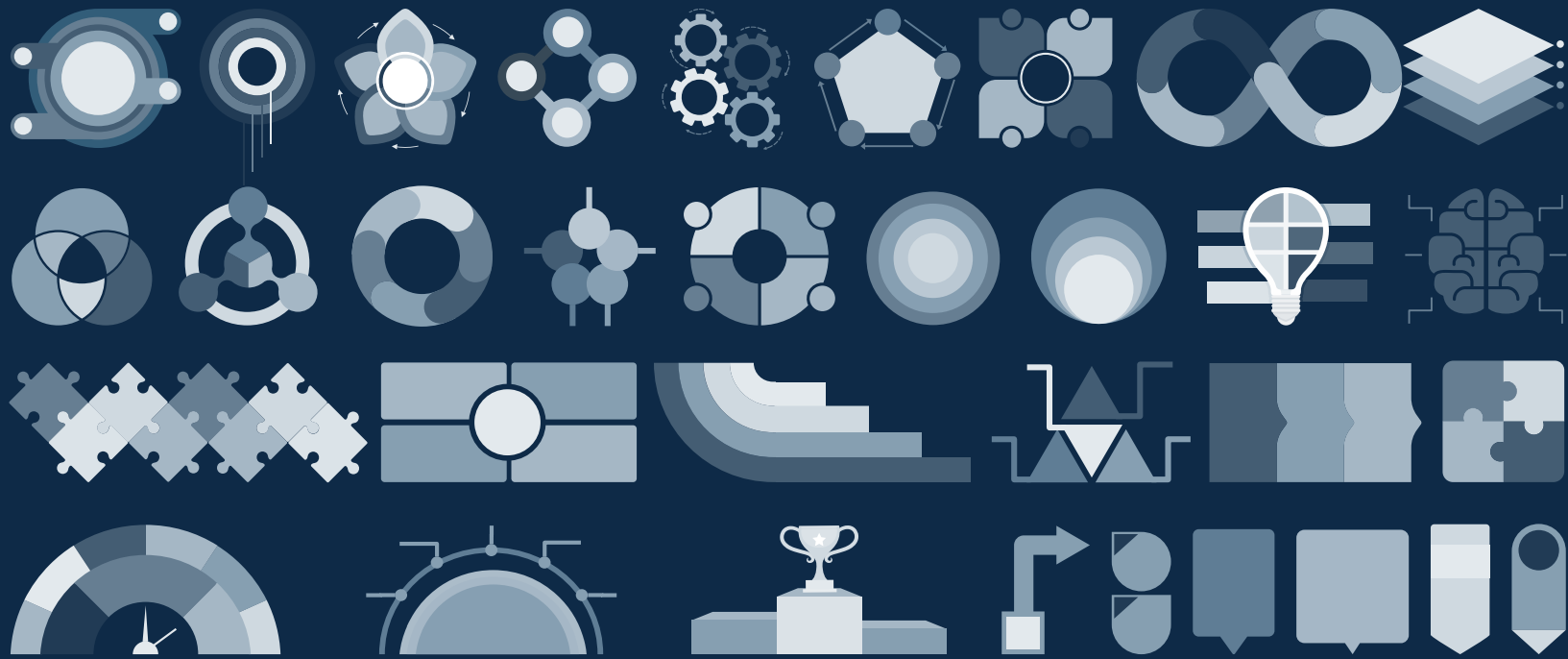


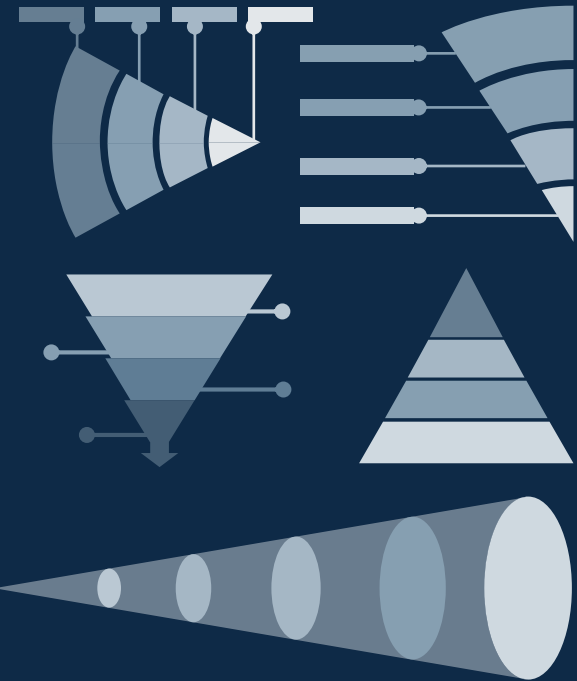
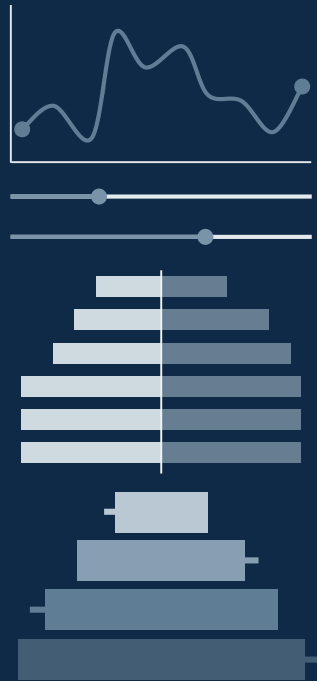
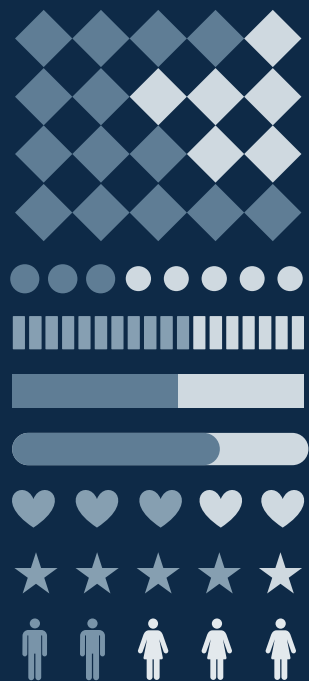
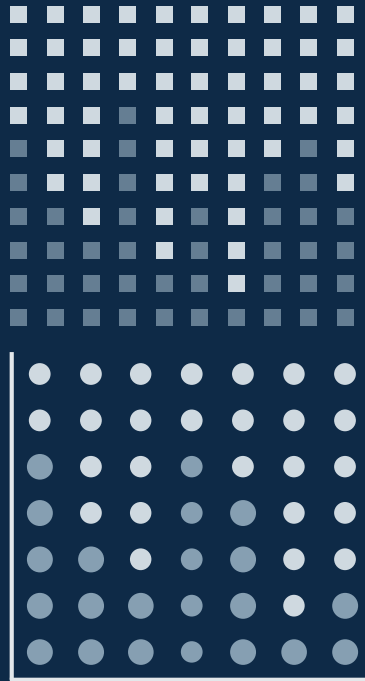












# ...and our sets of editable icons

You can *resize* these icons without losing quality.

You can change the stroke and fill color; just select the icon and click on the paint bucket/pen.

In Google Slides, you can also use [FlatIcon's extension](#), allowing you to customize and add even more icons.



## Educational Icons



## Medical Icons



## Business Icons



## Teamwork Icons





## Creative Process Icons



## Performing Arts Icons



# Nature Icons





# SEO & Marketing Icons



