

BIOMATEMATICAS

CATEDRATICO:

LQ. JOSE LUIS MUÑOZ MORALES

ALUMNA:

DANIELA DE LOS ANGELES RAMIREZ MANUEL

ESPECIALIDAD:

MEDICINA HUMANA I

SEMESTRE:

SEGUNDO

MAYO 2021

$$x = -2 \quad F(0, p) = F(0, -2)$$

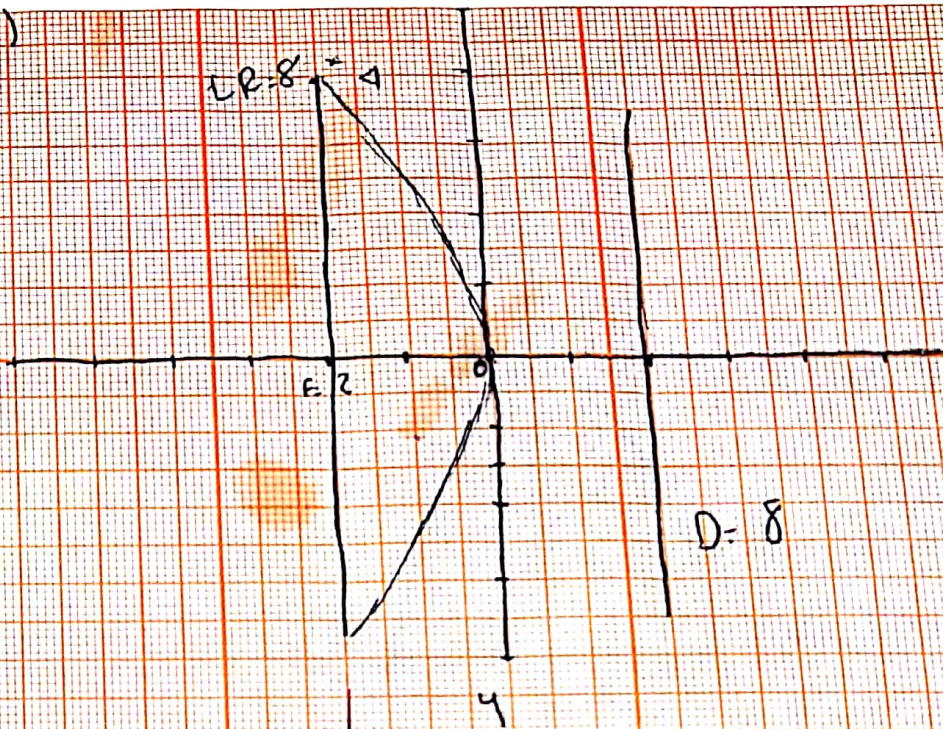
$$y^2 = 4px \quad x = -2$$

$$p = 2$$

$$y^2 = 4(-2) = y^2 = -8x$$

$$LR = |4p| = |4(-2)| = |-8| = -8$$

$$p < 0, D, x = 8$$



$$F(2, 0) \quad V(0, 0)$$

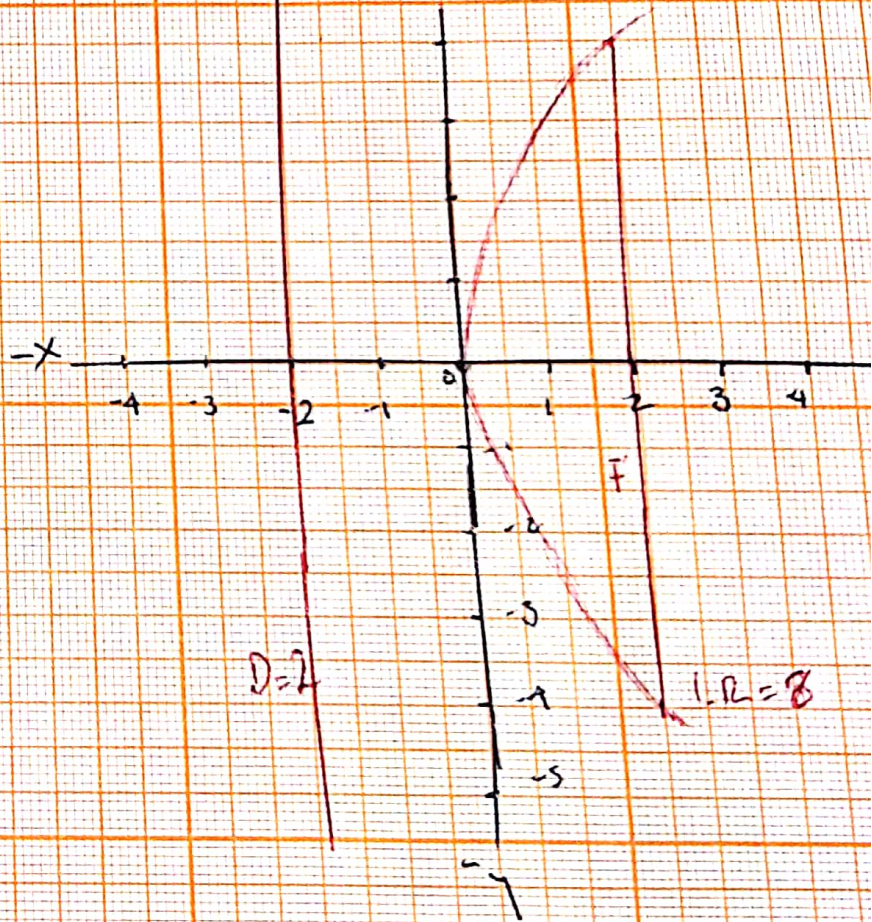
$$F(\pm p, 0)$$

$$y^2 = \pm 4px \quad p = 2$$

$$LR = |4p| = 4(2) = 8$$

$$p > 0; D = x = -p$$

$$D = x = -8$$



Parabola Horizontal

Daniela de los Angeles Ramirez Hanel.

$$F(0, -4) \quad V(0, 0)$$

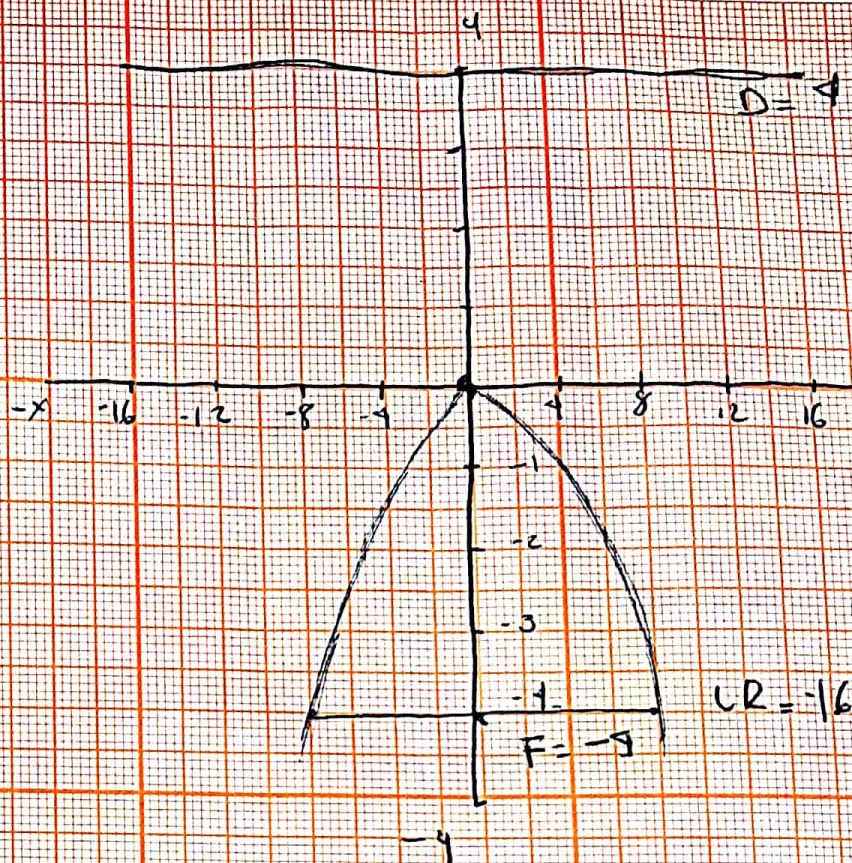
$$P = -4$$

$$x^2 = 4py = x^2 = 4(-4) = -16y$$

$$LR = |4p| = |4(-4)| = -16 LR$$

$$P < 0 \quad D = y = p = y = -4$$

Parabola vertical.



$$y = -3$$

$$y = -3 = 0 \quad V(0, 0)$$

$$p = 3$$

$$x^2 = 4py$$

$$x^2 = 4(-3) = x^2 = -12y$$

$$F(0, \pm p) = F(0, \pm 3)$$

$$LR = |4p| = |4(-3)| = |12| = LR$$

$$P > 0, D \cdot x = -12$$

