



BIOMATEMATICAS

CATEDRATICO:

LQ. JOSE LUIS MUÑOZ MORALES

ALUMNA:

DANIELA DE LOS ANGELES RAMIREZ MANUEL

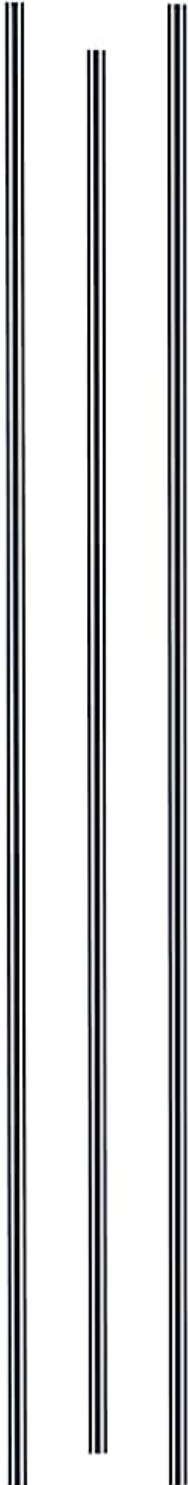
ESPECIALIDAD:

MEDICINA HUMANA I

SEMESTRE:

SEGUNDO

MAYO 2021



$$a) V(-2, -1)$$

$$F(0, -1) \quad d = y = -9$$

$$k = -1 \quad h = -2$$

$$h+p=0 \quad -2+p=0$$

$$p = 2$$

$$(y-k)^2 = 4p(x-h)$$

$$(y-(-1))^2 = 4 \cdot 2 (x-(-2))$$

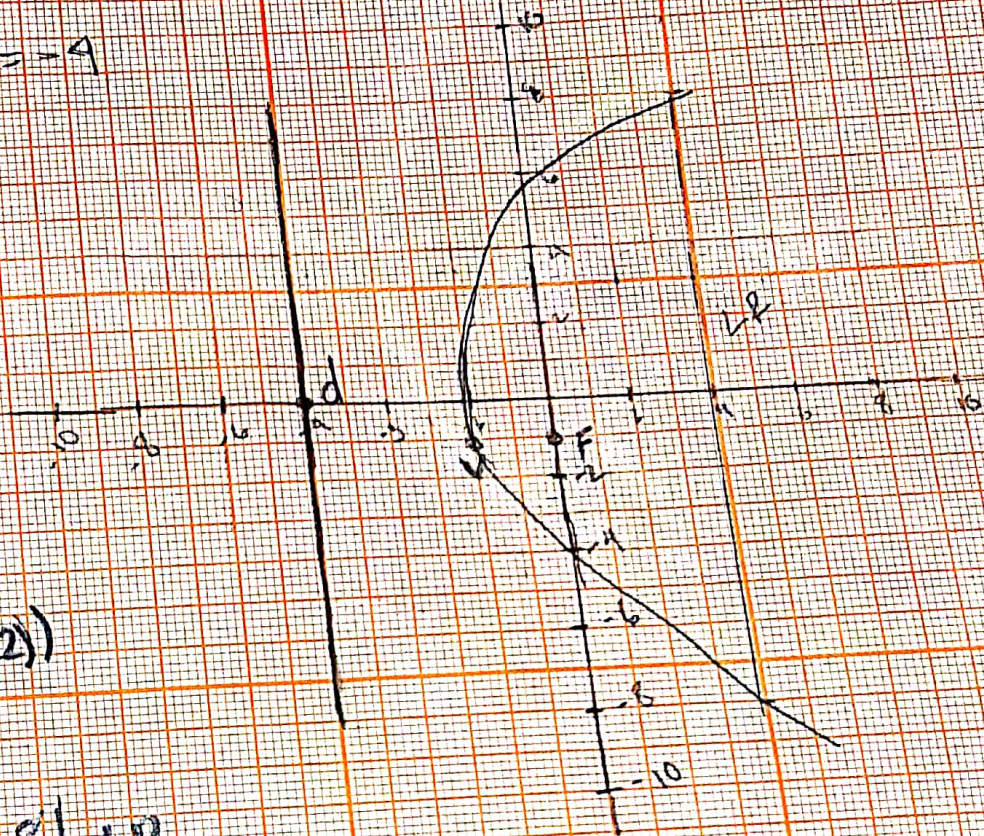
$$(y+1)^2 = 8(x+2)$$

$$LR = |4p| = |4(2)| = |8| = LR$$

General

$$y^2 + (y+D)x + E = 0$$

$$y^2 + 2y - 8x - 15 = 0$$



$$b) F(0, -3) \quad V(0, -2)$$

$$d = y = -1$$

$$p = 1$$

$$k = -3$$

$$h = 0$$

$$V(0, -2)$$

$$h + p = 0 \quad 0 + p = 0$$

$$(x - h)^2 = 4 \cdot p \cdot (y - k)$$

$$(x - 0)^2 = 4 \cdot 1 \cdot (y - (-2))$$

$$x^2 = 4(y + 2)$$

$$|R = 4p| = |4(1)| = |4| = 12$$

E = general

$$x^2 + Dx + E_1 + F = 0$$

$$x^2 + 1y + 12 = 0 \quad x$$

