

Angélica Montserrat

16-Mayo-2021

Biomatemáticas Tarea 3-2

Ecuación de la parábola y gráfica, a) F(2,0)

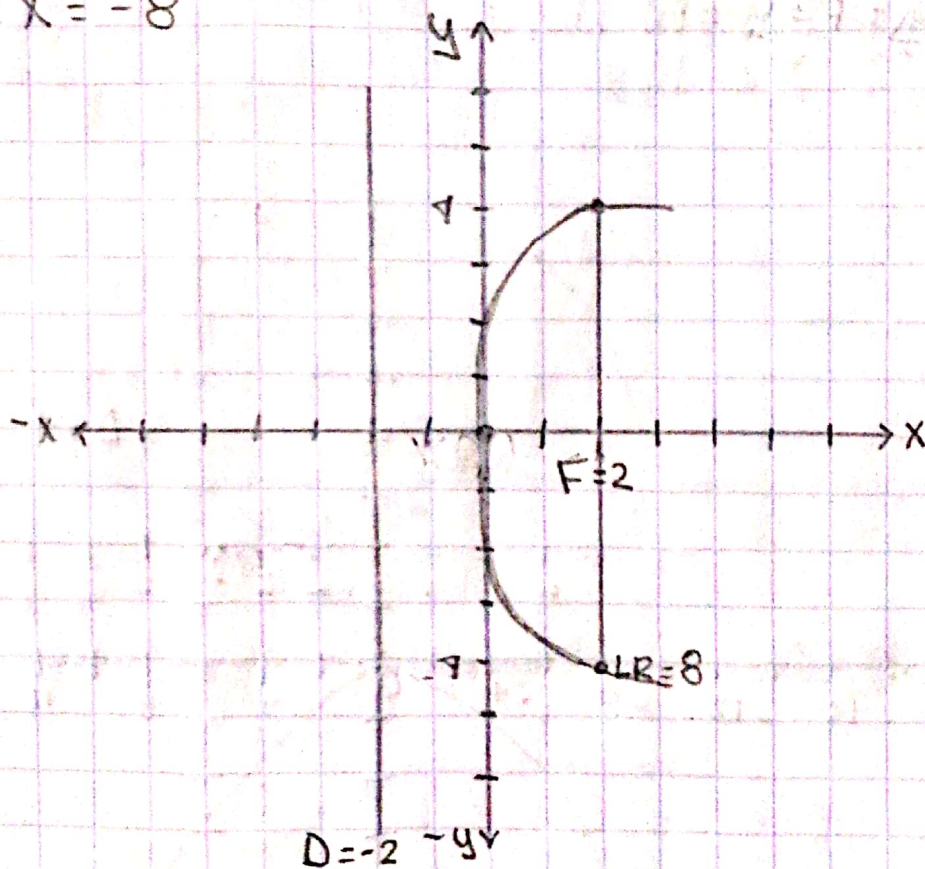
a) F(2,0) Parábola horizontal

$$y^2 = \pm 4px \quad p=2$$

$$LR = |4p| = 4(2) = 8 \quad V = (0,0)$$

$$p > 0; D = x = -p$$

$$D = x = -8$$



Scanned

Parabola Vertical

Parabola Vertical

$$b) F(0, -4)$$

$$F(0, \pm p) \quad V(0, 0)$$

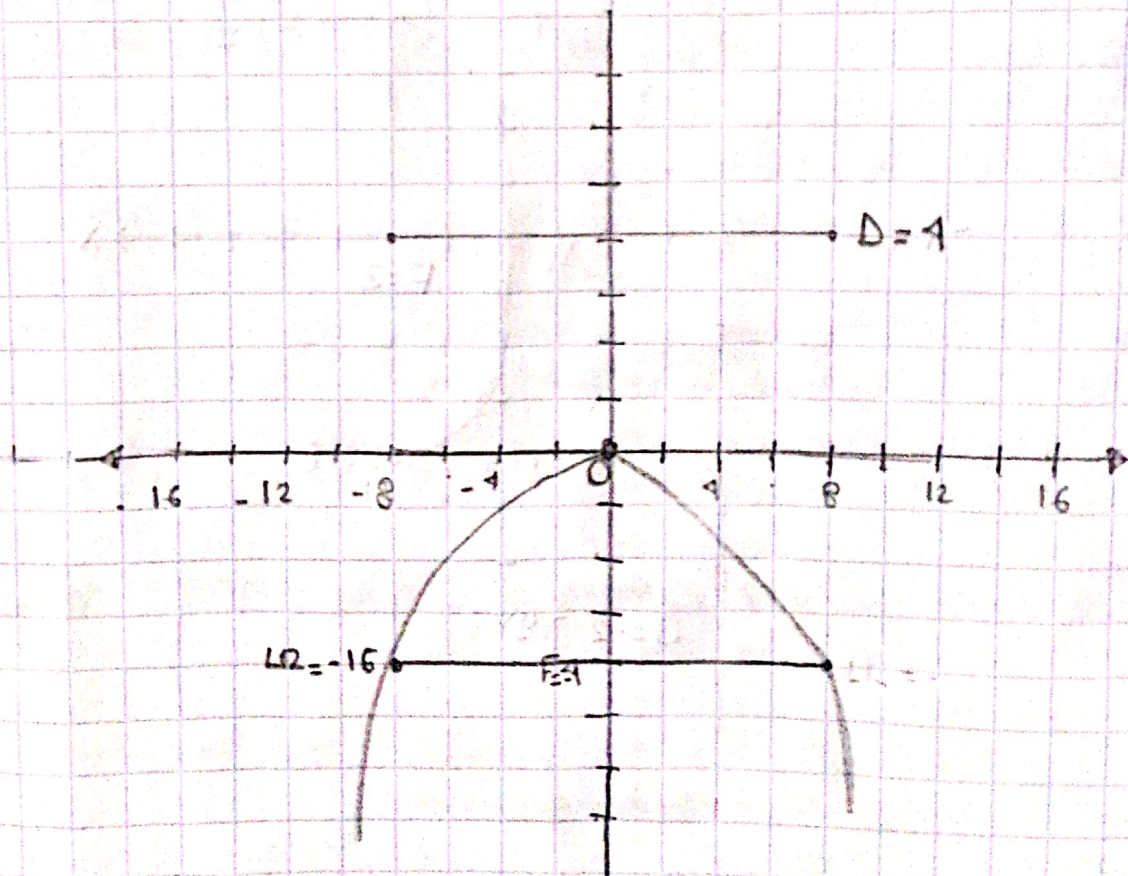
$$p = -4$$

$$x^2 = 4py = x^2 = 4(-4) = -16y$$

$$LR = |4p| = |4(-4)| = -16 \quad LR$$

$$p < 0$$

$$D = y = p = y = -4$$



Scanned

$$c) x = -2$$

Parabola horizontal $x = k = b$

$$y^2 = \pm 4px$$

$$V(0,0)$$

$$y^2 = 4px$$

$$x = -2$$

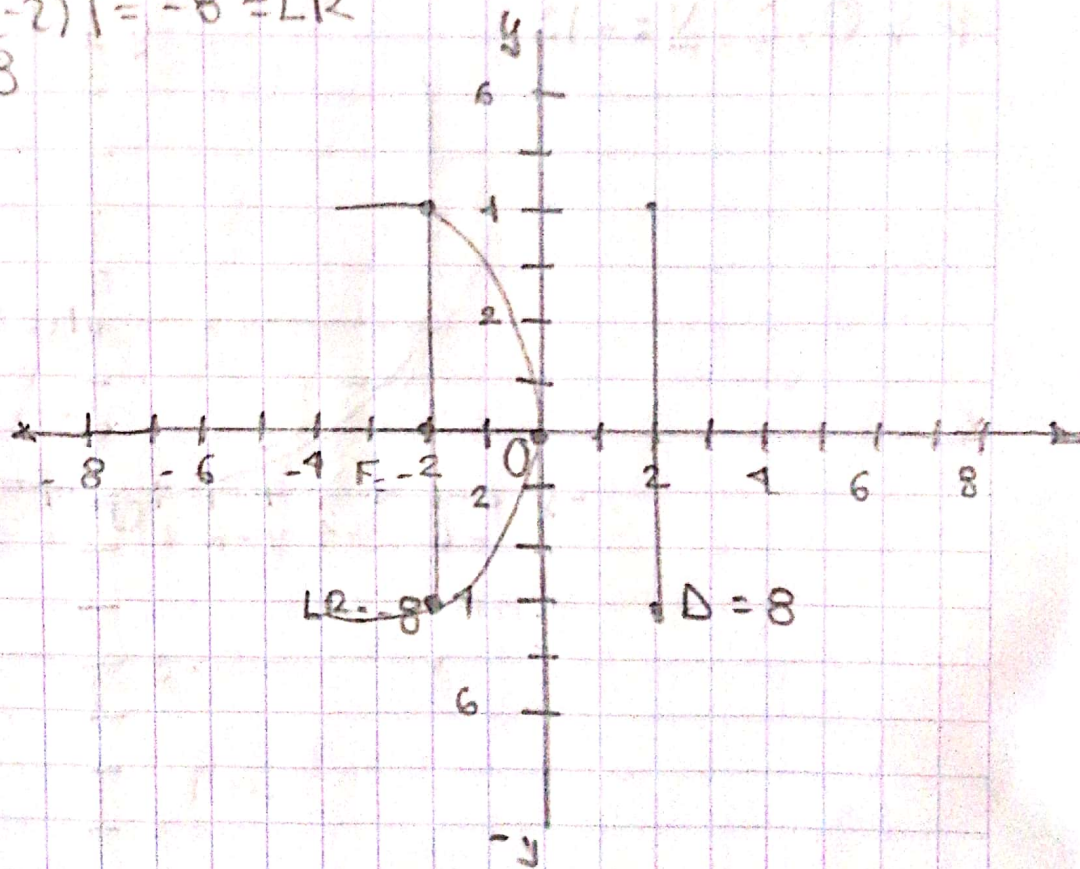
$$F(0, \pm p) = F(0, \pm 2)$$

$$p = 2$$

$$y^2 = 4(-2) = y^2 = -8x$$

$$LR = |4p| = |4(-2)| = -8 = LR$$

$$p < 0, D: x = 8$$



$$d = y = -3$$

$$V(0,0)$$

Parabola Vertical $\Delta = -4(0)$

$$F(0, \pm p) = (0, \pm 3)$$

$$y = -3$$

$$p = 3$$

$$x^2 = 4py$$

$$x^2 = 4(-3)y = x^2 = -12y$$

$$LR = |4p| = |4(-3)| = |12| LR$$

$$p > 0, D: y = -12$$

