



**Nombre de alumno: Enrique fabian Jimenez fonseca**

**Nombre del profesor: pedro García**

**Nombre del trabajo: trabes**

**Materia: análisis estructural**

**Grado: 5to**

**Grupo:**

PASIÓN POR EDUCAR

Comitán de Domínguez Chiapas a 12 de febrero de 2021.

Table 5

AT = 4.6718

Length = 4.825

$4.6718 \cdot (.700) = 3.27026$

$= 0.6777$

AT<sub>2</sub> = 0.4064

Length = 1.78

$0.4064 \cdot (.700) = 0.28448$   
 $\frac{0.28448}{1.78} = 0.22225$

- + 0.6777 1/m
- + 0.22225 1/m
- + 0.072 1/m
- 0.072 1/m
- 0.7452 1/m

1.78915 1/m



Trabe 4

AT = 5.211  
Lantold = 5.075

$$5.211 (.700) = \frac{3.6477 \text{ t/m}^2}{5.075}$$

$$- 0.7187$$
$$+ 0.7187$$

$$\hline 1.4374 \text{ t/m}^2$$

$$+ 0.072 \text{ t/m}^2$$

$$0.072 \text{ t/m}^2$$

$$+ 0.7452 \text{ t/m}^2$$

$$\hline = 2.3266 \text{ t/m}^2$$



Table 3

AT<sub>1</sub>: 17653

length: 2.650

$$17653(.610) = \frac{10707}{1.6} = 0.6692$$

~~0.6692~~

AT<sub>2</sub>: 413984

length: 4.425

$$413984(.610) = \frac{2.6830}{4.425} = 0.6063$$

$$0.6692 + 0.6063 = 1.2755 \text{ m}^2$$

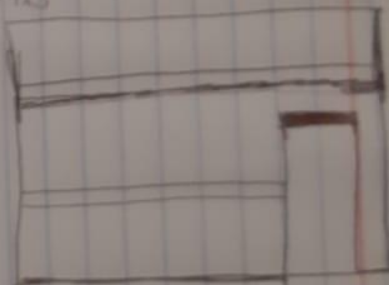
~~0.6692~~

0.2452 m<sup>2</sup>

1.0070 m<sup>2</sup>

+ 0.0071 m<sup>2</sup>

$$= 2.0351 \text{ m}^2$$



Tubo 3

$$AT = 17853$$

$$\text{long} = 7650$$

$$\text{long tubo} = 16$$

$$17853(700) = \frac{122871}{2.650}$$

$$= 463.66 \text{ kg/m}^2$$

$$AT2 = 43984$$

$$\text{long tot} = 4.425$$

$$= 695.792 \text{ kg/m}^2$$

$$\text{Carga} = 1,159.452 \text{ ton/m}$$

T

$$43984(700) = \frac{3,078.88}{4.425}$$

Peso muro

$$1.38(0.270) = 0.3726 \text{ t/m}^2$$

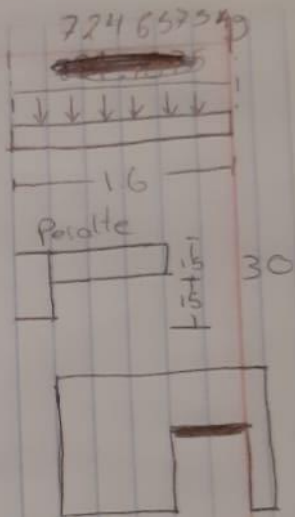
$$\times 2 = 0.7452 \text{ t/m}^2$$

Data Inter

$$0.15 \times 0.20 \times 2400 = 0.0072 \text{ t/m}^2$$

Cemento

$$.15 \times .20 \times 0.240 = 0.0072 \text{ t/m}^2$$



## Trabe 2

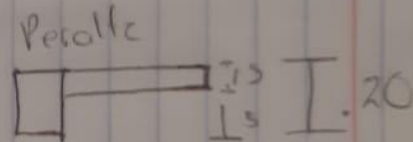
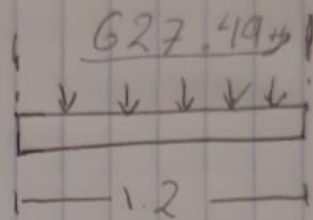
$$\text{Area} = 2.8055$$

$$\text{Long mudo} = \cancel{2.8055} \cdot 3.600$$

$$2.8055(3.600) = \cancel{10.100}$$

$$\frac{1711.355}{3.600}$$

$$= \underline{475.376 \text{ Kg/m}^2}$$



probe 1

AT. 0.7390 - 7.39

Long = 1.95

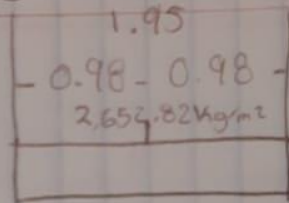
$T_1 = 0.98 > 1.95$

$T_2 = 0.98$

$$7.39 (700) = \frac{5,173}{1.95} = 2,652.82 \text{ kg/m}^2$$

~~2,652.82~~

⑨



⑤

