



ROXANA GERALDINE HERNÁNDEZ GÁLVEZ

ARQ. VICTOR MANUEL SANTIAGO GUILLEN

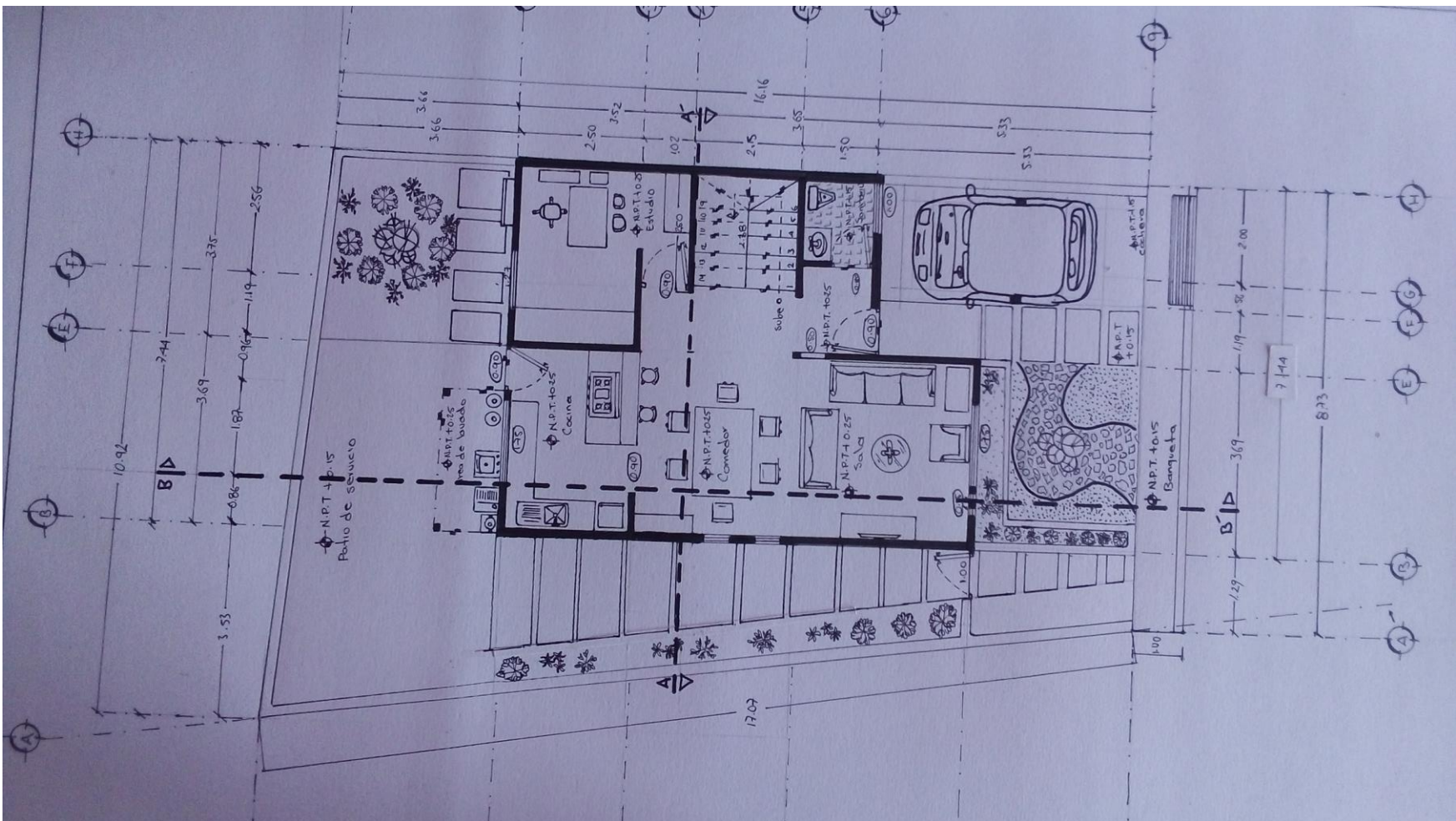
EXAMEN 4ta. UNIDAD: PLANTA ARQUITECTONICA BAJA Y ALTA, CORTE TRANSVERSAL Y FACHADAPRINCIPAL

GEOMETRIA DESCRIPTIVA I

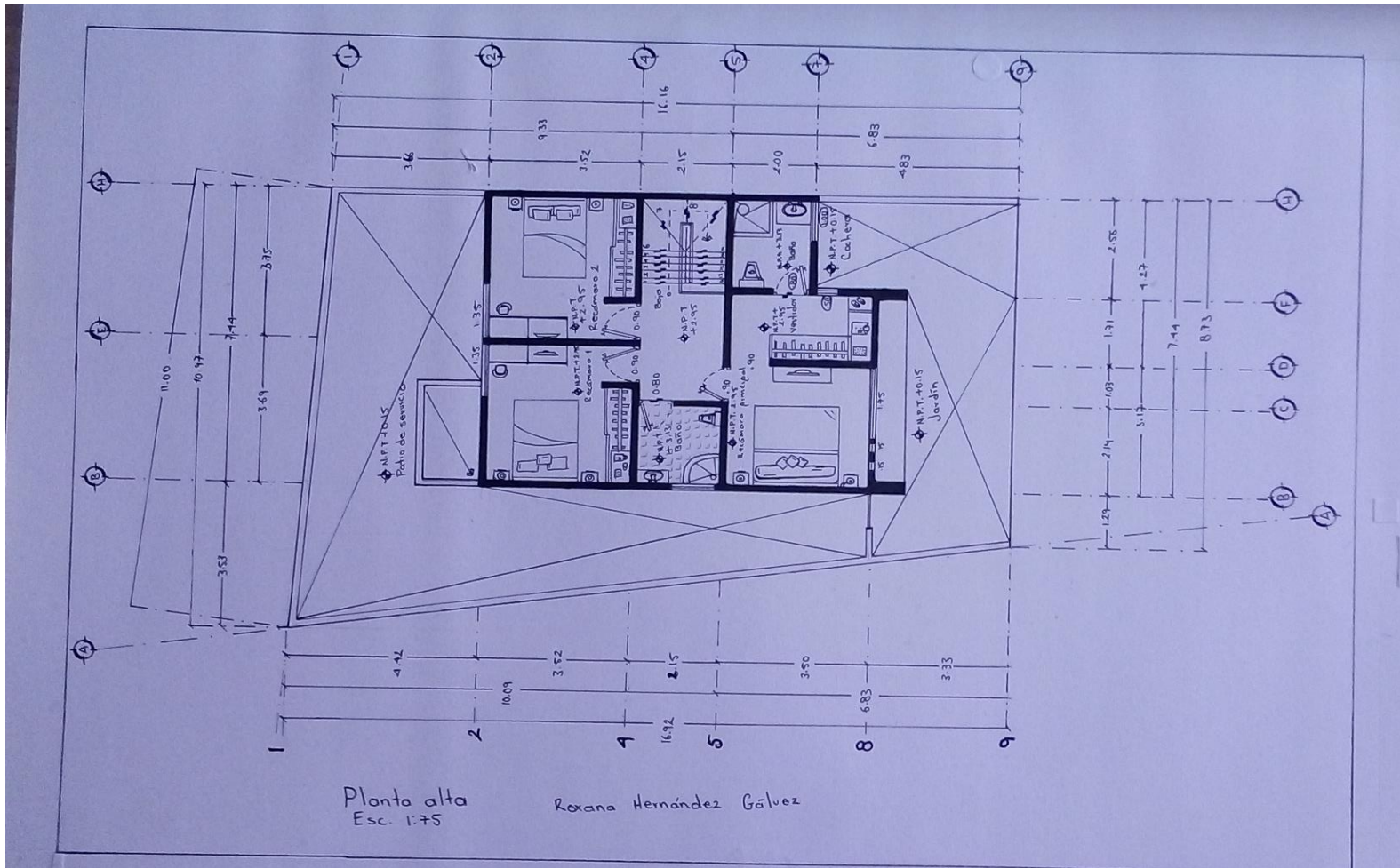
2DO. CUATRIMESTRE

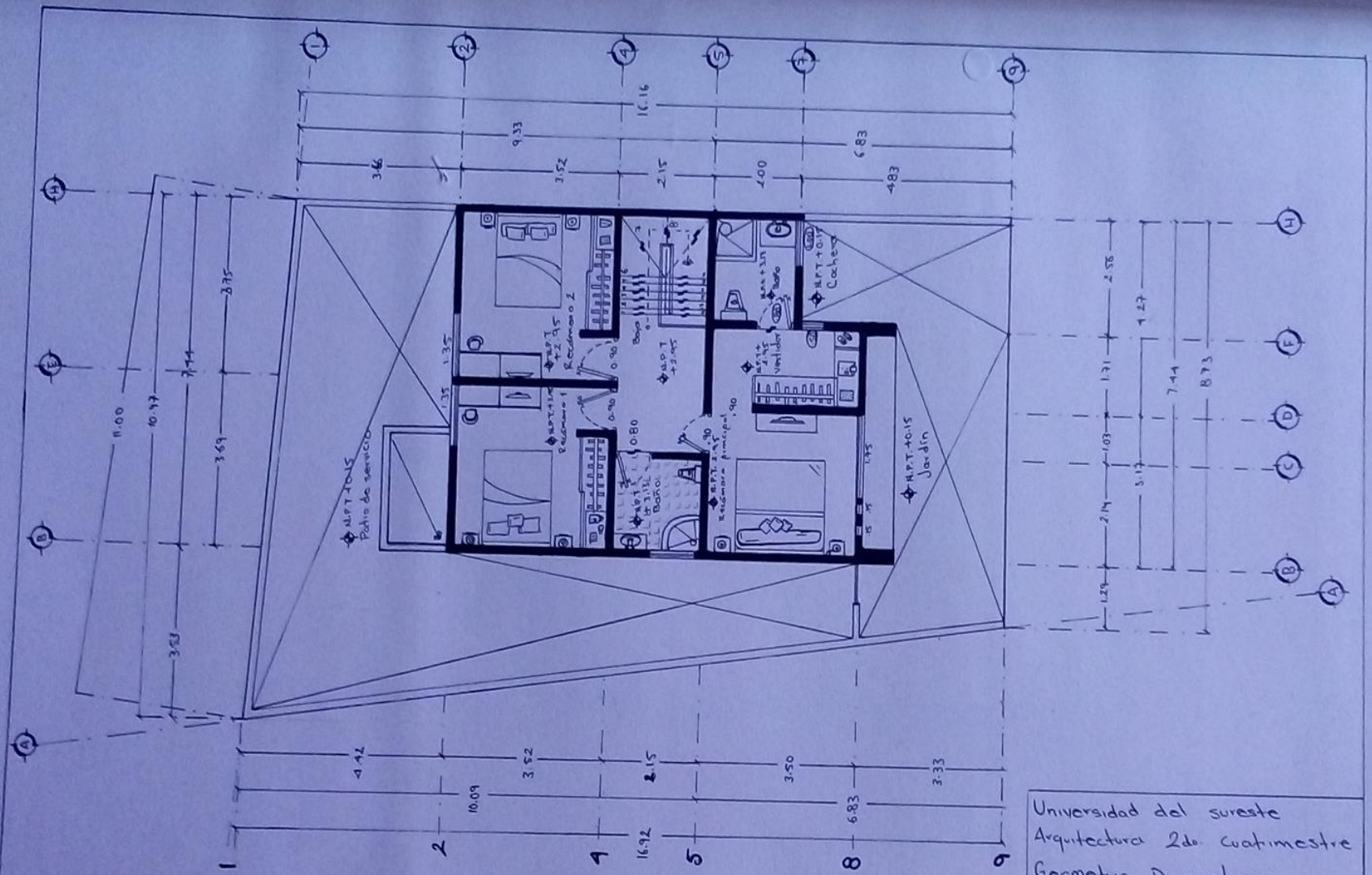
LAR- LICENCIATURA EN ARQUITECTURA "A"

COMITÁN DE DOMÍNGUEZ CHIAPAS A 12 ABRIL 2021.

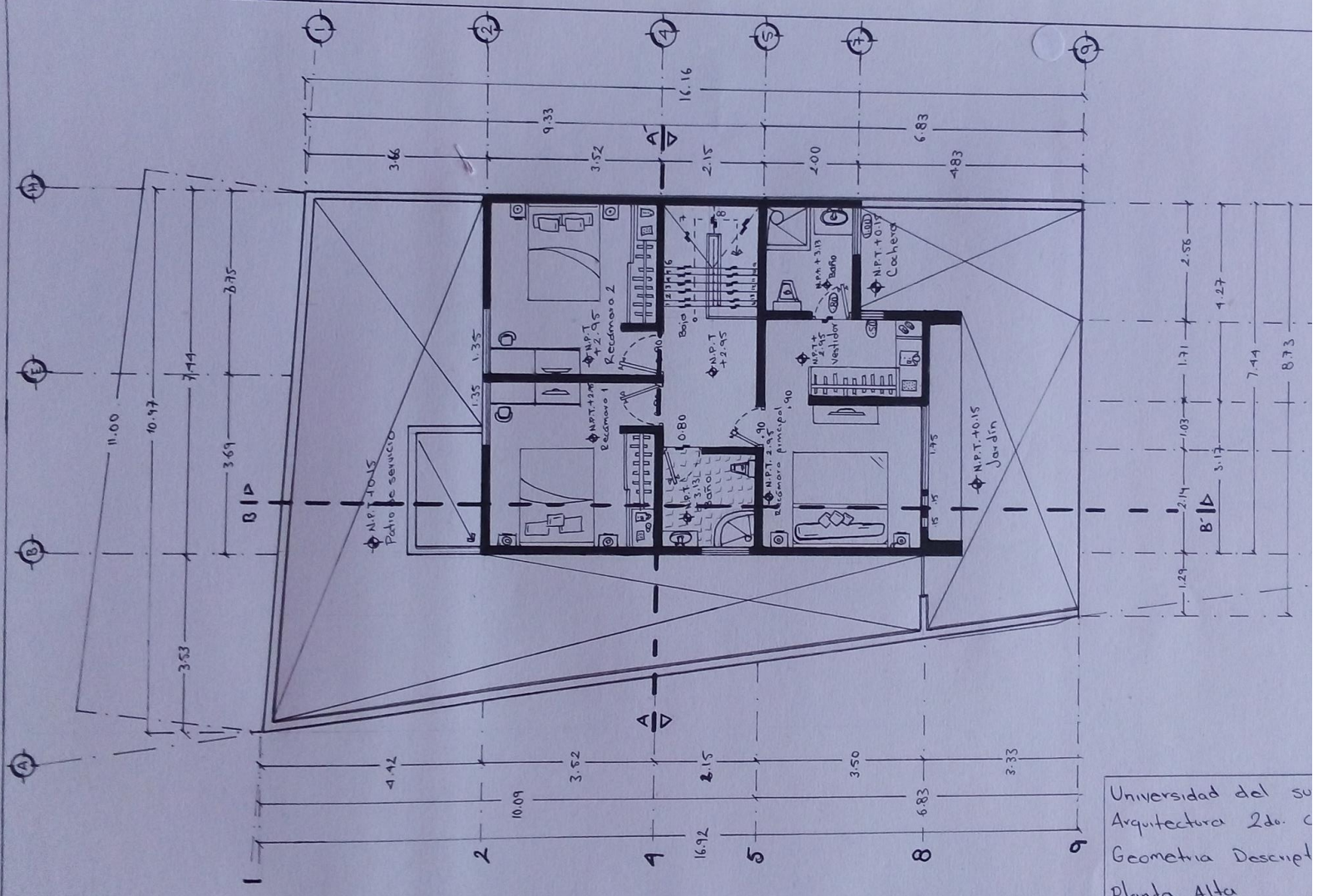


PLANTA ARQUITECTONICA ALTA



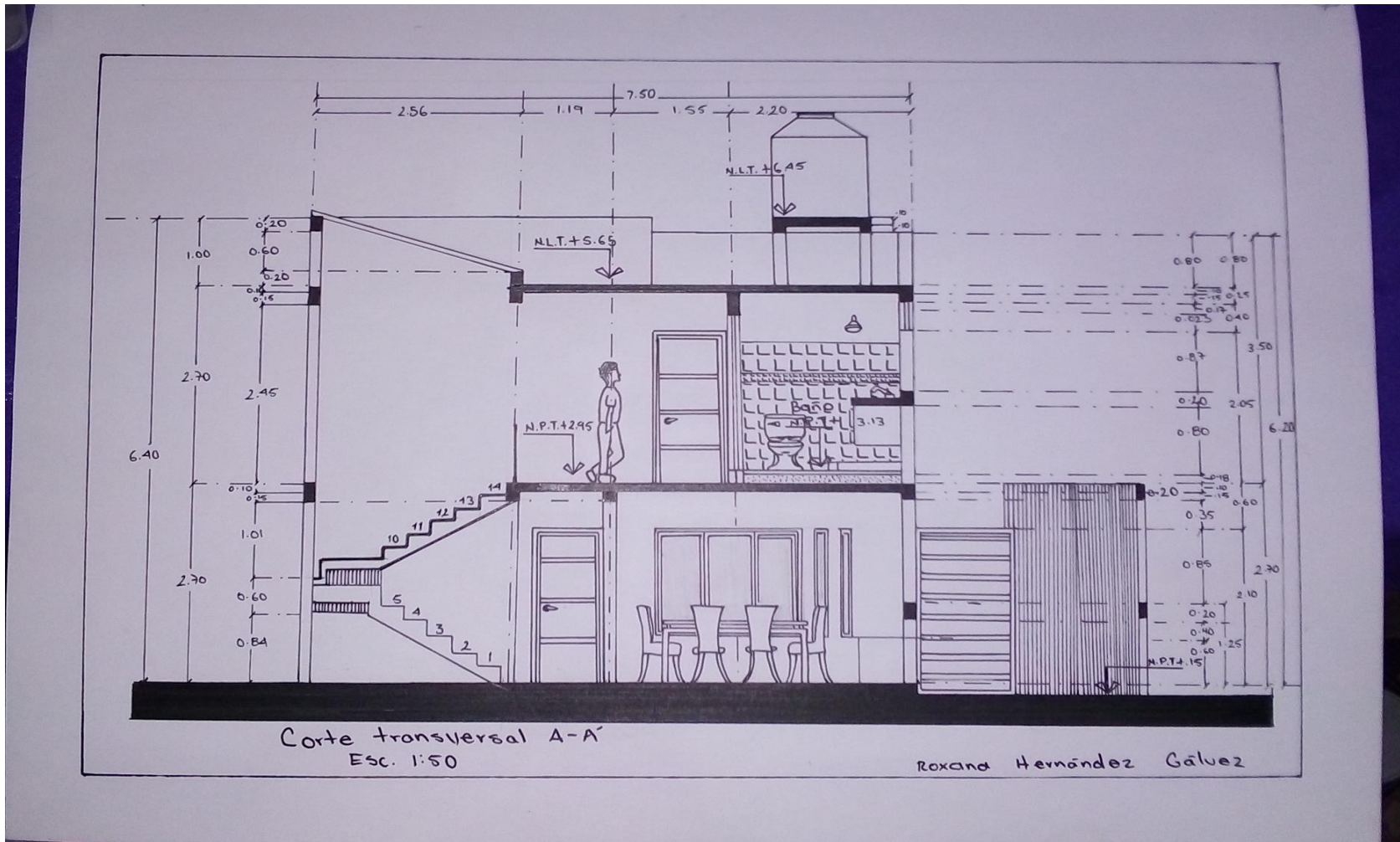


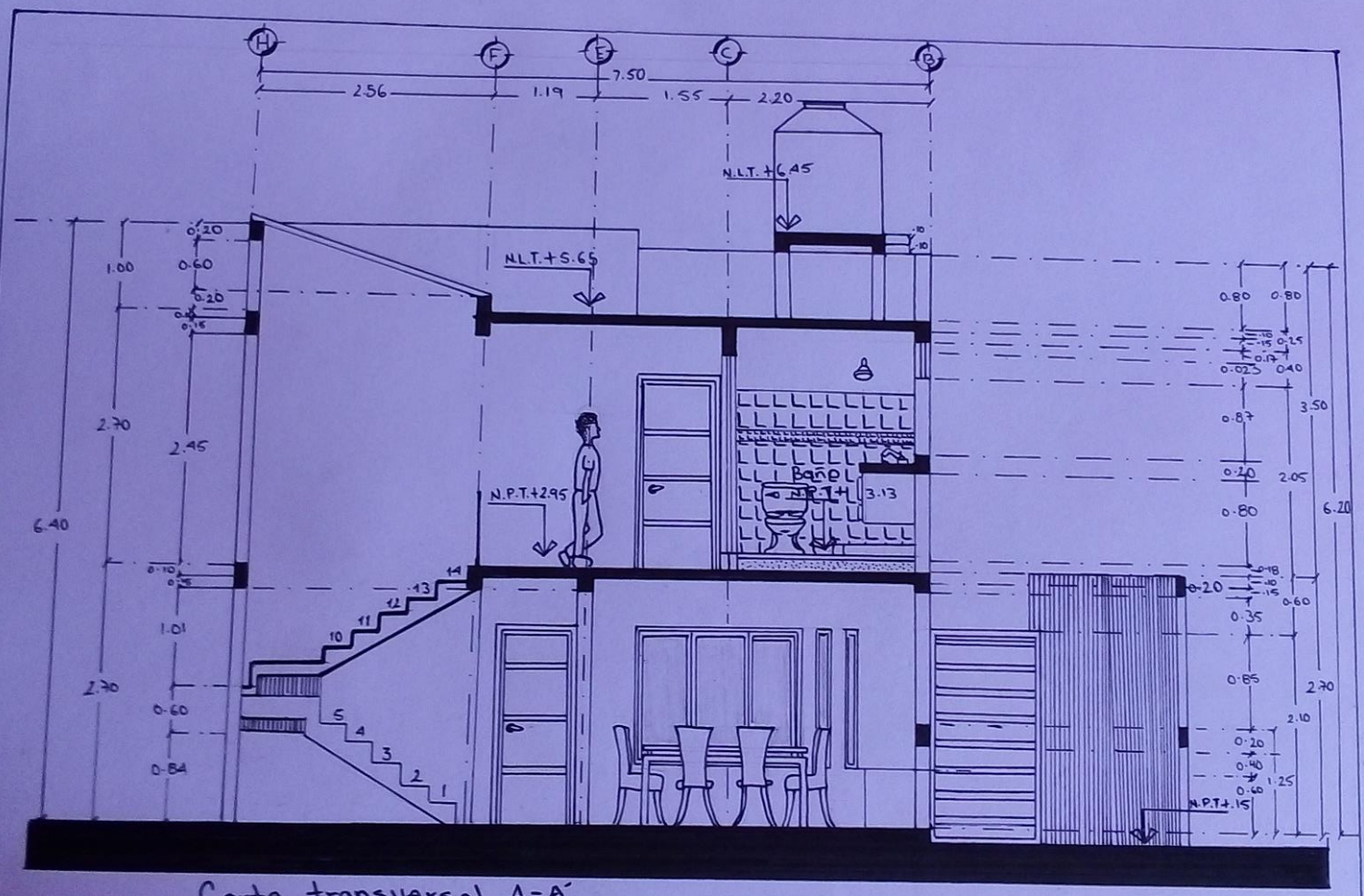
Universidad del sureste
 Arquitectura 2do. Cuatrimestre
 Geometria Descriptiva I
 Planta Alta



Universidad del su
 Arquitectura 2do. c
 Geometria Descript
 Planta Alta

CORTE TRANSVERSAL

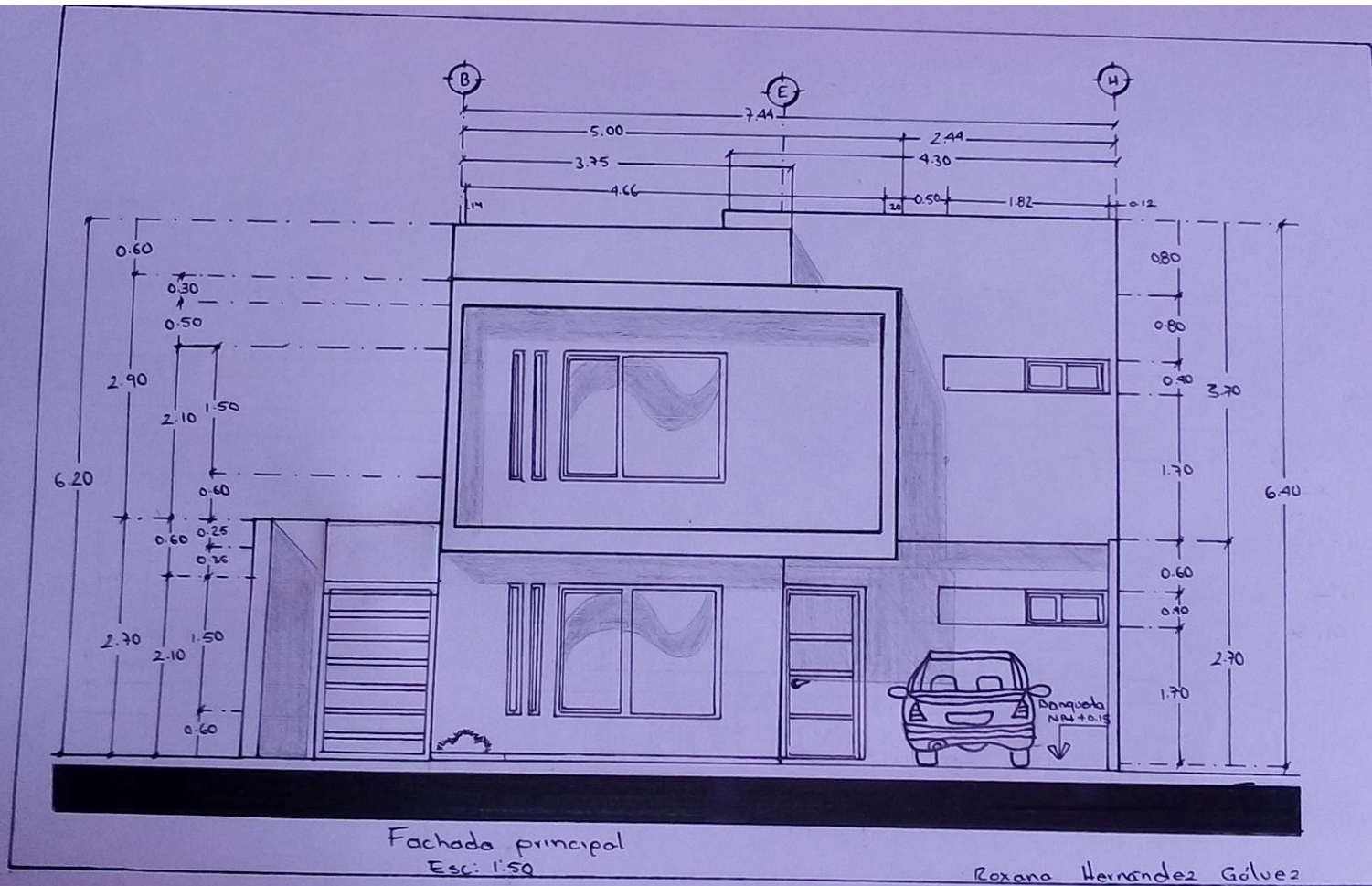


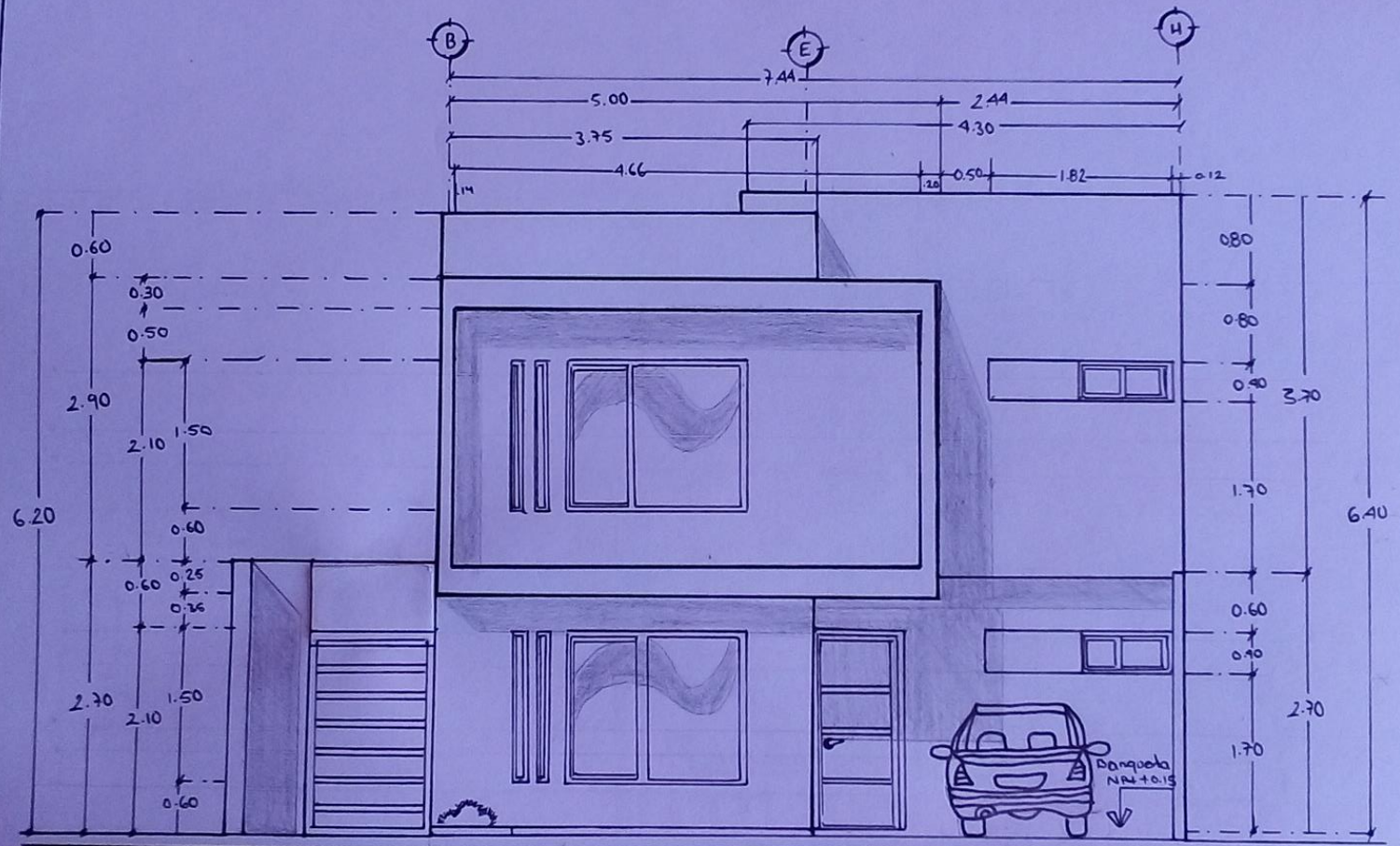


Corte transversal A-A'
Esc. 1:50

Roxana Hernández Gálvez

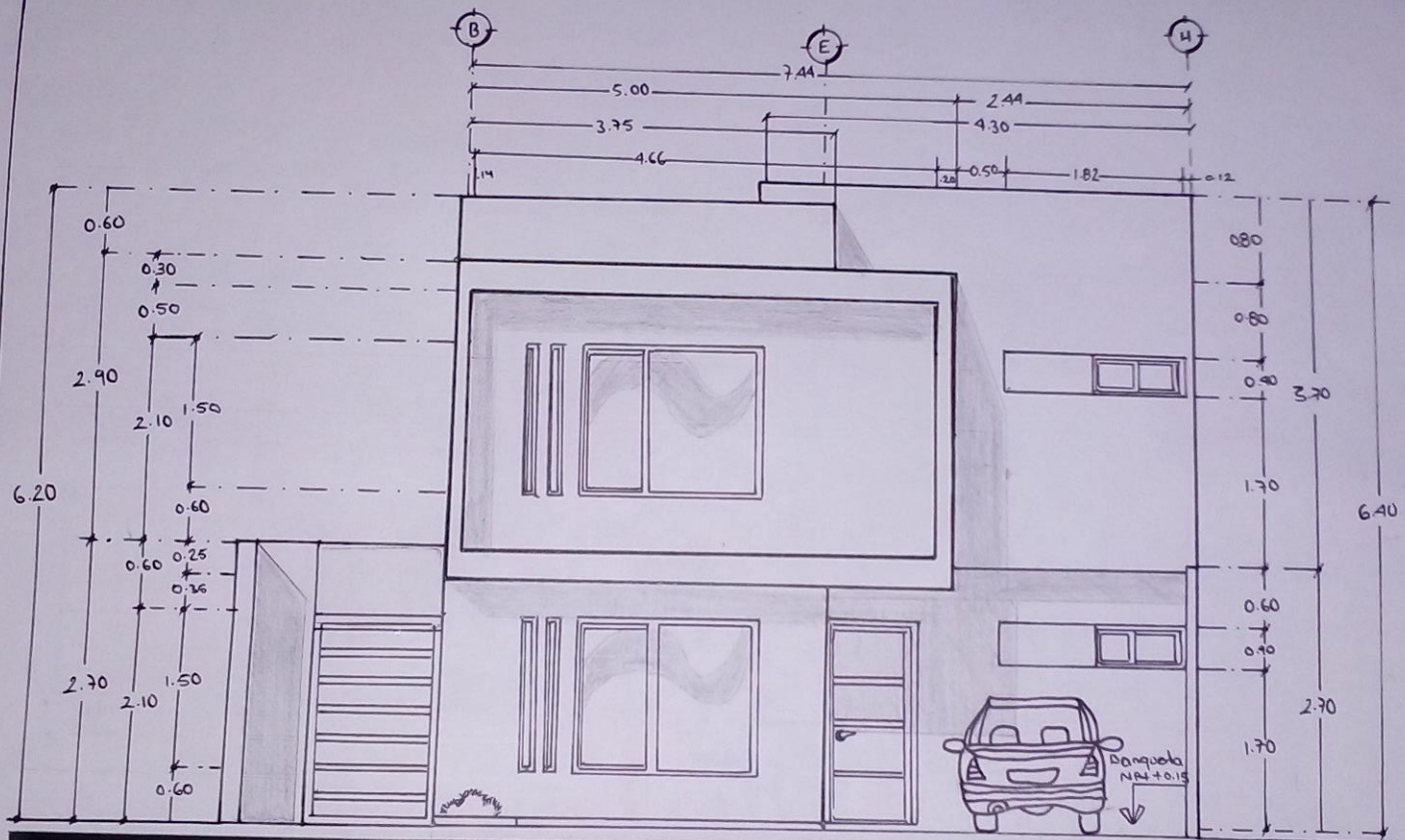
FACHADA PRINCIPAL





Fachada principal
Esc: 1:50

Roxana Hernandez Gálvez



Fachada principal
Esc: 1:50

Roxana Hernandez Gálvez