

You can't miss it?

1 WORD POWER *Places and things*

A Where can you get these things? Match the things with the places. Then listen and practice. "You can buy aspirin at a drugstore."

1. aspirin **b**.....
2. bread **h**.....
3. a dictionary **f**.....
4. gasoline **c**.....
5. a sandwich **g**.....
6. stamps **a**.....
7. a suit **d**.....
8. traveler's checks **e**.....



a. a post office



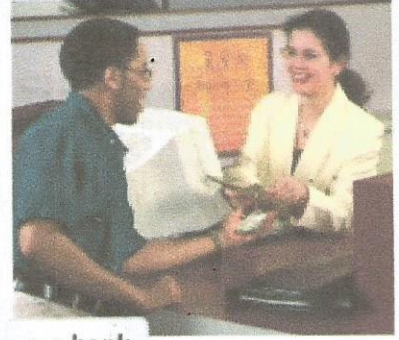
b. a drugstore



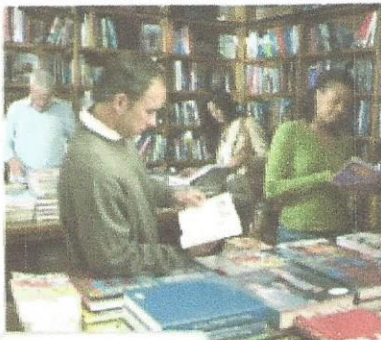
c. a gas station



d. a department store



e. a bank



f. a bookstore



g. a coffee shop



h. a supermarket

B PAIRWORK What else can you get or do in the places in part A?

A: You can get a magazine at a bookstore.

B: And you can send a package at the post office.

2 LISTENING *I need a new swimsuit.*

- A** Listen to the Anderson family's conversations. What do they need? Where are they going to get the things? Complete the chart.

	What	Where
1. Jean	a swimsuit	a department store
2. Mom	a cookies	a supermarket
3. Dad	an aspirin	a drugstore
4. Mike	a magazine	a bookstore

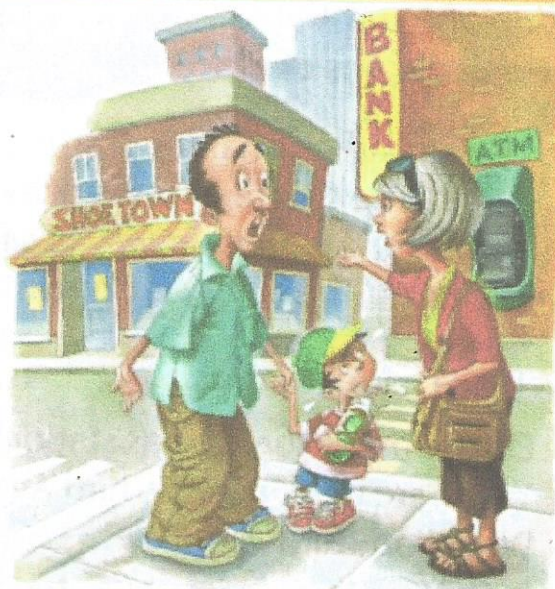
- B PAIR WORK** What do you need? Where are you going to get it? Tell your partner.

"I need a snack, so I'm going to go to a coffee shop. ..."

3 CONVERSATION *It's an emergency!*

- A** Listen and practice.

Man: Excuse me. Can you help me? Is there a public restroom around here?
 Woman: A public restroom? Hmm. I'm sorry. I don't think so.
 Man: Oh, no. My son needs a restroom – now. It's an emergency!
 Woman: Oh, dear. Well, there's a restroom in the department store on Main Street.
 Man: Where on Main Street?
 Woman: It's on the corner of Main and First Avenue.
 Man: On the corner of Main and First?
 Woman: Yes, it's across from the park. You can't miss it.
 Man: Thanks a lot.



4 PRONUNCIATION *Compound nouns*

- A** Listen and practice. Notice the stress in these compound nouns.

post office	gas station	restroom	coffee shop
drugstore	bookstore	supermarket	department store

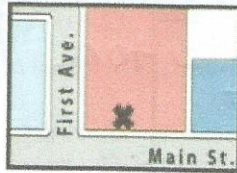
- B PAIR WORK** Practice these sentences. Pay attention to the stress in the compound nouns.

There's a restroom in the drugstore.
 There's a bookstore in the department store.

There isn't a post office in the supermarket.
 There isn't a coffee shop in the gas station.

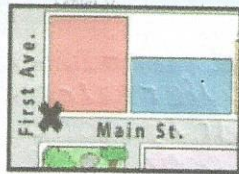
5 GRAMMAR FOCUS

Prepositions of place

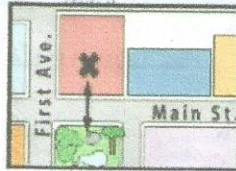


on

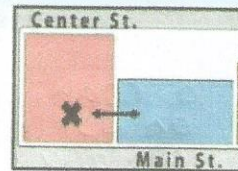
The department store is **on** Main Street.
It's **on the corner of** Main and First.
It's **across from** the park.



on the corner of

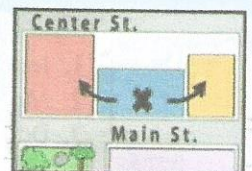


is opposite
across from
in from



next to

It's **next to** the bank.



between

The bank is **between** the department store **and** the restaurant.

on / it / at

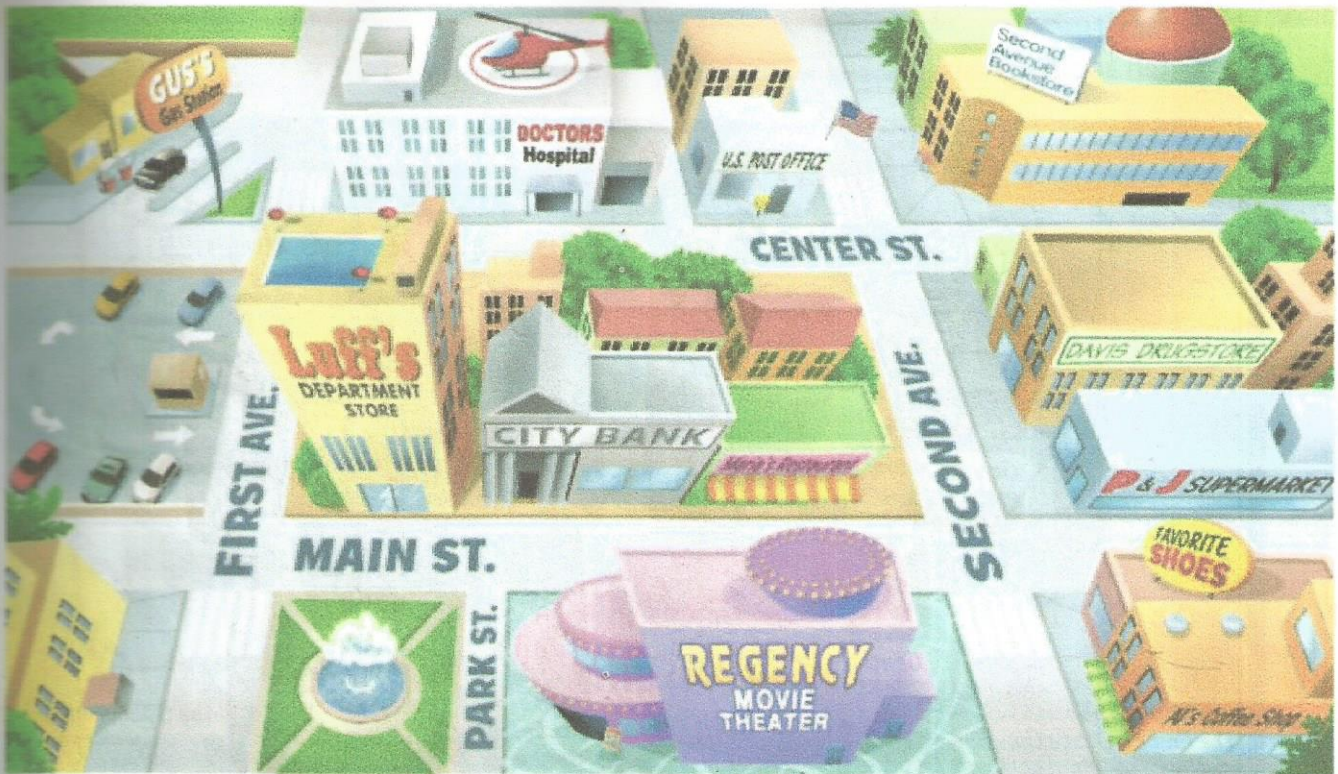
1 Prepositions of place

- ▶ Use **on** with the names of streets and avenues: The bookstore is **on** Center Street. The theater is **on** Park Avenue.
- ▶ **Across from** is another way of saying **opposite**: The library is **across from** the theater. = The library is **opposite** the theater.

Circle the correct words.

- A: Excuse me. Is there a gas station around here?
B: Yes, there is. It's **in** / **on** Third Avenue.
A: Where on Third Avenue?
B: It's **in** / **on** the corner of Center Street and Third Avenue.
A: **Across from** / **to** Stacy's Department Store?
B: Yes, that's right. It's next **to** / **from** the park.
A: Thanks. Oh, and where is the post office?
B: It's on Center Street - **between** / **next to** the hospital and the bank.
A: Great. Thanks very much.
B: You're welcome.

A Look at the map and complete the sentences. Then compare with a partner.



1. The coffee shop is on Second Avenue. It's next to the shoe store.
2. The movie theater is between Park and Main. It's across from the park. on the corner of
3. The gas station is across from the parking lot. It's on the corner of First and Center.
4. The post office is on the corner of Center and Second. It's next to the hospital.
5. The bank is between the restaurant and the department store. It's on Main Street.

B PAIR WORK Where are these places on the map? Ask and answer questions.

the park the drugstore the bookstore the hospital the shoe store

A: Where is the park?

B: It's between Park and First, across from the department store.

where is the drugstore. It's next to the supermarket. on the corner of second and main
 where is the bookstore. It's on the corner of center and second, across from the post office
 where is the hospital. It's on center street, across from Gas station.
 where is the shoe store? It's on the corner of main and second, next to the coffee shop

6 LISTENING Where is it?

Look at the map in Exercise 5. Listen to four conversations. Where are the people going?

1. City Bank
2. Drugstore
3. Mario's restaurant
4. the shoe store

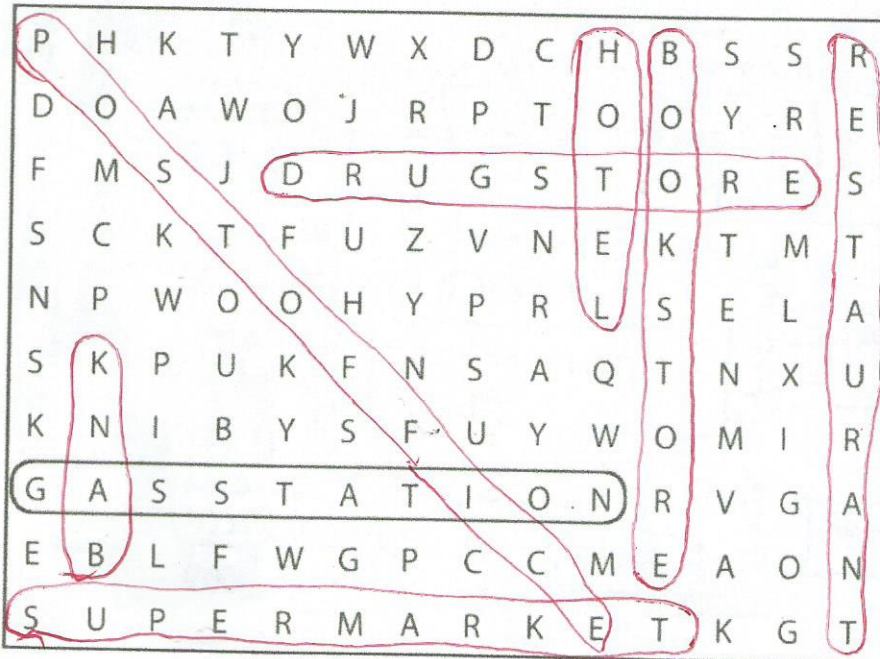
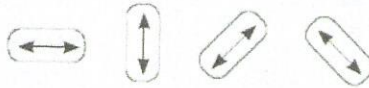
WORKBOOK

1 Places

A Complete these sentences with the correct places.
Write one letter on each line.

- We need gasoline for the car. Is there a g a s s t a t i o n near here?
- I'm going to go to the B a n k. I need some traveler's checks.
- I work at a B o o k s t o r e. I love books, so it's a great job.
- Are you going to the P o s t o f f i c e? I need some stamps.
- We don't have anything for dinner. Let's buy some food at the S u p e r m a r k e t.
- Tomorrow we're going to go to Paris for five days. We're going to stay at an expensive H o t e l.
- I have a stomachache. Can you buy some antacid at the D r u g s t o r e?
- Let's go out for lunch. There's a great Mexican R e s t a u r a n t downtown.

B Find and circle the places in part A in the puzzle.

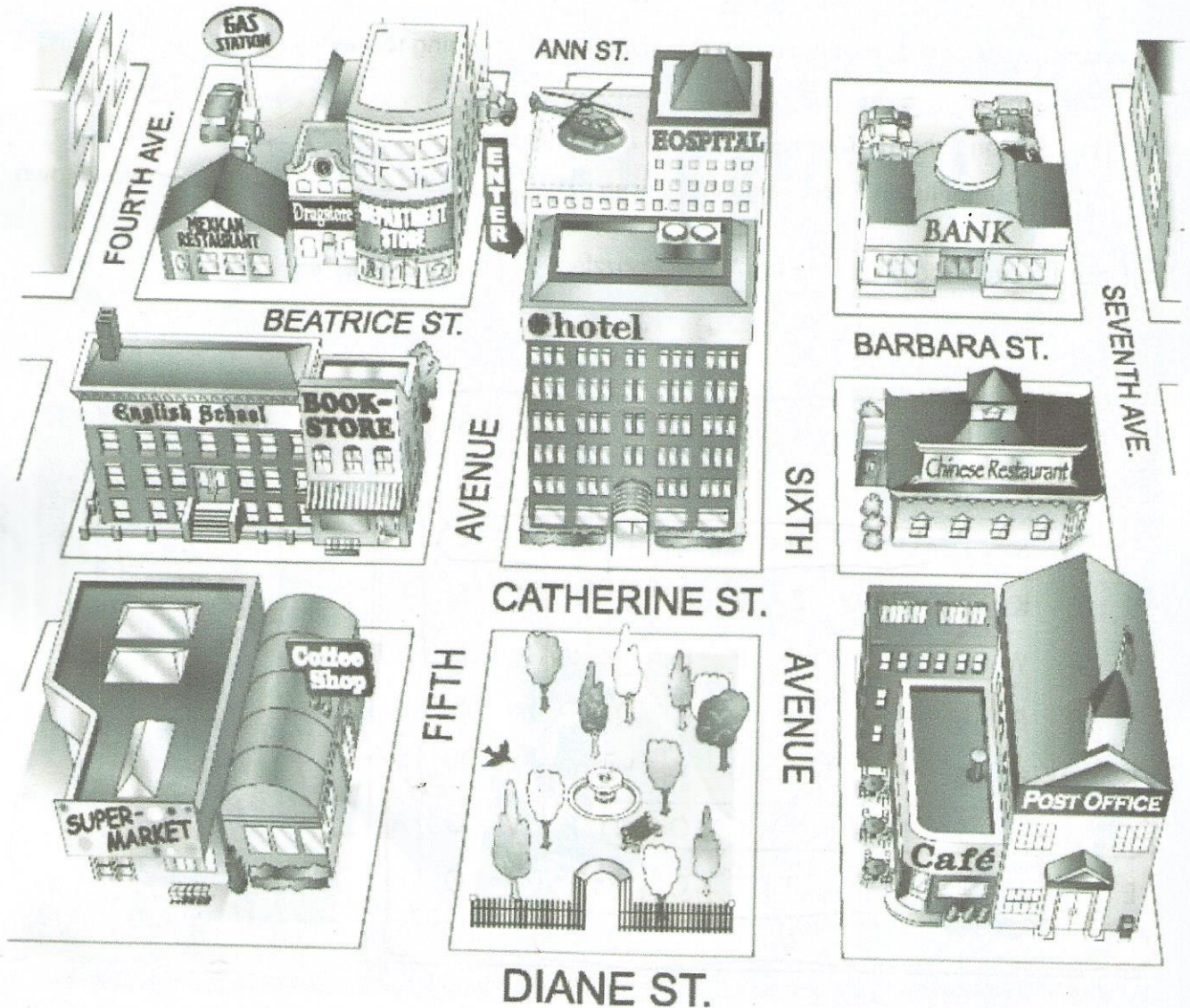


2

Look at the map. Complete the sentences with the prepositions in the box.

- | | | |
|--|---|--|
| <input type="checkbox"/> across from | <input checked="" type="checkbox"/> between | <input checked="" type="checkbox"/> on |
| <input checked="" type="checkbox"/> behind | <input type="checkbox"/> next to | <input checked="" type="checkbox"/> on the corner of |

- The English school is on Catherine Street.
- The hospital is Behind the hotel.
- The Mexican restaurant is on the corner of Beatrice Street and Fourth Avenue.
- The bank is on Barbara Street, Between Sixth and Seventh Avenues.
- The bookstore is Next to the English school.
- The coffee shop is Across from the park.



3

Where is it?

A Look at the map in Exercise 2 again. Where is each place? Write two sentences.

1. bookstore The bookstore is on the corner of Catherine Street and Fifth Avenue. It's next to the English school.
2. supermarket The supermarket is behind the coffee shop, on the Diane street.
3. department store The department store is on the corner of Beatrice street and fifth avenue. It's next to the drugstore
4. gas station The gas station is on the corner of fourth Avenue and Beatrice street. It's behind the
5. Chinese restaurant The chinese restaurant is between sixth and seventh avenues. It's behind the post office
6. hotel The hotel is on catherine street, between fifth and sixth avenues
7. post office The Post office is on the corner of Diane street and seventh avenue. It's next to the coffeeshop
8. drugstore The drugstore is on Beatrice street It's between the mexican restaurant and department store.

B Where is your school? Draw a map. Then write two sentences.



- My school is on Sofia street. It's between Daniel and Jose Avenues.
- My school is across from the supermarket.