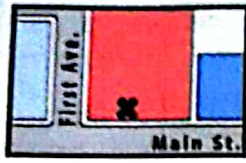


Prepositions of place

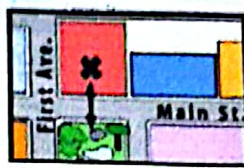


on

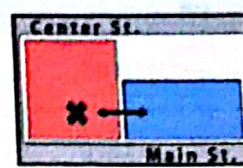
The department store is **on** Main Street.
It's **on the corner of** Main and First.
It's **across from** the park.



on the corner of



across from



next to

It's **next to** the bank.
The bank is **between** the department store **and** the restaurant.



between

1 Prepositions of place

- ▶ Use *on* with the names of streets and avenues: The bookstore is **on** Center Street. The theater is **on** Park Avenue.
- ▶ *Across from* is another way of saying *opposite*: The library is **across from** the theater. = The library is **opposite** the theater.

Circle the correct words.

A: Excuse me. Is there a gas station around here?

B: Yes, there is. It's ~~in~~ / **on** Third Avenue.

A: Where on Third Avenue?

B: It's ~~in~~ / **on** the corner of Center Street and Third Avenue.

A: ~~Across~~ **from** / **to** Stacy's Department Store?

B: Yes, that's right. It's next ~~to~~ / **from** the park.

A: Thanks. Oh, and where is the post office?

B: It's on Center Street - ~~between~~ / **next to** the hospital and the bank.

A: Great. Thanks very much.

B: You're welcome.

A Look at the map and complete the sentences. Then compare with a partner.



1. The coffee shop is on Second Avenue. It's next to the shoe store.
2. The movie theater is between Park and Main. It's across from the park.
3. The gas station is across from the parking lot. It's between First and Center.
4. The post office is on the corner of Center and Second. It's next to the hospital.
5. The bank is between the restaurant and the department store. It's on Main Street.

B PAIR WORK Where are these places on the map? Ask and answer questions.

the park the drugstore the bookstore the hospital the shoe store

A: Where is the park?

B: It's between Park and First, across from the department store.

6 LISTENING Where is it?

ON Look at the map in Exercise 5. Listen to four conversations. Where are the people going?

1. Bank
2. Drugstore
3. Shoe store
4. _____

WORKBOOK

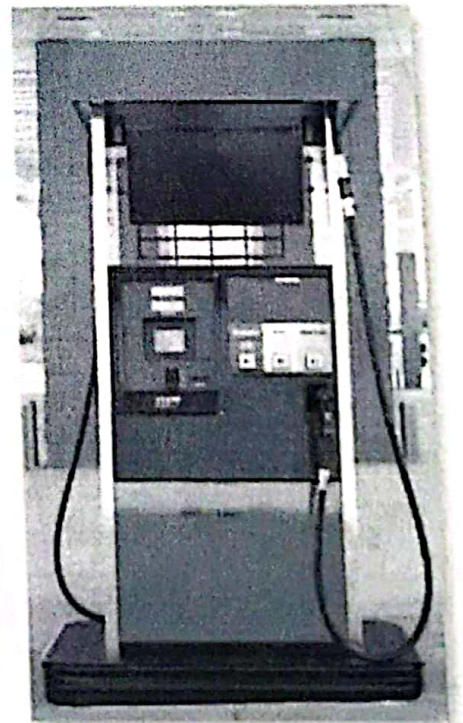
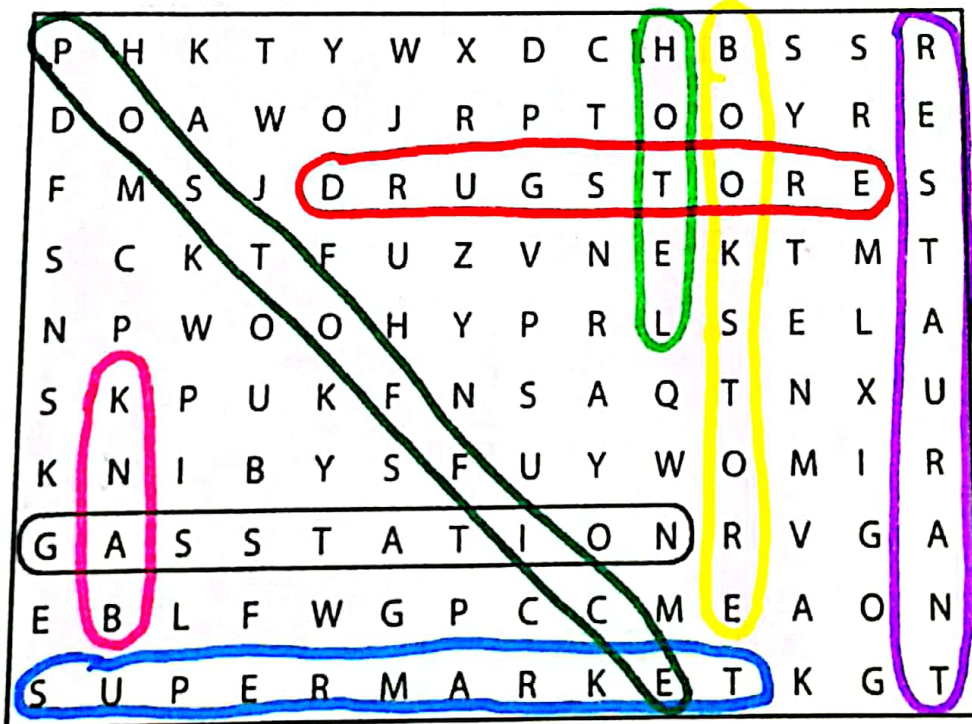
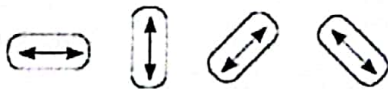
1

Places

A Complete these sentences with the correct places.
Write one letter on each line.

1. We need gasoline for the car. Is there a gas station near here?
2. I'm going to go to the Bank. I need some traveler's checks.
3. I work at a Bookstore. I love books, so it's a great job.
4. Are you going to the Post office? I need some stamps.
5. We don't have anything for dinner. Let's buy some food at the Supermarket.
6. Tomorrow we're going to go to Paris for five days. We're going to stay at an expensive Hotel.
7. I have a stomachache. Can you buy some antacid at the Drugstore?
8. Let's go out for lunch. There's a great Mexican Restaurant downtown.

B Find and circle the places in part A in the puzzle.



2

Look at the map. Complete the sentences with the prepositions in the box.

- across from
- behind
- between
- next to
- on
- on the corner of

1. The English school is on Catherine Street.
2. The hospital is Behind the hotel.
3. The Mexican restaurant is On the corner of Beatrice Street and Fourth Avenue.
4. The bank is on Barbara Street, Between Sixth and Seventh Avenues.
5. The bookstore is next to the English school.
6. The coffee shop is across from the park.

