

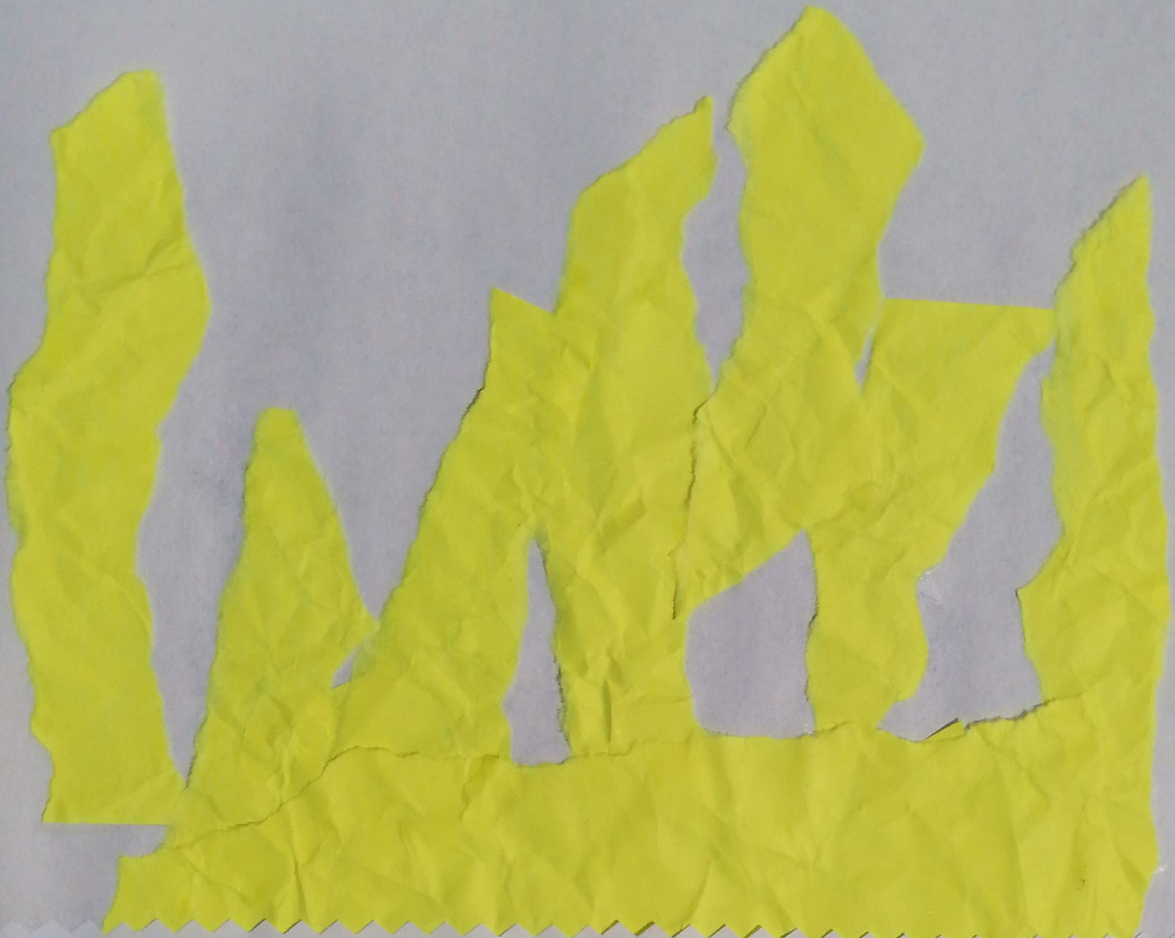


Material quirúrgico

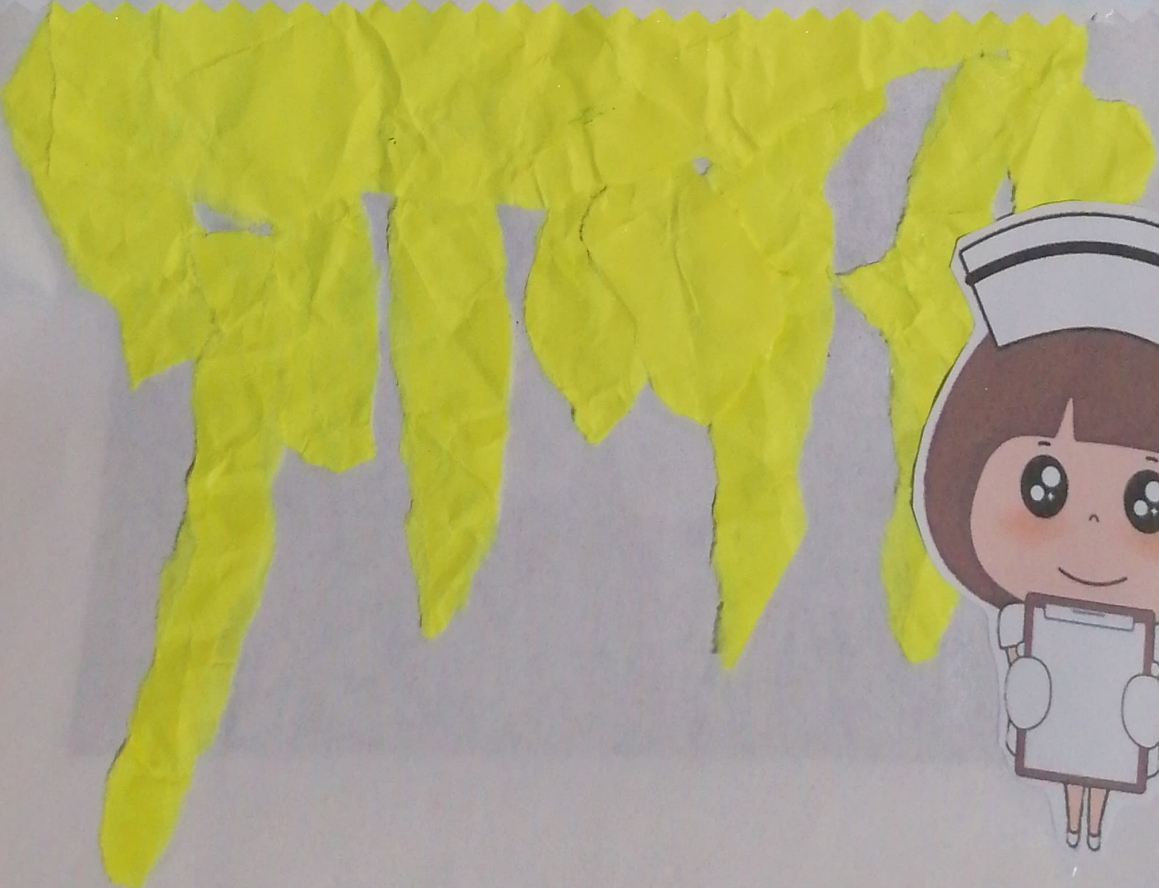
Candelaria Elizabeth
González Gómez

5° A

M.A.S.S. Cecilia Zamorano



Equipo de disección

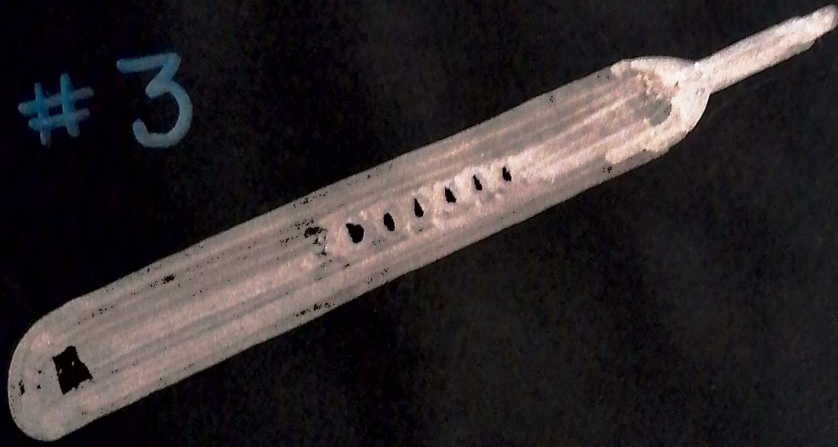


Sonda acanalada



Mango de bisturi

#3



#4



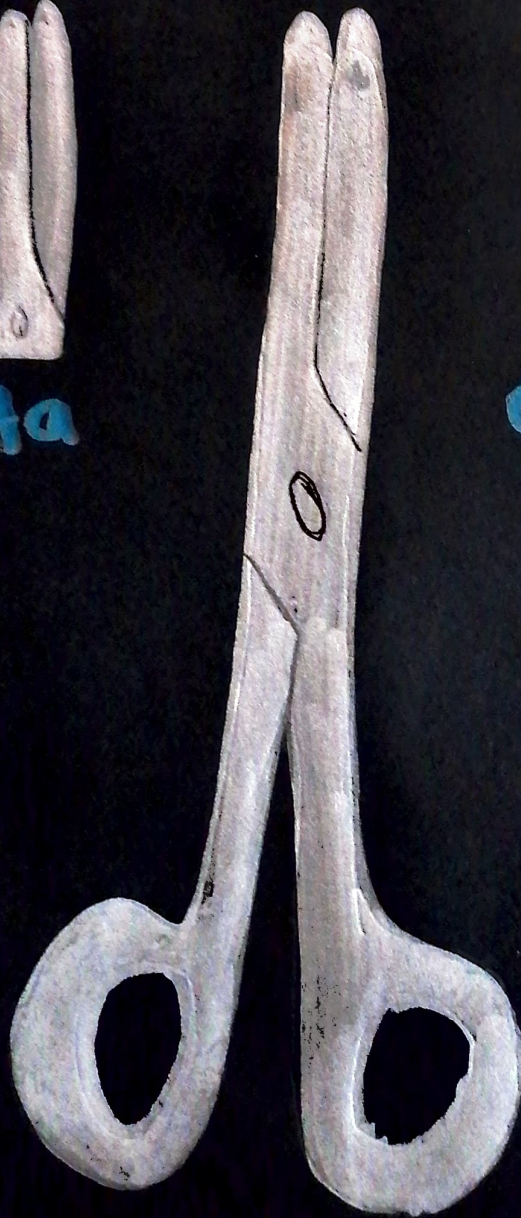
Tijera mayo recta



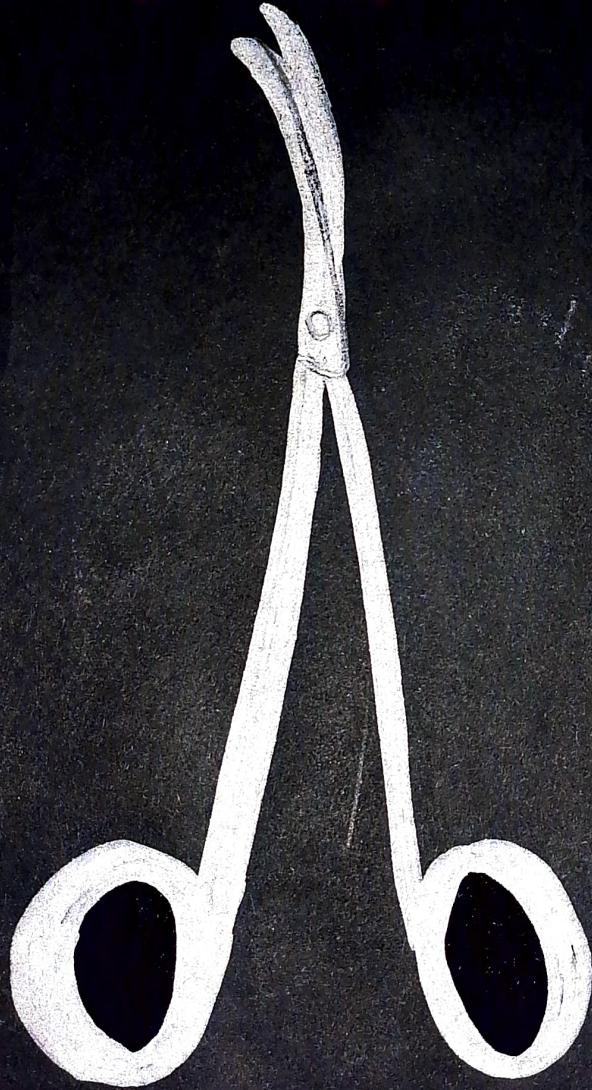
Recta



Culva



Tijera Metzenbaum
curva



Separador Farabeuf



Pinza de disección



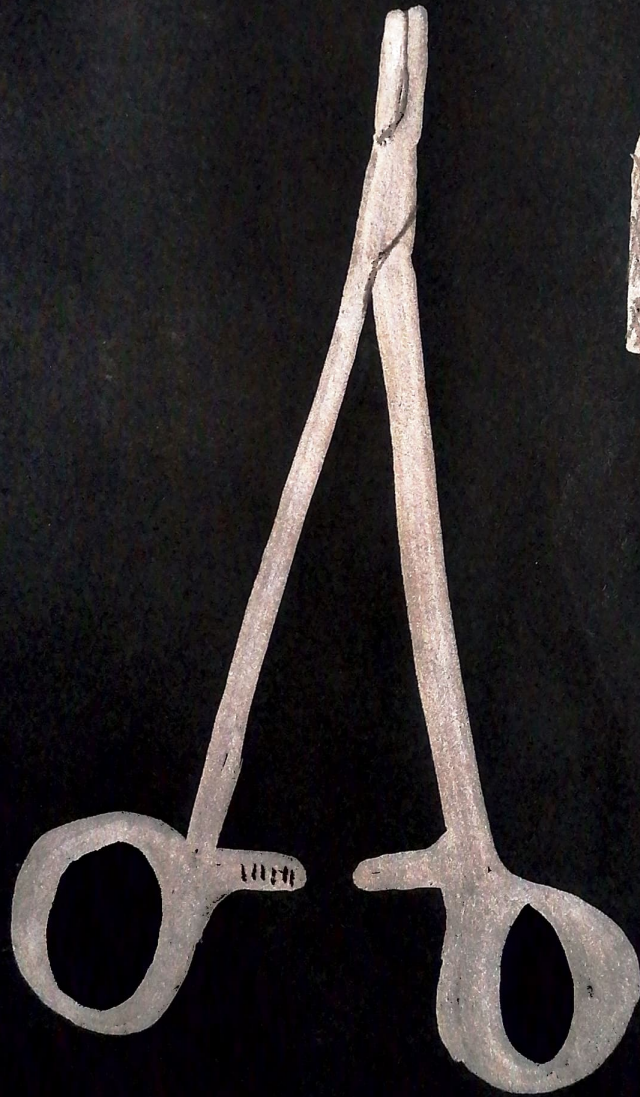
con dientes



sin dientes



Porta agujas



Pinza Kelly



recta



curva

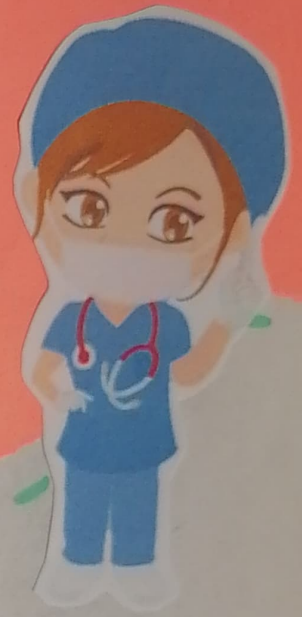
Pinza mosquito



recta



cutiva



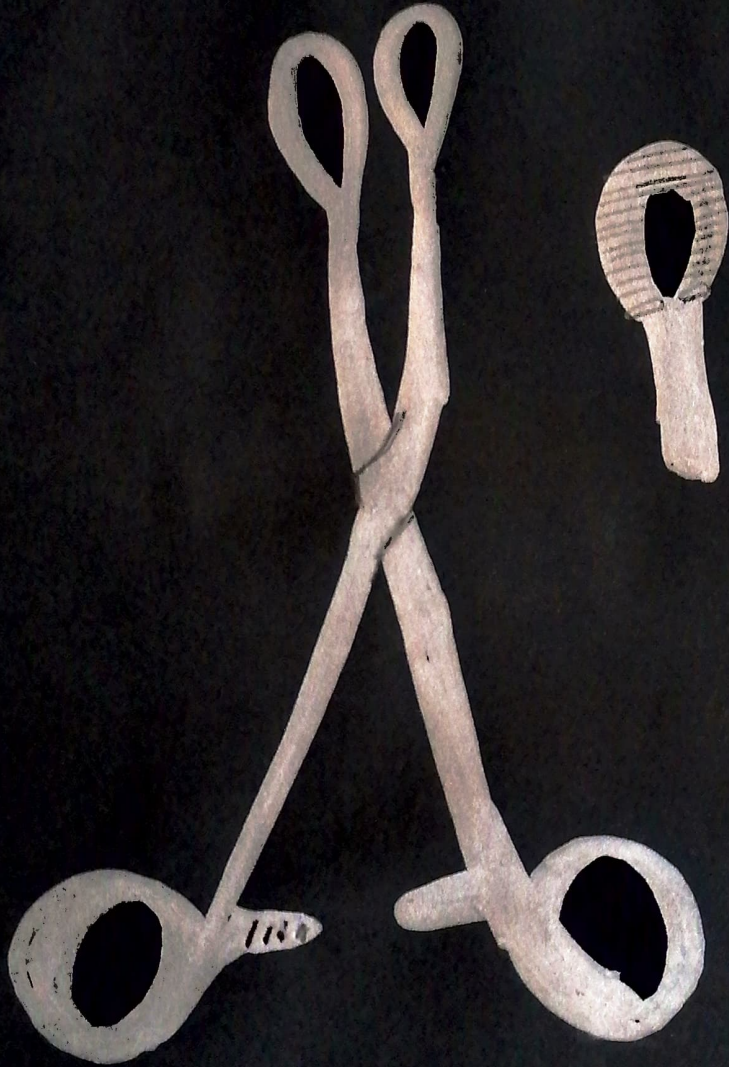
Equipo de parto



Perilla



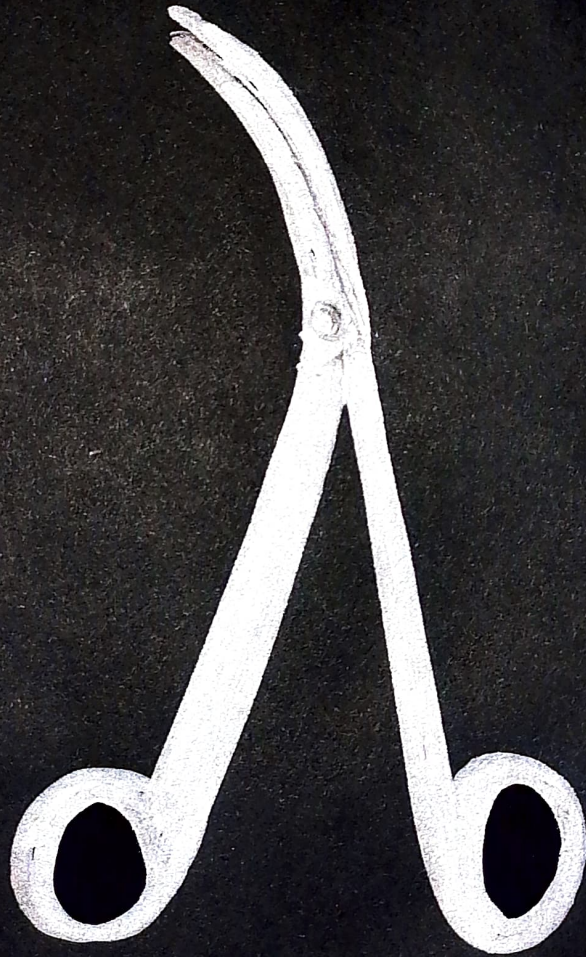
Pinza Förster



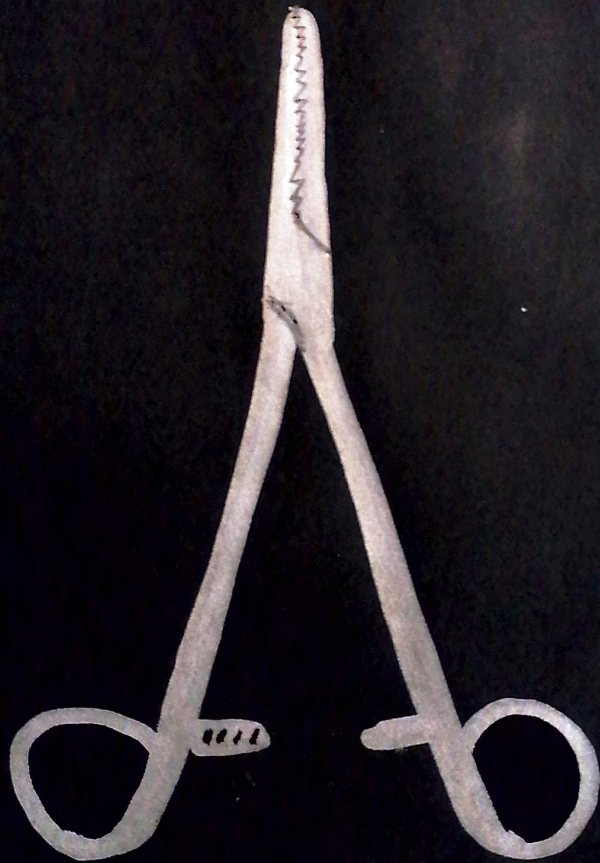
Tijera mayo



Tijera Metzenbaum



Pinza Rochester



Hemostática

Porta agujas

